



Bucharest

**WOMEN'S OLYMPIC QUALIFICATION**SUN 30 MAR 2008  
17:00**Qualification - Tournament II**Match No: 6  
Spectators: 3.000**Match Team Statistics****POL 26 - 27 ROU**  
(13 - 16) (13 - 11)

Referees: GATELIS M. (LTU) / MAZEIKA V. (LTU)

**POL - Poland**

No.	Name	Shots								Offence		Defence		Penalties			TP	
		G/S	%	6m	Wing	9m	7m	FB	BT	AS	TF	ST	BS	YC	2Min	RC		EX
2	JACEK Aleksandra	0/1	0	0/1							2		1	1				13:19
3	MALCZEWSKA Dorota	2/3	67	0/1			1/1	1/1			2	1	1					37:59
4	ZALECZNA Kaja																	
5	NIEDZWIEDZ - CECOTKA Iwona	2/3	67			1/1		1/2			3				2			34:05
7	DAMIECKA Ewa	3/8	38	2/6				1/2			1			1				38:32
9	MAJEREK Malgorzata	3/4	75			0/1		3/3										54:25
11	POLENZ Kinga	3/5	60	1/1	1/2	0/1			1/1		2							60:00
14	KUDLACZ Karolina	7/13	54	2/3	1/1	1/4	0/2	2/2	1/1	3	5	1						60:00
15	DUDA Izabela	5/14	36	2/3		3/11							2	1				47:48
16	CHEMICZ Magdalena																	
18	DURAN Katarzyna	0/2	0			0/1		0/1			1							8:41
22	SADOWSKA Malgorzata	1/1	100					1/1										60:00
26	ROGUCKA Emilia																	5:11
88	PIELESZ Klaudia																	
	Bench/Team																	
Totals		26/54	48	7/15	2/3	5/19	1/3	9/12	2/2	3	16	2	4	2	3			

No.	Name	Total Shots		6m Shots		Wing Shots		9m Shots		7m Shots		Fast Breaks		Breakthroughs	
		S/S	%	S/S	%	S/S	%	S/S	%	S/S	%	S/S	%	S/S	%
16	CHEMICZ Magdalena														
22	SADOWSKA Malgorzata	20/47	43	2/10	20	2/3	67	9/17	53	4/7	57	2/5	40	1/5	20
Totals		20/47	43	2/10	20	2/3	67	9/17	53	4/7	57	2/5	40	1/5	20

Team Shots	Goals	Saves	Missed	Post	Blocked	Total	%
6m Shots	7	5	1	1	1	15	47
Wing Shots	2	1				3	67
9m Shots	5	5	2	2	5	19	26
7m Shots	1	2			n/a	3	33
Fast Breaks	9	3				12	75
Breakthroughs	2					2	100
Totals	26	16	3	3	6	54	48

Number of Attacks: 62, Scoring Efficiency: 42%





Bucharest

**WOMEN'S OLYMPIC QUALIFICATION**SUN 30 MAR 2008  
17:00

Qualification - Tournament II

Match No: 6  
Spectators: 3.000**Match Team Statistics****POL 26 - 27 ROU**  
(13 - 16) (13 - 11)

Referees: GATELIS M. (LTU) / MAZEIKA V. (LTU)

**ROU - Romania**

No.	Name	Players		Shots						Offence		Defence		Penalties			TP			
		G/S	%	6m	Wing	9m	7m	FB	BT	AS	TF	ST	BS	YC	2Min	RC		EX		
2	MAIER Ramona Petruta	2/6	33		0/1		1/2	1/3					3	1			1			60:00
4	BARSAN Florina																			
5	LUNGU Carmen Andreea	5/7	71			2/3	2/3		1/1	1	1	1	1	1						41:21
6	BALINT Camelia	2/5	40	1/1	0/2	0/1		1/1												22:37
7	OLTEANU NECHITA Adriana Nicoleta	1/3	33	0/1	1/1	0/1					1	1								37:23
8	NEAGU Cristina	2/3	67			1/2			1/1		1		1	1						21:03
9	BRADEANU Aurelia	4/10	40	0/1		3/6	0/1		1/2	1	1	1	1		1					38:52
10	STANCA Ionela	7/9	78	6/8				1/1		2	1		1							42:38
12	TOLNAI Talida																			10:18
14	LUCA Steluta	1/3	33			1/3						1	1							18:07
16	DINU Luminita									2	1									49:42
18	MEIROSU Adina Laura	2/5	40			1/4			1/1	1	2	1								42:18
19	BESE Aurica Valeria	1/2	50	1/1		0/1				1										25:17
99	LECUSANU Georgeta Narcisa	0/3	0			0/2	0/1													10:24
	Bench/Team													1						
Totals		27/56	48	8/12	1/4	8/23	3/7	3/5	4/5	8	11	6	5	4	1					

No.	Name	Total Shots		6m Shots		Wing Shots		9m Shots		7m Shots		Fast Breaks		Breakthroughs	
		S/S	%	S/S	%	S/S	%	S/S	%	S/S	%	S/S	%	S/S	%
12	TOLNAI Talida	5/15	33	3/5	60			0/4	0	2/3	67	0/3	0		
16	DINU Luminita	11/27	41	2/7	29	1/3	33	5/6	83			3/9	33	0/2	0
Totals		16/42	38	5/12	42	1/3	33	5/10	50	2/3	67	3/12	25	0/2	0

Team Shots	Goals	Saves	Missed	Post	Blocked	Total	%
6m Shots	8	2		2		12	67
Wing Shots	1	2		1		4	25
9m Shots	8	9	1	2	3	23	35
7m Shots	3	4			n/a	7	43
Fast Breaks	3	2				5	60
Breakthroughs	4	1				5	80
Totals	27	20	1	5	3	56	48

Number of Attacks: 61, Scoring Efficiency: 44%



Bucharest

# WOMEN'S OLYMPIC QUALIFICATION



SUN 30 MAR 2008  
17:00

Qualification - Tournament II

Match No: 6  
Spectators: 3.000

## Match Team Statistics

### POL 26 - 27 ROU (13 - 16) (13 - 11)

Referees: GATELIS M. (LTU) / MAZEIKA V. (LTU)

## ROU - Romania

### Shots Distribution

#### Players

Goals / Shots

2 MAIER R.			4 BARSAN F.			5 LUNGU C.			6 BALINT C.			7 OLTEANU NECHITA A.			8 NEAGU C.			9 BRADEANU A.		
						0/1				0/1	1/1		0/1					1/1	1/1	
		0/1				0/1		2/2			1/1	1/1		0/1					0/1	
1/1	0/2	1/1						3/3		0/1					1/1		1/1	1/1	1/2	0/1
1-Post									1-Blocked			1-Post			2-Post 1-Blocked					
10 STANCA I.			14 LUCA S.			18 MEIROSU A.			19 BESE A.			99 LECUSANU G.								
	1/2	1/1			0/1			1/2			1/1									
1/1		1/1		0/1								0/2								
1/1		2/2	1/1					1/2			0/1									
1-Post						1-Blocked						1-Missed								

#### Team

#### Offence

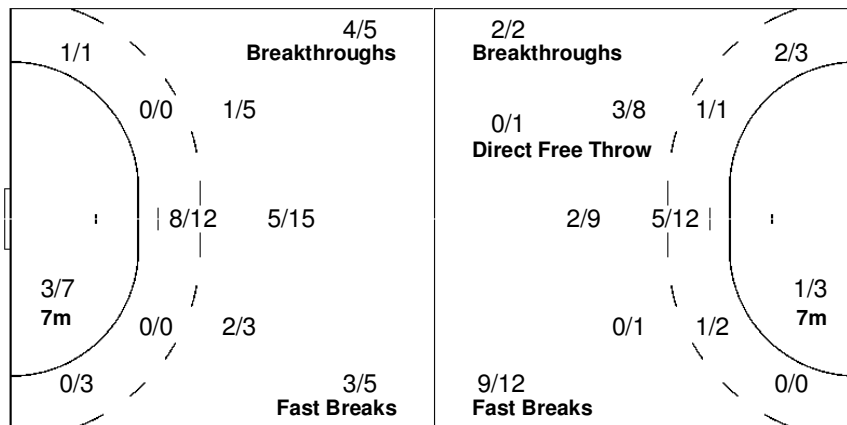
#### Defence

#### Goalkeepers

Goals / Shots

1/2	2/5	4/6
2/5	0/2	4/6
5/5	1/5	8/11

1-Missed 5-Post 3-Blocked



Saves / Shots

1/1	1/4	0/3
3/7	5/5	0/3
2/10	2/4	2/5

#### 12 TOLNAI T.

	0/2	0/1
1/3		0/2
2/4	1/2	1/1

#### 16 DINU L.

1/1	1/2	0/2
2/4	5/5	0/1
0/6	1/2	1/4

#### Legend:

<b>G/S</b> Goals / Shots	% Efficiency	<b>6m</b> 6-metre Shots	<b>7m</b> 7-metre Shots	<b>9m</b> 9-metre Shots
<b>S/S</b> Saves / Shots	<b>Wing</b> Wing Shots	<b>FB</b> Fast Breaks	<b>BT</b> Breakthroughs	<b>EX</b> Exclusions
<b>AS</b> Assists	<b>TF</b> Technical Faults	<b>ST</b> Steals	<b>BS</b> Blocked Shots	<b>TP</b> Time Played
<b>YC</b> Yellow Cards	<b>RC</b> Red Cards	<b>n/a</b> not applicable	<b>2Min</b> 2 Minute Suspensions	
+ 2 Minute + 2 Minute Suspensions				