



# XIX Women's World Championship 2009

## China



### Cumulative Statistics

### ANG - Angola After 9 Matches

Players		MP	Shots								Offence		Defence			Penalties			TP
No.	Name		G / S	%	6m	Wing	9m	7m	FB	BT	AS	TF	ST	BS	YC	2Min	RC	EX	
1	TAVARES Maria Odeth	5	1/1	100					1/1			2	3					2:06:38	
2	VIEGAS Joelma Patricia	9	18/26	69	2/3	7/11	1/2		8/10				7			2		4:12:24	
3	SIBO Anastasia	9	17/17	100	16/16				1/1		4	9	1	6	5	3	1	5:10:11	
4	TAVARES Elzira	9	52/82	63	3/7	0/3	18/34	22/27	3/5	6/6	19	29	6	1	2	3	1	5:38:55	
5	ANDRE Matilde	2	2/3	67		0/1	1/1		1/1									1:15:45	
7	MORAIS Carolina Martene	7	11/23	48	1/1	7/17	0/1	1/1	2/3			5	4					4:42:05	
8	PAULO Constantina	9	7/12	58	6/9	0/1	0/1		1/1		3	6	3	5	2	8		3:23:56	
9	DOMBAXE Wuta Waco Bige	9	21/29	72	4/4		7/15		5/5	5/5	5	19	5	1	3	2		2:36:59	
11	KIALA Luisa	9	19/46	41	5/12	1/2	3/18		6/8	4/6	25	29	11		3			5:58:50	
12	MONTEIRO Lurdes Marcelina	9	16/30	53	8/10		2/10		2/4	4/6	18	27	8	1	1	3		4:22:33	
13	PEDRO Nelma Isabel	9	1/1	100					1/1		2	2	4	10	5	2		2:54:04	
14	BERNARDO Natalia Maria	9	20/31	65		10/19	0/2		8/8	2/2	4	9	15	1	1	1		5:33:27	
15	CARLOS Azenaide Danila	9	40/76	53	7/16	8/16	11/26	9/10	3/5	2/3	4	12	1			3		4:22:34	
16	PEDRO Maria Rosa	5	2/3	67					2/3									1:29:20	
17	SEBATIO Acilene	9	17/34	50	7/13	1/1	3/11		2/3	4/6	6	23	5			1		3:48:00	
24	BRANCO Cristina	8											2					5:24:19	
	Bench/Team										1			7	2				
<b>Totals</b>			244/414	59	59/91	34/71	46/121	32/38	46/59	27/34	90	173	75	25	33	33	2	0	

Goalkeepers		Total Shots		6m Shots		Wing Shots		9m Shots		7m Shots		Fast Breaks		Breakthroughs	
No.	Name	FB	%	FB	%	FB	%	FB	%	FB	%	FB	%	FB	%
1	TAVARES Maria Odeth	31/69	45	8/13	62	6/17	35	13/22	59	2/9	22	1/5	20	1/3	33
16	PEDRO Maria Rosa	15/57	26	2/11	18	2/7	29	7/18	39	1/8	13	1/7	14	2/6	33
24	BRANCO Cristina	53/175	30	9/34	26	12/27	44	19/46	41	3/16	19	9/41	22	1/11	9
<b>Totals</b>		99/301	33	19/58	33	20/51	39	39/86	45	6/33	18	11/53	21	4/20	20

Team Shots	Goals	Saves	Missed	Post	Blocked	Total	%
6m Shots	59	19	9	1	3	91	65
Wing Shots	34	29	4	4	0	71	48
9m Shots	46	30	18	12	15	121	38
7m Shots	32	2	1	3	n/a	38	84
Fast Breaks	46	10	0	2	1	59	78
Breakthroughs	27	4	1	2	0	34	79
<b>Totals</b>	244	94	33	24	19	414	59

Played		
PR	AUS	39 - 9
PR	UKR	28 - 20
PR	AUT	21 - 28
PR	THA	36 - 16
PR	RUS	21 - 23
MR	FRA	24 - 33
MR	DEN	28 - 23
MR	GER	21 - 25
PL	CHN	26 - 25

Number of Attacks: 545, Scoring Efficiency: 45%



# XIX Women's World Championship 2009

## China



### Cumulative Statistics

## ANG - Angola

### After 9 Matches

### Shots Distribution

#### Players

Goals / Shots

2 VIEGAS J			3 SIBO A			4 TAVARES E			5 ANDRE M			7 MORAIS C			8 PAULO C			9 DOMBAXE W		
5/6	3/4	1/1	3/3		1/1	3/4		4/5		1/1		0/1				0/1	1/1		2/3	2/2
2/3	0/1	5/7	1/1		1/1	5/6	0/2	6/10				0/1		2/2			1/2	4/4	1/1	6/6
2/3			5/5	2/2	4/4	9/10	4/4	21/24		1/2		1/2	3/4	5/7	3/4	2/3		2/3		4/4
1-Missed						5-Missed 8-Post 4-Blocked						2-Missed 4-Post			1-Missed			2-Missed 2-Post 2-Blocked		

11 KIALA L			12 MONTEIRO L			13 PEDRO N			14 BERNARDO N			15 CARLOS A			17 SEBATIO A		
1/1		0/1	3/3	2/2						1/2	3/3	1/3	1/2		0/2		1/1
2/4	0/1	5/6	2/3		1/1				1/3		2/4	5/8	0/4	5/7	5/6	0/1	4/6
2/2	1/1	8/13	3/6	3/3	2/3			1/1	2/3	4/6	7/7	15/17	2/8	11/17	6/9		1/2
8-Missed 5-Post 4-Blocked			5-Missed 2-Post 2-Blocked						1-Missed			2-Blocked 2-Missed 2-Post			5-Blocked 6-Missed 1-Post		

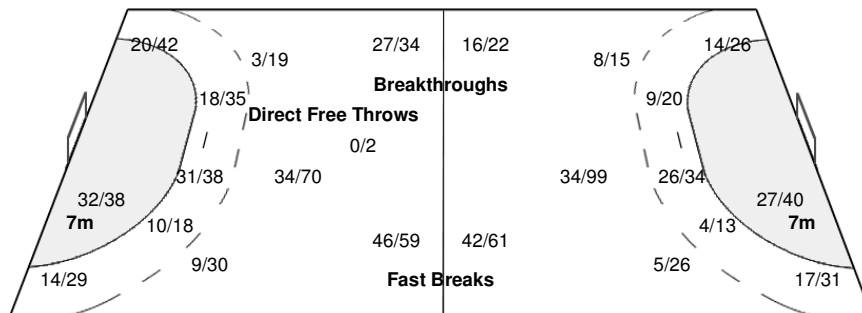
#### Team

Goals / Shots

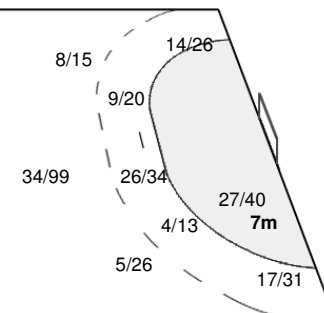
16/23	11/16	13/15
27/39	1/11	38/52
50/64	23/33	65/84

33-Missed 24-Post 19-Blocked

#### Offence



#### Defence



#### Goalkeepers

Saves / Shots

5/29	4/15	9/33
9/37	11/15	20/38
7/43	19/38	13/51

#### 1 TAVARES M

1/3	1/2	0/6
3/5	4/6	5/8
4/11	7/14	6/14

#### 16 PEDRO M

1/7	0/3	3/6
0/4	2/3	3/7
1/15	3/5	2/7

#### 24 BRANCO C

3/19	3/10	6/21
6/28	5/6	12/23
2/17	9/19	5/30

#### Legend:

<b>G/S</b> Goals/Shots	<b>%</b> Efficiency	<b>6m</b> 6-metre Shots	<b>7m</b> 7-metre Shots	<b>9m</b> 9-metre Shots
<b>S/S</b> Saves/Shots	<b>Wing</b> Wing Shots	<b>FB</b> Fast Breaks	<b>BT</b> Breakthroughs	<b>EX</b> Exclusions
<b>AS</b> Assists	<b>TF</b> Technical Faults	<b>ST</b> Steals	<b>BS</b> Blocked Shots	<b>TP</b> Time Played
<b>YC</b> Yellow Cards	<b>RC</b> Red Cards	<b>n/a</b> not applicable	<b>PL</b> Placement	<b>MP</b> Matches Played
<b>PR</b> Preliminary Round	<b>QF</b> Quarterfinal	<b>SF</b> Semifinal	<b>GM</b> Gold Medal Match	<b>BM</b> Bronze Medal Match
<b>2Min</b> 2 Minute Suspensions	<b>DSQ</b> Disqualified	<b>PC</b> Presidents Cup		