



# Women's Olympic Qualification Tournaments

## Russia

### Tournament III



## Match Team Statistics

SUN 20 MAR 2016  
18:00  
Astrakhan

Match No: 6

**RUS 37 - 29 SWE**  
(15 - 10) (22 - 19)

Referees: LAH Bojan / SOK David (SLO)

## RUS - Russia

Players		Shots								Offence		Defence		Penalties			TP	
No.	Name	G/S	%	6m	Wing	9m	7m	FB	BT	AS	TF	ST	BS	YC	2Min	RC		DR
1	SEDOYKINA Anna																	29:49
3	GORSHKOVA Polina	4/5	80	0/1	2/2	1/1		1/1		1								46:45
5	POSTNOVA Liudmila	4/4	100			4/4				1	2							18:42
7	DMITRIEVA Daria	7/9	78	2/3		4/5		1/1		3	1	2						45:47
8	SEN Anna	2/3	67	1/2				1/1			1					1		27:57
10	AKOPIAN Olga	2/4	50			1/3		1/1			1			1				23:00
13	VYAKHIREVA Anna	7/8	88	4/4	1/2		1/1	1/1		5	2			1				44:36
17	BOBROVNIKOVA Vladlena	0/2	0			0/2				3	1							22:15
22	MARENNIKOVA Ekaterina	3/3	100	1/1				2/2										17:14
24	BLIZNOVA Irina	5/6	83	2/2		1/2	2/2					1				1		40:30
33	ILINA Ekaterina	1/4	25			0/3	1/1			1								12:39
40	SLIVINSKAYA Elena	1/1	100	1/1							1							7:45
77	PETROVA Mayya	1/1	100	1/1							1		2					31:13
81	ATKOVA Ekaterina	0/1	0		0/1											1		21:37
84	EROKHINA Tatiana																	5:38
88	KALININA Victoriia										1							24:33
	Bench/Team																	
<b>Totals</b>		37/51	73	12/15	3/5	11/20	4/4	7/7		14	11	3	2	3	2			

Goalkeepers		Total Shots		6m Shots		Wing Shots		9m Shots		7m Shots		Fast Breaks		Breakthroughs	
No.	Name	S/S	%	S/S	%	S/S	%	S/S	%	S/S	%	S/S	%	S/S	%
1	SEDOYKINA Anna	10/19	53	2/7	29	3/4	75	3/4	75	0/1	0	2/3	67		
84	EROKHINA Tatiana	0/6	0	0/1	0	0/2	0	0/1	0	0/2	0				
88	KALININA Victoriia	3/17	18	0/5	0	1/2	50	2/7	29	0/3	0				
<b>Totals</b>		13/42	31	2/13	15	4/8	50	5/12	42	0/6	0	2/3	67		

Team Shots	Goals	Saves	Missed	Post	Blocked	Total	%
6m Shots	12	3				15	80
Wing Shots	3	1		1		5	60
9m Shots	11	4	1	2		20	55
7m Shots	4				N/A	4	100
Fast Breaks	7					7	100
Breakthroughs							
<b>Totals</b>	37	8	1	3	2	51	73

Number of Attacks: 58, Scoring Efficiency: 64%



# Women's Olympic Qualification Tournaments

## Russia

### Tournament III



## Match Team Statistics

SUN 20 MAR 2016  
18:00  
Astrakhan

Match No: 6

**RUS 37 - 29 SWE**  
(15 - 10) (22 - 19)

Referees: LAH Bojan / SOK David (SLO)

## RUS - Russia

### Shots Distribution

#### Players

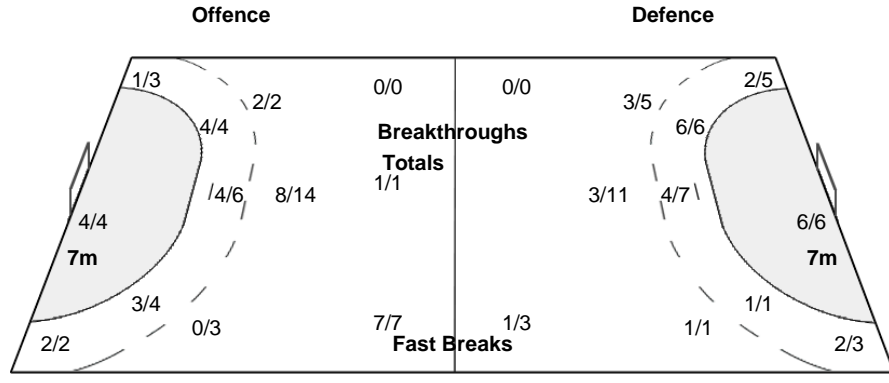
Goals / Shots

1 SEDOYKINA A	3 GORSHKOVA P	5 POSTNOVA L	7 DMITRIEVA D	8 SEN A	10 AKOPIAN O	13 VYAKHIREVA A
	1/1 1/1	2/2	1/1	1/1	1/1	1/1
	1/2		2/2	3/5	0/1	
	1/1		1/1		1/1	3/3 3/3
					2-Post	1-Post
17 BOBROVNIKOVA V	22 MARENNIKOVA E	24 BLIZNOVA I	33 ILINA E	40 SLIVINSKAYA E	77 PETROVA M	81 ATKOVA E
	1/1				1/1	
	2/2		0/1			0/1
		1/1 1/1	3/3	0/2 1/1		
1-Missed	1-Blocked			1-Blocked		
84 EROKHINA T	88 KALININA V					

**Team**  
Goals / Shots

5/5	2/2	3/3
3/4		6/11
8/8	1/3	9/9

1-Missed 3-Post 2-Blocked



**Goalkeepers**  
Saves / Shots

2/3	1/2	1/7
1/3	1/1	3/4
2/13	1/4	1/5

1 SEDOYKINA A

1/1	1/1	1/2
1/2	1/1	3/4
0/3	1/3	1/2

84 EROKHINA T

0/1		0/1
0/2	0/1	0/1

88 KALININA V

1/1	0/1	0/4
0/1		
2/8		0/2



# Women's Olympic Qualification Tournaments

## Russia

### Tournament III



## Match Team Statistics

SUN 20 MAR 2016  
18:00  
Astrakhan

Match No: 6

**RUS 37 - 29 SWE**  
(15 - 10) (22 - 19)

Referees: LAH Bojan / SOK David (SLO)

## SWE - Sweden

Players		Shots								Offence		Defence		Penalties			TP	
No.	Name	G/S	%	6m	Wing	9m	7m	FB	BT	AS	TF	ST	BS	YC	2Min	RC		DR
1	BUNDSSEN Johanna									1	1							38:19
3	TEGSTEDT Frida	1/1	100	1/1							1			1				12:09
6	STRÖMBERG Carin	1/1	100			1/1												
7	BLOHM Linn	2/2	100	2/2							2							17:08
9	SAND Louise	1/5	20		1/3			0/2			1							32:03
12	IDEHN Filippa																	21:18
14	WESTBERG Johanna	2/2	100	1/1		1/1					1				1			10:56
15	AHLM Johanna	3/6	50	1/1		2/5					1							18:15
17	TORSTENSON Linnea	1/2	50	1/1		0/1				1	1			1	1			33:00
18	WALL Marie	1/4	25	0/1	1/2	0/1												27:41
20	GULLDEN Isabelle	8/12	67	2/3		0/3	6/6			4	2	1						45:33
24	HAGMAN Nathalie	3/3	100		2/2			1/1		1								43:14
25	WALLEN Angelica	4/4	100	2/2		2/2				4	1			1				39:28
27	ROSENGREN JACOBSEN Sabina										1		2		1			39:26
29	ALM Jenny	2/5	40	1/2		1/3				3	1							27:37
77	DAPANOVIC Jasmina	0/1	0		0/1													13:53
	Bench/Team																	
<b>Totals</b>		29/48	60	11/14	4/8	7/17	6/6	1/3		14	13	1	2	3	3			

Goalkeepers		Total Shots		6m Shots		Wing Shots		9m Shots		7m Shots		Fast Breaks		Breakthroughs	
No.	Name	S/S	%	S/S	%	S/S	%	S/S	%	S/S	%	S/S	%	S/S	%
1	BUNDSSEN Johanna	7/27	26	3/11	27	1/3	33	3/7	43	0/3	0	0/3	0		
12	IDEHN Filippa	1/18	6	0/4	0	0/1	0	1/8	13	0/1	0	0/4	0		
<b>Totals</b>		8/45	18	3/15	20	1/4	25	4/15	27	0/4	0	0/7	0		

Team Shots	Goals	Saves	Missed	Post	Blocked	Total	%
6m Shots	11	2		1		14	79
Wing Shots	4	4				8	50
9m Shots	7	5	3		2	17	41
7m Shots	6				N/A	6	100
Fast Breaks	1	2				3	33
Breakthroughs							
<b>Totals</b>	29	13	3	1	2	48	60

Number of Attacks: 59, Scoring Efficiency: 49%

