



Women's Olympic Qualification Tournaments

Denmark

Tournament II



Match Team Statistics

SUN 20 MAR 2016
17:30
Aarhus

Match No: 5

MNE 23 - 23 ROU
(11 - 15) (12 - 8)

Referees: HORACEK Vaclav / NOVOTNY Jiri (CZE)

MNE - Montenegro

Players		Shots								Offence		Defence		Penalties			TP	
No.	Name	G/S	%	6m	Wing	9m	7m	FB	BT	AS	TF	ST	BS	YC	2Min	RC		DR
1	RAJCIC Marina																	
2	PETROVIC Radmila																	
4	RADICEVIC Jovanka	2/3	67	1/1	1/2						1							30:00
5	GRBIC Itana	0/3	0			0/3				5	7							38:06
10	BULATOVIC Andela	0/1	0						0/1		1							9:26
12	HASANIC Alma																	30:00
14	PAVICEVIC Ivona	2/3	67		2/3							1						42:08
15	KLIKOVAC Andrea	2/6	33	1/1		1/4			0/1	1	1				1	1		40:07
18	KLIKOVAC Bobana	2/2	100	2/2						1	1			1	1			33:42
19	JAUKOVIC Durdina	3/4	75				3/4							1	1			14:36
22	BARJKATAROVIC Sonja																	30:00
32	BULATOVIC Katarina																	
66	RAMUSOVIC Ema									2				1	1			44:19
77	MEHMEDOVIC Majda	4/5	80		2/3			1/1	1/1		1	1						47:36
80	DESPOTOVIC Jelena	8/11	73			2/4			6/7	5	6				2			60:00
90	RAICEVIC Milena																	
	Bench/Team																	
Totals		23/38	61	4/4	5/8	3/11	3/4	1/1	7/10	14	18	2		3	6			

Goalkeepers		Total Shots		6m Shots		Wing Shots		9m Shots		7m Shots		Fast Breaks		Breakthroughs	
No.	Name	S/S	%	S/S	%	S/S	%	S/S	%	S/S	%	S/S	%	S/S	%
1	RAJCIC Marina														
12	HASANIC Alma	3/18	17	1/5	20	1/3	33	0/3	0	0/2	0	0/3	0	1/2	50
22	BARJKATAROVIC Sonja	8/16	50	3/6	50	3/5	60	2/2	100			0/2	0	0/1	0
Totals		11/34	32	4/11	36	4/8	50	2/5	40	0/2	0	0/5	0	1/3	33

Team Shots	Goals	Saves	Missed	Post	Blocked	Total	%
6m Shots	4					4	100
Wing Shots	5	2	1			8	63
9m Shots	3	6				11	27
7m Shots	3	1			N/A	4	75
Fast Breaks	1					1	100
Breakthroughs	7	2		1		10	70
Totals	23	11	1	1	2	38	61

Number of Attacks: 54, Scoring Efficiency: 43%



Women's Olympic Qualification Tournaments

Denmark

Tournament II



Match Team Statistics

SUN 20 MAR 2016
17:30
Aarhus

Match No: 5

MNE 23 - 23 ROU
(11 - 15) (12 - 8)

Referees: HORACEK Vaclav / NOVOTNY Jiri (CZE)

ROU - Romania

Players		Shots								Offence		Defence		Penalties			TP	
No.	Name	G/S	%	6m	Wing	9m	7m	FB	BT	AS	TF	ST	BS	YC	2Min	RC		DR
2	UDRISTIOIU Aneta	2/4	50		2/3				0/1									37:22
3	SZUCS Ibolya Gabriella	0/1	0	0/1											1			31:58
8	NEAGU Cristina																	1:57
9	BRADEANU Aurelia																	
11	PERIANU Gabriela	2/4	50	0/1		1/1		1/1	0/1	5	2	1	2					46:54
12	MUNTEANU Ionica									2								41:08
13	MARIN Luciana	2/3	67			1/1			1/2	4	2	1						34:28
15	ARDEAN ELISEI Valentina	2/2	100	1/1	1/1													10:40
22	MANEA Oana																	
30	UNGUREANU Paula									1								18:52
31	ZAMFIRESCU Maria	3/4	75	1/1		1/2	1/1			3	1	1		1				43:02
36	TANASIE Ana Maria	3/5	60		0/2			3/3			2							49:20
77	BUCESCHI Eliza																	
85	CHINTOAN Florina	6/8	75	5/7				1/1		1	3			1				26:41
88	VIZITIU Patricia	2/7	29			0/5	1/1		1/1	4	3	1			2			55:00
89	CHIPER Laura	1/4	25	0/1	1/3						1							22:38
	Bench/Team																	
Totals		23/42	55	7/12	4/9	3/9	2/2	5/5	2/5	20	14	4	2	2	3			

Goalkeepers		Total Shots		6m Shots		Wing Shots		9m Shots		7m Shots		Fast Breaks		Breakthroughs	
No.	Name	S/S	%	S/S	%	S/S	%	S/S	%	S/S	%	S/S	%	S/S	%
12	MUNTEANU Ionica	7/24	29	0/4	0	1/3	33	4/6	67	1/3	33	0/1	0	1/7	14
30	UNGUREANU Paula	4/10	40			1/4	25	2/3	67	0/1	0			1/2	50
Totals		11/34	32	0/4	0	2/7	29	6/9	67	1/4	25	0/1	0	2/9	22

Team Shots	Goals	Saves	Missed	Post	Blocked	Total	%
6m Shots	7	4		1		12	58
Wing Shots	4	4	1			9	44
9m Shots	3	2	4			9	33
7m Shots	2				N/A	2	100
Fast Breaks	5					5	100
Breakthroughs	2	1	1	1		5	40
Totals	23	11	6	2		42	55

Number of Attacks: 54, Scoring Efficiency: 43%



Women's Olympic Qualification Tournaments

Denmark

Tournament II



Match Team Statistics

SUN 20 MAR 2016
17:30
Aarhus

Match No: 5

MNE 23 - 23 ROU

(11 - 15) (12 - 8)

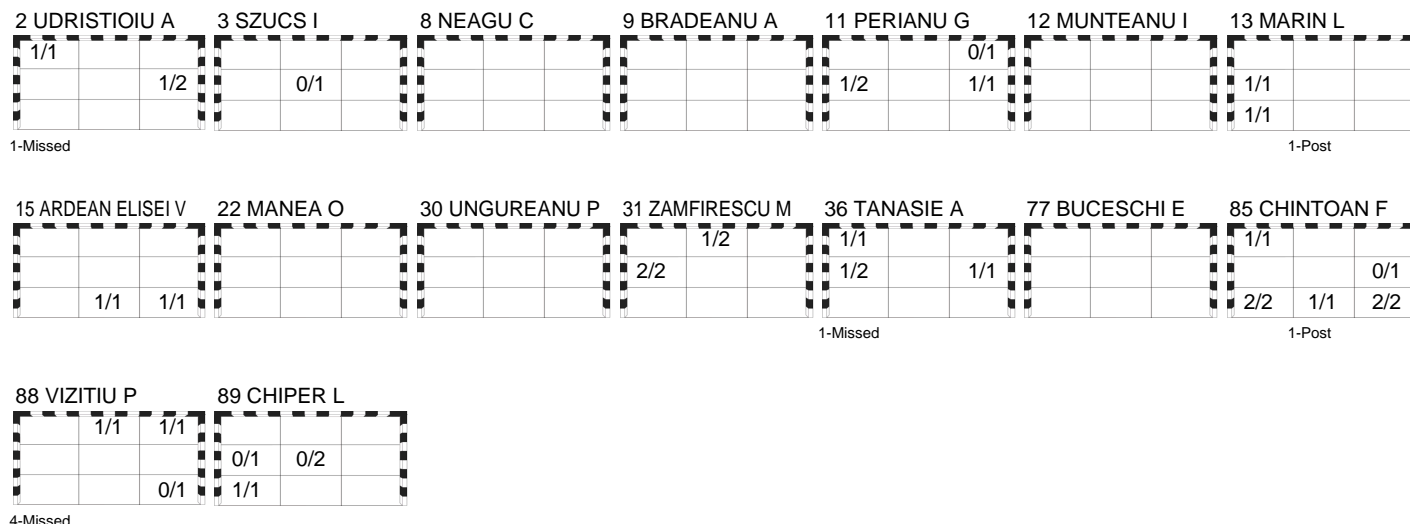
Referees: HORACEK Vaclav / NOVOTNY Jiri (CZE)

ROU - Romania

Shots Distribution

Players

Goals / Shots

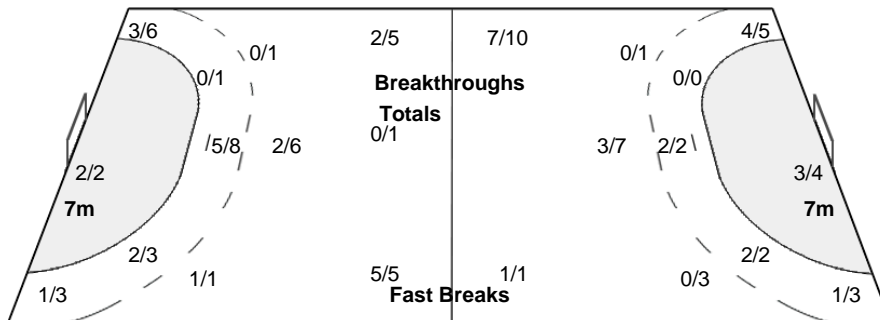


Team Goals / Shots

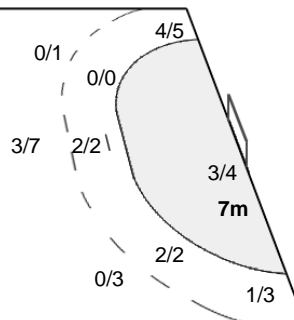
3/3	2/3	1/2
5/8	0/3	3/5
4/4	2/2	3/4

6-Missed 2-Post

Offence



Defence



Goalkeepers Saves / Shots

1/1	1/2	2/7
1/3	2/3	2/5
0/7	0/3	2/3

12 MUNTEANU I

1/1	1/1	1/4
1/3	2/3	1/3
0/6	0/3	

30 UNGUREANU P

	0/1	1/3
		1/2
0/1		2/3

Legend:		
% Efficiency	2Min 2 Minute Suspensions	6m 6 metre Shots
AS Assists	BS Blocked Shots	BT Breakthroughs
G/S Goals/Shots	N/A Not Applicable	No. Uniform Number
ST Steals	TO Turnover	TP Time Played
		7m 7 metre Shots
		DR Disqualification with Report
		RC Red Cards
		Wing Wing Shots
		9m 9 metre Shots
		FB Fast Breaks
		S/S Saves/Shots
		YC Yellow Cards