



IHF Women's Youth (U18) World Championship

Poland (Kielce)

Placement Match 3-4



Match Team Statistics

Korea 34 - 27 Sweden

19.8.2018. 15:30

Match No. 91

(17 - 14) (17 - 13)

Attendance: 250

Hall Legionow

Referees: Viktoriia Alpaidze (RUS) / Tatiana Berezkina (RUS)

Korea

#	Surname and name	S	Goals / shots									Attack				Def.			Penalties			TP											
			Tot.	%	9m	6m	Wing	7m	FB	Brk.	LD	As.	E7	E2	TF	St.	C7	Blk	YC	2m	RC		BC										
1	YEO Dahee	S	1/1	100									1/1																			47:11	
9	CHOI Gyeongbin		2/2	100						2/2																						1:22	
11	JEONG Yuhee		1/1	100		1/1																										0:45	
12	LEE Minji																															11:34	
13	JEONG Hyunhui																																
17	PARK Soojeong																																
19	SON Minkyong		2/2	100		1/1									1				1				1									37:20	
20	JO Eunbeen		1/1	100				1/1																									1:52
21	LEE Daeun	S	1/1	100		1/1								1				1														23:59	
22	KIM Sumin	S	3/9	33				3/9						4	2			2	1													60:00	
23	OH Yedam	S	6/8	75	0/1	4/4				1/1			1/2	8	1	1	4	2														59:06	
24	KIM Jihyun		1/2	50									1/2																			37:12	
26	KIM Hagyeong																																
27	PARK Soyoun	S	2/4	50	1/1									2				2				1										58:41	
29	YUN Yejin	S	9/11	82				7/9		1/1			1/1	1	1		1	3						1								44:48	
31	WOO Bitna	S	5/11	45	4/8					1/3				3			2			1			1									36:10	
	Team / bench																																
	UKUPNO		34/53	64	5/10	7/7	11/19	3/5	3/4	2/4	3/4	19	5	1	13	7	1	1	2	1	0	0											

#	Surname and name	Saves / shots								
		Tot.	%	9m	6m	Wing	7m	FB	Brk.	LD
1	YEO Dahee	6/24	25	3/10	1/8	1/1		1/2	0/3	
12	LEE Minji	1/10	10	1/4	0/2		0/1	0/2	0/1	
	TOTAL	7/34	21	4/14	1/10	1/1	0/1	1/4	0/4	0/0

Coach: **Seong Ok Oh**

Number of attacks: 62, Efficiency: 55%, Average Duration: 27,3 seconds

Attack by type of defense

	Shots	9m	6m	Wing	TF	E7	E2
On def. 6-0	24/37	5/9	7/7	11/19	12	4	0
On def. 5-1	0/0	0/0	0/0	0/0	1	0	0
On def. 3-2-1	1/3	0/1	0/0	0/0	0	1	1
Fastbreak	3/4				0	0	0

Defense by type

	Total	9m	6m	Wing	Stl.	C7	2m
Def. 6-0	1/1	1/1	0/0	0/0	6	0	0
Def. 5-1	4/5	2/3	2/2	0/0	0	0	0
Def. 4-2	1/2	1/2	0/0	0/0	0	1	0
Def. 3-2-1	17/28	6/14	7/8	0/2	1	0	1
Fastbreak	3/5				0	0	0

Attack with goalkeeper out

	Attack				Reaction		
	Att.	Eff.	Shots	TF	FB	LD	Tot.
GK in	62	53%	33/51	13	3/5	0/0	3/5

GK out attack is counted if one part or whole attack was GK out

Defense with opponent goalkeeper out

	Attack				Reaction		
	Att.	Eff.	Shots	TF	FB	LD	Tot.
GK in	55	44%	24/37	20	3/4	3/4	6/8

Attack with player superiority/minority

	Attack				Reaction		
	Att.	Eff.	Shots	TF	FB	LD	Tot.
Superiority +1	2	50%	1/2	0	0/0	0/0	0/0
Normal	45	53%	24/35	13	3/5	0/0	3/5
Minority -1	2	50%	1/2	0	0/0	0/0	0/0

Player superiority counted at the end of attack (in case it changes during attack)

Defense with player superiority/minority

	Attack				Reaction		
	Att.	Eff.	Shots	TF	FB	LD	Tot.
Minority -1	3	67%	2/4	0	0/0	0/0	0/0
Normal	44	39%	17/28	17	3/4	3/4	6/8
Superiority +1	3	67%	2/3	0	0/0	0/0	0/0

Jersey number Tot. Total shooting 6m 6m (line) shooting 9m 9m shooting Wng. Wing shooting FB Fastbreak sh. 7m 7m penalty sh.
 Brk. Breakthrough sh. LD Long distance sh. As. Assists E7 Earned 7m pen. TF Technical Faults St. Steals 2m 2m punishments
 C7. Committed 7m E2 Earned 2m pun. YC. Yellow cards RC Red cards BC Blue cards Blk. Blocks S Starting Line-up



IHF Women's Youth (U18) World Championship

Poland (Kielce)

Placement Match 3-4



Match Team Statistics

Match No. 91

Korea 34 - 27 Sweden

(17 - 14) (17 - 13)

19.8.2018. 15:30

Attendance: 250

Hall Legionow

Referees: Viktoriia Alpaidze (RUS) / Tatiana Berezkina (RUS)

Shot distribution by player

9 G. Choi

		1/1
1/1		

11 Y. Jeong

1/1		

13 H. Jeong

17 S. Park

19 M. Son

1/1		1/1

20 E. Jo

		1/1

21 D. Lee

		1/1

22 S. Kim

0/1	0/1	2/4

2 miss. 1/1 lob

23 Y. Oh

		1/1
	1/1	2/2
		1/1

1 post 1 block 1/1 lob

24 J. Kim

1/1		

1 post

26 H. Kim

27 S. Park

		0/1
1/2		1/1

29 Y. Yun

	1/1	
3/3		4/4

2 miss. 1/1 lob

31 B. Woo

1/1		2/2
	0/1	0/1
2/3		0/1

1 post 1 block

TOTAL

2/2		3/4
1/1	2/3	3/4
9/12	0/1	10/13

3 post 4 miss. 2 block 3/3 lob

Saves distribution goalkeepers

1 D. Yeo

0/3		0/4
1/2		
1/5	1/1	3/9

12 M. Lee

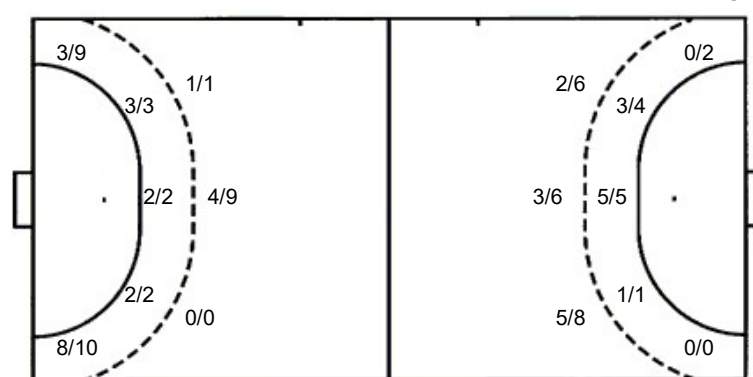
0/1		0/1
1/1	0/1	0/1
0/2	0/1	0/2

TOTAL

0/4		0/5
2/3	0/1	0/1
1/7	1/2	3/11

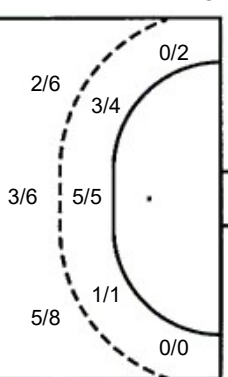
Shots by position

ATTACK



7m penalties 3/5
Fastbreak 3/4
Breakthrough 2/4
Long dist. 3/4

DEFENSE



7m penalties 1/1
Fastbreak 3/5
Breakthrough 4/4
Long dist. 0/0

Shooting statistics

Position	Goals	Sav.	Miss.	Post	Blk.	Total	%
Back (9m)	5	3	0	0	2	10	50
Line (6m)	7	0	0	0	0	7	100
Wing	11	4	4	0	0	19	58
7m penalties	3	1	0	1	0	5	60
Fastbreak	3	0	0	1	0	4	75
Breakthrough	2	2	0	0	0	4	50
Total	31	10	4	2	2	49	63

Jersey number Tot. Total shooting 6m 6m (line) shooting 9m 9m shooting Wng. Wing shooting FB Fastbreak sh. 7m 7m penalty sh.
Brk. Breakthrough sh. LD Long distance sh. As. Assists E7 Earned 7m pen. TF Technical Faults St. Steals 2m 2m punishments
C7. Committed 7m E2 Earned 2m pun. YC. Yellow cards RC Red cards BC Blue cards Blk. Blocks S Starting Line-up



IHF Women's Youth (U18) World Championship

Poland (Kielce)

Placement Match 3-4



Match Team Statistics

Match No. 91

Korea 34 - 27 Sweden

(17 - 14) (17 - 13)

19.8.2018. 15:30

Attendance: 250

Hall Legionow

Referees: Viktoriia Alpaidze (RUS) / Tatiana Berezkina (RUS)

Shot distribution by player

5 T. Alm

		1/1
		1/1
1/1		

1 miss.

6 L. Cardell

	1/1	

7 J. Moreno

0/1		

1 post

8 E. Wahlström

13 E. Wallenberg

1/1		

14 M. Sandberg

1/1		
1/1	1/1	1/2

1 post

15 C. Dahlström

18 Z. Jarvin

1/1		
0/1		
		1/1

19 N. Dano

1/1		
1/1		3/3

1 post 1 miss.

20 A. Sjöstrand Hallman

1/1		2/2
1/1	0/1	

22 W. Schelin

23 I. Andersson

1/1		2/2
1/2		3/5

1 post 1 miss. 1 block

24 K. Dahlberg

TOTAL

4/4		5/5
1/3	1/1	1/1
6/7	1/2	8/11

4 post 3 miss. 1 block

Saves distribution goalkeepers

1 W. Lundahl

12 J. Hultberg-Dahlgren

0/2		1/4
0/1	1/2	1/3
3/11	1/1	3/12

16 T. Espling-Ek

	0/2	0/1
0/1		0/1

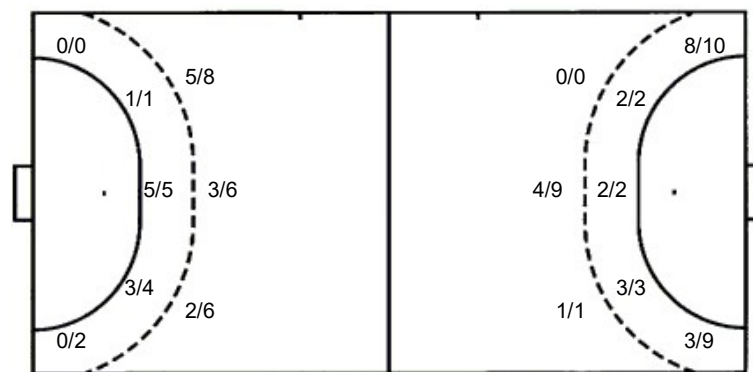
TOTAL

0/2		1/4
0/1	1/4	1/4
3/12	1/1	3/13

Shots by position

ATTACK

DEFENSE



Shooting statistics

Position	Goals	Sav.	Miss.	Post	Blk.	Total	%
Back (9m)	10	4	3	2	1	20	50
Line (6m)	9	1	0	0	0	10	90
Wing	0	1	0	1	0	2	0
7m penalties	1	0	0	0	0	1	100
Fastbreak	3	1	0	1	0	5	60
Breakthrough	4	0	0	0	0	4	100
Total	27	7	3	4	1	42	64

7m penalties 1/1
Fastbreak 3/5
Breakthrough 4/4
Long dist. 0/0

7m penalties 3/5
Fastbreak 3/4
Breakthrough 2/4
Long dist. 3/4

Jersey number Tot. Total shooting 6m 6m (line) shooting 9m 9m shooting Wng. Wing shooting FB Fastbreak sh. 7m 7m penalty sh.
Brk. Breakthrough sh. LD Long distance sh. As. Assists E7 Earned 7m pen. TF Technical Faults St. Steals 2m 2m punishments
C7. Committed 7m E2 Earned 2m pun. YC. Yellow cards RC Red cards BC Blue cards Blk. Blocks S Starting Line-up