



IHF Women's Youth (U18) World Championship

Poland (Kielce)

Placement Match 5-6



Match Team Statistics

Match No. 90

Germany 28 - 25 Denmark

(9 - 13) (16 - 12) (SO: 3 - 0)

19.8.2018. 13:00

Attendance: 203

Hall Legionow

Referees: Maria Bennani (SWE) / Safia Bennani (SWE)

Germany

#	Surname and name	S	Goals / shots									Attack				Def.			Penalties			TP		
			Tot.	%	9m	6m	Wing	7m	FB	Brk.	LD	As.	E7	E2	TF	St.	C7	Blk	YC	2m	RC		BC	
1	ZENNER Charley	S																						17:58
2	UHLMANN Pauline																							0:14
3	HAUSHERR Lena	S	1/1	100	1/1																			29:46
6	KOCKEL Leonie		1/4	25	0/2																			9:47
7	WEISE Julia	S	5/5	100		1/1	1/1																	60:00
9	ANDREAS Tamara		0/2	0		0/2																		12:24
10	MÜHLNER Maxi	S	3/4	75		2/3																		38:18
11	QUIST Laetitia	S	6/10	60	2/5																			51:46
12	WALDENMAIER Laura																							40:53
14	VON PEREIRA Aimée	S	3/6	50	0/3																			45:06
15	AGWUNEDU Ndidi		0/2	0			0/2																	30:09
17	WULF Mariel																							
18	NEUBRANDER Lea	S	0/2	0	0/1	0/1																		14:58
19	GOLLA Paulina		3/5	60	2/3																			22:26
24	MICHALCZIK Marie		1/1	100	1/1																			3:51
66	BLECKMANN Dana		5/8	63	1/4	1/1																		42:24
	Team / bench																							
	UKUPNO		28/50	56	7/20	4/8	1/3	5/5	6/8	5/6	0/0	8	2	0	10	3	0	0	2	2	0	0		

#	Surname and name	Saves / shots								
		Tot.	%	9m	6m	Wing	7m	FB	Brk.	LD
1	ZENNER Charley	1/9	11	0/3		1/2		0/2	0/2	
12	WALDENMAIER Laura	13/30	43	6/15	1/4	1/3	2/2	0/1	3/5	
	TOTAL	14/39	36	6/18	1/4	2/5	2/2	0/3	3/7	0/0

Coach: **Maik Nowak**

Number of attacks: 56, Efficiency: 50%, Average Duration: 57,9 seconds

Attack by type of defense

	Shots	9m	6m	Wing	TF	E7	E2
On def. 6-0	15/34	7/20	3/7	1/2	10	2	0
On def. 5-1	2/3	0/0	1/1	0/1	0	0	0
Fastbreak	6/8				0	0	0

Defense by type

	Total	9m	6m	Wing	Stl.	C7	2m
Def. 6-0	18/29	10/16	1/2	3/6	3	0	2
Def. 5-1	4/11	2/6	2/2	0/0	0	0	0
Fastbreak	3/3				0	0	0

Attack with goalkeeper out

	Attack				Reaction		
	Att.	Eff.	Shots	TF	FB	LD	Tot.
GK in	56	50%	28/50	10	3/3	0/0	3/3

GK out attack is counted if one part or whole attack was GK out

Defense with opponent goalkeeper out

	Attack				Reaction		
	Att.	Eff.	Shots	TF	FB	LD	Tot.
GK in	55	45%	25/46	14	6/8	0/0	6/8

Attack with player superiority/minority

	Attack				Reaction		
	Att.	Eff.	Shots	TF	FB	LD	Tot.
Normal	47	55%	26/43	8	1/1	0/0	1/1
Minority -1	4	0%	0/2	1	2/2	0/0	2/2

Player superiority counted at the end of attack (in case it changes during attack)

Defense with player superiority/minority

	Attack				Reaction		
	Att.	Eff.	Shots	TF	FB	LD	Tot.
Minority -1	4	125%	5/5	0	0/0	0/0	0/0
Normal	46	41%	19/38	12	5/7	0/0	5/7

Jersey number Tot. Total shooting 6m 6m (line) shooting 9m 9m shooting Wng. Wing shooting FB Fastbreak sh. 7m 7m penalty sh.
 Brk. Breakthrough sh. LD Long distance sh. As. Assists E7 Earned 7m pen. TF Technical Faults St. Steals 2m 2m punishments
 C7. Committed 7m E2 Earned 2m pun. YC. Yellow cards RC Red cards BC Blue cards Blk. Blocks S Starting Line-up



IHF Women's Youth (U18) World Championship

Poland (Kielce)

Placement Match 5-6



Match Team Statistics

Match No. 90

Germany 28 - 25 Denmark

(9 - 13) (16 - 12) (SO: 3 - 0)

19.8.2018. 13:00

Attendance: 203

Hall Legionow

Referees: Maria Bennani (SWE) / Safia Bennani (SWE)

Shot distribution by player

2 P. Uhlmann

3 L. Hausherr

		1/1

6 L. Kockel

1/2		
	0/1	

1 miss.

7 J. Weise

2/2		1/1
1/1		

1/1 lob

9 T. Andreas

1 post 1 miss.

10 M. Mühlner

		2/2
1/1		

1 post

11 L. Quist

1/1	0/1	1/1
	1/1	3/4

1 post 1 miss.

14 A. Von Pereira

	0/1	
0/1		
		3/3

1 miss.

15 N. Agwunedu

		0/1

1 miss.

17 M. Wulf

18 L. Neubrander

	0/1	

1 post

19 P. Golla

		1/1
1/1		
0/1	0/1	1/1

24 M. Michalczyk

		1/1

66 D. Bleckmann

1/1		
		1/1
1/1	0/1	1/2

1 post 1/1 lob

TOTAL

3/3	0/2	3/3
4/6	0/1	5/5
2/3	1/4	8/11

5 post 5 miss. 2/2 lob

Saves distribution goalkeepers

1 C. Zenner

1/4		0/1
0/1		
	0/1	0/1

12 L. Waldenmaier

2/3		0/10
3/4	1/1	2/3
3/5	1/1	1/3

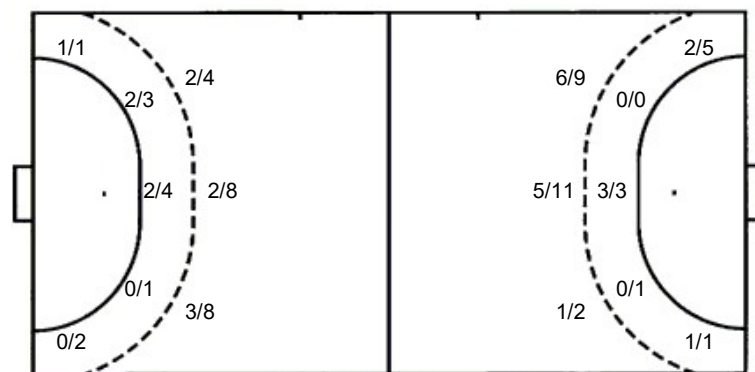
TOTAL

3/7		0/11
3/5	1/1	2/3
3/5	1/2	1/4

Shots by position

ATTACK

DEFENSE



7m penalties 5/5
Fastbreak 6/8
Breakthrough 5/6
Long dist. 0/0

7m penalties 0/3
Fastbreak 3/3
Breakthrough 4/8
Long dist. 0/0

Shooting statistics

Position	Goals	Sav.	Miss.	Post	Bik.	Total	%
Back (9m)	7	8	3	2	0	20	35
Line (6m)	4	0	1	3	0	8	50
Wing	1	1	1	0	0	3	33
7m penalties	5	0	0	0	0	5	100
Fastbreak	6	2	0	0	0	8	75
Breakthrough	5	1	0	0	0	6	83
Total	28	12	5	5	0	50	56

Jersey number Tot. Total shooting 6m 6m (line) shooting 9m 9m shooting Wng. Wing shooting FB Fastbreak sh. 7m 7m penalty sh.
Brk. Breakthrough sh. LD Long distance sh. As. Assists E7 Earned 7m pen. TF Technical Faults St. Steals 2m 2m punishments
C7. Committed 7m E2 Earned 2m pun. YC. Yellow cards RC Red cards BC Blue cards Blk. Blocks S Starting Line-up



IHF Women's Youth (U18) World Championship

Poland (Kielce)

Placement Match 5-6



Match Team Statistics

Match No. 90

Germany 28 - 25 Denmark

(9 - 13) (16 - 12) (SO: 3 - 0)

19.8.2018. 13:00

Attendance: 203

Hall Legionow

Referees: Maria Bennani (SWE) / Safia Bennani (SWE)

Denmark

#	Surname and name	S	Goals / shots								Attack				Def.			Penalties			TP		
			Tot.	%	9m	6m	Wing	7m	FB	Brk.	LD	As.	E7	E2	TF	St.	C7	Blk	YC	2m		RC	BC
1	ASKVIST Laura Louisa Ferlov																						0:07
2	GAMYS Sylvie	S	1/2	50				1/2									1						32:45
3	HEDEGAARD Frederikke Glavind	S																					20:14
4	KLOSTERMANN Mette Katrine																						
5	THEIL Emilie Frese		1/2	50	0/1											2		1					14:41
6	FROKJAER-JENSEN Naja		1/1	100	1/1												1						16:25
7	STEFFENSEN Emilie Bodholdt	S	3/12	25	2/8	0/1		0/1							2	2	4						33:21
8	LAURSEN Emma																						
9	MOLLER Michala Elsberg	S	8/10	80	7/8			0/1	1/1					1		2							52:57
12	KRISTENSEN Anna Opstrup																						18:07
13	HANSEN Christina Jakobsen	S	5/5	100	1/1	3/3				1/1										1			43:35
14	WIERZBA Anna Berger	S	2/4	50							2/4					2							45:19
17	FAARTOFT Camilla		1/5	20	1/3			0/1			0/1			3		3	1	1		1			33:42
20	JENSEN Louise Bak	S												1									41:46
21	HANSEN Andrea U Aagot		1/1	100				1/1															39:46
24	HALILCEVIC Elma		2/4	50				1/3			1/1												27:15
	Team / bench																						
	UKUPNO		25/46	54	12/22	3/4	3/6	0/3	3/3	4/8	0/0	7	0	2	14	2	2	0	2	0	0	0	

#	Surname and name	Saves / shots								
		Tot.	%	9m	6m	Wing	7m	FB	Brk.	LD
1	ASKVIST Laura Louisa Ferlov	0/1	0				0/1			
12	KRISTENSEN Anna Opstrup	5/17	29	3/5	0/2	0/1	0/3	1/3	1/3	
20	JENSEN Louise Bak	7/22	32	5/10	0/2	1/1	0/1	1/5	0/3	
	TOTAL	12/40	30	8/15	0/4	1/2	0/5	2/8	1/6	0/0

Coach: Flemming Dam Larsen

Number of attacks: 55, Efficiency: 45%, Average Duration: 50,2 seconds

Attack by type of defense

	Shots	9m	6m	Wing	TF	E7	E2
On def. 6-0	18/29	10/16	1/2	3/6	8	0	2
On def. 5-1	4/11	2/6	2/2	0/0	6	0	0
Fastbreak	3/3				0	0	0

Defense by type

	Total	9m	6m	Wing	Stl.	C7	2m
Def. 6-0	15/34	7/20	3/7	1/2	1	2	0
Def. 5-1	2/3	0/0	1/1	0/1	1	0	0
Fastbreak	6/8				0	0	0

Attack with goalkeeper out

	Attack				Reaction		
	Att.	Eff.	Shots	TF	FB	LD	Tot.
GK in	55	45%	25/46	14	6/8	0/0	6/8

GK out attack is counted if one part or whole attack was GK out

Defense with opponent goalkeeper out

	Attack				Reaction		
	Att.	Eff.	Shots	TF	FB	LD	Tot.
GK in	56	50%	28/50	10	3/3	0/0	3/3

Attack with player superiority/minority

	Attack				Reaction		
	Att.	Eff.	Shots	TF	FB	LD	Tot.
Superiority +1	4	125%	5/5	0	0/0	0/0	0/0
Normal	46	41%	19/38	12	5/7	0/0	5/7

Player superiority counted at the end of attack (in case it changes during attack)

Defense with player superiority/minority

	Attack				Reaction		
	Att.	Eff.	Shots	TF	FB	LD	Tot.
Normal	47	55%	26/43	8	1/1	0/0	1/1
Superiority +1	4	0%	0/2	1	2/2	0/0	2/2

Jersey number Tot. Total shooting 6m 6m (line) shooting 9m 9m shooting Wng. Wing shooting FB Fastbreak sh. 7m 7m penalty sh.
 Brk. Breakthrough sh. LD Long distance sh. As. Assists E7 Earned 7m pen. TF Technical Faults St. Steals 2m 2m punishments
 C7. Committed 7m E2 Earned 2m pun. YC. Yellow cards RC Red cards BC Blue cards Blk. Blocks S Starting Line-up



IHF Women's Youth (U18) World Championship

Poland (Kielce)

Placement Match 5-6



Match Team Statistics

Match No. 90

Germany 28 - 25 Denmark

(9 - 13) (16 - 12) (SO: 3 - 0)

19.8.2018. 13:00

Attendance: 203

Hall Legionow

Referees: Maria Bennani (SWE) / Safia Bennani (SWE)

Shot distribution by player

2 S. Gamys

0/1		

1/1 lob

3 F. Hedegaard

4 M. Klostermann

5 E. Theil

1/1		

1 miss.

6 N. Frokjaer-Jensen

1/1

7 E. Steffensen

		2/2
1/3	0/1	0/2
0/2		

1 post 1 miss.

8 E. Laursen

9 M. Moller

3/3		4/4
1/1		

2 post

13 C. Hansen

		2/2
		1/1
		2/2

14 A. Wierzba

1/1		
0/1	1/1	

17 C. Faarhoff

0/2		1/1
	0/1	0/1

21 A. Hansen

1/1		

24 E. Haliicevic

		2/2
0/1		

1 miss.

TOTAL

4/7		11/11
2/5	0/1	1/3
2/5	1/2	3/4

3 post 3 miss. 1/1 lob

Saves distribution goalkeepers

1 L. Askvist

		0/1

12 A. Kristensen

0/1		0/1
0/2	1/1	0/3
1/3	2/3	1/2

20 L. Jensen

0/2	2/2	0/2
2/4		0/2
	1/1	2/8

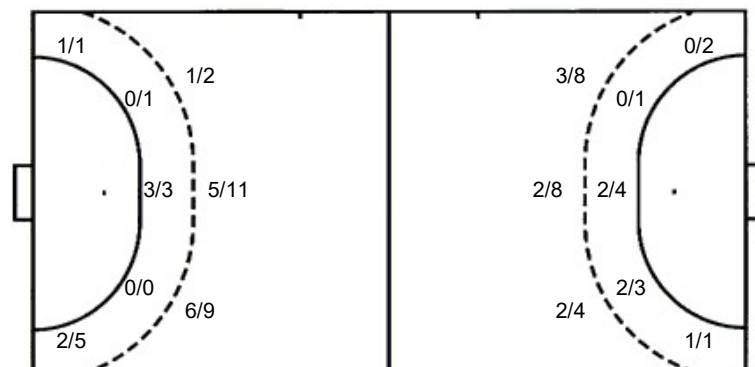
TOTAL

0/3	2/2	0/3
2/6	1/1	0/5
1/3	3/4	3/11

Shots by position

ATTACK

DEFENSE



7m penalties 0/3
Fastbreak 3/3
Breakthrough 4/8
Long dist. 0/0

7m penalties 5/5
Fastbreak 6/8
Breakthrough 5/6
Long dist. 0/0

Shooting statistics

Position	Goals	Sav.	Miss.	Post	Blk.	Total	%
Back (9m)	12	6	2	2	0	22	55
Line (6m)	3	1	0	0	0	4	75
Wing	3	2	1	0	0	6	50
7m penalties	0	2	0	1	0	3	0
Fastbreak	3	0	0	0	0	3	100
Breakthrough	4	4	0	0	0	8	50
Total	25	15	3	3	0	46	54

Jersey number Tot. Total shooting 6m 6m (line) shooting 9m 9m shooting Wng. Wing shooting FB Fastbreak sh. 7m 7m penalty sh.
Brk. Breakthrough sh. LD Long distance sh. As. Assists E7 Earned 7m pen. TF Technical Faults St. Steals 2m 2m punishments
C7. Committed 7m E2 Earned 2m pun. YC. Yellow cards RC Red cards BC Blue cards Blk. Blocks S Starting Line-up