



# IHF Women's Youth (U18) World Championship

Poland (Kielce)

Placement Match 5-8



Match Team Statistics

Match No. 85

## Spain 20 - 24 Germany

(9 - 11) (11 - 13)

18.8.2018. 12:30

Attendance: 200

Hall Legionow

Referees: Raymel Reyes (CUB) / Alexys Zuniga (CUB)

### Spain

#	Surname and name	S	Goals / shots									Attack				Def.			Penalties				TP				
			Tot.	%	9m	6m	Wing	7m	FB	Brk.	LD	As.	E7	E2	TF	St.	C7	Blk	YC	2m	RC	BC					
24	PALOMO PINEDA María	S	2/5	40		2/5									1												42:07
25	FERNANDEZ-AGUSTÍ MARTÍNEZ GAND Isabel	S	3/6	50			1/4			2/2							1										42:40
26	SOBREPERA CASOL Janna	S	7/14	50	2/9				4/4	1/1				1													34:57
27	SPUGNINI SANTOME Alba		0/1	0	0/1										2	1											21:56
28	VALLINA GUERRA Sandra																										
29	MORALES RODRIGUEZ Yadira																										
30	MARTINEZ RUIZ Elena	S	0/5	0	0/3					0/1	0/1			3	1	1	1					1					47:13
31	MOLES LOPEZ Sara	S	3/4	75	0/1	1/1	2/2							1			1	1				1					60:00
32	MENDEZ GARCÍA Patricia																		1				1				8:53
33	SUAREZ MARTÍNEZ-GANDÍA Ines													1			1										12:11
34	ARCOS POVEDA Paula		3/3	100				1/1			2/2						2	1									27:18
35	DIAZ VENTAS Julia																										
38	CAPDEVILLA BARBANY Martina		0/6	0	0/4						0/2			2			1										30:36
39	LOIDI ETXANIZ June	S	1/3	33	0/2												1										21:14
48	QUEVEDO PADRON Yuli Dacil		1/1	100						1/1													1				19:24
55	WIGGINS SANCHO Nicole	S																									42:29
Team / bench																	1						1				
UKUPNO			20/48	42	2/20	3/6	3/6	5/5	4/5	3/6	0/0			8	4	2	10	3	3	1	2	2	0	0			

#	Surname and name	Saves / shots								
		Tot.	%	9m	6m	Wing	7m	FB	Brk.	LD
33	SUAREZ MARTÍNEZ-GANDÍA Ines	3/9	33	3/3	0/3	0/1	0/2			
55	WIGGINS SANCHO Nicole	6/23	26	2/4	4/9	0/1	0/1	0/5	0/3	
TOTAL		9/32	28	5/7	4/12	0/2	0/3	0/5	0/3	0/0

Coach: Alfredo Rodriguez Alvarez

Number of attacks: 56, Efficiency: 36%, Average Duration: 37,8 seconds

### Attack by type of defense

	Shots	9m	6m	Wing	TF	E7	E2
On def. 6-0	11/38	2/20	3/6	3/6	10	4	2
Fastbreak	4/5				0	0	0

### Attack with goalkeeper out

	Attack				Reaction		
	Att.	Eff.	Shots	TF	FB	LD	Tot.
GK out (7 on 6)	3	67%	2/2	1	0/0	1/1	1/1
GK out pl. minority	2	50%	1/1	1	0/0	0/0	0/0
GK in	51	33%	17/45	8	5/5	0/0	5/5

GK out attack is counted if one part or whole attack was GK out

### Attack with player superiority/minority

	Attack				Reaction		
	Att.	Eff.	Shots	TF	FB	LD	Tot.
Superiority +1	7	43%	3/6	1	0/0	0/0	0/0
Normal	35	31%	11/31	7	4/4	1/1	5/5
Minority -1	6	33%	2/4	1	0/0	0/0	0/0

Player superiority counted at the end of attack (in case it changes during attack)

### Defense by type

	Total	9m	6m	Wing	Stl.	C7	2m
Def. 6-0	7/16	1/6	4/7	1/2	3	3	2
Def. 5-1	3/7	0/2	2/3	0/1	0	0	0
Def. 4-2	4/7	1/3	1/2	1/1	0	0	0
Def. press.	1/2	0/1	1/1	0/0	0	0	0
Fastbreak	5/5				0	0	0

### Defense with opponent goalkeeper out

	Attack				Reaction		
	Att.	Eff.	Shots	TF	FB	LD	Tot.
GK out (7 on 6)	0	0%	0/0	0	0/0	0/0	0/0
GK out pl. super.	0	0%	0/0	0	0/0	0/0	0/0
GK in	55	44%	24/41	15	4/5	0/0	4/5

### Defense with player superiority/minority

	Attack				Reaction		
	Att.	Eff.	Shots	TF	FB	LD	Tot.
Minority -1	5	80%	4/4	1	0/0	0/0	0/0
Normal	37	38%	14/26	11	3/4	0/0	3/4
Superiority +1	5	40%	2/4	1	1/1	0/0	1/1

# Jersey number Tot. Total shooting 6m 6m (line) shooting 9m 9m shooting Wng Wing shooting FB Fastbreak sh. 7m 7m penalty sh.  
 Brk. Breakthrough sh. LD Long distance sh. As. Assists E7 Earned 7m pen. TF Technical Faults St. Steals 2m 2m punishments  
 C7. Committed 7m E2 Earned 2m pun. YC. Yellow cards RC Red cards BC Blue cards Blk. Blocks S Starting Line-up



# IHF Women's Youth (U18) World Championship

Poland (Kielce)

Placement Match 5-8



Match Team Statistics

Match No. 85

**Spain 20 - 24 Germany**

(9 - 11) (11 - 13)

18.8.2018. 12:30

Attendance: 200

Hall Legionow

Referees: Raymel Reyes (CUB) / Alexys Zuniga (CUB)

## Shot distribution by player

24 M. Palomo Pineda

0/1		0/1
1/1	1/1	

1 miss.

25 I. Fernandez-Agusti Martínez Gand

		1/1
	0/1	

2 miss. 2/2 lob

26 J. Sobrepera Casol

	1/1	1/1
1/1		1/2
2/2		1/1

2 post 2 miss. 2 block

27 A. Spugnini Santome

		0/1

28 S. Vallina Guerra


29 Y. Morales Rodríguez


30 E. Martinez Ruiz

0/1		
		0/1
	0/1	

1 miss. 1 block

31 S. Moles Lopez

1/1		1/1
	1/2	

32 P. Mendez Garcia


34 P. Arcos Poveda

1/1		
		1/1
1/1		

35 J. Diaz Ventas


38 M. Capdevilla Barbany

0/1		
	0/1	0/1
		0/1

1 post 1 miss.

39 J. Loidi Etxaniz

1/1		

2 block

48 Y. Quevedo Padron

		1/1

## TOTAL

1/3	1/1	1/1
3/4	0/1	5/10
4/4	2/5	1/2

3 post 7 miss. 5 block 2/2 lob

## Saves distribution goalkeepers

33 I. Suarez Martínez-Gandia

0/1	0/1	0/2
1/1	0/2	2/3

55 N. Wiggins Sancho

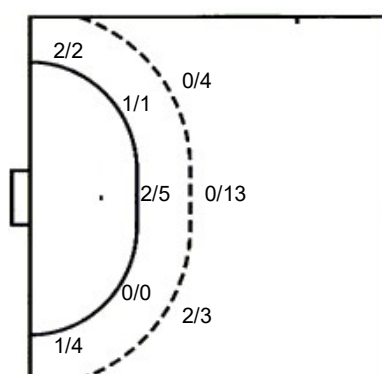
0/2		0/3
1/3	2/2	2/10
0/1		0/1

## TOTAL

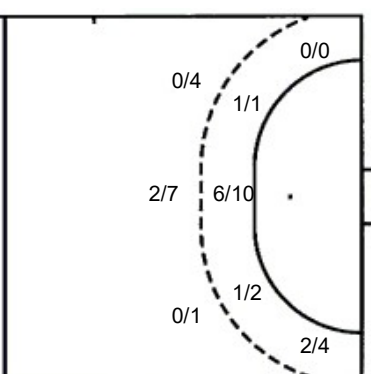
0/2		0/3
1/4	2/3	2/12
1/2	0/2	2/4

## Shots by position

### ATTACK



### DEFENSE



7m penalties 5/5  
Fastbreak 4/5  
Breakthrough 3/6  
Long dist. 0/0

7m penalties 3/3  
Fastbreak 5/5  
Breakthrough 3/3  
Long dist. 1/1

## Shooting statistics

Position	Goals	Sav.	Miss.	Post	Blk.	Total	%
Back (9m)	2	7	4	2	5	20	10
Line (6m)	3	2	1	0	0	6	50
Wing	3	1	2	0	0	6	50
7m penalties	5	0	0	0	0	5	100
Fastbreak	4	1	0	0	0	5	80
Breakthrough	3	2	0	1	0	6	50
<b>Total</b>	<b>20</b>	<b>13</b>	<b>7</b>	<b>3</b>	<b>5</b>	<b>48</b>	<b>42</b>

# Jersey number    Tot. Total shooting    6m 6m (line) shooting    9m 9m shooting    Wng. Wing shooting    FB Fastbreak sh.    7m 7m penalty sh.  
Brk. Breakthrough sh.    LD Long distance sh.    As. Assists    E7 Earned 7m pen.    TF Technical Faults    St. Steals    2m 2m punishments  
C7. Committed 7m    E2 Earned 2m pun.    YC. Yellow cards    RC Red cards    BC Blue cards    Blk. Blocks    S Starting Line-up



# IHF Women's Youth (U18) World Championship

Poland (Kielce)

Placement Match 5-8



Match Team Statistics

## Spain 20 - 24 Germany

18.8.2018. 12:30

Match No. 85

(9 - 11) (11 - 13)

Attendance: 200

Hall Legionow

Referees: Raymel Reyes (CUB) / Alexys Zuniga (CUB)

### Germany

#	Surname and name	S	Goals / shots									Attack				Def.			Penalties				TP					
			Tot.	%	9m	6m	Wing	7m	FB	Brk.	LD	As.	E7	E2	TF	St.	C7	Blk	YC	2m	RC	BC						
1	ZENNER Charley	S												1														60:00
2	UHLMANN Pauline		3/3	100		2/2	1/1																					14:16
3	HAUSHERR Lena	S												2														30:00
6	KOCKEL Leonie		1/2	50	1/2																							16:56
7	WEISE Julia	S	7/9	78		1/1	1/3			5/5				1	1													45:44
9	ANDREAS Tamara		3/3	100		3/3								2	1		2											24:18
10	MÜHLNER Maxi	S	1/4	25		1/4								3	1	1				3								34:43
11	QUIST Laetitia	S	2/5	40	1/3	0/1								2			1			1	1							42:43
12	WALDENMAIER Laura																											
14	VON PEREIRA Aimée	S	3/5	60	0/2					3/3						1		1				1						18:02
15	AGWUNEDU Ndidi		0/2	0	0/1	0/1								1														30:00
17	WULF Mariel		0/3	0	0/3											2												4:21
18	NEUBRANDER Lea	S	1/1	100												3		1		1								27:57
19	GOLLA Paulina		1/2	50	0/1	1/1								3			4	1	1	1								37:09
24	MICHALCZIK Marie		1/1	100										2				1										21:54
66	BLECKMANN Dana		1/1	100													2		1				1					11:57
	Team / bench																									1		
	UKUPNO		24/41	59	2/12	8/13	2/4	3/3	5/5	3/3	1/1		16	3	2	15	2	4	5	3	2	0	0					

#	Surname and name	Saves / shots								
		Tot.	%	9m	6m	Wing	7m	FB	Brk.	LD
1	ZENNER Charley	13/33	39	7/9	2/5	1/4	0/5	1/5	2/5	
12	WALDENMAIER Laura									
	TOTAL	13/33	39	7/9	2/5	1/4	0/5	1/5	2/5	0/0

Coach: Maik Nowak

Number of attacks: 55, Efficiency: 44%, Average Duration: 27,0 seconds

### Attack by type of defense

	Shots	9m	6m	Wing	TF	E7	E2
On def. 6-0	7/16	1/6	4/7	1/2	7	3	2
On def. 5-1	3/7	0/2	2/3	0/1	3	0	0
On def. 4-2	4/7	1/3	1/2	1/1	4	0	0
On def. press.	1/2	0/1	1/1	0/0	1	0	0
Fastbreak	5/5				0	0	0

### Attack with goalkeeper out

	Attack				Reaction		
	Att.	Eff.	Shots	TF	FB	LD	Tot.
GK in	55	44%	24/41	15	4/5	0/0	4/5

GK out attack is counted if one part or whole attack was GK out

### Attack with player superiority/minority

	Attack				Reaction		
	Att.	Eff.	Shots	TF	FB	LD	Tot.
Superiority +1	5	80%	4/4	1	0/0	0/0	0/0
Normal	37	38%	14/26	11	3/4	0/0	3/4
Minority -1	5	40%	2/4	1	1/1	0/0	1/1

Player superiority counted at the end of attack (in case it changes during attack)

### Defense by type

	Total	9m	6m	Wing	Stl.	C7	2m
Def. 6-0	11/38	2/20	3/6	3/6	1	4	2
Def. 5-1	0/0	0/0	0/0	0/0	1	0	0
Fastbreak	4/5				0	0	0

### Defense with opponent goalkeeper out

	Attack				Reaction		
	Att.	Eff.	Shots	TF	FB	LD	Tot.
GK in	51	33%	17/45	8	5/5	0/0	5/5

### Defense with player superiority/minority

	Attack				Reaction		
	Att.	Eff.	Shots	TF	FB	LD	Tot.
Minority -1	7	43%	3/6	1	0/0	0/0	0/0
Normal	35	31%	11/31	7	4/4	1/1	5/5
Superiority +1	6	33%	2/4	1	0/0	0/0	0/0

# Jersey number Tot. Total shooting 6m 6m (line) shooting 9m 9m shooting Wng. Wing shooting FB Fastbreak sh. 7m 7m penalty sh.  
 Brk. Breakthrough sh. LD Long distance sh. As. Assists E7 Earned 7m pen. TF Technical Faults St. Steals 2m 2m punishments  
 C7. Committed 7m E2 Earned 2m pun. YC. Yellow cards RC Red cards BC Blue cards Blk. Blocks S Starting Line-up



# IHF Women's Youth (U18) World Championship

Poland (Kielce)

Placement Match 5-8



Match Team Statistics

Match No. 85

**Spain 20 - 24 Germany**

(9 - 11) (11 - 13)

18.8.2018. 12:30

Attendance: 200

Hall Legionow

Referees: Raymel Reyes (CUB) / Alexys Zuniga (CUB)

## Shot distribution by player

**2 P. Uhlmann**

1/1		1/1
	1/1	

**3 L. Hausherr**


**6 L. Kockel**

	0/1	
1/1		

**7 J. Weise**

2/2		
1/1		4/4

2 post

**9 T. Andreas**

		1/1
		2/2

**10 M. Mühler**

1/1		0/1

1 post 0/1 lob

**11 L. Quist**

		1/1
0/1		1/1

1 miss. 1 block

**14 A. Von Pereira**

1/1	2/2	

1 post 1 miss.

**15 N. Agwunedu**

		0/1
		0/1

**17 M. Wulf**

0/1		0/1

1 post

**18 L. Neubrander**

		1/1

**19 P. Golla**

	0/1	1/1

**24 M. Michalczyk**

	1/1	

**66 D. Bleckmann**

		1/1

## TOTAL

2/2		3/3
3/4	1/3	10/12
1/2	2/2	2/4

5 post 2 miss. 1 block 0/1 lob

## Saves distribution goalkeepers

**1 C. Zenner**

2/3	0/1	0/1
1/4	1/1	5/10
0/4	3/5	1/2

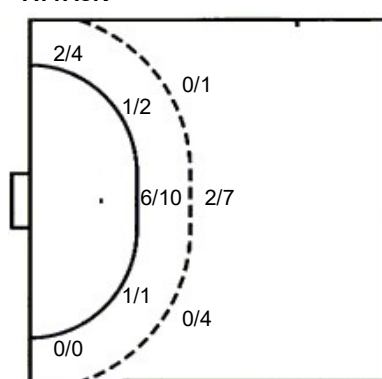
**12 L. Waldenmaier**


## TOTAL

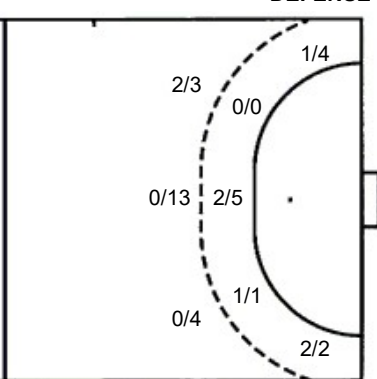
2/3	0/1	0/1
1/4	1/1	5/10
0/4	3/5	1/2

## Shots by position

### ATTACK



### DEFENSE



7m penalties 3/3  
Fastbreak 5/5  
Breakthrough 3/3  
Long dist. 1/1

7m penalties 5/5  
Fastbreak 4/5  
Breakthrough 3/6  
Long dist. 0/0

## Shooting statistics

Position	Goals	Sav.	Miss.	Post	Blk.	Total	%
Back (9m)	2	5	2	2	1	12	17
Line (6m)	8	4	0	1	0	13	62
Wing	2	0	0	2	0	4	50
7m penalties	3	0	0	0	0	3	100
Fastbreak	5	0	0	0	0	5	100
Breakthrough	3	0	0	0	0	3	100
<b>Total</b>	<b>23</b>	<b>9</b>	<b>2</b>	<b>5</b>	<b>1</b>	<b>40</b>	<b>58</b>

# Jersey number Tot. Total shooting 6m 6m (line) shooting 9m 9m shooting Wng. Wing shooting FB Fastbreak sh. 7m 7m penalty sh.  
Brk. Breakthrough sh. LD Long distance sh. As. Assists E7 Earned 7m pen. TF Technical Faults St. Steals 2m 2m punishments  
C7. Committed 7m E2 Earned 2m pun. YC. Yellow cards RC Red cards BC Blue cards Blk. Blocks S Starting Line-up