



IHF Women's Youth (U18) World Championship

Poland (Kielce)

Placement Match 13-14



Match Team Statistics

Match No. 80

Poland 22 - 19 Japan

(12 - 10) (10 - 9)

16.8.2018. 16:15

Attendance: 500

Hall Legionow

Referees: Georgi Doychinov (BUL) / Yulian Goretsov (BUL)

Poland

#	Surname and name	S	Goals / shots									Attack				Def.			Penalties			TP		
			Tot.	%	9m	6m	Wing	7m	FB	Brk.	LD	As.	E7	E2	TF	St.	C7	Blk	YC	2m	RC		BC	
1	WDOWIAK Paulina																							20:49
4	CYGAN Katarzyna	S	1/3	33	1/2						0/1		1			2		1			2			48:52
5	STANISLAWCZYK Kinga	S	0/4	0	0/1						0/3		2			5	1	2			1			46:25
7	SOBECKA Lucyna	S	10/15	67	5/10	1/1				1/1	3/3		1			1	1							60:00
8	WIĘCKOWSKA Magda		4/9	44	4/9								1			4								25:36
9	STAPUREWICZ Paulina																							
10	ZAGRAJEK Julia																							
11	HARIC Gabriela																							
12	CHODAKOWSKA Marta	S																						20:44
13	SZCZEPANIK Nikola																							
14	DWORNICZUK Julia		0/1	0	0/1																			11:10
15	BURY Nadia																							
16	ZIMA Barbara		0/2	0										0/2										18:27
20	BOROWSKA Dominika	S	6/8	75		5/7										1	1				1	1		54:20
23	PIETRAS Julia	S														3		1				1		53:37
24	KOWALIK Emilia	S	1/2	50		1/1	0/1						1				1	2				1		60:00
	Team / bench																							
	UKUPNO		22/44	50	10/23	7/9	0/1	0/0	1/1	3/7	1/3		6	0	0	16	4	6	0	1	6	0	0	

#	Surname and name	Saves / shots								
		Tot.	%	9m	6m	Wing	7m	FB	Brk.	LD
1	WDOWIAK Paulina	3/8	38	1/2	0/1	1/1	0/2	1/2		
12	CHODAKOWSKA Marta	2/9	22	1/3		1/2	0/2	0/1	0/1	
16	ZIMA Barbara	5/12	42	2/3	1/1	1/2	0/4	1/1	0/1	
	TOTAL	10/29	34	4/8	1/2	3/5	0/8	2/4	0/2	0/0

Coach: Agnieszka Truszyńska

Number of attacks: 56, Efficiency: 39%, Average Duration: 33,2 seconds

Attack by type of defense

	Shots	9m	6m	Wing	TF	E7	E2
On def. 6-0	8/18	5/10	1/2	0/1	8	0	0
On def. 3-3	12/22	5/13	6/7	0/0	8	0	0
Fastbreak	1/1				0	0	0

Defense by type

	Total	9m	6m	Wing	Stl.	C7	2m
Def. 6-0	8/29	3/13	1/2	2/12	2	6	5
Def. 5-1	0/0	0/0	0/0	0/0	0	0	1
Def. 3-3	1/2	1/2	0/0	0/0	2	0	0
Fastbreak	2/4				0	0	0

Attack with goalkeeper out

	Attack				Reaction		
	Att.	Eff.	Shots	TF	FB	LD	Tot.
GK in	56	38%	21/42	16	2/4	0/0	2/4

GK out attack is counted if one part or whole attack was GK out

Defense with opponent goalkeeper out

	Attack				Reaction		
	Att.	Eff.	Shots	TF	FB	LD	Tot.
GK in	47	38%	18/40	14	1/1	1/2	2/3

Attack with player superiority/minority

	Attack				Reaction		
	Att.	Eff.	Shots	TF	FB	LD	Tot.
Normal	38	34%	13/30	12	2/3	0/0	2/3
Minority -1	10	50%	5/7	2	0/1	0/0	0/1
Minority -3	1	0%	0/1	0	0/0	0/0	0/0

Player superiority counted at the end of attack (in case it changes during attack)

Defense with player superiority/minority

	Attack				Reaction		
	Att.	Eff.	Shots	TF	FB	LD	Tot.
Minority -3	1	100%	1/1	0	0/0	0/0	0/0
Minority -2	1	0%	0/1	0	0/0	0/0	0/0
Minority -1	9	44%	4/7	3	0/0	0/0	0/0
Normal	38	29%	11/28	13	1/1	1/3	2/4

Jersey number Tot. Total shooting 6m 6m (line) shooting 9m 9m shooting Wng Wing shooting FB Fastbreak sh. 7m 7m penalty sh.
 Brk. Breakthrough sh. LD Long distance sh. As. Assists E7 Earned 7m pen. TF Technical Faults St. Steals 2m 2m punishments
 C7. Committed 7m E2 Earned 2m pun. YC. Yellow cards RC Red cards BC Blue cards Blk. Blocks S Starting Line-up



IHF Women's Youth (U18) World Championship

Poland (Kielce)

Placement Match 13-14



Match Team Statistics

Match No. 80

Poland 22 - 19 Japan

(12 - 10) (10 - 9)

16.8.2018. 16:15

Attendance: 500

Hall Legionow

Referees: Georgi Doychinov (BUL) / Yulian Goretsov (BUL)

Shot distribution by player

4 K. Cygan

1/1		
		0/1

1 miss.

5 K. Stanisławczyk

1 post 3 miss.

7 L. Sobeczka

3/3	1/1	1/1
	1/1	1/1
2/2		1/1

4 post 1 miss.

8 M. Więckowska

0/1		
4/4		0/1

1 post 2 miss.

9 P. Stapurewicz

10 J. Zagrajek

11 G. Haric

13 N. Szczepanik

14 J. Dworniczuk

1 miss.

15 N. Bury

20 D. Borowska

1/1		
1/1	1/1	1/1
	0/1	1/1

1 miss. 1/1 lob

23 J. Pietras

24 E. Kowalik

1/1		

1 miss.

TOTAL

5/5	1/1	1/1
1/2	2/2	2/3
7/7	0/1	2/3

6 post 10 miss. 1/1 lob

Saves distribution goalkeepers

1 P. Wdowiak

2/3		
1/1		0/3

12 M. Chodakowska

0/1		
1/2		
1/4	0/2	

16 B. Zima

1/1	1/1	
	1/1	1/2
0/2	1/1	0/4

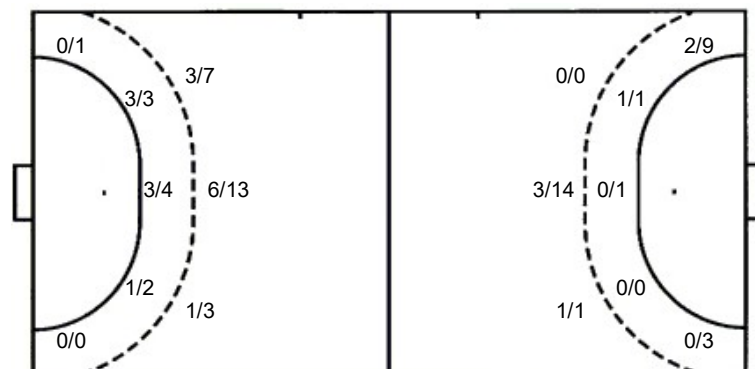
TOTAL

1/2	1/1	
3/5	1/1	1/2
2/7	1/3	0/7

Shots by position

ATTACK

DEFENSE



Shooting statistics

Position	Goals	Sav.	Miss.	Post	Blk.	Total	%
Back (9m)	10	3	5	5	0	23	43
Line (6m)	7	1	1	0	0	9	78
Wing	0	0	1	0	0	1	0
7m penalties	0	0	0	0	0	0	0
Fastbreak	1	0	0	0	0	1	100
Breakthrough	3	0	3	1	0	7	43
Total	21	4	10	6	0	41	51

7m penalties 0/0

Fastbreak 1/1

Breakthrough 3/7

Long dist. 1/3

7m penalties 8/8

Fastbreak 2/4

Breakthrough 2/2

Long dist. 0/0

Jersey number Tot. Total shooting 6m 6m (line) shooting 9m 9m shooting Wng. Wing shooting FB Fastbreak sh. 7m 7m penalty sh.
 Brk. Breakthrough sh. LD Long distance sh. As. Assists E7 Earned 7m pen. TF Technical Faults St. Steals 2m 2m punishments
 C7. Committed 7m E2 Earned 2m pun. YC. Yellow cards RC Red cards BC Blue cards Blk. Blocks S Starting Line-up



IHF Women's Youth (U18) World Championship

Poland (Kielce)

Placement Match 13-14



Match Team Statistics

Match No. 80

Poland 22 - 19 Japan

(12 - 10) (10 - 9)

16.8.2018. 16:15

Attendance: 500

Hall Legionow

Referees: Georgi Doychinov (BUL) / Yulian Goretsov (BUL)

Japan

#	Surname and name	S	Goals / shots									Attack				Def.			Penalties				TP							
			Tot.	%	9m	6m	Wing	7m	FB	Brk.	LD	As.	E7	E2	TF	St.	C7	Blk	YC	2m	RC	BC								
1	CHIBA Natsuki																													
2	HASHIGUCHI Wakana																													
4	TSUJINO Momoka																													
5	ABE Miyuki	S	6/10	60	1/3	1/1	0/1	2/2	1/2	1/1					3	1	4						1						59:16	
6	ITO Airi	S	5/11	45	2/8			3/3							1		1												31:01	
7	HATTORI Sayaka																1	1											16:10	
9	YASUDA Tsugumi																												1:54	
10	OKADA Ayame	S	6/8	75	1/2		0/1	3/3	1/1	1/1				1			3	2											58:50	
12	SAKAKI Mana	S																											52:57	
14	HIRANO Shuka	S	0/2	0			0/2								1		2												58:06	
15	TANIFUJI Haruka	S	2/9	22			2/8			0/1							1	1											60:00	
17	KUREBAYASHI Shino		0/1	0	0/1												3												8:28	
18	EMOTO Hikaru																													
19	UJIMURA Yui																													
20	MORIYA Aoi																												13:18	
21	UEDA Haruka	S	0/2	0	0/1	0/1									1	5	3	1					1						60:00	
	Team / bench																													
	UKUPNO		19/43	44	4/15	1/2	2/12	8/8	2/4	2/2	0/0			1	6	6	18	5	0	0	2	0	0	0						

#	Surname and name	Saves / shots								
		Tot.	%	9m	6m	Wing	7m	FB	Brk.	LD
1	CHIBA Natsuki									
12	SAKAKI Mana	4/25	16	3/13	1/8			0/1	0/3	
	TOTAL	4/25	16	3/13	1/8	0/0	0/0	2/1	0/3	0/0

Coach: Jun Tanaka

Number of attacks: 56, Efficiency: 34%, Average Duration: 31,1 seconds

Attack by type of defense

	Shots	9m	6m	Wing	TF	E7	E2
On def. 6-0	8/29	3/13	1/2	2/12	17	6	5
On def. 5-1	0/0	0/0	0/0	0/0	0	0	1
On def. 3-3	1/2	1/2	0/0	0/0	1	0	0
Fastbreak	2/4				0	0	0

Defense by type

	Total	9m	6m	Wing	Stl.	C7	2m
Def. 6-0	8/18	5/10	1/2	0/1	4	0	0
Def. 3-3	12/22	5/13	6/7	0/0	1	0	0
Fastbreak	1/1				0	0	0

Attack with goalkeeper out

	Attack				Reaction		
	Att.	Eff.	Shots	TF	FB	LD	Tot.
GK out (7 on 6)	9	11%	1/3	4	0/0	0/1	0/1
GK in	47	38%	18/40	14	1/1	1/2	2/3

GK out attack is counted if one part or whole attack was GK out

Attack with player superiority/minority

	Attack				Reaction		
	Att.	Eff.	Shots	TF	FB	LD	Tot.
Superiority +3	1	100%	1/1	0	0/0	0/0	0/0
Superiority +2	1	0%	0/1	0	0/0	0/0	0/0
Superiority +1	9	44%	4/7	3	0/0	0/0	0/0
Normal	38	29%	11/28	13	1/1	1/3	2/4

Player superiority counted at the end of attack (in case it changes during attack)

Defense with opponent goalkeeper out

	Attack				Reaction		
	Att.	Eff.	Shots	TF	FB	LD	Tot.
GK out (7 on 6)	0	0%	1/2	0	0/0	0/0	0/0
GK in	56	38%	21/42	16	2/4	0/0	2/4

Defense with player superiority/minority

	Attack				Reaction		
	Att.	Eff.	Shots	TF	FB	LD	Tot.
Normal	38	34%	13/30	12	2/3	0/0	2/3
Superiority +1	10	50%	5/7	2	0/1	0/0	0/1
Superiority +3	1	0%	0/1	0	0/0	0/0	0/0

Jersey number Tot. Total shooting 6m 6m (line) shooting 9m 9m shooting Wng. Wing shooting FB Fastbreak sh. 7m 7m penalty sh.
 Brk. Breakthrough sh. LD Long distance sh. As. Assists E7 Earned 7m pen. TF Technical Faults St. Steals 2m 2m punishments
 C7. Committed 7m E2 Earned 2m pun. YC. Yellow cards RC Red cards BC Blue cards Blk. Blocks S Starting Line-up



IHF Women's Youth (U18) World Championship

Poland (Kielce)

Placement Match 13-14



Match Team Statistics

Match No. 80

Poland 22 - 19 Japan

(12 - 10) (10 - 9)

16.8.2018. 16:15

Attendance: 500

Hall Legionow

Referees: Georgi Doychinov (BUL) / Yulian Goretsov (BUL)

Shot distribution by player

2 W. Hashiguchi

4 M. Tsujino

5 M. Abe

1/2		
1/2		
1/1	1/1	2/2

2 post

6 A. Ito

2/4	1/1	2/2

4 miss.

7 S. Hattori

9 T. Yasuda

10 A. Okada

1/2		1/1
1/1		2/2

1 miss. 1/1 lob

14 S. Hirano

1 post 1 miss.

15 H. Tanifuji

	0/1	
0/1		
1/1	0/1	1/1

4 post

17 S. Kurebayashi

		0/1

18 H. Emoto

19 Y. Ujimura

20 A. Moriya

21 H. Ueda

	0/1	

1 miss.

TOTAL

1/2	0/1	
2/5	0/1	1/2
5/7	2/3	7/7

7 post 7 miss. 1/1 lob

Saves distribution goalkeepers

1 N. Chiba

12 M. Sakaki

0/5	0/1	0/1
1/2	0/2	1/3
0/7	1/1	1/3

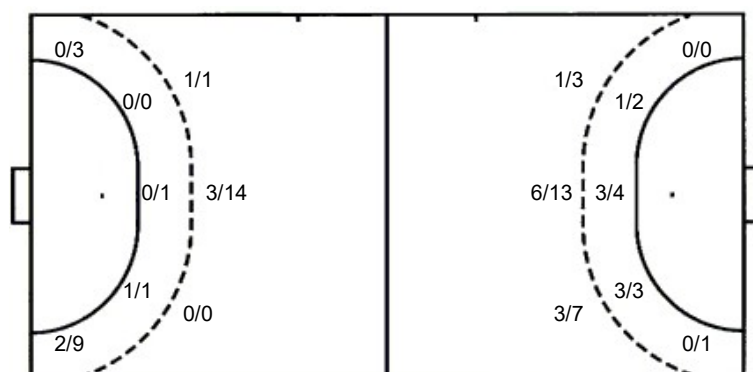
TOTAL

0/5	0/1	0/1
1/2	0/2	1/3
0/7	1/1	1/3

Shots by position

ATTACK

DEFENSE



7m penalties 8/8

Fastbreak 2/4

Breakthrough 2/2

Long dist. 0/0

7m penalties 0/0

Fastbreak 1/1

Breakthrough 3/7

Long dist. 1/3

Shooting statistics

Position	Goals	Sav.	Miss.	Post	Bik.	Total	%
Back (9m)	4	4	6	1	0	15	27
Line (6m)	1	1	0	0	0	2	50
Wing	2	3	1	6	0	12	17
7m penalties	8	0	0	0	0	8	100
Fastbreak	2	2	0	0	0	4	50
Breakthrough	2	0	0	0	0	2	100
Total	19	10	7	7	0	43	44

Jersey number Tot. Total shooting 6m 6m (line) shooting 9m 9m shooting Wng. Wing shooting FB Fastbreak sh. 7m 7m penalty sh.
 Brk. Breakthrough sh. LD Long distance sh. As. Assists E7 Earned 7m pen. TF Technical Faults St. Steals 2m 2m punishments
 C7. Committed 7m E2 Earned 2m pun. YC. Yellow cards RC Red cards BC Blue cards Blk. Blocks S Starting Line-up