



# IHF Women's Youth (U18) World Championship

Poland (Kielce)

Placement Match 11-12



Match Team Statistics

Match No. 77

## Norway 27 - 20 Croatia

(13 - 8) (14 - 12)

16.8.2018. 14:00

Attendance: 110

Hall Legionow

Referees: Tomoko Ota (JPN) / Mariko Shimajiri (JPN)

### Norway

#	Surname and name	S	Goals / shots									Attack				Def.			Penalties			TP		
			Tot.	%	9m	6m	Wing	7m	FB	Brk.	LD	As.	E7	E2	TF	St.	C7	Blk	YC	2m	RC		BC	
1	SKOGRAND Eli Smorgrav																							0:14
2	OYERHAMN Rikke Larsen	S	4/5	80				2/3			2/2													23:29
4	HOVE Tuva Ulsaker	S	1/3	33				0/1			1/2													31:15
5	KJOLHOLDT Henrikke Hauge		3/7	43				0/3			3/4						1							29:16
6	DEILA Thale Rushfeldt																							3:57
8	SVELE Mia																							
11	DEILA Live Rushfeldt	S	2/2	100	1/1						1/1			2			1	1		1				24:50
12	FINNEIDE Vilde Tornes	S												3			1							59:07
13	EIRIKSSON Kristin Loraas		2/5	40	1/4						1/1						2		1					29:05
14	FIGENSCHAU Marte Siren		0/2	0		0/2									1	1	1	1						29:14
18	MORCH Tiril Solumsmoen	S	2/4	50		2/3					0/1			1			1		1	1	1	2		31:48
22	NOVAK Kristina Sirum		2/5	40	1/4						1/1						2							10:35
26	MOEN Eva Erdal	S	5/8	63	4/6					0/1			1/1	1	1		1	1	2					41:00
28	HANSEN Marie Rokkones	S	4/9	44	4/9									1			1	1						48:31
30	SENDI Lorin		1/2	50	1/2									1				1				1		21:08
77	ARNESEN Rikke		1/4	25		0/2				1/1	0/1						1							36:31
	Team / bench																							
	UKUPNO		27/56	48	12/26	2/5	2/9	1/2	9/12	1/2	0/0			9	2	1	9	4	4	4	1	3	0	0

#	Surname and name	Saves / shots								
		Tot.	%	9m	6m	Wing	7m	FB	Brk.	LD
1	SKOGRAND Eli Smorgrav	1/1	100				1/1			
12	FINNEIDE Vilde Tornes	18/38	47	11/18	1/8	4/6	1/3	0/1	1/2	
	TOTAL	19/39	49	11/18	1/8	4/6	2/4	0/1	1/2	0/0

Coach: Knut Ove Joa

Number of attacks: 53, Efficiency: 51%, Average Duration: 34,8 seconds

### Attack by type of defense

	Shots	9m	6m	Wing	TF	E7	E2
On def. 6-0	12/29	7/18	2/4	2/6	6	2	1
On def. 5-1	5/13	5/8	0/1	0/3	3	0	0
Fastbreak	9/12				0	0	0

### Defense by type

	Total	9m	6m	Wing	Stl.	C7	2m
Def. 6-0	16/43	7/28	6/8	2/5	2	4	3
Def. 5-1	1/6	0/1	1/2	0/3	2	0	0
Fastbreak	1/1				0	0	0

### Attack with goalkeeper out

	Attack				Reaction		
	Att.	Eff.	Shots	TF	FB	LD	Tot.
GK in	53	51%	27/56	9	1/1	0/0	1/1

GK out attack is counted if one part or whole attack was GK out

### Defense with opponent goalkeeper out

	Attack				Reaction		
	Att.	Eff.	Shots	TF	FB	LD	Tot.
GK in	54	37%	20/54	13	9/12	0/0	9/12

### Attack with player superiority/minority

	Attack				Reaction		
	Att.	Eff.	Shots	TF	FB	LD	Tot.
Superiority +1	2	100%	2/3	0	0/0	0/0	0/0
Normal	36	42%	15/34	7	1/1	0/0	1/1
Minority -1	5	80%	4/8	1	0/0	0/0	0/0

Player superiority counted at the end of attack (in case it changes during attack)

### Defense with player superiority/minority

	Attack				Reaction		
	Att.	Eff.	Shots	TF	FB	LD	Tot.
Minority -1	7	29%	2/7	1	1/1	0/0	1/1
Normal	35	46%	16/40	6	6/7	0/0	6/7
Superiority +1	2	0%	0/2	1	1/1	0/0	1/1

# Jersey number Tot. Total shooting 6m 6m (line) shooting 9m 9m shooting Wng. Wing shooting FB Fastbreak sh. 7m 7m penalty sh.  
 Brk. Breakthrough sh. LD Long distance sh. As. Assists E7 Earned 7m pen. TF Technical Faults St. Steals 2m 2m punishments  
 C7. Committed 7m E2 Earned 2m pun. YC. Yellow cards RC Red cards BC Blue cards Blk. Blocks S Starting Line-up



# IHF Women's Youth (U18) World Championship

Poland (Kielce)

Placement Match 11-12



Match Team Statistics

Match No. 77

## Norway 27 - 20 Croatia

(13 - 8) (14 - 12)

16.8.2018. 14:00

Attendance: 110

Hall Legionow

Referees: Tomoko Ota (JPN) / Mariko Shimajiri (JPN)

### Shot distribution by player

2 R. Oyerhamn

1/1		1/1
		1/1
		1/1

1 post

4 T. Hove

		0/1
		1/1

1 post

5 H. Kjolholdt

0/1	0/1	
1/1		0/1
1/1		1/1

1 post

6 T. Deila


8 M. Svele


11 L. Deila

		1/1
		1/1

13 K. Eiriksson

		1/1
	1/1	

1 post 1 miss. 1 block

14 M. Figenschau

		0/1

1 post

18 T. Morch

1/1		1/1

2 post

22 K. Novak

		0/1
1/1		1/1

1 post 1 miss.

26 E. Moen

1/1		1/1
1/1	0/1	
	1/1	1/1

2 miss.

28 M. Hansen

1/1		0/1
1/1		
1/1		1/1

2 miss. 2 block

30 L. Sendi

1/1		

1 miss.

77 R. Arnesen

	0/1	
1/2	0/1	

### TOTAL

3/4	0/2	4/5
3/3	0/1	2/6
6/7	2/3	7/7

8 post 7 miss. 3 block

### Saves distribution goalkeepers

1 E. Skogrand

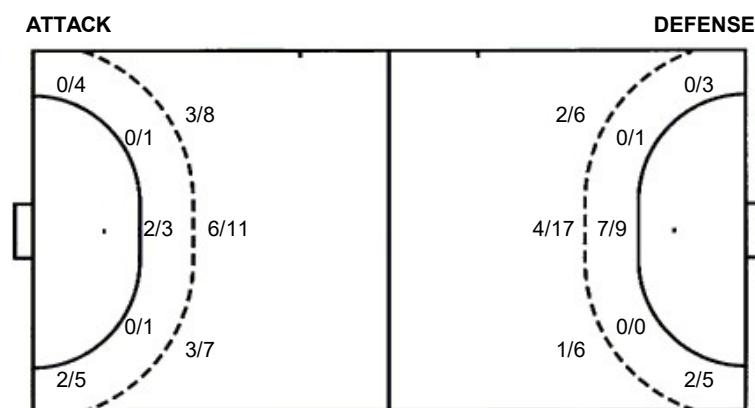

12 V. Finneide

0/5	1/1	0/2
3/5	4/4	3/7
4/6	0/2	3/6

### TOTAL

0/5	1/1	0/2
3/5	4/4	3/7
4/6	0/2	3/6

### Shots by position



7m penalties 1/2  
Fastbreak 9/12  
Breakthrough 1/2  
Long dist. 0/0

7m penalties 2/4  
Fastbreak 1/1  
Breakthrough 1/2  
Long dist. 0/0

### Shooting statistics

Position	Goals	Sav.	Miss.	Post	Bik.	Total	%
Back (9m)	12	2	7	2	3	26	46
Line (6m)	2	1	0	2	0	5	40
Wing	2	4	0	3	0	9	22
7m penalties	1	1	0	0	0	2	50
Fastbreak	9	2	0	1	0	12	75
Breakthrough	1	1	0	0	0	2	50
<b>Total</b>	<b>27</b>	<b>11</b>	<b>7</b>	<b>8</b>	<b>3</b>	<b>56</b>	<b>48</b>

# Jersey number Tot. Total shooting 6m 6m (line) shooting 9m 9m shooting Wng. Wing shooting FB Fastbreak sh. 7m 7m penalty sh.  
Brk. Breakthrough sh. LD Long distance sh. As. Assists E7 Earned 7m pen. TF Technical Faults St. Steals 2m 2m punishments  
C7. Committed 7m E2 Earned 2m pun. YC. Yellow cards RC Red cards BC Blue cards Blk. Blocks S Starting Line-up



# IHF Women's Youth (U18) World Championship

Poland (Kielce)

Placement Match 11-12



Match Team Statistics

Match No. 77

## Norway 27 - 20 Croatia

(13 - 8) (14 - 12)

16.8.2018. 14:00

Attendance: 110

Hall Legionow

Referees: Tomoko Ota (JPN) / Mariko Shimajiri (JPN)

### Croatia

#	Surname and name	S	Goals / shots									Attack				Def.			Penalties			TP							
			Tot.	%	9m	6m	Wing	7m	FB	Brk.	LD	As.	E7	E2	TF	St.	C7	Blk	YC	2m	RC		BC						
4	BARISIĆ Tina	S	3/10	30	2/8									1	1		4		1			1						45:56	
5	MALEC Ana																												
6	IVANDA Lucija																												
7	POPOVIĆ Elena	S	4/4	100	4/4																							21:35	
8	GUSKIĆ Ema	S	3/13	23	1/10	1/1			1/2					4	1		2											55:41	
9	VUČIĆ Ema	S	0/2	0				0/2																				42:00	
10	RUBIĆ Klara																1											4:59	
11	VIDAKOVIĆ Nevena		0/1	0				0/1									3											21:39	
12	MARINOVIĆ Petra	S																										47:49	
14	PETIKA Tena		5/12	42	4/9	0/1			1/2					1	1	2	1					3						49:12	
15	VOJNOVIĆ Nika		2/4	50	0/1	2/3									1	1	1	1										32:45	
16	POKOPAC Karmela																											12:11	
17	KASELJ Josipa	S																										20:33	
18	BARBIR Ema	S	3/7	43	0/1			2/5		1/1								1	1									60:00	
19	MIHOLIĆ Lara																												
20	HUMEL Lucija		0/1	0		0/1											1											5:40	
	Team / bench																												
	UKUPNO		20/54	37	7/29	7/10	2/8	2/4	1/1	1/2	0/0		6	4	3	13	2	2	3	0	1	0	0						

#	Surname and name	Saves / shots								
		Tot.	%	9m	6m	Wing	7m	FB	Brk.	LD
12	MARINOVIĆ Petra	7/28	25	2/12	1/3	2/4	1/2	1/6	0/1	
16	POKOPAC Karmela	4/10	40	0/2		2/2		1/5	1/1	
	TOTAL	11/38	29	2/14	1/3	4/6	1/2	2/11	1/2	0/0

Coach: Goran Bobić

Number of attacks: 54, Efficiency: 37%, Average Duration: 32,5 seconds

#### Attack by type of defense

	Shots	9m	6m	Wing	TF	E7	E2
On def. 6-0	16/43	7/28	6/8	2/5	11	4	3
On def. 5-1	1/6	0/1	1/2	0/3	2	0	0
Fastbreak	1/1				0	0	0

#### Defense by type

	Total	9m	6m	Wing	Stl.	C7	2m
Def. 6-0	12/29	7/18	2/4	2/6	2	2	1
Def. 5-1	5/13	5/8	0/1	0/3	0	0	0
Fastbreak	9/12				0	0	0

#### Attack with goalkeeper out

	Attack				Reaction			
	Att.	Eff.	Shots	TF	FB	LD	Tot.	
GK in	54	37%	20/54	13	9/12	0/0	9/12	

GK out attack is counted if one part or whole attack was GK out

#### Defense with opponent goalkeeper out

	Attack				Reaction			
	Att.	Eff.	Shots	TF	FB	LD	Tot.	
GK in	53	51%	27/56	9	1/1	0/0	1/1	

#### Attack with player superiority/minority

	Attack				Reaction			
	Att.	Eff.	Shots	TF	FB	LD	Tot.	
Superiority +1	7	29%	2/7	1	1/1	0/0	1/1	
Normal	35	46%	16/40	6	6/7	0/0	6/7	
Minority -1	2	0%	0/2	1	1/1	0/0	1/1	

Player superiority counted at the end of attack (in case it changes during attack)

#### Defense with player superiority/minority

	Attack				Reaction			
	Att.	Eff.	Shots	TF	FB	LD	Tot.	
Minority -1	2	100%	2/3	0	0/0	0/0	0/0	
Normal	36	42%	15/34	7	1/1	0/0	1/1	
Superiority +1	5	80%	4/8	1	0/0	0/0	0/0	

# Jersey number Tot. Total shooting 6m 6m (line) shooting 9m 9m shooting Wng. Wing shooting FB Fastbreak sh. 7m 7m penalty sh.  
 Brk. Breakthrough sh. LD Long distance sh. As. Assists E7 Earned 7m pen. TF Technical Faults St. Steals 2m 2m punishments  
 C7. Committed 7m E2 Earned 2m pun. YC. Yellow cards RC Red cards BC Blue cards Blk. Blocks S Starting Line-up



# IHF Women's Youth (U18) World Championship

Poland (Kielce)

Placement Match 11-12



Match Team Statistics

Match No. 77

**Norway 27 - 20 Croatia**

(13 - 8) (14 - 12)

16.8.2018. 14:00

Attendance: 110

Hall Legionow

Referees: Tomoko Ota (JPN) / Mariko Shimajiri (JPN)

## Shot distribution by player

**4 T. Barišić**

	0/1	1/1
0/1		0/1
1/2		1/2

2 block

**5 A. Malec**


**6 L. Ivanda**


**7 E. Popović**

1/1		
1/1		
	2/2	

**8 E. Guskić**

1/1		
	0/3	2/3

1 post 4 miss. 1 block

**9 E. Vučić**

0/1		
0/1		

**10 K. Rubić**


**11 N. Vidaković**

0/1		

**14 T. Petika**

1/1		1/1
		1/1
1/3		1/2

2 post 1 miss. 0/1 lob

**15 N. Vojnović**

		1/1
		1/1

1 miss. 1 block

**17 J. Kaselj**


**18 E. Barbir**

2/2		
1/1	0/1	0/1

2 post

**19 L. Miholić**


**20 L. Humel**

		0/1

## TOTAL

5/5	0/1	2/2
2/5	0/4	4/7
2/6	2/2	3/6

5 post 6 miss. 4 block 0/1 lob

## Saves distribution goalkeepers

**12 P. Marinović**

0/1	2/2	1/5
0/2	1/1	3/5
0/5	0/1	0/6

**16 K. Pokopac**

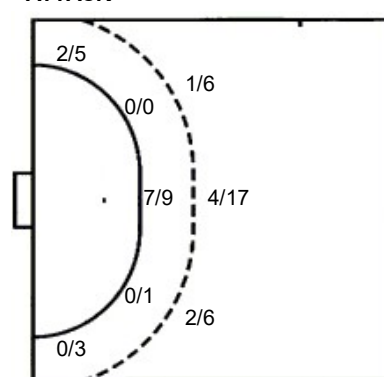
1/3		
0/1		1/1
1/2	1/2	0/1

## TOTAL

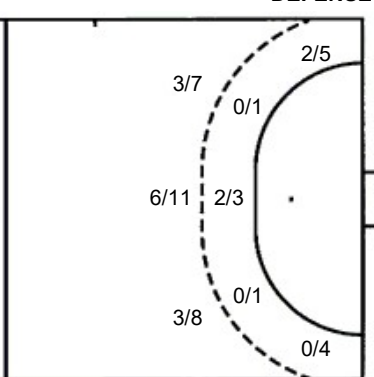
1/4	2/2	1/5
0/3	1/1	4/6
1/7	1/3	0/7

## Shots by position

### ATTACK



### DEFENSE



7m penalties 2/4

Fastbreak 1/1

Breakthrough 1/2

Long dist. 0/0

7m penalties 1/2

Fastbreak 9/12

Breakthrough 1/2

Long dist. 0/0

## Shooting statistics

Position	Goals	Sav.	Miss.	Post	Blk.	Total	%
Back (9m)	7	11	5	2	4	29	24
Line (6m)	7	1	1	1	0	10	70
Wing	2	4	0	2	0	8	25
7m penalties	2	2	0	0	0	4	50
Fastbreak	1	0	0	0	0	1	100
Breakthrough	1	1	0	0	0	2	50
<b>Total</b>	<b>20</b>	<b>19</b>	<b>6</b>	<b>5</b>	<b>4</b>	<b>54</b>	<b>37</b>

# Jersey number Tot. Total shooting 6m 6m (line) shooting 9m 9m shooting Wng. Wing shooting FB Fastbreak sh. 7m 7m penalty sh.  
 Brk. Breakthrough sh. LD Long distance sh. As. Assists E7 Earned 7m pen. TF Technical Faults St. Steals 2m 2m punishment sh.  
 C7. Committed 7m E2 Earned 2m pun. YC. Yellow cards RC Red cards BC Blue cards Blk. Blocks S Starting Line-up