



IHF Women's Youth (U18) World Championship

Poland (Kielce)

Placement Match 21-22



Match Team Statistics

Match No. 76

Angola 22 - 18 P.R. of China

(13 - 7) (9 - 11)

16.8.2018. 11:45

Attendance: 50

Hall Politechnika

Referees: Bartosz Leszczynski (POL) / Marcin Piechota (POL)

Angola

#	Surname and name	S	Goals / shots								Attack				Def.			Penalties			TP				
			Tot.	%	9m	6m	Wing	7m	FB	Brk.	LD	As.	E7	E2	TF	St.	C7	Bk	YC	2m		RC	BC		
1	FREDERICO Paula Francisco																						15:13		
3	SUCACUEXE Catarina Paulo S		0/2	0				0/2															23:37		
5	ESTEVEES Edna Kiala		0/1	0	0/1																	1	6:24		
6	KIALA Luzia Santana	S	8/12	67	3/6			1/1	2/2					2/3								2	1	50:54	
7	MONTEIRO Jelsia Marlia Miguel	S	1/3	33				1/3															1	37:43	
10	MASSEU Beatriz Diana	S	5/9	56	1/5					1/1	3/3				1	1	2	4	2					50:26	
11	CASTRO Thayany Cacaica B																								
12	DA SILVA Paulina Bazolau	S																						42:20	
13	TCHITONGUA Isabel Marcelino		4/5	80	3/3					1/2					2			3	2					21:03	
14	COIO Ana Jandira A	S	2/2	100		2/2													1	1	1			38:53	
18	GABRIEL Chelsia Cristina	S	2/2	100	1/1						1/1				2			3						33:11	
19	SEBASTIAO Zuraida Agnela M.																					1	1	23:14	
20	FERREIRA Lúgia Alexandra J																							0:13	
26	ROSARIO Dolores Palmira L.	S	0/1	0				0/1														1		40:17	
29	MATEUS Rossana Sebastiao		0/1	0	0/1														2		1	4		36:32	
	Team / bench																								
	UKUPNO		22/38	58	8/17	2/2	2/7	2/2	2/3	6/7	0/0				6	2	4	16	4	3	8	2	3	0	0

#	Surname and name	Saves / shots									
		Tot.	%	9m	6m	Wing	7m	FB	Brk.	LD	
1	FREDERICO Paula Francisco	2/6	33	0/3		2/2			0/1		
12	DA SILVA Paulina Bazolau	7/20	35	2/3	0/2	5/11	0/2	0/2			
20	FERREIRA Lúgia Alexandra J	0/1	0			0/1					
	TOTAL	9/27	33	2/6	0/2	7/13	0/3	0/2	0/1	0/0	

Coach:

Number of attacks: 51, Efficiency: 43%, Average Duration: 34,6 seconds

Attack by type of defense

	Shots	9m	6m	Wing	TF	E7	E2
On def. 6-0	3/8	2/4	0/0	1/4	9	0	1
On def. 5-1	14/24	5/12	2/2	1/3	6	2	3
On def. 4-2	1/1	1/1	0/0	0/0	1	0	0
Fastbreak	2/3				0	0	0

Defense by type

	Total	9m	6m	Wing	Stl.	C7	2m
Def. 6-0	13/33	4/16	2/2	6/13	3	3	2
Def. 5-1	0/2	0/1	0/0	0/1	1	0	1
Fastbreak	2/2				0	0	0

Attack with goalkeeper out

	Attack				Reaction		
	Att.	Eff.	Shots	TF	FB	LD	Tot.
GK in	51	43%	22/38	16	2/2	0/0	2/2

GK out attack is counted if one part or whole attack was GK out

Attack with player superiority/minority

	Attack				Reaction		
	Att.	Eff.	Shots	TF	FB	LD	Tot.
Superiority +1	8	38%	3/7	2	0/0	0/0	0/0
Normal	26	31%	8/16	11	1/1	0/0	1/1
Minority -1	5	60%	3/4	1	0/0	0/0	0/0

Player superiority counted at the end of attack (in case it changes during attack)

Defense with opponent goalkeeper out

	Attack				Reaction		
	Att.	Eff.	Shots	TF	FB	LD	Tot.
GK in	51	35%	18/40	15	2/3	0/0	2/3

Defense with player superiority/minority

	Attack				Reaction		
	Att.	Eff.	Shots	TF	FB	LD	Tot.
Minority -1	5	20%	1/3	2	0/0	0/0	0/0
Normal	27	37%	10/18	9	2/3	0/0	2/3
Superiority +1	8	38%	3/7	2	0/0	0/0	0/0

Jersey number
Brk. Breakthrough sh.
C7. Committed 7m
Tot. Total shooting
LD Long distance sh.
E2 Earned 2m pun.
6m 6m (line) shooting
As. Assists
YC. Yellow cards
9m 9m shooting
E7 Earned 7m pen.
RC Red cards
Wng. Wing shooting
TF Technical Faults
BC Blue cards
FB Fastbreak sh.
St. Steals
Blk. Blocks
7m 7m penalty sh.
2m 2m punishments
S Starting Line-up



IHF Women's Youth (U18) World Championship

Poland (Kielce)

Placement Match 21-22



Match Team Statistics

Match No. 76

Angola 22 - 18 P.R. of China

(13 - 7) (9 - 11)

16.8.2018. 11:45

Attendance: 50

Hall Politechnika

Referees: Bartosz Leszczynski (POL) / Marcin Piechota (POL)

Shot distribution by player

3 C. Sucacuexe

		0/1
0/1		

5 E. Esteves

1 miss.

6 L. Kiala

1/1		1/1
3/4		1/1
1/2	1/1	

2 post

7 J. Monteiro

0/1		1/1
	0/1	

10 B. Masseu

2/3		2/3
		1/1

2 miss.

11 T. Castro

13 I. Tchitongua

1/1		
2/2		
1/1		

1 miss.

14 A. Coio

		2/2

18 C. Gabriel

2/2		

19 Z. Sebastiao

26 D. Rosario

	0/1	

29 R. Mateus

		0/1

TOTAL

2/2	0/1	1/2
7/10		6/8
4/6	1/2	1/1

2 post 4 miss.

Saves distribution goalkeepers

1 P. Frederico

0/1	1/1	0/1
		1/1
0/1	0/1	

12 P. Da Silva

		1/1
1/3		2/5
1/5	0/1	1/4

20 L. Ferreira

0/1		

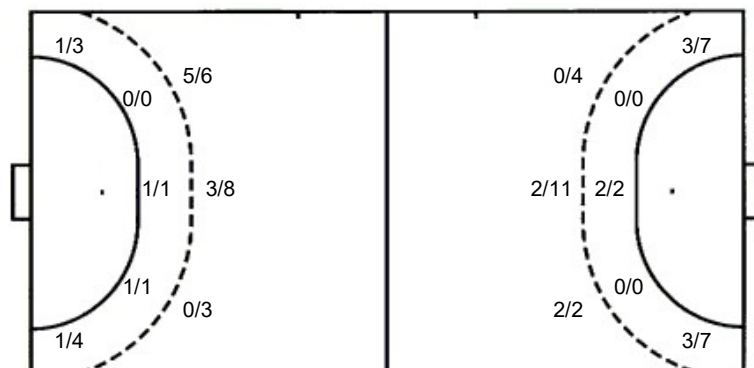
TOTAL

0/1	1/1	1/2
1/3		3/6
1/7	0/2	1/4

Shots by position

ATTACK

DEFENSE



7m penalties 2/2
Fastbreak 2/3
Breakthrough 6/7
Long dist. 0/0

7m penalties 3/3
Fastbreak 2/2
Breakthrough 1/2
Long dist. 0/0

Shooting statistics

Position	Goals	Sav.	Miss.	Post	Blk.	Total	%
Back (9m)	8	4	3	2	0	17	47
Line (6m)	2	0	0	0	0	2	100
Wing	2	5	0	0	0	7	29
7m penalties	2	0	0	0	0	2	100
Fastbreak	2	0	1	0	0	3	67
Breakthrough	6	1	0	0	0	7	86
Total	22	10	4	2	0	38	58

Jersey number
Brk. Breakthrough sh.
C7. Committed 7m
Tot. Total shooting
LD Long distance sh.
E2 Earned 2m pun.
6m 6m (line) shooting
As. Assists
Yc. Yellow cards
9m 9m shooting
E7 Earned 7m pen.
RC Red cards
Wng. Wing shooting
TF Technical Faults
BC Blue cards
FB Fastbreak sh.
St. Steals
Blk. Blocks
7m 7m penalty sh.
2m 2m punishments
S Starting Line-up



IHF Women's Youth (U18) World Championship

Poland (Kielce)

Placement Match 21-22



Match Team Statistics

Match No. 76

Angola 22 - 18 P.R. of China

(13 - 7) (9 - 11)

16.8.2018. 11:45

Attendance: 50

Hall Politechnika

Referees: Bartosz Leszczynski (POL) / Marcin Piechota (POL)

P.R. of China

Igraei		Goals / shots									Attack				Def.			Penalties			TP			
#	Surname and name	S	Tot.	%	9m	6m	Wing	7m	FB	Brk.	LD	As.	E7	E2	TF	St.	C7	Bk	YC	2m		RC	BC	
2	HUANG Haiyu	S	1/3	33			1/3								2									45:46
3	LIU Shitong		0/1	0			0/1																	16:10
5	ZHU Jiaying																							
6	CHEN Shuo	S	3/7	43	2/4	1/1	0/1			0/1		2	2	1	3	1					2			60:00
7	TANG Yue	S	3/7	43	0/1		3/6								1	1	1			1				51:56
9	LIAN Suqi		0/1	0			0/1								1									14:14
11	ZHU Haiyu	S	5/7	71	1/3		2/2		1/1	1/1				1	4		1		1	1				60:00
12	SONG Chenxi	S																						60:00
13	ZHOU Mengxue	S	5/13	38	1/9			3/3	1/1			3	1		3						1			51:59
15	WANG Hui																							
16	ZOU Tongyu																							
17	SUN Mingyue												1		1									32:01
18	SUN Miaomiao																							
19	LI Yuanmeng																							
20	DOU Haiyue																							
22	DONG Xue	S	1/1	100		1/1																		27:54
	Team / bench																							
	UKUPNO		18/40	45	4/17	2/2	6/14	3/3	2/2	1/2	0/0	6	3	3	15	2	2	0	2	4	0	0		

Goalkeepers		Saves / shots								
#	Surname and name	Tot.	%	9m	6m	Wing	7m	FB	Brk.	LD
12	SONG Chenxi	10/32	31	4/12	0/2	5/7	0/2	0/2	1/7	
16	ZOU Tongyu									
	TOTAL	10/32	31	4/12	0/2	5/7	0/2	0/2	1/7	0/0

Coach: Bin Zhang

Number of attacks: 51, Efficiency: 35%, Average Duration: 36,0 seconds

Attack by type of defense

	Shots	9m	6m	Wing	TF	E7	E2
On def. 6-0	13/33	4/16	2/2	6/13	15	3	2
On def. 5-1	0/2	0/1	0/0	0/1	0	0	1
Fastbreak	2/2				0	0	0

Defense by type

	Total	9m	6m	Wing	Stl.	C7	2m
Def. 6-0	3/8	2/4	0/0	1/4	2	0	1
Def. 5-1	14/24	5/12	2/2	1/3	0	2	3
Def. 4-2	1/1	1/1	0/0	0/0	0	0	0
Fastbreak	2/3				0	0	0

Attack with goalkeeper out

	Attack				Reaction		
	Att.	Eff.	Shots	TF	FB	LD	Tot.
GK in	51	35%	18/40	15	2/3	0/0	2/3

GK out attack is counted if one part or whole attack was GK out

Defense with opponent goalkeeper out

	Attack				Reaction		
	Att.	Eff.	Shots	TF	FB	LD	Tot.
GK in	51	43%	22/38	16	2/2	0/0	2/2

Attack with player superiority/minority

	Attack				Reaction		
	Att.	Eff.	Shots	TF	FB	LD	Tot.
Superiority +1	5	20%	1/3	2	0/0	0/0	0/0
Normal	27	37%	10/18	9	2/3	0/0	2/3
Minority -1	8	38%	3/7	2	0/0	0/0	0/0

Player superiority counted at the end of attack (in case it changes during attack)

Defense with player superiority/minority

	Attack				Reaction		
	Att.	Eff.	Shots	TF	FB	LD	Tot.
Minority -1	8	38%	3/7	2	0/0	0/0	0/0
Normal	26	31%	8/16	11	1/1	0/0	1/1
Superiority +1	5	60%	3/4	1	0/0	0/0	0/0

Jersey number Tot. Total shooting 6m 6m (line) shooting 9m 9m shooting Wng. Wing shooting FB Fastbreak sh. 7m 7m penalty sh.
 Brk. Breakthrough sh. LD Long distance sh. As. Assists E7 Earned 7m pen. TF Technical Faults St. Steals 2m 2m punishments
 C7. Committed 7m E2 Earned 2m pun. YC. Yellow cards RC Red cards BC Blue cards Blk. Blocks S Starting Line-up



IHF Women's Youth (U18) World Championship

Poland (Kielce)

Placement Match 21-22



Match Team Statistics

Match No. 76

Angola 22 - 18 P.R. of China

(13 - 7) (9 - 11)

16.8.2018. 11:45

Attendance: 50

Hall Politechnika

Referees: Bartosz Leszczynski (POL) / Marcin Piechota (POL)

Shot distribution by player

2 H. Huang

	0/1	
		0/1
	1/1	

3 S. Liu

0/1		

5 J. Zhu

6 S. Chen

1/1		1/2
		1/2

1 post 1 miss.

7 Y. Tang

		1/1
1/2		1/1

1 miss. 1 block 0/1 lob

9 S. Lian

		0/1

11 H. Zhu

2/2		
1/1	1/1	1/2

1 block

13 M. Zhou

4/4		1/1

2 miss. 6 block

15 H. Wang

17 M. Sun

18 M. Sun

19 Y. Li

20 H. Dou

22 X. Dong

		1/1

TOTAL

1/1	0/1	1/2
2/3		3/6
6/7	2/2	3/4

1 post 4 miss. 8 block 0/1 lob

Saves distribution goalkeepers

12 C. Song

0/2	1/1	1/2
3/10		2/8
2/6	1/2	0/1

16 T. Zou

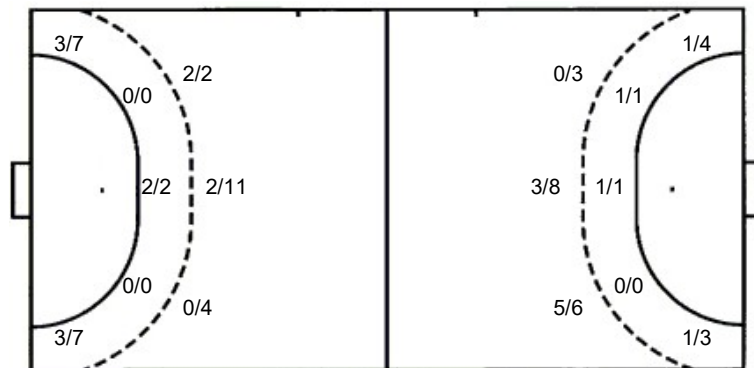
TOTAL

0/2	1/1	1/2
3/10		2/8
2/6	1/2	0/1

Shots by position

ATTACK

DEFENSE



7m penalties 3/3
Fastbreak 2/2
Breakthrough 1/2
Long dist. 0/0

7m penalties 2/2
Fastbreak 2/3
Breakthrough 6/7
Long dist. 0/0

Shooting statistics

Position	Goals	Sav.	Miss.	Post	Blk.	Total	%
Back (9m)	4	2	3	0	8	17	24
Line (6m)	2	0	0	0	0	2	100
Wing	6	7	1	0	0	14	43
7m penalties	3	0	0	0	0	3	100
Fastbreak	2	0	0	0	0	2	100
Breakthrough	1	0	0	1	0	2	50
Total	18	9	4	1	8	40	45

Jersey number
Brk. Breakthrough sh.
C7. Committed 7m
Tot. Total shooting
LD Long distance sh.
E2 Earned 2m pun.
6m 6m (line) shooting
As. Assists
YC. Yellow cards
9m 9m shooting
E7 Earned 7m pen.
RC Red cards
Wng. Wing shooting
TF Technical Faults
BC Blue cards
FB Fastbreak sh.
St. Steals
Blk. Blocks
7m 7m penalty sh.
2m 2m punishments
S Starting Line-up