



IHF Women's Youth (U18) World Championship

Poland (Kielce)

Eighth final



Match Team Statistics

Match No. 70

Romania 20 - 22 Sweden

(15 - 10) (5 - 12)

15.8.2018. 16:15

Attendance: 147

Hall Legionow

Referees: Viktoriia Alpaidze (RUS) / Tatiana Berezkina (RUS)

Romania

#	Surname and name	S	Goals / shots								Attack				Def.			Penalties			TP		
			Tot.	%	9m	6m	Wing	7m	FB	Brk.	LD	As.	E7	E2	TF	St.	C7	Blk	YC	2m		RC	BC
1	CHESTRARU Andreea Bianca																						0:31
2	BALACEANU Ioana Beatrice	S	3/7	43	1/4			0/1		2/2		1	3	1	2		1						53:46
3	CACE Adina Gabriela	S	7/13	54		5/9	2/3	0/1				1	1	1	1								60:00
4	KEREKES Eva																						1:08
7	POPA Andreea Cristina	S	4/8	50	1/3			2/4		1/1		4			2		1		1				51:51
8	BARABAS Monica Alexandra		0/2	0	0/2										2		1						8:27
9	VALCAN Denisa Andreea		0/1	0	0/1										2	1							10:15
10	MARIN Iuliana Daniela	S	2/3	67		1/2			1/1			1	2				1						55:52
11	TARSOAGA Andreea Rebeca	S	0/2	0	0/2							3	1				2						43:43
12	CIUCA Diana Cristiana	S										2											59:09
15	JIPA Stefania Oana											1											
18	MORARU Patricia Valentina		0/1	0	0/1																1		7:28
21	STAMIN Roberta Maria																						0:18
23	ILIE Marina Alexandra	S	3/6	50		1/4		2/2					1	1		1			1	1			58:52
24	PICA Miruna Cristina		0/1	0	0/1																		5:17
77	LASCATEU Diana		1/3	33	1/3																		3:23
	Team / bench																				1		
	UKUPNO		20/47	43	3/17	1/2	6/13	4/8	3/4	3/3	0/0	13	8	3	9	2	4	2	2	3	0	0	

#	Surname and name	Saves / shots								
		Tot.	%	9m	6m	Wing	7m	FB	Brk.	LD
1	CHESTRARU Andreea Bianca	0/1	0				0/1			
12	CIUCA Diana Cristiana	12/32	38	9/13	0/5	2/5	1/2	0/3	0/4	
	TOTAL	12/33	36	9/13	0/5	2/5	1/3	0/3	0/4	0/0

Coach: Carmen Andreea Amariei

Number of attacks: 54, Efficiency: 37%, Average Duration: 38,2 seconds

Attack by type of defense

	Shots	9m	6m	Wing	TF	E7	E2
On def. 6-0	13/35	3/17	1/2	6/13	9	8	3
Fastbreak	3/4				0	0	0

Defense by type

	Total	9m	6m	Wing	Stl.	C7	2m
Def. 6-0	15/35	4/21	5/5	2/5	2	4	3
Def. press.	1/1	0/0	0/0	1/1	0	0	0
Fastbreak	3/5				0	0	0

Attack with goalkeeper out

	Attack				Reaction		
	Att.	Eff.	Shots	TF	FB	LD	Tot.
GK out pl. minority	1	0%	0/1	0	0/0	0/0	0/0
GK in	53	38%	20/46	9	3/5	1/1	4/6

GK out attack is counted if one part or whole attack was GK out

Defense with opponent goalkeeper out

	Attack				Reaction		
	Att.	Eff.	Shots	TF	FB	LD	Tot.
GK out pl. super.	0	0%	0/0	0	0/0	0/0	0/0
GK in	55	40%	22/46	10	3/4	0/0	3/4

Attack with player superiority/minority

	Attack				Reaction		
	Att.	Eff.	Shots	TF	FB	LD	Tot.
Superiority +2	2	50%	1/2	0	0/0	0/0	0/0
Superiority +1	3	0%	0/2	1	0/0	0/0	0/0
Normal	26	38%	10/23	5	1/2	0/0	1/2
Minority -1	13	23%	3/10	3	2/2	1/1	3/3

Player superiority counted at the end of attack (in case it changes during attack)

Defense with player superiority/minority

	Attack				Reaction		
	Att.	Eff.	Shots	TF	FB	LD	Tot.
Minority -1	16	56%	9/12	3	0/0	0/0	0/0
Normal	24	42%	10/20	5	2/3	0/0	2/3
Superiority +1	3	0%	0/3	0	0/0	0/0	0/0
Superiority +2	1	100%	1/1	0	0/0	0/0	0/0

Jersey number Tot. Total shooting 6m 6m (line) shooting 9m 9m shooting Wng. Wing shooting FB Fastbreak sh. 7m 7m penalty sh.
 Brk. Breakthrough sh. LD Long distance sh. As. Assists E7 Earned 7m pen. TF Technical Faults St. Steals 2m 2m punishments
 C7. Committed 7m E2 Earned 2m pun. YC. Yellow cards RC Red cards BC Blue cards Blk. Blocks S Starting Line-up



IHF Women's Youth (U18) World Championship

Poland (Kielce)

Eighth final



Match Team Statistics

Match No. 70

Romania 20 - 22 Sweden

(15 - 10) (5 - 12)

15.8.2018. 16:15

Attendance: 147

Hall Legionow

Referees: Viktoriia Alpaidze (RUS) / Tatiana Berezkina (RUS)

Shot distribution by player

21. Balaceanu

		0/1
0/1		2/2
		1/1

1 post 1 miss.

3 A. Cace

1/2	0/1	
	0/1	0/1
2/3	2/2	1/1

1 post 1/1 lob

4 E. Kerekes

7 A. Popa

1/2		
1/1		1/1
1/1		

2 miss. 1 block

8 M. Barabas

2 post

9 D. Valcan

1 block

10 I. Marin

		2/2
0/1		

11 A. Tarsoaga

0/1		

1 post

15 S. Jipa

18 P. Moraru

0/1		

21 R. Stamin

23 M. Ilie

0/1		
		2/2

1 miss. 1/2 lob

24 M. Pica

1 miss.

77 D. Lascateu

0/1		
1/2		

TOTAL

2/4	0/1	0/1
1/6	0/1	5/6
4/7	2/2	4/4

5 post 5 miss. 2 block 2/3 lob

Saves distribution goalkeepers

1 A. Chetraru

		0/1

12 D. Ciuca

1/2	1/1	0/1
1/4	0/1	4/12
1/2	2/2	2/8

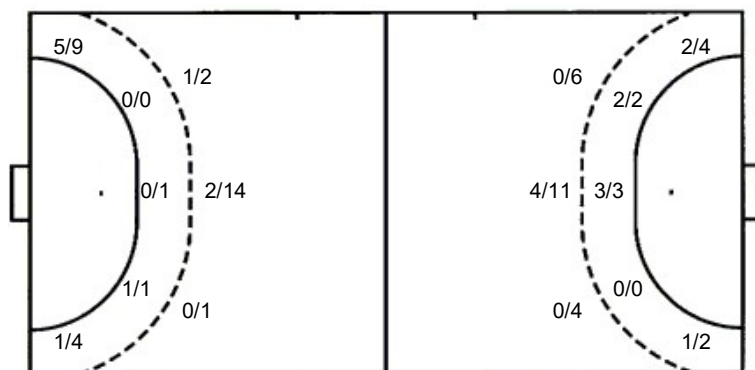
TOTAL

1/2	1/1	0/1
1/4	0/1	4/13
1/2	2/2	2/8

Shots by position

ATTACK

DEFENSE



7m penalties 4/8
Fastbreak 3/4
Breakthrough 3/3
Long dist. 0/0

7m penalties 2/4
Fastbreak 3/5
Breakthrough 4/4
Long dist. 1/1

Shooting statistics

Position	Goals	Sav.	Miss.	Post	Blk.	Total	%
Back (9m)	3	6	2	4	2	17	18
Line (6m)	1	1	0	0	0	2	50
Wing	6	6	1	0	0	13	46
7m penalties	4	1	2	1	0	8	50
Fastbreak	3	1	0	0	0	4	75
Breakthrough	3	0	0	0	0	3	100
Total	20	15	5	5	2	47	43

Jersey number Tot. Total shooting 6m 6m (line) shooting 9m 9m shooting Wng. Wing shooting FB Fastbreak sh. 7m 7m penalty sh.
Brk. Breakthrough sh. LD Long distance sh. As. Assists E7 Earned 7m pen. TF Technical Faults St. Steals 2m 2m punishments
C7. Committed 7m E2 Earned 2m pun. YC. Yellow cards RC Red cards BC Blue cards Blk. Blocks S Starting Line-up



IHF Women's Youth (U18) World Championship

Poland (Kielce)

Eighth final



Match Team Statistics

Match No. 70

Romania 20 - 22 Sweden

(15 - 10) (5 - 12)

15.8.2018. 16:15

Attendance: 147

Hall Legionow

Referees: Viktoriia Alpaidze (RUS) / Tatiana Berezkina (RUS)

Shot distribution by player

5 T. Alm

6 L. Cardell

7 J. Moreno

0/1		
		2/2

1 post 1 miss.

8 E. Wahlström

13 E. Wallenberg

		1/1
	0/1	

14 M. Sandberg

1/1		1/1

1 miss.

15 C. Dahlström

	1/1	
		1/1

18 Z. Jarvin

		1/1

1 block

19 N. Dano

		1/2
0/1		0/1

2 post 2 miss.

20 A. Sjöstrand
Hallman

		1/1
1/1		2/2

22 W. Schelin

23 I. Andersson

1/1	0/1	1/1
1/2		3/6
	0/1	2/3

3 miss. 1 block

24 K. Dahlberg

1/1		

TOTAL

1/2	0/1	1/1
3/4	1/1	9/13
1/2	0/2	6/8

3 post 7 miss. 2 block

Saves distribution goalkeepers

1 W. Lundahl

12 J.
Hultberg-Dahlgren

1/3	1/1	1/1
5/6	1/1	1/6
3/6	0/2	0/4

16 T. Espling-Ek

1/1		
0/1		

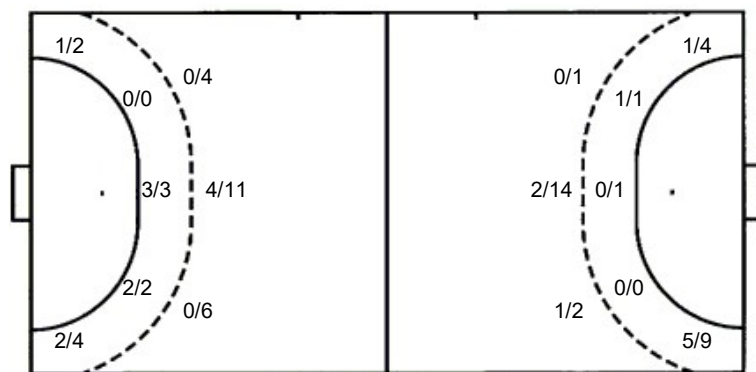
TOTAL

2/4	1/1	1/1
5/6	1/1	1/6
3/7	0/2	0/4

Shots by position

ATTACK

DEFENSE



7m penalties 2/4
Fastbreak 3/5
Breakthrough 4/4
Long dist. 1/1

7m penalties 4/8
Fastbreak 3/4
Breakthrough 3/3
Long dist. 0/0

Shooting statistics

Position	Goals	Sav.	Miss.	Post	Blk.	Total	%
Back (9m)	4	9	4	2	2	21	19
Line (6m)	5	0	0	0	0	5	100
Wing	3	2	1	0	0	6	50
7m penalties	2	1	1	0	0	4	50
Fastbreak	3	0	1	1	0	5	60
Breakthrough	4	0	0	0	0	4	100
Total	21	12	7	3	2	45	47

Jersey number Tot. Total shooting 6m 6m (line) shooting 9m 9m shooting Wng. Wing shooting FB Fastbreak sh. 7m 7m penalty sh.
Brk. Breakthrough sh. LD Long distance sh. As. Assists E7 Earned 7m pen. TF Technical Faults St. Steals 2m 2m punishments
C7. Committed 7m E2 Earned 2m pun. YC. Yellow cards RC Red cards BC Blue cards Blk. Blocks S Starting Line-up