



IHF Women's Youth (U18) World Championship

Poland (Kielce)

Preliminary Round - Group B



Match Team Statistics

Egypt 12 - 23 Chile

7.8.2018. 20:30

Match No. 6

(6 - 10) (6 - 13)

Attendance: 180

Hall Legionow

Referees: Tomoko Ota (JPN) / Mariko Shimajiri (JPN)

Egypt

#	Surname and name	S	Goals / shots								Attack			Def.			Penalties			TP				
			Tot.	%	9m	6m	Wing	7m	FB	Brk.	LD	As.	E7	E2	TF	St.	C7	Blk	YC		2m	RC	BC	
5	ESLAM ZAKI AHMED Alaa		0/4	0	0/3			0/1															25:07	
7	KASSEM IBRAHEM KASSEM Sandy																							
8	AHMED MOUSSA ELSHAWARBY Shahd	S	2/3	67		2/3										3		1			1		40:40	
10	REFAT KAMAL REFAIE Samira		1/1	100	1/1											1							26:09	
11	TAREK MORSY KHEDR Aya	S	1/2	50	0/1											3				1	2		33:31	
14	HANY MAHMOUD MABROUK Farida	S	4/10	40	1/3	0/1	3/6									1							40:29	
16	USAMA ABDELFAHAT ELSHAZLY Farah	S														1							57:10	
20	MOHAMED RADY AHMED Rana	S	0/6	0	0/6											2							36:01	
22	SALAH ELSAYED HASSANEIN Yara																						0:01	
23	HAITHAM HAMMAD ZAKI Laila		1/2	50		1/2										1					2		29:14	
55	ABDELRAZEK ALI EID ALI Salma	S	1/4	25			0/2			1/2						1	1						44:46	
66	EMADALDIEN MOHAMED OSMAN Yassmen	S														1		1			2		30:00	
72	OSAMA EBEID ABDALLA Lara																						0:23	
89	MAMDOU MOHAMED MAHMOUD Nada		0/3	0	0/3											1		1					10:12	
91	MOHAMED GOUDA WAHDAN Habiba																		1	1				12:41
96	KHALED FATHY AHMED Sohaila		2/4	50	0/1	1/1	0/1	1/1								5	1						33:36	
	Team / bench																					1		
	UKUPNO		12/39	31	2/18	4/7	3/10	1/1	1/2	1/1	0/0	3	1	2	23	3	2	0	2	7	0	0		

#	Surname and name	Saves / shots								
		Tot.	%	9m	6m	Wing	7m	FB	Brk.	LD
16	USAMA ABDELFAHAT ELSHAZLY Farah	15/38	39	5/11	1/7	8/11	0/1	1/6	0/2	
72	OSAMA EBEID ABDALLA Lara	1/1	100			1/1				
	TOTAL	16/39	41	5/11	1/7	8/11	1/2	1/6	0/2	0/0

Coach: Ashraf Saleh Aly Shemis

Number of attacks: 63, Efficiency: 19%, Average Duration: 33,0 seconds

Attack by type of defense

	Shots	9m	6m	Wing	TF	E7	E2
On def. 6-0	10/34	2/16	4/7	3/10	20	1	2
On def. 5-1	0/2	0/2	0/0	0/0	3	0	0
Fastbreak	1/2				0	0	0

Defense by type

	Total	9m	6m	Wing	Stl.	C7	2m
Def. 6-0	16/36	5/14	6/8	3/12	3	2	5
Def. 5-1	0/1	0/0	0/0	0/1	0	0	2
Def. press.	0/1	0/0	0/1	0/0	0	0	0
Fastbreak	5/9				0	0	0

Attack with goalkeeper out

	Attack				Reaction		
	Att.	Eff.	Shots	TF	FB	LD	Tot.
GK in	63	19%	12/39	23	5/9	0/0	5/9

GK out attack is counted if one part or whole attack was GK out

Defense with opponent goalkeeper out

	Attack				Reaction		
	Att.	Eff.	Shots	TF	FB	LD	Tot.
GK in	62	35%	22/49	13	1/2	0/0	1/2

Attack with player superiority/minority

	Attack				Reaction		
	Att.	Eff.	Shots	TF	FB	LD	Tot.
Superiority +1	5	60%	3/4	1	1/1	0/0	1/1
Normal	35	11%	4/20	15	3/6	0/0	3/6
Minority -1	18	22%	4/12	5	1/2	0/0	1/2

Player superiority counted at the end of attack (in case it changes during attack)

Defense with player superiority/minority

	Attack				Reaction		
	Att.	Eff.	Shots	TF	FB	LD	Tot.
Minority -1	20	50%	10/19	2	0/1	0/0	0/1
Normal	35	31%	11/26	8	0/0	0/0	0/0
Superiority +1	3	33%	1/3	0	0/0	0/0	0/0

Jersey number Tot. Total shooting 6m 6m (line) shooting 9m 9m shooting Wng. Wing shooting FB Fastbreak sh. 7m 7m penalty sh.
 Brk. Breakthrough sh. LD Long distance sh. As. Assists E7 Earned 7m pen. TF Technical Faults St. Steals 2m 2m punishments
 C7. Committed 7m E2 Earned 2m pun. YC. Yellow cards RC Red cards BC Blue cards Blk. Blocks S Starting Line-up



IHF Women's Youth (U18) World Championship

Poland (Kielce)

Preliminary Round - Group B



Match Team Statistics

Match No. 6

Egypt 12 - 23 Chile

(6 - 10) (6 - 13)

7.8.2018. 20:30

Attendance: 180

Hall Legionow

Referees: Tomoko Ota (JPN) / Mariko Shimajiri (JPN)

Shot distribution by player

5 A. Eslam Zaki
Ahmed

	0/1	0/3

7 S. Kassem Ibrahim
Kassem

8 S. Ahmed Moussa
Eshwarby

		2/2

1 post

10 S. Refat Kamal
Refaie

		1/1

11 A. Tarek Morsy
Khedr

		1/1

1 block

14 F. Hany Mahmoud
Mabrouk

		1/1
0/1	1/1	1/2
0/1	1/1	0/1

1 post 1 miss.

20 R. Mohamed Rady
Ahmed

		0/1
0/1		0/1

2 miss. 1 block

22 Y. Salah Elsayed
Hassanein

23 L. Haitham
Hammad Zaki

0/1	1/1	

55 S. Abdelrazek Ali
Eid Ali

		0/1
0/1		1/2

66 Y. Emadaldien
Mohamed Osman

89 N. Mamdou
Mohamed Mahmoud

		0/1
0/1		

1 block

91 H. Mohamed Gouda
Wahdan

96 S. Khaled Fathy
Ahmed

		1/1
1/1		0/1

1 post

TOTAL

		1/2
0/3	2/3	6/13
1/4	1/1	1/4

3 post 3 miss. 3 block

Saves distribution goalkeepers

16 F. Usama
Abdelfatah
Elshazly

1/1	1/3	0/1
3/8	1/3	4/10
1/3	2/4	2/5

72 L. Osama
Ebeid Abdalla

1/1		

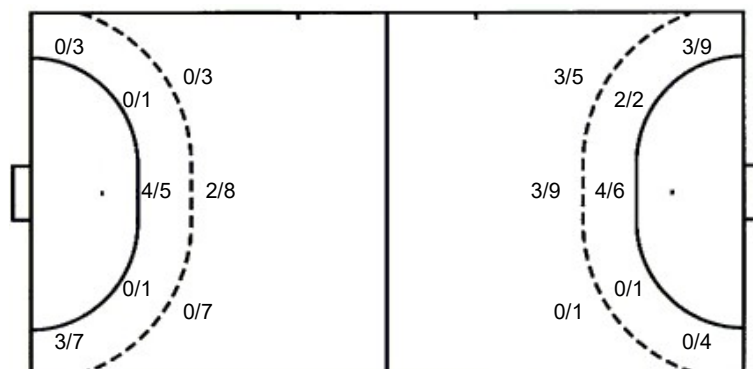
TOTAL

1/1	1/3	0/1
4/9	1/3	4/10
1/3	2/4	2/5

Shots by position

ATTACK

DEFENSE



7m penalties 1/1
Fastbreak 1/2
Breakthrough 1/1
Long dist. 0/0

7m penalties 1/2
Fastbreak 5/9
Breakthrough 2/2
Long dist. 0/0

Shooting statistics

Position	Goals	Sav.	Miss.	Post	Bik.	Total	%
Back (9m)	2	8	3	2	3	18	11
Line (6m)	4	2	0	1	0	7	57
Wing	3	7	0	0	0	10	30
7m penalties	1	0	0	0	0	1	100
Fastbreak	1	1	0	0	0	2	50
Breakthrough	1	0	0	0	0	1	100
Total	12	18	3	3	3	39	31

Jersey number Tot. Total shooting 6m 6m (line) shooting 9m 9m shooting Wng. Wing shooting FB Fastbreak sh. 7m 7m penalty sh.
Brk. Breakthrough sh. LD Long distance sh. As. Assists E7 Earned 7m pen. TF Technical Faults St. Steals 2m 2m punishments
C7. Committed 7m E2 Earned 2m pun. YC. Yellow cards RC Red cards BC Blue cards Blk. Blocks S Starting Line-up



IHF Women's Youth (U18) World Championship

Poland (Kielce)

Preliminary Round - Group B



Match Team Statistics

Egypt 12 - 23 Chile

7.8.2018. 20:30

Match No. 6

(6 - 10) (6 - 13)

Attendance: 180

Hall Legionow

Referees: Tomoko Ota (JPN) / Mariko Shimajiri (JPN)

Chile

#	Surname and name	S	Goals / shots									Attack				Def.			Penalties				TP				
			Tot.	%	9m	6m	Wing	7m	FB	Brk.	LD	As.	E7	E2	TF	St.	C7	Blk	YC	2m	RC	BC					
1	PARRA Francisca	S	4/6	67	2/4			2/2																			41:39
2	BAUMANN Javiera		1/4	25				1/4																			11:38
3	ALVAREZ Fernanda	S	1/7	14		0/1	0/4			1/2															1		46:04
4	SEPULVEDA Valentina	S	6/9	67	3/6	1/1																					39:28
8	ARAYA Josefa		1/2	50	0/1					1/1																	19:03
9	SEPULVEDA Catalina																								1		31:19
10	ALARCON Sofia	S	1/3	33	1/1					0/2																	32:04
13	REBOLLEDO Antonia	S	2/6	33				0/3	1/2	1/1																	35:05
14	GOMEZ Sofia																										26:40
15	CORTEZ Madeleine	S																									59:14
16	RAMIREZ Evelyn		3/4	75		2/3				1/1																	23:26
17	PACHECO Pia	S	3/4	75		3/3				0/1																	40:39
20	DIAZ Constanza		1/1	100						1/1																	2:28
22	GAJARDO Martina		0/3	0	0/3																						3:43
31	YARELLI Leon		0/1	0		0/1																					7:30
44	ANDRADE Javiera																										
	Team / bench																										
	UKUPNO		23/50	46	6/15	6/9	3/13	1/2	5/9	2/2	0/0		1	2	6	13	10	1	3	1	2	0	0				

#	Surname and name	Saves / shots								
		Tot.	%	9m	6m	Wing	7m	FB	Brk.	LD
15	CORTEZ Madeleine	16/26	62	8/10	2/5	6/9	0/1	0/1		
44	ANDRADE Javiera	2/4	50		0/1	1/1		1/1	0/1	
	TOTAL	18/30	60	8/10	2/6	7/10	0/1	2/2	0/1	0/0

Coach: Felipe Barrientos

Number of attacks: 62, Efficiency: 37%, Average Duration: 24,1 seconds

Attack by type of defense

	Shots	9m	6m	Wing	TF	E7	E2
On def. 6-0	16/36	5/14	6/8	3/12	10	2	4
On def. 5-1	0/1	0/0	0/0	0/1	2	0	2
On def. press.	0/1	0/0	0/1	0/0	1	0	0
Fastbreak	5/9				0	0	0

Defense by type

	Total	9m	6m	Wing	Stl.	C7	2m
Def. 6-0	10/34	2/16	4/7	3/10	10	1	2
Def. 5-1	0/2	0/2	0/0	0/0	0	0	0
Fastbreak	1/2				0	0	0

Attack with goalkeeper out

	Attack				Reaction		
	Att.	Eff.	Shots	TF	FB	LD	Tot.
GK in	62	35%	22/49	13	1/2	0/0	1/2

GK out attack is counted if one part or whole attack was GK out

Attack with player superiority/minority

	Attack				Reaction		
	Att.	Eff.	Shots	TF	FB	LD	Tot.
Superiority +1	20	50%	10/19	2	0/1	0/0	0/1
Normal	35	31%	11/26	8	0/0	0/0	0/0
Minority -1	3	33%	1/3	0	0/0	0/0	0/0

Player superiority counted at the end of attack (in case it changes during attack)

Defense with opponent goalkeeper out

	Attack				Reaction		
	Att.	Eff.	Shots	TF	FB	LD	Tot.
GK in	63	19%	12/39	23	5/9	0/0	5/9

Defense with player superiority/minority

	Attack				Reaction		
	Att.	Eff.	Shots	TF	FB	LD	Tot.
Minority -1	5	60%	3/4	1	1/1	0/0	1/1
Normal	35	11%	4/20	15	3/6	0/0	3/6
Superiority +1	18	22%	4/12	5	1/2	0/0	1/2

Jersey number Tot. Total shooting 6m 6m (line) shooting 9m 9m shooting Wng Wing shooting FB Fastbreak sh. 7m 7m penalty sh.
 Brk. Breakthrough sh. LD Long distance sh. As. Assists E7 Earned 7m pen. TF Technical Faults St. Steals 2m 2m punishments
 C7. Committed 7m E2 Earned 2m pun. YC. Yellow cards RC Red cards BC Blue cards Blk. Blocks S Starting Line-up



IHF Women's Youth (U18) World Championship

Poland (Kielce)

Preliminary Round - Group B



Match Team Statistics

Egypt 12 - 23 Chile

7.8.2018. 20:30

Match No. 6

(6 - 10) (6 - 13)

Attendance: 180

Hall Legionow

Referees: Tomoko Ota (JPN) / Mariko Shimajiri (JPN)

Shot distribution by player

1 F. Parra

	1/1	1/1
1/1		
		1/2

1 miss.

2 J. Baumann

0/1		1/1

1 post 1 miss.

3 F. Alvarez

1/2		0/2
0/1	0/1	0/1

1 post

4 V. Sepulveda

	1/1	
1/1	1/1	2/2
	1/2	

1 post 1 miss.

8 J. Araya

		1/1

1 post

9 C. Sepulveda

10 S. Alarcon

1/1		

2 miss.

13 A. Rebolledo

	0/1	
0/2		2/3

14 S. Gomez

16 E. Ramirez

	1/1	
1/1		1/1

1 post

17 P. Pacheco

1/1		
1/1	1/1	

1 miss.

20 C. Diaz

		1/1

22 M. Gajardo

0/1		
	0/1	0/1

31 L. Yarelli

1 miss.

TOTAL

0/1	2/3	1/1
5/9	2/3	6/10
2/3	2/4	3/5

4 post 7 miss.

Saves distribution goalkeepers

15 M. Cortez

		0/1
3/3	1/3	7/12
3/3	0/1	2/3

44 J. Andrade

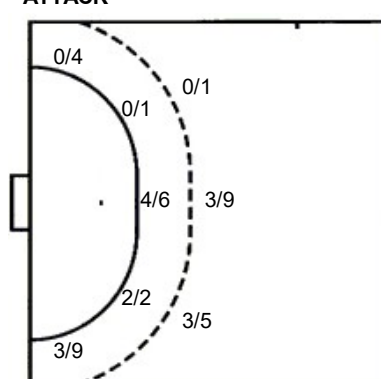
		1/1
		0/1
0/1		1/1

TOTAL

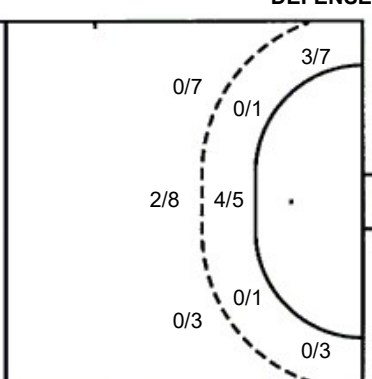
		1/2
3/3	1/3	7/13
3/4	0/1	3/4

Shots by position

ATTACK



DEFENSE



7m penalties 1/2
Fastbreak 5/9
Breakthrough 2/2
Long dist. 0/0

7m penalties 1/1
Fastbreak 1/2
Breakthrough 1/1
Long dist. 0/0

Shooting statistics

Position	Goals	Sav.	Miss.	Post	Bik.	Total	%
Back (9m)	6	5	2	2	0	15	40
Line (6m)	6	1	1	1	0	9	67
Wing	3	8	1	1	0	13	23
7m penalties	1	1	0	0	0	2	50
Fastbreak	5	1	3	0	0	9	56
Breakthrough	2	0	0	0	0	2	100
Total	23	16	7	4	0	50	46

Jersey number Tot. Total shooting 6m 6m (line) shooting 9m 9m shooting Wng. Wing shooting FB Fastbreak sh. 7m 7m penalty sh.
Brk. Breakthrough sh. LD Long distance sh. As. Assists E7 Earned 7m pen. TF Technical Faults St. Steals 2m 2m punishments
C7. Committed 7m E2 Earned 2m pun. YC. Yellow cards RC Red cards BC Blue cards Blk. Blocks S Starting Line-up