



IHF Women's Youth (U18) World Championship

Poland (Kielce)

Placement Match 21-24



Match Team Statistics

Match No. 61

Angola 26 - 17 Egypt

(12 - 10) (14 - 7)

15.8.2018. 09:30

Attendance: 20

Hall Legionow

Referees: Denis Bolic (AUT) / Christoph Hurich (AUT)

Angola

#	Surname and name	S	Goals / shots									Attack				Def.			Penalties			TP		
			Tot.	%	9m	6m	Wing	7m	FB	Brk.	LD	As.	E7	E2	TF	St.	C7	Blk	YC	2m	RC		BC	
1	FREDERICO Paula Francisco																							9:23
3	SUCACUEXE Catarina Paulo S																							
5	ESTEVEES Edna Kiala											1	1		1	1								13:57
6	KIALA Luzia Santana	S	8/14	57	4/8				2/3	0/1	2/2				1	1	1	2		1				40:38
7	MONTEIRO Jelsia Maria Miguel	S	2/5	40	0/1			2/3		0/1							1							58:58
10	MASSEU Beatriz Diana	S	10/20	50	4/11	1/2			0/1	3/4	2/2			2			1	1	2					53:20
11	CASTRO Thayany Cacaica B																							
12	DA SILVA Paulina Bazolau	S															2							31:39
13	TCHITONGUA Isabel Marcelino															1								4:28
14	COIO Ana Jandira A	S	0/1	0	0/1									1					1		1			31:31
18	GABRIEL Chelsia Cristina	S	1/2	50							1/2			4	2	1	3							41:23
19	SEBASTIAO Zuraida Agnela M.		1/1	100						1/1				1					1					41:02
20	FERREIRA Lúgia Alexandra J																							8:19
26	ROSARIO Dolores Palmira L.	S	4/7	57				4/7														1		53:18
29	MATEUS Rossana Sebastiao													1				1	2		2			32:04
Team / bench																								
UKUPNO			26/50	52	8/21	1/2	6/10	2/4	4/7	5/6	0/0	10	4	3	9	5	2	5	0	4	0	0		

#	Surname and name	Saves / shots								
		Tot.	%	9m	6m	Wing	7m	FB	Brk.	LD
1	FREDERICO Paula Francisco	5/8	63	1/1	2/3	1/3			1/1	
12	DA SILVA Paulina Bazolau	4/16	25	1/3	0/1	1/7	0/1	1/2	1/2	
20	FERREIRA Lúgia Alexandra J	1/3	33	0/1		1/1	0/1			
TOTAL		10/27	37	2/5	2/4	3/11	0/2	1/2	2/3	0/0

Coach:

Number of attacks: 54, Efficiency: 48%, Average Duration: 39,9 seconds

Attack by type of defense

	Shots	9m	6m	Wing	TF	E7	E2
On def. 6-0	13/22	6/13	0/0	2/3	5	3	2
On def. 5-1	7/17	2/8	1/2	4/7	4	1	1
Fastbreak	4/7				0	0	0

Defense by type

	Total	9m	6m	Wing	Stl.	C7	2m
Def. 6-0	13/26	3/8	2/4	7/11	2	2	4
Def. 5-1	1/6	0/4	0/0	1/2	3	0	0
Fastbreak	1/2				0	0	0

Attack with goalkeeper out

	Attack				Reaction		
	Att.	Eff.	Shots	TF	FB	LD	Tot.
GK in	54	48%	26/50	9	1/2	0/0	1/2

GK out attack is counted if one part or whole attack was GK out

Defense with opponent goalkeeper out

	Attack				Reaction		
	Att.	Eff.	Shots	TF	FB	LD	Tot.
GK in	53	32%	17/36	18	4/7	0/0	4/7

Attack with player superiority/minority

	Attack				Reaction		
	Att.	Eff.	Shots	TF	FB	LD	Tot.
Superiority +1	4	75%	3/4	0	0/0	0/0	0/0
Normal	23	48%	11/20	4	0/0	0/0	0/0
Minority -1	8	50%	4/9	0	0/0	0/0	0/0

Player superiority counted at the end of attack (in case it changes during attack)

Defense with player superiority/minority

	Attack				Reaction		
	Att.	Eff.	Shots	TF	FB	LD	Tot.
Minority -1	8	75%	6/8	0	1/1	0/0	1/1
Normal	25	20%	5/14	10	2/4	0/0	2/4
Superiority +1	2	0%	0/2	1	0/0	0/0	0/0

Jersey number Tot. Total shooting 6m 6m (line) shooting 9m 9m shooting Wng. Wing shooting FB Fastbreak sh. 7m 7m penalty sh.
 Brk. Breakthrough sh. LD Long distance sh. As. Assists E7 Earned 7m pen. TF Technical Faults St. Steals 2m 2m punishments
 C7. Committed 7m E2 Earned 2m pun. YC. Yellow cards RC Red cards BC Blue cards Blk. Blocks S Starting Line-up



IHF Women's Youth (U18) World Championship

Poland (Kielce)

Placement Match 21-24



Match Team Statistics

Match No. 61

Angola 26 - 17 Egypt

(12 - 10) (14 - 7)

15.8.2018. 09:30

Attendance: 20

Hall Legionow

Referees: Denis Bolic (AUT) / Christoph Hurich (AUT)

Shot distribution by player

3 C. Sucacuexe

5 E. Esteves

6 L. Kiala

		1/1
4/5		1/3
1/1		1/1

2 post 1 miss.

7 J. Monteiro

0/1		2/3

1 post

10 B. Masseur

		1/1
1/2		4/7
2/3	1/1	1/1

2 miss. 3 block

11 T. Castro

13 I. Tchitongua

14 A. Coio

0/1		

18 C. Gabriel

		1/2

19 Z. Sebastiao

		1/1

26 D. Rosario

		1/1
2/3	0/1	
1/1		

1 post

29 R. Mateus

TOTAL

		3/3
7/11	0/1	8/15
4/5	1/2	3/3

4 post 3 miss. 3 block

Saves distribution goalkeepers

1 P. Frederico

1/1		
1/1		0/2
0/1		2/2

12 P. Da Silva

3/6		0/5
0/2		

20 L. Ferreira

0/1		
1/2		

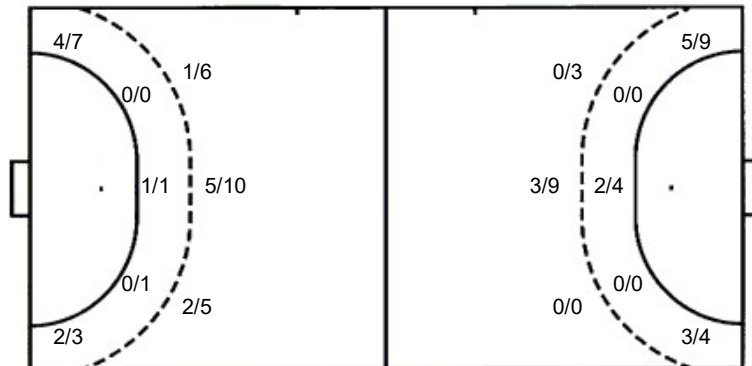
TOTAL

1/1		
4/8		0/7
1/5		2/2

Shots by position

ATTACK

DEFENSE



7m penalties 2/4
Fastbreak 4/7
Breakthrough 5/6
Long dist. 0/0

7m penalties 2/2
Fastbreak 1/2
Breakthrough 1/3
Long dist. 0/0

Shooting statistics

Position	Goals	Sav.	Miss.	Post	Blk.	Total	%
Back (9m)	8	5	3	2	3	21	38
Line (6m)	1	1	0	0	0	2	50
Wing	6	3	0	1	0	10	60
7m penalties	2	2	0	0	0	4	50
Fastbreak	4	2	0	1	0	7	57
Breakthrough	5	1	0	0	0	6	83
Total	26	14	3	4	3	50	52

Jersey number Tot. Total shooting 6m 6m (line) shooting 9m 9m shooting Wng. Wing shooting FB Fastbreak sh. 7m 7m penalty sh.
Brk. Breakthrough sh. LD Long distance sh. As. Assists E7 Earned 7m pen. TF Technical Faults St. Steals 2m 2m punishments
C7. Committed 7m E2 Earned 2m pun. YC. Yellow cards RC Red cards BC Blue cards Blk. Blocks S Starting Line-up



IHF Women's Youth (U18) World Championship

Poland (Kielce)

Placement Match 21-24



Match Team Statistics

Match No. 61

Angola 26 - 17 Egypt

(12 - 10) (14 - 7)

15.8.2018. 09:30

Attendance: 20

Hall Legionow

Referees: Denis Bolic (AUT) / Christoph Hurich (AUT)

Egypt

#	Surname and name	S	Goals / shots								Attack				Def.			Penalties			TP			
			Tot.	%	9m	6m	Wing	7m	FB	Brk.	LD	As.	E7	E2	TF	St.	C7	Blk	YC	2m		RC	BC	
7	KASSEM IBRAHEM KASSEM Sandy		0/1	0																				5:39
8	AHMED MOUSSA ELSHAWARBY Shahd	S	1/2	50		1/2								1	1			1		1				48:30
10	REFAT KAMAL REFAIE Samira		0/1	0	0/1									1			2					1		12:46
11	TAREK MORSY KHEDR Aya	S	3/6	50	0/1			3/5									1		1	2		1		49:08
14	HANY MAHMOUD MABROUK Farida		2/4	50				2/4								1			1					19:08
16	USAMA ABDELFAH EL SHAZLY Farah	S																						58:29
20	MOHAMED RADY AHMED Rana	S	1/6	17	0/5				1/1					5			4	2	1			1	1	51:39
22	SALAH ELSAYED HASSANEIN Yara		1/1	100					1/1															0:18
23	HAITHAM HAMMAD ZAKI Laila		1/2	50		1/2																		13:21
55	ABDELRAZEK ALI EID ALI Salma	S	3/5	60				2/3		1/2							6	1						49:00
66	EMADALDIEN MOHAMED OSMAN Yassmen	S	0/1	0										1			3		1					37:04
72	OSAMA EBEID ABDALLA Lara																							1:19
89	MAMDOU MOHAMED MAHMOUD Nada	S	2/4	50	1/3									2	1									37:16
91	MOHAMED GOUDA WAHDAN Habiba		1/1	100				1/1											1					11:00
96	KHALED FATHY AHMED Sohaila		2/2	100	2/2												2	1						25:23
Team / bench																								
UKUPNO			17/36	47	3/12	2/4	8/13	2/2	1/2	1/3	0/0	10	2	3	18	4	4	3	1	3	0	0		

#	Surname and name	Saves / shots								
		Tot.	%	9m	6m	Wing	7m	FB	Brk.	LD
16	USAMA ABDELFAH EL SHAZLY Farah	13/37	35	5/13	1/2	3/8	1/2	2/6	1/6	
72	OSAMA EBEID ABDALLA Lara	1/3	33			0/1	1/2			
TOTAL		14/40	35	5/13	1/2	3/9	2/4	3/6	1/6	0/0

Coach: Ashraf Saleh Aly Shemis

Number of attacks: 53, Efficiency: 32%, Average Duration: 27,3 seconds

Attack by type of defense

	Shots	9m	6m	Wing	TF	E7	E2
On def. 6-0	13/26	3/8	2/4	7/11	12	2	3
On def. 5-1	1/6	0/4	0/0	1/2	6	0	0
Fastbreak	1/2				0	0	0

Defense by type

	Total	9m	6m	Wing	Stl.	C7	2m
Def. 6-0	13/22	6/13	0/0	2/3	4	3	2
Def. 5-1	7/17	2/8	1/2	4/7	0	1	1
Fastbreak	4/7				0	0	0

Attack with goalkeeper out

	Attack				Reaction		
	Att.	Eff.	Shots	TF	FB	LD	Tot.
GK in	53	32%	17/36	18	4/7	0/0	4/7

GK out attack is counted if one part or whole attack was GK out

Defense with opponent goalkeeper out

	Attack				Reaction		
	Att.	Eff.	Shots	TF	FB	LD	Tot.
GK in	54	48%	26/50	9	1/2	0/0	1/2

Attack with player superiority/minority

	Attack				Reaction		
	Att.	Eff.	Shots	TF	FB	LD	Tot.
Superiority +1	8	75%	6/8	0	1/1	0/0	1/1
Normal	25	20%	5/14	10	2/4	0/0	2/4
Minority -1	2	0%	0/2	1	0/0	0/0	0/0

Player superiority counted at the end of attack (in case it changes during attack)

Defense with player superiority/minority

	Attack				Reaction		
	Att.	Eff.	Shots	TF	FB	LD	Tot.
Minority -1	4	75%	3/4	0	0/0	0/0	0/0
Normal	23	48%	11/20	4	0/0	0/0	0/0
Superiority +1	8	50%	4/9	0	0/0	0/0	0/0

Jersey number Tot. Total shooting 6m 6m (line) shooting 9m 9m shooting Wng Wing shooting FB Fastbreak sh. 7m 7m penalty sh.
 Brk. Breakthrough sh. LD Long distance sh. As. Assists E7 Earned 7m pen. TF Technical Faults St. Steals 2m 2m punishments
 C7. Committed 7m E2 Earned 2m pun. YC. Yellow cards RC Red cards BC Blue cards Blk. Blocks S Starting Line-up



IHF Women's Youth (U18) World Championship

Poland (Kielce)

Placement Match 21-24



Match Team Statistics

Match No. 61

Angola 26 - 17 Egypt

(12 - 10) (14 - 7)

15.8.2018. 09:30

Attendance: 20

Hall Legionow

Referees: Denis Bolic (AUT) / Christoph Hurich (AUT)

Shot distribution by player

7 S. Kassem Ibrahim Kassem

0/1		

8 S. Ahmed Moussa Elshawarby

1/2 lob

10 S. Refat Kamal Refaie

0/1		

11 A. Tarek Morsy Khedr

		2/2
1/2		

1 miss. 0/1 lob

14 F. Hany Mahmoud Mabrouk

		2/2

2 miss.

20 R. Mohamed Rady Ahmed

0/1		
1/1		

1 miss. 3 block

22 Y. Salah Elsayed Hassanein

		1/1

23 L. Haitham Hammad Zaki

		1/1
		0/1

55 S. Abdelrazek Ali Eid Ali

1/2		
1/1		0/1

1/1 lob

66 Y. Emadaldien Mohamed Osman

0/1		

89 N. Mamdou Mohamed Mahmoud

		1/1
1/1		

2 block

91 H. Mohamed Gouda Wahdan

1/1		

96 S. Khaled Fathy Ahmed

2/2		

TOTAL

0/1		
4/8		7/7
4/5		0/2

4 miss. 5 block 2/4 lob

Saves distribution goalkeepers

16 F. Usama Abdelfatah Elshazly

		0/2
4/10	1/1	7/15
0/4	1/2	0/3

72 L. Osama Ebeid Abdalla

		0/1
0/1		
1/1		

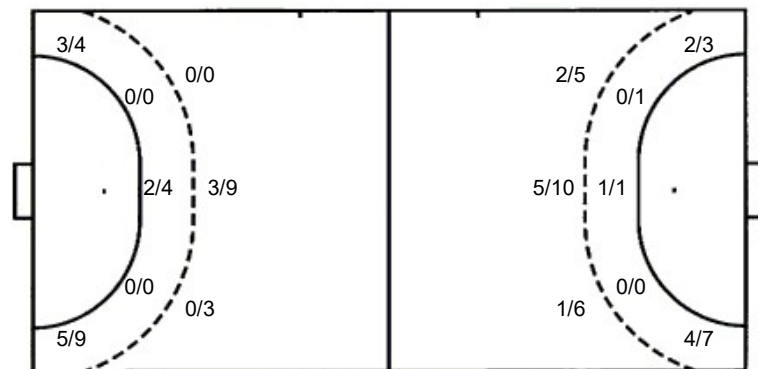
TOTAL

		0/3
4/11	1/1	7/15
1/5	1/2	0/3

Shots by position

ATTACK

DEFENSE



7m penalties 2/2
Fastbreak 1/2
Breakthrough 1/3
Long dist. 0/0

7m penalties 2/4
Fastbreak 4/7
Breakthrough 5/6
Long dist. 0/0

Shooting statistics

Position	Goals	Sav.	Miss.	Post	Blk.	Total	%
Back (9m)	3	2	2	0	5	12	25
Line (6m)	2	2	0	0	0	4	50
Wing	8	3	2	0	0	13	62
7m penalties	2	0	0	0	0	2	100
Fastbreak	1	1	0	0	0	2	50
Breakthrough	1	2	0	0	0	3	33
Total	17	10	4	0	5	36	47

Jersey number Tot. Total shooting 6m 6m (line) shooting 9m 9m shooting Wng. Wing shooting FB Fastbreak sh. 7m 7m penalty sh.
Brk. Breakthrough sh. LD Long distance sh. As. Assists E7 Earned 7m pen. TF Technical Faults St. Steals 2m 2m punishments
C7. Committed 7m E2 Earned 2m pun. YC. Yellow cards RC Red cards BC Blue cards Blk. Blocks S Starting Line-up