





# IHF Women's Youth (U18) World Championship

Poland (Kielce)

Preliminary Round - Group B



Match Team Statistics

Match No. 29

**Denmark 24 - 15 Egypt**

(11 - 10) (13 - 5)

10.8.2018. 12:00

Attendance:

Hall Legionow

Referees: Fadel Diop (SEN) / Abdoulaye Faye (SEN)

## Shot distribution by player

### 2 S. Gamys

|     |     |     |
|-----|-----|-----|
| 0/1 | 0/1 |     |
|     |     |     |
| 1/1 |     | 1/1 |

1/1 lob

### 3 F. Hedegaard

|  |     |  |
|--|-----|--|
|  | 1/1 |  |
|  |     |  |
|  | 0/2 |  |

### 4 M. Klostermann

|  |  |  |
|--|--|--|
|  |  |  |
|  |  |  |
|  |  |  |

### 5 E. Theil

|     |  |  |
|-----|--|--|
|     |  |  |
| 1/1 |  |  |
| 0/1 |  |  |

### 6 N. Frokjaer-Jensen

|  |  |  |
|--|--|--|
|  |  |  |
|  |  |  |
|  |  |  |

### 7 E. Steffensen

|     |  |     |
|-----|--|-----|
| 0/1 |  |     |
|     |  | 1/1 |
| 1/1 |  | 1/1 |

1 post 1 miss.

### 8 E. Laursen

|     |     |     |
|-----|-----|-----|
| 1/1 |     |     |
| 0/1 | 0/1 | 1/1 |
| 1/1 |     |     |

1 block

### 9 M. Moller

|     |  |     |
|-----|--|-----|
| 2/2 |  | 1/1 |
|     |  |     |
|     |  | 1/1 |

2 post 2 miss.

### 13 C. Hansen

|  |  |  |
|--|--|--|
|  |  |  |
|  |  |  |
|  |  |  |

1 miss.

### 14 A. Wierzba

|  |  |  |
|--|--|--|
|  |  |  |
|  |  |  |
|  |  |  |

1 miss.

### 17 C. Faarhoff

|  |  |     |
|--|--|-----|
|  |  | 1/1 |
|  |  | 1/1 |
|  |  |     |

2 post

### 21 A. Hansen

|     |  |     |
|-----|--|-----|
|     |  | 1/1 |
|     |  | 0/1 |
| 1/1 |  | 1/1 |

1/1 lob

### 24 E. Halilcevic

|     |  |     |
|-----|--|-----|
| 1/1 |  | 1/1 |
| 0/1 |  | 1/1 |
|     |  |     |

2 post

### TOTAL

|     |     |     |
|-----|-----|-----|
| 4/6 | 1/2 | 4/4 |
| 1/3 | 0/1 | 4/5 |
| 4/5 | 0/2 | 4/4 |

7 post 5 miss. 1 block 2/2 lob

## Saves distribution goalkeepers

### 1 L. Askvist

|     |     |     |
|-----|-----|-----|
| 0/2 |     | 2/4 |
|     | 2/3 | 0/2 |
| 0/3 | 1/2 | 3/4 |

### 12 A. Kristensen

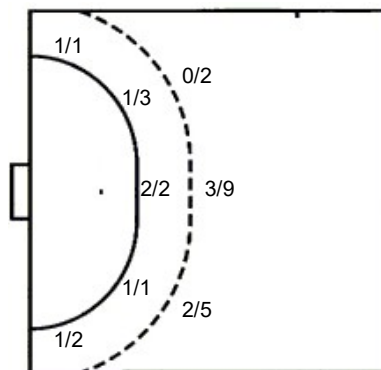
|     |     |     |
|-----|-----|-----|
| 1/1 |     |     |
| 2/2 | 0/1 | 1/1 |
| 1/2 | 1/1 | 1/2 |

### TOTAL

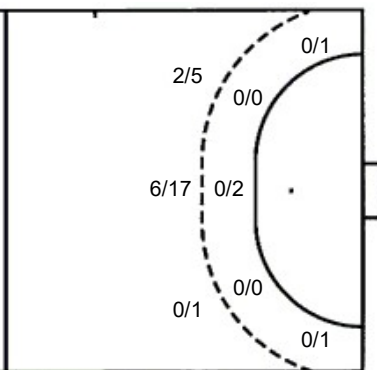
|     |     |     |
|-----|-----|-----|
| 1/3 |     | 2/4 |
| 2/2 | 2/4 | 1/3 |
| 1/5 | 2/3 | 4/6 |

## Shots by position

### ATTACK



### DEFENSE



7m penalties 5/7  
Fastbreak 7/12  
Breakthrough 1/2  
Long dist. 0/1

7m penalties 4/6  
Fastbreak 1/1  
Breakthrough 1/2  
Long dist. 1/3

## Shooting statistics

| Position     | Goals     | Sav.      | Miss.    | Post     | Bik.     | Total     | %         |
|--------------|-----------|-----------|----------|----------|----------|-----------|-----------|
| Back (9m)    | 5         | 2         | 4        | 4        | 1        | 16        | 31        |
| Line (6m)    | 4         | 2         | 0        | 0        | 0        | 6         | 67        |
| Wing         | 2         | 1         | 0        | 0        | 0        | 3         | 67        |
| 7m penalties | 5         | 0         | 0        | 2        | 0        | 7         | 71        |
| Fastbreak    | 7         | 4         | 0        | 1        | 0        | 12        | 58        |
| Breakthrough | 1         | 1         | 0        | 0        | 0        | 2         | 50        |
| <b>Total</b> | <b>24</b> | <b>10</b> | <b>4</b> | <b>7</b> | <b>1</b> | <b>46</b> | <b>52</b> |

# Jersey number Tot. Total shooting 6m 6m (line) shooting 9m 9m shooting Wng. Wing shooting FB Fastbreak sh. 7m 7m penalty sh.  
Brk. Breakthrough sh. LD Long distance sh. As. Assists E7 Earned 7m pen. TF Technical Faults St. Steals 2m 2m punishments  
C7. Committed 7m E2 Earned 2m pun. YC. Yellow cards RC Red cards BC Blue cards Blk. Blocks S Starting Line-up



# IHF Women's Youth (U18) World Championship

## Poland (Kielce)

### Preliminary Round - Group B



Match Team Statistics

Match No. 29

## Denmark 24 - 15 Egypt

(11 - 10) (13 - 5)

10.8.2018. 12:00

Attendance:

Hall Legionow

Referees: Fadel Diop (SEN) / Abdoulaye Faye (SEN)

### Egypt

| #  | Surname and name                 | S | Goals / shots |    |      |     |      |     |     |      | Attack |     |    |    | Def. |     |    | Penalties |    |    | TP |    |    |   |   |       |       |
|----|----------------------------------|---|---------------|----|------|-----|------|-----|-----|------|--------|-----|----|----|------|-----|----|-----------|----|----|----|----|----|---|---|-------|-------|
|    |                                  |   | Tot.          | %  | 9m   | 6m  | Wing | 7m  | FB  | Brk. | LD     | As. | E7 | E2 | TF   | St. | C7 | Blk       | YC | 2m |    | RC | BC |   |   |       |       |
| 5  | ESLAM ZAKI AHMED Alaa            |   | 0/4           | 0  | 0/3  |     |      |     |     |      |        |     |    |    |      |     |    |           |    |    |    |    |    |   |   |       | 28:17 |
| 7  | KASSEM IBRAHEM KASSEM Sandy      | S |               |    |      |     |      |     |     |      |        |     |    |    |      |     |    |           |    |    |    |    |    |   |   |       | 7:38  |
| 8  | AHMED MOUSSA ELSHAWARBY Shahd    |   | 1/3           | 33 |      | 0/1 |      |     |     |      |        |     |    |    |      |     |    |           |    |    |    |    |    |   | 3 |       | 19:16 |
| 10 | REFAT KAMAL REFAIE Samira        |   | 1/2           | 50 | 0/1  |     |      |     |     |      |        |     |    |    | 1    | 2   | 2  |           |    |    |    |    |    |   |   |       | 31:29 |
| 11 | TAREK MORSY KHEDR Aya            | S | 1/2           | 50 | 1/2  |     |      |     |     |      |        |     |    |    | 1    | 3   |    |           |    |    |    |    |    | 1 | 1 | 51:43 |       |
| 14 | HANY MAHMOUD MABROUK Farida      |   | 0/1           | 0  |      |     | 0/1  |     |     |      |        |     |    |    |      | 2   |    |           |    |    |    |    |    |   |   |       | 7:30  |
| 16 | USAMA ABDELFAH EL SHAZLY Farah   | S |               |    |      |     |      |     |     |      |        |     |    |    |      |     |    |           |    |    |    |    |    |   |   |       | 58:02 |
| 20 | MOHAMED RADY AHMED Rana          | S | 6/12          | 50 | 5/10 |     |      |     | 1/2 |      |        |     |    |    |      | 4   |    |           |    |    |    |    |    |   |   |       | 55:59 |
| 22 | SALAH ELSAYED HASSANEIN Yara     |   |               |    |      |     |      |     |     |      |        |     |    |    |      |     |    |           |    |    |    |    |    |   |   |       |       |
| 23 | HAITHAM HAMMAD ZAKI Laila        |   | 0/1           | 0  |      | 0/1 |      |     |     |      |        |     |    |    | 2    | 1   |    |           |    |    |    |    |    |   | 1 |       | 34:56 |
| 55 | ABDELRAZEK ALI EID ALI Salma     | S | 1/2           | 50 |      |     | 0/1  |     |     | 1/1  |        |     |    |    |      | 2   | 3  | 1         |    |    |    |    |    |   |   |       | 50:45 |
| 66 | EMADALDIEN MOHAMED OSMAN Yassmen | S |               |    |      |     |      |     |     |      |        |     |    |    | 1    |     | 1  | 1         |    |    |    |    |    |   | 1 |       | 25:00 |
| 72 | OSAMA EBEID ABDALLA Lara         |   |               |    |      |     |      |     |     |      |        |     |    |    |      |     |    |           |    |    |    |    |    |   |   |       | 0:35  |
| 89 | MAMDOU MOHAMED MAHMOUD Nada      | S | 3/8           | 38 | 2/5  |     |      |     | 1/2 |      |        |     |    |    | 1    |     | 2  |           |    |    |    |    |    | 1 |   |       | 18:40 |
| 91 | MOHAMED GOUDA WAHDAN Habiba      |   |               |    |      |     |      |     |     |      |        |     |    |    |      |     |    |           |    |    |    |    |    |   |   |       | 6:34  |
| 96 | KHALED FATHY AHMED Sohaila       |   | 2/4           | 50 | 0/2  |     |      |     | 2/2 |      |        |     |    |    | 1    | 1   | 1  | 1         |    |    |    |    |    |   |   |       | 23:36 |
|    | Team / bench                     |   |               |    |      |     |      |     |     |      |        |     |    |    |      |     |    |           |    |    |    |    |    |   |   | 1     |       |
|    | UKUPNO                           |   | 15/39         | 38 | 8/23 | 0/2 | 0/2  | 4/6 | 1/1 | 1/2  | 1/3    | 0   | 6  | 5  | 19   | 5   | 7  | 1         | 1  | 7  | 0  | 0  |    |   |   |       |       |

| #  | Surname and name               | Saves / shots |    |     |     |      |     |      |      |     |
|----|--------------------------------|---------------|----|-----|-----|------|-----|------|------|-----|
|    |                                | Tot.          | %  | 9m  | 6m  | Wing | 7m  | FB   | Brk. | LD  |
| 16 | USAMA ABDELFAH EL SHAZLY Farah | 10/32         | 31 | 2/7 | 2/6 | 1/3  | 0/3 | 4/11 | 1/2  |     |
| 72 | OSAMA EBEID ABDALLA Lara       | 0/2           | 0  |     |     |      | 0/2 |      |      |     |
|    | TOTAL                          | 10/34         | 29 | 2/7 | 2/6 | 1/3  | 0/5 | 4/11 | 1/2  | 0/0 |

Coach: Ashraf Saleh Aly Shemis

Number of attacks: 55, Efficiency: 27%, Average Duration: 35,2 seconds

### Attack by type of defense

|             | Shots | 9m   | 6m  | Wing | TF | E7 | E2 |
|-------------|-------|------|-----|------|----|----|----|
| On def. 6-0 | 9/29  | 8/23 | 0/2 | 0/2  | 19 | 6  | 5  |
| Fastbreak   | 1/1   |      |     |      | 0  | 0  | 0  |

### Defense by type

|           | Total | 9m   | 6m  | Wing | Stl. | C7 | 2m |
|-----------|-------|------|-----|------|------|----|----|
| Def. 6-0  | 12/27 | 5/16 | 4/6 | 2/3  | 5    | 7  | 7  |
| Fastbreak | 7/12  |      |     |      | 0    | 0  | 0  |

### Attack with goalkeeper out

|       | Attack |      |       |    | Reaction |     |      |
|-------|--------|------|-------|----|----------|-----|------|
|       | Att.   | Eff. | Shots | TF | FB       | LD  | Tot. |
| GK in | 55     | 27%  | 15/38 | 19 | 7/12     | 0/1 | 7/13 |

GK out attack is counted if one part or whole attack was GK out

### Defense with opponent goalkeeper out

|       | Attack |      |       |    | Reaction |     |      |
|-------|--------|------|-------|----|----------|-----|------|
|       | Att.   | Eff. | Shots | TF | FB       | LD  | Tot. |
| GK in | 51     | 45%  | 23/45 | 12 | 0/0      | 0/2 | 0/2  |

### Attack with player superiority/minority

|                | Attack |      |       |    | Reaction |     |      |
|----------------|--------|------|-------|----|----------|-----|------|
|                | Att.   | Eff. | Shots | TF | FB       | LD  | Tot. |
| Superiority +1 | 11     | 55%  | 6/10  | 1  | 0/0      | 0/0 | 0/0  |
| Normal         | 33     | 15%  | 5/19  | 14 | 5/10     | 0/1 | 5/11 |
| Minority -1    | 9      | 33%  | 3/9   | 3  | 2/2      | 0/0 | 2/2  |

Player superiority counted at the end of attack (in case it changes during attack)

### Defense with player superiority/minority

|                | Attack |      |       |    | Reaction |     |      |
|----------------|--------|------|-------|----|----------|-----|------|
|                | Att.   | Eff. | Shots | TF | FB       | LD  | Tot. |
| Minority -1    | 13     | 46%  | 6/10  | 3  | 0/0      | 0/0 | 0/0  |
| Normal         | 31     | 39%  | 12/30 | 7  | 0/0      | 0/0 | 0/0  |
| Superiority +1 | 10     | 60%  | 6/7   | 3  | 1/1      | 1/3 | 2/4  |

# Jersey number Tot. Total shooting 6m 6m (line) shooting 9m 9m shooting Wng. Wing shooting FB Fastbreak sh. 7m 7m penalty sh.  
 Brk. Breakthrough sh. LD Long distance sh. As. Assists E7 Earned 7m pen. TF Technical Faults St. Steals 2m 2m punishments  
 C7. Committed 7m E2 Earned 2m pun. YC. Yellow cards RC Red cards BC Blue cards Blk. Blocks S Starting Line-up



# IHF Women's Youth (U18) World Championship

Poland (Kielce)

Preliminary Round - Group B



Match Team Statistics

Match No. 29

## Denmark 24 - 15 Egypt

(11 - 10) (13 - 5)

10.8.2018. 12:00

Attendance:

Hall Legionow

Referees: Fadel Diop (SEN) / Abdoulaye Faye (SEN)

### Shot distribution by player

5 A. Eslam Zaki  
Ahmed

|  |     |     |
|--|-----|-----|
|  |     |     |
|  |     |     |
|  | 0/1 | 0/2 |

1 post

7 S. Kassem Ibrahim  
Kassem

|  |  |  |
|--|--|--|
|  |  |  |
|  |  |  |
|  |  |  |

8 S. Ahmed Moussa  
Elshawarby

|  |     |     |
|--|-----|-----|
|  |     | 0/1 |
|  | 1/1 |     |
|  |     |     |

1 miss.

10 S. Refat Kamal  
Refaie

|     |  |  |
|-----|--|--|
|     |  |  |
|     |  |  |
| 1/1 |  |  |

1 block

11 A. Tarek Morsy  
Khedr

|  |     |  |
|--|-----|--|
|  |     |  |
|  |     |  |
|  | 1/1 |  |

1 block

14 F. Hany Mahmoud  
Mabrouk

|     |  |  |
|-----|--|--|
|     |  |  |
|     |  |  |
| 0/1 |  |  |

1 block

20 R. Mohamed Rady  
Ahmed

|     |     |     |
|-----|-----|-----|
| 1/2 |     | 2/3 |
|     | 0/1 |     |
| 1/2 | 1/1 | 1/1 |

2 block

22 Y. Salah Elsayed  
Hassanein

|  |  |  |
|--|--|--|
|  |  |  |
|  |  |  |
|  |  |  |

23 L. Haitham  
Hammad Zaki

|  |  |     |
|--|--|-----|
|  |  |     |
|  |  | 0/1 |
|  |  |     |

55 S. Abdelrazek Ali  
Eid Ali

|  |     |  |
|--|-----|--|
|  |     |  |
|  | 1/1 |  |
|  | 0/1 |  |

66 Y. Emadaldien  
Mohamed Osman

|  |  |  |
|--|--|--|
|  |  |  |
|  |  |  |
|  |  |  |

89 N. Mamdou  
Mohamed Mahmoud

|     |     |     |
|-----|-----|-----|
|     |     |     |
| 0/1 | 0/1 |     |
| 2/2 |     | 1/3 |

1 miss.

91 H. Mohamed Gouda  
Wahdan

|  |  |  |
|--|--|--|
|  |  |  |
|  |  |  |
|  |  |  |

96 S. Khaled Fathy  
Ahmed

|     |  |     |
|-----|--|-----|
| 1/1 |  |     |
|     |  |     |
|     |  | 1/1 |

2 block

### TOTAL

|     |     |     |
|-----|-----|-----|
| 2/3 |     | 2/4 |
| 0/2 | 2/4 | 2/3 |
| 4/5 | 1/3 | 2/6 |

1 post 2 miss. 6 block

### Saves distribution goalkeepers

16 F. Usama  
Abdelfatah  
Elshazly

|     |     |     |
|-----|-----|-----|
| 2/5 | 1/2 | 0/4 |
| 2/3 | 1/1 | 1/5 |
| 1/5 | 2/2 | 0/3 |

72 L. Osama  
Ebeid Abdalla

|     |  |     |
|-----|--|-----|
| 0/1 |  |     |
|     |  |     |
|     |  | 0/1 |

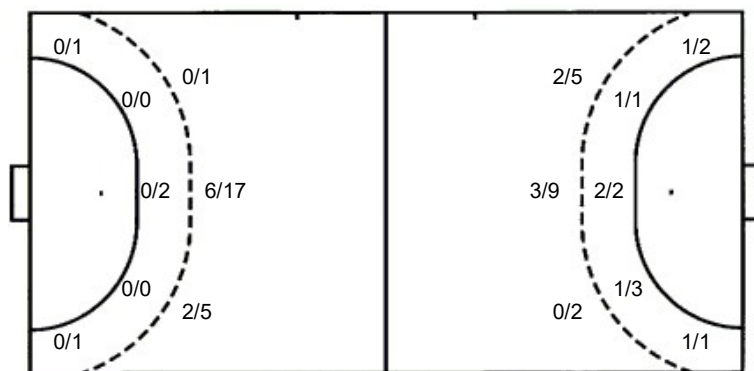
### TOTAL

|     |     |     |
|-----|-----|-----|
| 2/6 | 1/2 | 0/4 |
| 2/3 | 1/1 | 1/5 |
| 1/5 | 2/2 | 0/4 |

### Shots by position

ATTACK

DEFENSE



7m penalties 4/6

Fastbreak 1/1

Breakthrough 1/2

Long dist. 1/3

7m penalties 5/7

Fastbreak 7/12

Breakthrough 1/2

Long dist. 0/1

### Shooting statistics

| Position     | Goals     | Sav.      | Miss.    | Post     | Bik.     | Total     | %         |
|--------------|-----------|-----------|----------|----------|----------|-----------|-----------|
| Back (9m)    | 8         | 8         | 1        | 0        | 6        | 23        | 35        |
| Line (6m)    | 0         | 2         | 0        | 0        | 0        | 2         | 0         |
| Wing         | 0         | 2         | 0        | 0        | 0        | 2         | 0         |
| 7m penalties | 4         | 2         | 0        | 0        | 0        | 6         | 67        |
| Fastbreak    | 1         | 0         | 0        | 0        | 0        | 1         | 100       |
| Breakthrough | 1         | 0         | 0        | 1        | 0        | 2         | 50        |
| <b>Total</b> | <b>14</b> | <b>14</b> | <b>1</b> | <b>1</b> | <b>6</b> | <b>36</b> | <b>39</b> |

# Jersey number Tot. Total shooting 6m 6m (line) shooting 9m 9m shooting Wng. Wing shooting FB Fastbreak sh. 7m 7m penalty sh.  
Brk. Breakthrough sh. LD Long distance sh. As. Assists E7 Earned 7m pen. TF Technical Faults St. Steals 2m 2m punishments  
C7. Committed 7m E2 Earned 2m pun. YC. Yellow cards RC Red cards BC Blue cards Blk. Blocks S Starting Line-up