



# IHF Women's Youth (U18) World Championship

## Poland (Kielce)

### Preliminary Round - Group A



Match Team Statistics

Match No. 20

## Slovakia 26 - 29 Poland

(13 - 13) (13 - 16)

9.8.2018. 18:00

Attendance: 2200

Hall Legionow

Referees: Alexei Covalciuc (MDA) / Igor Covalciuc (MDA)

### Slovakia

#	Surname and name	S	Goals / shots								Attack				Def.			Penalties			TP							
			Tot.	%	9m	6m	Wing	7m	FB	Brk.	LD	As.	E7	E2	TF	St.	C7	Blk	YC	2m		RC	BC					
2	TREPÁČOVÁ Zuzana	S	8/14	57	1/5				3/4				4/5		1			4		1								59:40
3	MARCINČÁKOVÁ Daniela		0/1	0				0/1																				16:28
5	BELUŠKOVÁ Katarína											1	1				2		1									24:03
8	PASTOREKOVÁ Edina	S	6/14	43	2/9	0/1			1/1	2/2	1/1			1	4	2	6	2	1	1	1	1						41:49
9	MĚSZAROS Réka	S	4/8	50	0/3	1/1			0/1	1/1	2/2					1												28:45
11	RATVAJSKÁ Lenka	S	0/5	0				0/5											1									58:53
12	OPÁTOVÁ Kristína																											
13	CHOVANOVÁ Sidónia																											
14	HOLINCOVÁ Laura																											
17	KAKAŠČIKOVÁ Miriam		3/5	60	2/4								1/1			2			1			2						42:33
18	KOŠOVÁ Nikolett	S	2/2	100				2/2																				43:32
19	MICHÁLKOVÁ Diana	S	2/3	67		2/3													1		1	2						38:44
22	CHUDOVSKÁ Natália	S																										44:13
25	GÁLKOVÁ Zuzana		1/1	100				1/1																				11:23
32	OLÁHOVÁ Bella																											0:14
77	MANCZAL Dóra		0/1	0	0/1																							9:43
	Team / bench																											
	UKUPNO		26/54	48	5/22	3/5	3/9	4/6	3/3	8/9	0/0	2	5	4	12	3	6	2	3	6	0	0						

#	Surname and name	Saves / shots								
		Tot.	%	9m	6m	Wing	7m	FB	Brk.	LD
12	OPÁTOVÁ Kristína									
22	CHUDOVSKÁ Natália	12/38	32	4/13	2/6	2/7	3/4	1/5	0/3	
32	OLÁHOVÁ Bella	1/3	33			1/1	0/2			
	TOTAL	13/41	32	4/13	2/6	3/8	3/6	1/5	0/3	0/0

Coach: Rasmus Poulsen

Number of attacks: 56, Efficiency: 46%, Average Duration: 32,7 seconds

### Attack by type of defense

	Shots	9m	6m	Wing	TF	E7	E2
On def. 6-0	8/17	2/8	1/2	2/3	2	5	4
On def. 5-1	11/26	3/13	2/3	1/5	10	0	0
On def. 3-3	0/2	0/1	0/0	0/1	0	0	0
Fastbreak	3/3				0	0	0

### Defense by type

	Total	9m	6m	Wing	Stl.	C7	2m
Def. 6-0	21/38	9/18	4/7	5/9	1	5	4
Def. 5-1	0/2	0/2	0/0	0/0	2	0	2
Def. 3-3	0/0	0/0	0/0	0/0	0	1	0
Fastbreak	4/7				0	0	0

### Attack with goalkeeper out

	Attack				Reaction		
	Att.	Eff.	Shots	TF	FB	LD	Tot.
GK out (7 on 6)	1	0%	0/0	0	0/0	0/0	0/0
GK out pl. minority	1	0%	0/1	0	0/0	0/0	0/0
GK in	54	48%	26/53	12	4/7	1/1	5/8

GK out attack is counted if one part or whole attack was GK out

### Attack with player superiority/minority

	Attack				Reaction		
	Att.	Eff.	Shots	TF	FB	LD	Tot.
Superiority +1	8	100%	8/10	1	1/1	0/0	1/1
Normal	27	41%	11/26	7	2/3	0/0	2/3
Minority -1	7	29%	2/6	2	0/0	1/1	1/1
Minority -2	1	0%	0/1	0	0/0	0/0	0/0

Player superiority counted at the end of attack (in case it changes during attack)

### Defense with opponent goalkeeper out

	Attack				Reaction		
	Att.	Eff.	Shots	TF	FB	LD	Tot.
GK out (7 on 6)	0	0%	0/0	1	0/0	0/0	0/0
GK out pl. super.	0	0%	0/0	0	0/0	0/0	0/0
GK in	57	51%	29/54	10	3/3	0/0	3/3

### Defense with player superiority/minority

	Attack				Reaction		
	Att.	Eff.	Shots	TF	FB	LD	Tot.
Minority -2	1	100%	1/1	0	0/0	0/0	0/0
Minority -1	7	71%	5/7	1	0/0	0/0	0/0
Normal	25	52%	13/27	6	1/1	0/0	1/1
Superiority +1	11	27%	3/7	2	2/2	0/0	2/2

# Jersey number    Tot. Total shooting    6m 6m (line) shooting    9m 9m shooting    Wng Wing shooting    FB Fastbreak sh.    7m 7m penalty sh.  
 Brk. Breakthrough sh.    LD Long distance sh.    As. Assists    E7 Earned 7m pen.    TF Technical Faults    St. Steals    2m 2m punishments  
 C7. Committed 7m    E2 Earned 2m pun.    YC. Yellow cards    RC Red cards    BC Blue cards    Blk. Blocks    S Starting Line-up



# IHF Women's Youth (U18) World Championship

Poland (Kielce)

Preliminary Round - Group A



Match Team Statistics

Match No. 20

**Slovakia 26 - 29 Poland**

(13 - 13) (13 - 16)

9.8.2018. 18:00

Attendance: 2200

Hall Legionow

Referees: Alexei Covalciuc (MDA) / Igor Covalciuc (MDA)

## Shot distribution by player

2 Z. Trepáčová

		0/1
1/1		3/7
4/4		

1 miss.

3 D. Marcinčáková

		0/1

5 K. Belušková


8 E. Pastoreková

1/1	1/1	0/1
2/2	0/3	2/4

1 miss. 1 block

9 R. Mészáros

0/1		3/5
	1/1	

1 miss.

11 L. Ratvajská

0/1	0/1	
	0/1	

2 post

13 S. Chovanová


14 L. Holincová


17 M. Kakaščíková

2/2		1/1

1 post 1 miss.

18 N. Kóšová

		1/1
		1/1

19 D. Micháľková

2/2		

1 post

25 Z. Galková

1/1		

77 D. Manczal


1 miss.

**TOTAL**

1/2	1/2	0/2
3/4	0/4	9/17
9/9	1/1	2/3

4 post 5 miss. 1 block

## Saves distribution goalkeepers

12 K. Opátová


22 N. Chudovská

0/1	1/2	2/7
3/9	2/2	0/1
0/5	3/3	1/8

32 B. Oláhová

		0/2
	1/1	

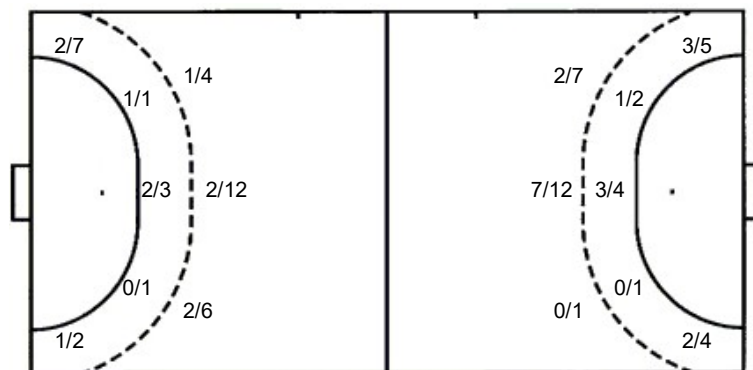
**TOTAL**

0/1	1/2	2/7
3/9	2/2	0/3
0/5	4/4	1/8

## Shots by position

ATTACK

DEFENSE



7m penalties 4/6  
Fastbreak 3/3  
Breakthrough 8/9  
Long dist. 0/0

7m penalties 3/6  
Fastbreak 4/7  
Breakthrough 3/4  
Long dist. 1/1

## Shooting statistics

Position	Goals	Sav.	Miss.	Post	Blk.	Total	%
Back (9m)	5	10	5	1	1	22	23
Line (6m)	3	1	0	1	0	5	60
Wing	3	4	0	2	0	9	33
7m penalties	4	2	0	0	0	6	67
Fastbreak	3	0	0	0	0	3	100
Breakthrough	8	1	0	0	0	9	89
<b>Total</b>	<b>26</b>	<b>18</b>	<b>5</b>	<b>4</b>	<b>1</b>	<b>54</b>	<b>48</b>

# Jersey number Tot. Total shooting 6m 6m (line) shooting 9m 9m shooting Wng. Wing shooting FB Fastbreak sh. 7m 7m penalty sh.  
Brk. Breakthrough sh. LD Long distance sh. As. Assists E7 Earned 7m pen. TF Technical Faults St. Steals 2m 2m punishments  
C7. Committed 7m E2 Earned 2m pun. YC. Yellow cards RC Red cards BC Blue cards Blk. Blocks S Starting Line-up



# IHF Women's Youth (U18) World Championship

Poland (Kielce)

Preliminary Round - Group A



Match Team Statistics

Match No. 20

## Slovakia 26 - 29 Poland

(13 - 13) (13 - 16)

9.8.2018. 18:00

Attendance: 2200

Hall Legionow

Referees: Alexei Covalciuc (MDA) / Igor Covalciuc (MDA)

### Poland

Igraei		Goals / shots										Attack				Def.			Penalties			TP		
#	Surname and name	S	Tot.	%	9m	6m	Wing	7m	FB	Brk.	LD	As.	E7	E2	TF	St.	C7	Blk	YC	2m	RC	BC		
1	WDOWIAK Paulina																							
2	OLEK Aleksandra	S	3/3	100		3/3							3							1		1		60:00
4	CYGAN Katarzyna		3/6	50	0/2			3/4							2			1						37:44
5	STANISŁAWCZYK Kinga											2	1	3	3	1						1		44:31
7	SOBECKA Lucyna	S	3/7	43	0/2			0/1	1/1	2/3		2			1		2					1		60:00
8	WIĘCKOWSKA Magda	S	10/17	59	9/16	1/1						2	1	2	3		1					1		37:38
10	ZAGRAJEK Julia																							
11	HARIC Gabriela																							
12	CHODAKOWSKA Marta	S																						0:32
13	SZCZEPANIK Nikola	S	3/7	43		0/2	2/3	0/1	1/1								1					1		30:02
14	DWORNICZUK Julia																1					1		12:39
15	BURY Nadia																							
16	ZIMA Barbara	S	1/1	100							1/1	2			1									59:40
20	BOROWSKA Dominika																							
23	PIETRAS Julia	S	4/10	40		0/1	3/5		0/3	1/1			1	1		2								47:14
24	KOWALIK Emilia		2/3	67			0/1		2/2						1	1								30:00
	Team / bench																							
	UKUPNO		29/54	54	9/20	4/7	5/9	3/6	4/7	3/4	1/1	8	6	6	11	4	5	1	2	4	1	0		

Goalkeepers		Saves / shots									
#	Surname and name	Tot.	%	9m	6m	Wing	7m	FB	Brk.	LD	
1	WDOWIAK Paulina										
12	CHODAKOWSKA Marta	1/2	50				1/2				
16	ZIMA Barbara	17/42	40	10/15	1/4	4/7	1/4	0/3	1/9		
	TOTAL	18/44	41	10/15	1/4	4/7	2/6	1/3	1/9	0/0	

Coach: Agnieszka Truszyńska

Number of attacks: 57, Efficiency: 51%, Average Duration: 31,0 seconds

### Attack by type of defense

	Shots	9m	6m	Wing	TF	E7	E2
On def. 6-0	21/38	9/18	4/7	5/9	9	5	4
On def. 5-1	0/2	0/2	0/0	0/0	1	0	2
On def. 3-3	0/0	0/0	0/0	0/0	1	1	0
Fastbreak	4/7				0	0	0

### Defense by type

	Total	9m	6m	Wing	Stl.	C7	2m
Def. 6-0	8/17	2/8	1/2	2/3	4	5	4
Def. 5-1	11/26	3/13	2/3	1/5	0	0	0
Def. 3-3	0/2	0/1	0/0	0/1	0	0	0
Fastbreak	3/3				0	0	0

### Attack with goalkeeper out

	Attack				Reaction			
	Att.	Eff.	Shots	TF	FB	LD	Tot.	
GK in	57	51%	29/54	10	3/3	0/0	3/3	

GK out attack is counted if one part or whole attack was GK out

### Attack with player superiority/minority

	Attack				Reaction			
	Att.	Eff.	Shots	TF	FB	LD	Tot.	
Superiority +2	1	100%	1/1	0	0/0	0/0	0/0	
Superiority +1	7	71%	5/7	1	0/0	0/0	0/0	
Normal	25	52%	13/27	6	1/1	0/0	1/1	
Minority -1	11	27%	3/7	2	2/2	0/0	2/2	

Player superiority counted at the end of attack (in case it changes during attack)

### Defense with opponent goalkeeper out

	Attack				Reaction			
	Att.	Eff.	Shots	TF	FB	LD	Tot.	
GK in	54	48%	26/53	12	4/7	1/1	5/8	

### Defense with player superiority/minority

	Attack				Reaction			
	Att.	Eff.	Shots	TF	FB	LD	Tot.	
Minority -1	8	100%	8/10	1	1/1	0/0	1/1	
Normal	27	41%	11/26	7	2/3	0/0	2/3	
Superiority +1	7	29%	2/6	2	0/0	1/1	1/1	
Superiority +2	1	0%	0/1	0	0/0	0/0	0/0	

# Jersey number Tot. Total shooting 6m 6m (line) shooting 9m 9m shooting Wng Wing shooting FB Fastbreak sh. 7m 7m penalty sh.  
 Brk. Breakthrough sh. LD Long distance sh. As. Assists E7 Earned 7m pen. TF Technical Faults St. Steals 2m 2m punishments  
 C7. Committed 7m E2 Earned 2m pun. YC. Yellow cards RC Red cards BC Blue cards Blk. Blocks S Starting Line-up



# IHF Women's Youth (U18) World Championship

Poland (Kielce)

Preliminary Round - Group A



Match Team Statistics

Match No. 20

**Slovakia 26 - 29 Poland**

(13 - 13) (13 - 16)

9.8.2018. 18:00

Attendance: 2200

Hall Legionow

Referees: Alexei Covalciuc (MDA) / Igor Covalciuc (MDA)

## Shot distribution by player

**2 A. Olek**

		2/2
		1/1

**4 K. Cygan**

		1/2
		2/2

2 post

**5 K. Stanisławczyk**


**7 L. Sobocka**

	0/1	1/1
		2/3

1 post 1 miss.

**8 M. Więckowska**

1/1	1/1	1/1
5/7	0/1	
2/2		

1 post 1 miss. 2 block

**10 J. Zagrajek**


**11 G. Haric**


**13 N. Szczepanik**

	0/1	
1/1	0/1	2/2

1 post 1 miss.

**14 J. Dworniczuk**


**15 N. Bury**


**20 D. Borowska**


**23 J. Pietras**

		1/2
0/1		
	0/2	2/2

2 post 1/1 lob

**24 E. Kowalik**

2/2	0/1	

**TOTAL**

1/1	1/2	5/7
5/8	0/2	3/3
5/5	0/4	7/8

7 post 3 miss. 2 block 1/1 lob

## Saves distribution goalkeepers

**1 P. Wdowiak**


**12 M. Chodakowska**

0/1		1/1

**16 B. Zima**

1/2	1/2	2/2
1/3	4/4	7/16
0/9	0/1	1/3

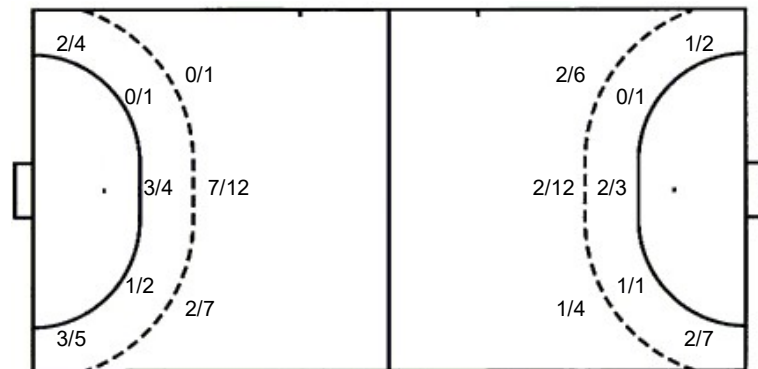
**TOTAL**

1/2	1/2	2/2
1/4	4/4	8/17
0/9	0/1	1/3

## Shots by position

ATTACK

DEFENSE



7m penalties 3/6

Fastbreak 4/7

Breakthrough 3/4

Long dist. 1/1

7m penalties 4/6

Fastbreak 3/3

Breakthrough 8/9

Long dist. 0/0

## Shooting statistics

Position	Goals	Sav.	Miss.	Post	Blk.	Total	%
Back (9m)	9	4	1	4	2	20	45
Line (6m)	4	2	0	1	0	7	57
Wing	5	3	1	0	0	9	56
7m penalties	3	3	0	0	0	6	50
Fastbreak	4	1	0	2	0	7	57
Breakthrough	3	0	1	0	0	4	75
<b>Total</b>	<b>28</b>	<b>13</b>	<b>3</b>	<b>7</b>	<b>2</b>	<b>53</b>	<b>53</b>

# Jersey number Tot. Total shooting 6m 6m (line) shooting 9m 9m shooting Wng. Wing shooting FB Fastbreak sh. 7m 7m penalty sh.  
 Brk. Breakthrough sh. LD Long distance sh. As. Assists E7 Earned 7m pen. TF Technical Faults St. Steals 2m 2m punishments  
 C7. Committed 7m E2 Earned 2m pun. YC. Yellow cards RC Red cards BC Blue cards Blk. Blocks S Starting Line-up