



IHF Women's Youth (U18) World Championship

Poland (Kielce)

Preliminary Round - Group A



Match Team Statistics

Match No. 19

Austria 19 - 37 Romania

(8 - 21) (11 - 16)

9.8.2018. 16:00

Attendance: 200

Hall Legionow

Referees: Viktoriia Alpaidze (RUS) / Tatiana Berezkina (RUS)

Austria

| # | Surname and name | S | Goals / shots | | | | | | | | Attack | | | | Def. | | | Penalties | | | TP | | |
|----|---------------------|---|---------------|----|------|-----|------|-----|-----|------|--------|-----|----|----|------|-----|----|-----------|----|----|----|----|-------|
| | | | Tot. | % | 9m | 6m | Wing | 7m | FB | Brk. | LD | As. | E7 | E2 | TF | St. | C7 | Blk | YC | 2m | | RC | BC |
| 1 | IVANCOK Lena | S | | | | | | | | | | | | | | | | | | | | | 30:00 |
| 2 | MARTINOVIC Kristina | S | 0/1 | 0 | | | | | | 0/1 | | | | | 2 | 2 | | | 2 | | | 2 | 23:14 |
| 6 | FEHRINGER Lilly | | 1/6 | 17 | 1/2 | 0/1 | 0/1 | | | 0/2 | | | | 1 | | 2 | 1 | | 1 | | | 1 | 34:22 |
| 7 | NEIDHART Nina | S | 7/9 | 78 | 1/2 | | 1/2 | 5/5 | | | | | | | | | | 1 | | | | | 33:52 |
| 8 | DRAGULJIC Sarah | | 2/3 | 67 | | 2/3 | | | | | | | | | 1 | | | 2 | 1 | 2 | | | 27:52 |
| 9 | REICHERT Johanna | | 1/2 | 50 | 0/1 | 1/1 | | | | | | | | 1 | 1 | | | | | | | | 14:29 |
| 10 | KOFLER Lea | S | 1/2 | 50 | 1/2 | | | | | | | | | | 2 | | | 1 | | | | 1 | 38:25 |
| 11 | DRAMAC Kristina | | 2/10 | 20 | 2/8 | | 0/1 | 0/1 | | | | | | | | 2 | | | 4 | | | | 45:02 |
| 13 | SPALT Lisa | S | 1/4 | 25 | | 1/4 | | | | | | | | | | | | | | | | | 43:20 |
| 15 | PANDZA Katarina | S | 2/5 | 40 | 1/4 | | | | | | | | | | | 1 | | 2 | | | | | 25:00 |
| 16 | KRENN Lea | | | | | | | | | | | | | | | | | | | | | | 30:00 |
| 18 | MARKSTEINER Adriana | | 0/1 | 0 | | | | | | 0/1 | | | | | 1 | 1 | 2 | | 1 | | | 1 | 25:47 |
| 20 | MATOSEVIC Annabella | | 0/1 | 0 | 0/1 | | | | | | | | | 1 | | | | 1 | | | | | 11:47 |
| 23 | KERESTELY Beatrix | | 1/3 | 33 | 1/3 | | | | | | | | | | | | | | | | | | 13:49 |
| 24 | SCHLEGEL Klara | S | 1/3 | 33 | 1/3 | | | | | | | | | | | 2 | | 1 | | | 1 | | 23:01 |
| | Team / bench | | | | | | | | | | | | | | | | | | | | | | |
| | UKUPNO | | 19/50 | 38 | 8/26 | 3/5 | 2/8 | 5/6 | 0/3 | 1/2 | 0/0 | 3 | 5 | 7 | 10 | 2 | 11 | 4 | 1 | 5 | 0 | 0 | |

| # | Surname and name | Saves / shots | | | | | | | | |
|----|------------------|---------------|----|------|-----|------|------|-----|------|-----|
| | | Tot. | % | 9m | 6m | Wing | 7m | FB | Brk. | LD |
| 1 | IVANCOK Lena | 5/26 | 19 | 2/6 | 0/3 | 1/2 | 1/8 | 1/4 | 0/3 | |
| 16 | KRENN Lea | 5/21 | 24 | 3/5 | 1/2 | 1/8 | 0/3 | 0/2 | 0/1 | |
| | TOTAL | 10/47 | 21 | 5/11 | 1/5 | 2/10 | 1/11 | 1/6 | 0/4 | 0/0 |

Coach: Helfried Müller

Number of attacks: 54, Efficiency: 35%, Average Duration: 37,7 seconds

Attack by type of defense

| | Shots | 9m | 6m | Wing | TF | E7 | E2 |
|-------------|-------|------|-----|------|----|----|----|
| On def. 6-0 | 13/40 | 8/26 | 2/4 | 2/8 | 10 | 4 | 7 |
| On def. 5-1 | 1/1 | 0/0 | 1/1 | 0/0 | 0 | 1 | 0 |
| Fastbreak | 0/3 | | | | 0 | 0 | 0 |

Defense by type

| | Total | 9m | 6m | Wing | Stl. | C7 | 2m |
|-----------|-------|------|-----|------|------|----|----|
| Def. 6-0 | 12/18 | 4/7 | 3/4 | 2/4 | 1 | 8 | 4 |
| Def. 5-1 | 10/21 | 2/12 | 1/1 | 6/7 | 1 | 3 | 1 |
| Fastbreak | 5/6 | | | | 0 | 0 | 0 |

Attack with goalkeeper out

| | Attack | | | | Reaction | | |
|-------|--------|------|-------|----|----------|-----|------|
| | Att. | Eff. | Shots | TF | FB | LD | Tot. |
| GK in | 54 | 35% | 19/50 | 10 | 5/6 | 0/0 | 5/6 |

GK out attack is counted if one part or whole attack was GK out

Defense with opponent goalkeeper out

| | Attack | | | | Reaction | | |
|-------|--------|------|-------|----|----------|-----|------|
| | Att. | Eff. | Shots | TF | FB | LD | Tot. |
| GK in | 55 | 67% | 37/56 | 6 | 0/3 | 0/0 | 0/3 |

Attack with player superiority/minority

| | Attack | | | | Reaction | | |
|----------------|--------|------|-------|----|----------|-----|------|
| | Att. | Eff. | Shots | TF | FB | LD | Tot. |
| Superiority +1 | 17 | 41% | 7/15 | 2 | 0/0 | 0/0 | 0/0 |
| Normal | 27 | 33% | 9/26 | 7 | 3/3 | 0/0 | 3/3 |
| Minority -1 | 5 | 20% | 1/5 | 0 | 1/2 | 0/0 | 1/2 |

Player superiority counted at the end of attack (in case it changes during attack)

Defense with player superiority/minority

| | Attack | | | | Reaction | | |
|----------------|--------|------|-------|----|----------|-----|------|
| | Att. | Eff. | Shots | TF | FB | LD | Tot. |
| Minority -1 | 6 | 100% | 6/9 | 1 | 0/0 | 0/0 | 0/0 |
| Normal | 31 | 65% | 20/31 | 4 | 0/2 | 0/0 | 0/2 |
| Superiority +1 | 14 | 57% | 8/12 | 1 | 0/1 | 0/0 | 0/1 |

Jersey number Tot. Total shooting 6m 6m (line) shooting 9m 9m shooting Wng Wing shooting FB Fastbreak sh. 7m 7m penalty sh.
 Brk. Breakthrough sh. LD Long distance sh. As. Assists E7 Earned 7m pen. TF Technical Faults St. Steals 2m 2m punishments
 C7. Committed 7m E2 Earned 2m pun. YC. Yellow cards RC Red cards BC Blue cards Blk. Blocks S Starting Line-up



IHF Women's Youth (U18) World Championship

Poland (Kielce)

Preliminary Round - Group A



Match Team Statistics

Match No. 19

Austria 19 - 37 Romania

(8 - 21) (11 - 16)

9.8.2018. 16:00

Attendance: 200

Hall Legionow

Referees: Viktoriia Alpaidze (RUS) / Tatiana Berezkina (RUS)

Shot distribution by player

2 K. Martinovic

| | | |
|--|--|--|
| | | |
| | | |
| | | |

1 post

6 L. Fehringer

| | | |
|-----|-----|--|
| 0/1 | 0/1 | |
| 1/2 | | |
| | | |

2 miss.

7 N. Neidhart

| | | |
|-----|--|-----|
| 0/1 | | |
| 1/2 | | 4/4 |
| 1/1 | | 1/1 |

8 S. Draguljic

| | | |
|--|-----|-----|
| | | 1/1 |
| | | |
| | 1/2 | |

9 J. Reichert

| | | |
|-----|--|-----|
| | | |
| 0/1 | | 1/1 |
| | | |

10 L. Kofler

| | | |
|--|-----|-----|
| | | |
| | 0/1 | 1/1 |
| | | |

11 K. Dramac

| | | |
|-----|-----|-----|
| 1/3 | | 0/1 |
| 1/1 | | 0/1 |
| 0/1 | 0/1 | |

1 post 1 miss.

13 L. Spalt

| | | |
|-----|-----|--|
| | | |
| 1/1 | | |
| | 0/1 | |

1 post 1 miss.

15 K. Pandza

| | | |
|--|--|-----|
| | | 1/1 |
| | | 1/2 |
| | | |

1 post 1 miss.

18 A. Marksteiner

| | | |
|--|--|-----|
| | | |
| | | 0/1 |
| | | |

20 A. Matosevic

| | | |
|--|--|-----|
| | | |
| | | 0/1 |
| | | |

23 B. Kerestely

| | | |
|--|-----|-----|
| | | |
| | 0/1 | 1/1 |
| | | |

1 miss.

24 K. Schlegel

| | | |
|--|-----|-----|
| | | 1/1 |
| | | |
| | 0/1 | |

1 post

TOTAL

| | | |
|-----|-----|------|
| 1/5 | 0/1 | 3/4 |
| 4/7 | 0/2 | 8/12 |
| 1/2 | 1/5 | 1/1 |

5 post 6 miss.

Saves distribution goalkeepers

1 L. Ivancok

| | | |
|-----|-----|------|
| 0/1 | | 0/1 |
| 1/5 | 1/1 | 3/12 |
| 0/4 | | 0/2 |

16 L. Krenn

| | | |
|-----|-----|-----|
| 0/1 | | 0/1 |
| 1/2 | 1/1 | 1/8 |
| 0/2 | 0/2 | 2/4 |

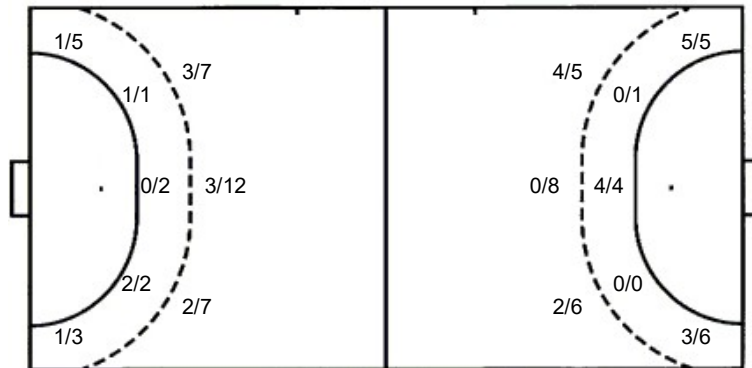
TOTAL

| | | |
|-----|-----|------|
| 0/2 | | 0/2 |
| 2/7 | 2/2 | 4/20 |
| 0/6 | 0/2 | 2/6 |

Shots by position

ATTACK

DEFENSE



7m penalties 5/6

Fastbreak 0/3

Breakthrough 1/2

Long dist. 0/0

7m penalties 10/11

Fastbreak 5/6

Breakthrough 4/4

Long dist. 0/0

Shooting statistics

| Position | Goals | Sav. | Miss. | Post | Blk. | Total | % |
|--------------|-----------|-----------|----------|----------|----------|-----------|-----------|
| Back (9m) | 8 | 11 | 4 | 3 | 0 | 26 | 31 |
| Line (6m) | 3 | 1 | 1 | 0 | 0 | 5 | 60 |
| Wing | 2 | 4 | 1 | 1 | 0 | 8 | 25 |
| 7m penalties | 5 | 1 | 0 | 0 | 0 | 6 | 83 |
| Fastbreak | 0 | 2 | 0 | 1 | 0 | 3 | 0 |
| Breakthrough | 1 | 1 | 0 | 0 | 0 | 2 | 50 |
| Total | 19 | 20 | 6 | 5 | 0 | 50 | 38 |

Jersey number Tot. Total shooting 6m 6m (line) shooting 9m 9m shooting Wng. Wing shooting FB Fastbreak sh. 7m 7m penalty sh.
 Brk. Breakthrough sh. LD Long distance sh. As. Assists E7 Earned 7m pen. TF Technical Faults St. Steals 2m 2m punishments
 C7. Committed 7m E2 Earned 2m pun. YC. Yellow cards RC Red cards BC Blue cards Blk. Blocks S Starting Line-up



IHF Women's Youth (U18) World Championship

Poland (Kielce)

Preliminary Round - Group A



Match Team Statistics

Match No. 19

Austria 19 - 37 Romania

(8 - 21) (11 - 16)

9.8.2018. 16:00

Attendance: 200

Hall Legionow

Referees: Viktoriia Alpaidze (RUS) / Tatiana Berezkina (RUS)

Romania

| # | Surname and name | S | Goals / shots | | | | | | | | Attack | | | | Def. | | | Penalties | | | TP | | | | |
|----|---------------------------|---|---------------|-----|------|-----|------|-------|-----|------|--------|-----|----|----|------|-----|----|-----------|----|----|----|----|----|--|-------|
| | | | Tot. | % | 9m | 6m | Wing | 7m | FB | Brk. | LD | As. | E7 | E2 | TF | St. | C7 | Blk | YC | 2m | | RC | BC | | |
| 1 | CHETRARU Andreea Bianca | | | | | | | | | | | 1 | | | | | | | | | | | | | 23:48 |
| 2 | BALACEANU Ioana Beatrice | | 6/7 | 86 | 1/1 | 1/1 | | 4/5 | | | | 1 | | | | | | | | | | | 1 | | 12:00 |
| 3 | CACE Adina Gabriela | S | 4/7 | 57 | | | 2/5 | 1/1 | 1/1 | | | | 2 | 1 | | | | | | | | | | | 40:47 |
| 6 | COMAN Amalia Mihaela | | 0/2 | 0 | 0/1 | | | | 0/1 | | | | 1 | | | | 2 | | | | | | 3 | | 25:35 |
| 7 | POPA Andreea Cristina | S | 1/2 | 50 | 0/1 | | | | | 1/1 | | 3 | 3 | 1 | | | | | 1 | | | | | | 19:36 |
| 8 | BARABAS Monica Alexandra | | 3/7 | 43 | 1/4 | 0/1 | | 2/2 | | | | 1 | | 1 | 1 | | 1 | | | | | | | | 30:00 |
| 9 | VALCAN Denisa Andreea | | 4/4 | 100 | 1/1 | 1/1 | | 2/2 | | | | | 1 | 1 | | | 1 | | | | | | 1 | | 20:30 |
| 10 | MARIN Iuliana Daniela | | 2/2 | 100 | | 2/2 | | | | | | | | | | | | | | | | | 1 | | 20:18 |
| 11 | TARSOAGA Andreea Rebeca | S | 4/4 | 100 | 2/2 | | | | | 2/2 | | 3 | 1 | | 1 | | | | | | | | | | 24:57 |
| 12 | CIUCA Diana Cristiana | S | | | | | | | | | | | | | | | | | | | | | | | 36:12 |
| 15 | JIPA Stefania Oana | S | | | | | | | | | | | 1 | 1 | 1 | | 1 | | | | | | | | 31:17 |
| 18 | MORARU Patricia Valentina | | 1/3 | 33 | 0/2 | | | 1/1 | | | | 2 | | | 2 | | | | | | | | | | 16:25 |
| 21 | STAMIN Roberta Maria | | 4/4 | 100 | | | 2/2 | | 2/2 | | | | | | | | | | | | | | 1 | | 30:46 |
| 23 | ILIE Marina Alexandra | S | 6/6 | 100 | | | 4/4 | | 2/2 | | | | | | | | 1 | | | | | | | | 46:05 |
| 24 | PICA Miruna Cristina | S | 2/5 | 40 | 1/4 | | | | | 1/1 | | 1 | 2 | | | | | | | | | 1 | | | 30:53 |
| 77 | LASCATEU Diana | | 0/3 | 0 | 0/3 | | | | | | | | | | | 1 | | | | | | | | | 10:51 |
| | Team / bench | | | | | | | | | | | | | | | | | | | | | | | | |
| | UKUPNO | | 37/56 | 66 | 6/19 | 4/5 | 8/11 | 10/11 | 5/6 | 4/4 | 0/0 | 12 | 11 | 5 | 6 | 1 | 5 | 0 | 2 | 7 | 0 | 0 | | | |

| # | Surname and name | Saves / shots | | | | | | | | |
|----|-------------------------|---------------|----|-------|-----|------|-----|-----|------|-----|
| | | Tot. | % | 9m | 6m | Wing | 7m | FB | Brk. | LD |
| 1 | CHETRARU Andreea Bianca | 10/19 | 53 | 5/8 | 1/3 | 1/2 | 1/4 | 2/2 | | |
| 12 | CIUCA Diana Cristiana | 10/20 | 50 | 6/11 | 0/1 | 3/4 | 0/2 | | 1/2 | |
| | TOTAL | 20/39 | 51 | 11/19 | 1/4 | 4/6 | 1/6 | 3/2 | 1/2 | 0/0 |

Coach: Carmen Andreea Amariei

Number of attacks: 55, Efficiency: 67%, Average Duration: 28,4 seconds

Attack by type of defense

| | Shots | 9m | 6m | Wing | TF | E7 | E2 |
|-------------|-------|------|-----|------|----|----|----|
| On def. 6-0 | 12/18 | 4/7 | 3/4 | 2/4 | 1 | 8 | 4 |
| On def. 5-1 | 10/21 | 2/12 | 1/1 | 6/7 | 5 | 3 | 1 |
| Fastbreak | 5/6 | | | | 0 | 0 | 0 |

Defense by type

| | Total | 9m | 6m | Wing | Stl. | C7 | 2m |
|-----------|-------|------|-----|------|------|----|----|
| Def. 6-0 | 13/40 | 8/26 | 2/4 | 2/8 | 1 | 4 | 7 |
| Def. 5-1 | 1/1 | 0/0 | 1/1 | 0/0 | 0 | 1 | 0 |
| Fastbreak | 0/3 | | | | 0 | 0 | 0 |

Attack with goalkeeper out

| | Attack | | | | Reaction | | |
|-------|--------|------|-------|----|----------|-----|------|
| | Att. | Eff. | Shots | TF | FB | LD | Tot. |
| GK in | 55 | 67% | 37/56 | 6 | 0/3 | 0/0 | 0/3 |

GK out attack is counted if one part or whole attack was GK out

Defense with opponent goalkeeper out

| | Attack | | | | Reaction | | |
|-------|--------|------|-------|----|----------|-----|------|
| | Att. | Eff. | Shots | TF | FB | LD | Tot. |
| GK in | 54 | 35% | 19/50 | 10 | 5/6 | 0/0 | 5/6 |

Attack with player superiority/minority

| | Attack | | | | Reaction | | |
|----------------|--------|------|-------|----|----------|-----|------|
| | Att. | Eff. | Shots | TF | FB | LD | Tot. |
| Superiority +1 | 6 | 100% | 6/9 | 1 | 0/0 | 0/0 | 0/0 |
| Normal | 31 | 65% | 20/31 | 4 | 0/2 | 0/0 | 0/2 |
| Minority -1 | 14 | 57% | 8/12 | 1 | 0/1 | 0/0 | 0/1 |

Player superiority counted at the end of attack (in case it changes during attack)

Defense with player superiority/minority

| | Attack | | | | Reaction | | |
|----------------|--------|------|-------|----|----------|-----|------|
| | Att. | Eff. | Shots | TF | FB | LD | Tot. |
| Minority -1 | 17 | 41% | 7/15 | 2 | 0/0 | 0/0 | 0/0 |
| Normal | 27 | 33% | 9/26 | 7 | 3/3 | 0/0 | 3/3 |
| Superiority +1 | 5 | 20% | 1/5 | 0 | 1/2 | 0/0 | 1/2 |

Jersey number Tot. Total shooting 6m 6m (line) shooting 9m 9m shooting Wng. Wing shooting FB Fastbreak sh. 7m 7m penalty sh.
 Brk. Breakthrough sh. LD Long distance sh. As. Assists E7 Earned 7m pen. TF Technical Faults St. Steals 2m 2m punishments
 C7. Committed 7m E2 Earned 2m pun. YC. Yellow cards RC Red cards BC Blue cards Blk. Blocks S Starting Line-up



IHF Women's Youth (U18) World Championship

Poland (Kielce)

Preliminary Round - Group A



Match Team Statistics

Match No. 19

Austria 19 - 37 Romania

(8 - 21) (11 - 16)

9.8.2018. 16:00

Attendance: 200

Hall Legionow

Referees: Viktoriia Alpaidze (RUS) / Tatiana Berezkina (RUS)

Shot distribution by player

21. Balaceanu

| | | |
|-----|--|-----|
| | | |
| 1/2 | | 2/2 |
| 2/2 | | 1/1 |

3 A. Cace

| | | |
|-----|-----|-----|
| | | |
| | 0/1 | 2/2 |
| 1/1 | 1/1 | 0/1 |

1 post

6 A. Coman

| | | |
|--|--|-----|
| | | |
| | | 0/1 |
| | | |

1 miss.

7 A. Popa

| | | |
|-----|--|--|
| | | |
| | | |
| 1/1 | | |

1 miss.

8 M. Barabas

| | | |
|-----|--|-----|
| 1/1 | | |
| 0/1 | | |
| | | 2/3 |

1 post 1 block

9 D. Valcan

| | | |
|-----|--|-----|
| 1/1 | | 1/1 |
| | | 2/2 |
| | | |

10 I. Marin

| | | |
|--|-----|-----|
| | | |
| | | 1/1 |
| | 1/1 | |

11 A. Tarsoaga

| | | |
|-----|--|-----|
| | | |
| 1/1 | | 2/2 |
| | | 1/1 |

15 S. Jipa

| | | |
|--|--|--|
| | | |
| | | |
| | | |

18 P. Moraru

| | | |
|--|--|-----|
| | | |
| | | 1/2 |
| | | |

1 block

21 R. Stamin

| | | |
|-----|--|-----|
| | | |
| | | 3/3 |
| 1/1 | | |

23 M. Ilie

| | | |
|-----|--|-----|
| | | |
| 2/2 | | 3/3 |
| 1/1 | | |

24 M. Pica

| | | |
|-----|--|-----|
| | | 1/1 |
| 1/1 | | 0/2 |
| | | |

1 miss.

77 D. Lascateu

| | | |
|--|-----|--|
| | | |
| | 0/1 | |
| | | |

2 block

TOTAL

| | | |
|-----|-----|-------|
| 2/2 | | 2/2 |
| 5/7 | 0/2 | 16/20 |
| 6/6 | 2/2 | 4/6 |

2 post 3 miss. 4 block

Saves distribution goalkeepers

1 A. Chetaru

| | | |
|-----|-----|-----|
| 3/4 | 1/1 | |
| 1/2 | 1/1 | 1/6 |
| 1/1 | 2/3 | 0/1 |

12 D. Ciuca

| | | |
|-----|-----|-----|
| 1/1 | | 1/4 |
| 2/5 | 1/1 | 3/6 |
| 0/1 | 2/2 | |

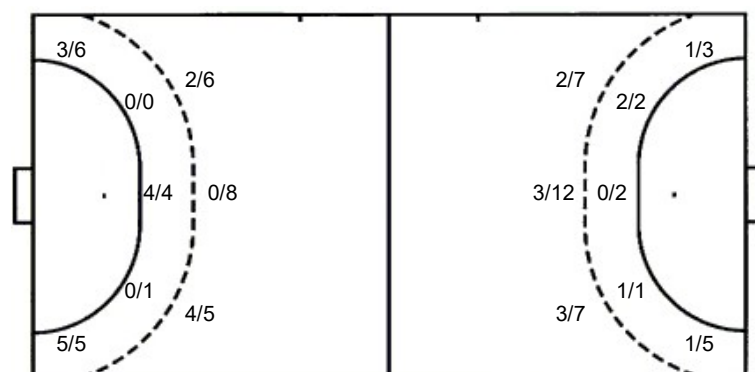
TOTAL

| | | |
|-----|-----|------|
| 4/5 | 1/1 | 1/4 |
| 3/7 | 2/2 | 4/12 |
| 1/2 | 4/5 | 0/1 |

Shots by position

ATTACK

DEFENSE



7m penalties 10/11

Fastbreak 5/6

Breakthrough 4/4

Long dist. 0/0

7m penalties 5/6

Fastbreak 0/3

Breakthrough 1/2

Long dist. 0/0

Shooting statistics

| Position | Goals | Sav. | Miss. | Post | Bik. | Total | % |
|--------------|-----------|-----------|----------|----------|----------|-----------|-----------|
| Back (9m) | 6 | 5 | 3 | 1 | 4 | 19 | 32 |
| Line (6m) | 4 | 1 | 0 | 0 | 0 | 5 | 80 |
| Wing | 8 | 2 | 0 | 1 | 0 | 11 | 73 |
| 7m penalties | 10 | 1 | 0 | 0 | 0 | 11 | 91 |
| Fastbreak | 5 | 1 | 0 | 0 | 0 | 6 | 83 |
| Breakthrough | 4 | 0 | 0 | 0 | 0 | 4 | 100 |
| Total | 37 | 10 | 3 | 2 | 4 | 56 | 66 |

Jersey number Tot. Total shooting 6m 6m (line) shooting 9m 9m shooting Wng. Wing shooting FB Fastbreak sh. 7m 7m penalty sh.
 Brk. Breakthrough sh. LD Long distance sh. As. Assists E7 Earned 7m pen. TF Technical Faults St. Steals 2m 2m punishments
 C7. Committed 7m E2 Earned 2m pun. YC. Yellow cards RC Red cards BC Blue cards Blk. Blocks S Starting Line-up