



IHF Women's Youth (U18) World Championship

Poland (Kielce)

Preliminary Round - Group B



Match Team Statistics

Match No. 14

Chile 13 - 42 Hungary

(6 - 20) (7 - 22)

8.8.2018. 18:00

Attendance: 150

Hall Legionow

Referees: Akram Alzayyat (JOR) / Yasser Eial (JOR)

Chile

#	Surname and name	S	Goals / shots									Attack				Def.			Penalties			TP					
			Tot.	%	9m	6m	Wing	7m	FB	Brk.	LD	As.	E7	E2	TF	St.	C7	Blk	YC	2m	RC		BC				
1	PARRA Francisca	S	1/5	20	1/5									1			6	1									43:27
2	BAUMANN Javiera																										
3	ALVAREZ Fernanda	S													2			1									44:42
4	SEPULVEDA Valentina	S	0/3	0	0/2									1		1	3										37:59
8	ARAYA Josefa		4/8	50	1/4			1/1	0/1	1/1	1/1					1	6										26:12
9	SEPULVEDA Catalina																			1	1						22:41
10	ALARCON Sofia	S	3/7	43	1/3	1/1	1/2	0/1									7										42:50
13	REBOLLEDO Antonia	S	4/8	50	0/1	0/1	2/3	2/3									1										28:57
14	GOMEZ Sofia																1										15:36
15	CORTEZ Madeleine	S																									26:56
16	RAMIREZ Evelyn		1/1	100		1/1								1			1										38:49
17	PACHECO Pia	S													1	2	1										29:52
20	DIAZ Constanza		0/2	0	0/2												2	1						1			19:09
22	GAJARDO Martina		0/4	0	0/3			0/1									1			1							15:20
31	YARELLI Leon																										14:31
44	ANDRADE Javiera																										12:59
	Team / bench																1										
	UKUPNO		13/38	34	3/20	2/3	4/7	2/5	1/1	1/2	0/0			2	4	4	30	3	0	1	1	2	0	0			

#	Surname and name	Saves / shots								
		Tot.	%	9m	6m	Wing	7m	FB	Brk.	LD
15	CORTEZ Madeleine	8/41	20	3/17	1/2	3/4		1/14	0/4	
44	ANDRADE Javiera	2/11	18	1/7	1/1	0/1		0/2		
	TOTAL	10/52	19	4/24	2/3	3/5	0/0	1/16	0/4	0/0

Coach: Felipe Barrientos

Number of attacks: 61, Efficiency: 21%, Average Duration: 41,0 seconds

Attack by type of defense

	Shots	9m	6m	Wing	TF	E7	E2
On def. 6-0	9/29	2/17	2/3	4/7	25	3	3
On def. 5-1	0/0	0/0	0/0	0/0	2	0	0
On def. 4-2	1/3	1/3	0/0	0/0	3	1	1
Fastbreak	1/1				0	0	0

Defense by type

	Total	9m	6m	Wing	Stl.	C7	2m
Def. 6-0	8/14	6/10	0/1	0/1	1	0	2
Def. 5-1	9/14	5/7	0/0	2/5	0	0	0
Def. 4-2	10/12	9/9	1/2	0/1	2	0	0
Fastbreak	15/17				0	0	0

Attack with goalkeeper out

	Attack				Reaction		
	Att.	Eff.	Shots	TF	FB	LD	Tot.
GK in	61	21%	13/38	30	15/17	0/0	15/17

GK out attack is counted if one part or whole attack was GK out

Defense with opponent goalkeeper out

	Attack				Reaction		
	Att.	Eff.	Shots	TF	FB	LD	Tot.
GK in	62	68%	42/57	11	1/1	0/0	1/1

Attack with player superiority/minority

	Attack				Reaction		
	Att.	Eff.	Shots	TF	FB	LD	Tot.
Superiority +1	8	0%	0/5	3	0/0	0/0	0/0
Normal	46	26%	12/29	23	12/14	0/0	12/14
Minority -1	2	50%	1/1	1	0/0	0/0	0/0

Player superiority counted at the end of attack (in case it changes during attack)

Defense with player superiority/minority

	Attack				Reaction		
	Att.	Eff.	Shots	TF	FB	LD	Tot.
Minority -1	3	0%	0/3	1	0/0	0/0	0/0
Normal	48	73%	35/45	8	1/1	0/0	1/1
Superiority +1	6	33%	2/4	2	0/0	0/0	0/0

Jersey number Tot. Total shooting 6m 6m (line) shooting 9m 9m shooting Wng. Wing shooting FB Fastbreak sh. 7m 7m penalty sh.
 Brk. Breakthrough sh. LD Long distance sh. As. Assists E7 Earned 7m pen. TF Technical Faults St. Steals 2m 2m punishments
 C7. Committed 7m E2 Earned 2m pun. YC. Yellow cards RC Red cards BC Blue cards Blk. Blocks S Starting Line-up



IHF Women's Youth (U18) World Championship

Poland (Kielce)

Preliminary Round - Group B



Match Team Statistics

Match No. 14

Chile 13 - 42 Hungary

(6 - 20) (7 - 22)

8.8.2018. 18:00

Attendance: 150

Hall Legionow

Referees: Akram Alzayyat (JOR) / Yasser Eial (JOR)

Shot distribution by player

1 F. Parra

0/1		1/1

1 post 1 miss. 1 block

2 J. Baumann

3 F. Alvarez

4 V. Sepulveda

	0/1	

1 miss. 1 block

8 J. Araya

1/1		
1/1		1/2

2 miss. 1 block 1/1 lob

9 C. Sepulveda

10 S. Alarcon

1/1		
		2/3

3 post

13 A. Rebolledo

		1/1
0/1	0/1	1/2
2/2		

1 post

14 S. Gomez

16 E. Ramirez

	1/1	

17 P. Pacheco

20 C. Diaz

	0/1	

1 block

22 M. Gajardo

0/1		

1 post 1 miss. 1 block

31 L. Yarelli

TOTAL

2/2		1/1
0/2	0/3	4/6
3/4	1/1	1/2

6 post 5 miss. 5 block 1/1 lob

Saves distribution goalkeepers

15 M. Cortez

0/5	1/2	1/6
1/6		4/10
1/5	0/4	0/2

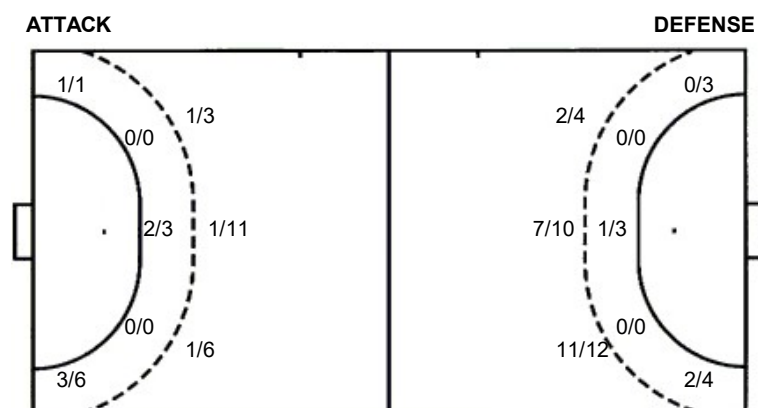
44 J. Andrade

	0/2	0/3
1/1	1/1	0/2
0/2		

TOTAL

0/5	1/4	1/9
2/7	1/1	4/12
1/7	0/4	0/2

Shots by position



Shooting statistics

Position	Goals	Sav.	Miss.	Post	Blk.	Total	%
Back (9m)	3	5	4	3	5	20	15
Line (6m)	2	1	0	0	0	3	67
Wing	4	1	0	2	0	7	57
7m penalties	2	2	0	1	0	5	40
Fastbreak	1	0	0	0	0	1	100
Breakthrough	1	0	1	0	0	2	50
Total	13	9	5	6	5	38	34

Jersey number Tot. Total shooting 6m 6m (line) shooting 9m 9m shooting Wng. Wing shooting FB Fastbreak sh. 7m 7m penalty sh.
 Brk. Breakthrough sh. LD Long distance sh. As. Assists E7 Earned 7m pen. TF Technical Faults St. Steals 2m 2m punishment sh.
 C7. Committed 7m E2 Earned 2m pun. YC. Yellow cards RC Red cards BC Blue cards Blk. Blocks S Starting Line-up



IHF Women's Youth (U18) World Championship

Poland (Kielce)

Preliminary Round - Group B



Match Team Statistics

Match No. 14

Chile 13 - 42 Hungary

(6 - 20) (7 - 22)

8.8.2018. 18:00

Attendance: 150

Hall Legionow

Referees: Akram Alzayyat (JOR) / Yasser Eial (JOR)

Hungary

#	Surname and name	S	Goals / shots									Attack			Def.			Penalties			TP				
			Tot.	%	9m	6m	Wing	7m	FB	Brk.	LD	As.	E7	E2	TF	St.	C7	Blk	YC	2m		RC	BC		
1	MAGERA Noémi	S											2		1										30:00
2	ALBEK Anna		5/5	100	4/4								1		1			1							23:31
3	SCHATZL Natalie	S	5/7	71	1/1			0/2										1			1				30:00
6	SIMON Armilla	S	1/1	100	1/1										1				1	1	1				30:00
8	VAMOS Petra	S	4/5	80	1/2													1							21:28
9	VARGA Emőke																								
10	KELLERMANN Dóra		2/4	50	2/3	0/1							1					1							30:48
12	HERCZEG Lili												1												21:35
13	ARANY Rebeka	S	2/3	67	0/1			1/1										1							30:00
14	PAL Tamara		7/9	78	5/6	0/1							1			6	2								40:42
15	KUCZORA Csenge	S	2/3	67	1/2										1										30:00
16	SZABÓ Dóra																								
18	SZILOVICS Fanni		3/6	50	2/3	1/1	0/1									1					3				30:00
21	BORGYOS Panna		1/2	50			0/1									1	1								30:00
23	BÁNFAI Kira		6/8	75	2/2			1/2								1		2	1			1			30:00
33	TÓTH Nikolett	S	4/4	100	1/1								1					1				1			41:56
	Team / bench																								
	UKUPNO		42/57	74	20/26	1/3	2/7	0/0	15/17	4/4	0/0		6	1	2	11	7	4	5	1	4	0	0		

#	Surname and name	Saves / shots								
		Tot.	%	9m	6m	Wing	7m	FB	Brk.	LD
1	MAGERA Noémi	3/9	33	2/3	1/1	0/4	0/1			
12	HERCZEG Lili	6/13	46	3/5	0/2	1/1	2/3	0/1	0/1	
16	SZABÓ Dóra									
	TOTAL	9/22	41	5/8	1/3	1/5	2/4	1/1	0/1	0/0

Coach: Beáta Bohus

Number of attacks: 62, Efficiency: 68%, Average Duration: 17,7 seconds

Attack by type of defense

	Shots	9m	6m	Wing	TF	E7	E2
On def. 6-0	8/14	6/10	0/1	0/1	7	1	2
On def. 5-1	9/14	5/7	0/0	2/5	1	0	0
On def. 4-2	10/12	9/9	1/2	0/1	3	0	0
Fastbreak	15/17				0	0	0

Defense by type

	Total	9m	6m	Wing	Stl.	C7	2m
Def. 6-0	9/29	2/17	2/3	4/7	2	3	3
Def. 5-1	0/0	0/0	0/0	0/0	4	0	0
Def. 4-2	1/3	1/3	0/0	0/0	1	1	1
Fastbreak	1/1				0	0	0

Attack with goalkeeper out

	Attack				Reaction		
	Att.	Eff.	Shots	TF	FB	LD	Tot.
GK in	62	68%	42/57	11	1/1	0/0	1/1

GK out attack is counted if one part or whole attack was GK out

Attack with player superiority/minority

	Attack				Reaction		
	Att.	Eff.	Shots	TF	FB	LD	Tot.
Superiority +1	3	0%	0/3	1	0/0	0/0	0/0
Normal	48	73%	35/45	8	1/1	0/0	1/1
Minority -1	6	33%	2/4	2	0/0	0/0	0/0

Player superiority counted at the end of attack (in case it changes during attack)

Defense with opponent goalkeeper out

	Attack				Reaction		
	Att.	Eff.	Shots	TF	FB	LD	Tot.
GK in	61	21%	13/38	30	15/17	0/0	15/17

Defense with player superiority/minority

	Attack				Reaction		
	Att.	Eff.	Shots	TF	FB	LD	Tot.
Minority -1	8	0%	0/5	3	0/0	0/0	0/0
Normal	46	26%	12/29	23	12/14	0/0	12/14
Superiority +1	2	50%	1/1	1	0/0	0/0	0/0

Jersey number Tot. Total shooting 6m 6m (line) shooting 9m 9m shooting Wng Wing shooting FB Fastbreak sh. 7m 7m penalty sh.
 Brk. Breakthrough sh. LD Long distance sh. As. Assists E7 Earned 7m pen. TF Technical Faults St. Steals 2m 2m punishments
 C7. Committed 7m E2 Earned 2m pun. YC. Yellow cards RC Red cards BC Blue cards Blk. Blocks S Starting Line-up



IHF Women's Youth (U18) World Championship

Poland (Kielce)

Preliminary Round - Group B



Match Team Statistics

Match No. 14

Chile 13 - 42 Hungary

(6 - 20) (7 - 22)

8.8.2018. 18:00

Attendance: 150

Hall Legionow

Referees: Akram Alzayyat (JOR) / Yasser Eial (JOR)

Shot distribution by player

2 A. Albek

		1/1
1/1		1/1
1/1	1/1	

3 N. Schatzl

3/3		
		1/1
0/1		1/1

1 miss.

6 A. Simon

	1/1	

8 P. Vámos

		1/1
2/2		1/1

1 miss.

9 E. Varga

10 D. Kellermann

1/1	0/1	0/1
		1/1

13 R. Arany

	1/1	1/1

1 post

14 T. Pál

	1/2	4/4
1/2		
1/1		

15 C. Kuczora

		0/1
1/1	1/1	

18 F. Szilovics

0/1		2/4
1/1		

21 P. Borgyos

		1/1

1 miss.

23 K. Bánfai

2/2	1/1	
		1/2
1/1		

1 post 1/1 lob

33 N. Tóth

		1/1
		1/1
1/1	1/1	

TOTAL

5/5	3/4	8/9
5/7	0/1	8/12
6/7	4/4	2/2

2 post 3 miss. 1/1 lob

Saves distribution goalkeepers

1 N. Magera

0/1		0/1
1/1	1/1	1/1
0/3		0/1

12 L. Herczeg

0/1		
1/1	2/2	1/5
1/1	0/1	1/1

16 D. Szabó

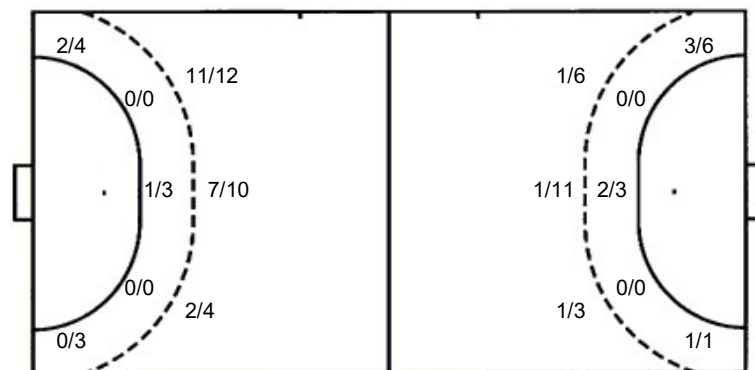
TOTAL

0/2		0/1
2/2	3/3	2/6
1/4	0/1	1/2

Shots by position

ATTACK

DEFENSE



7m penalties 0/0

Fastbreak 15/17

Breakthrough 4/4

Long dist. 0/0

7m penalties 2/5

Fastbreak 1/1

Breakthrough 1/2

Long dist. 0/0

Shooting statistics

Position	Goals	Sav.	Miss.	Post	Blk.	Total	%
Back (9m)	20	4	1	1	0	26	77
Line (6m)	1	2	0	0	0	3	33
Wing	2	3	2	0	0	7	29
7m penalties	0	0	0	0	0	0	0
Fastbreak	15	1	0	1	0	17	88
Breakthrough	4	0	0	0	0	4	100
Total	42	10	3	2	0	57	74

Jersey number Tot. Total shooting 6m 6m (line) shooting 9m 9m shooting Wng. Wing shooting FB Fastbreak sh. 7m 7m penalty sh.
 Brk. Breakthrough sh. LD Long distance sh. As. Assists E7 Earned 7m pen. TF Technical Faults St. Steals 2m 2m punishments
 C7. Committed 7m E2 Earned 2m pun. YC. Yellow cards RC Red cards BC Blue cards Blk. Blocks S Starting Line-up