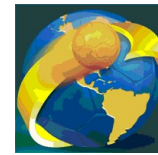




IHF South and Central American Emerging Nations Ch

Columbia (Palmira)

Group C



Match Team Statistics

Guatemala 35 - 10 Bolivia

22.10.2018. 18:30

Match No. 4

(16 - 5) (19 - 5)

Attendance:

Sports Center Pavillon Blanco

Referees: Felix Estrada (COL) / Gabriel Pineda (COL)

Guatemala

#	Surname and name	S	Goals / shots								Attack				Def.			Penalties			TP			
			Tot.	%	9m	6m	Wing	7m	FB	Brk.	LD	As.	E7	E2	TF	St.	C7	Blk	YC	2m		RC	BC	
1	AMADO DE LEÓN Ricardo Alfredo																						19:46	
3	RIVERA ALVARADO Brandon José Roberto	S	5/5	100			3/3			2/2				1									37:23	
5	HERRERA JUAREZ Ubaldo Antonio	S	10/11	91	5/6		1/1	2/2	1/1	1/1				4	1	2							31:21	
6	DE LEÓN CHÁVEZ Luis Miguel		1/2	50			0/1			1/1				1		1	1						23:53	
8	HERNÁNDEZ RAMOS Carlos Ignacio		2/6	33	0/1	1/1				0/1	1/3			1		1	2						36:51	
10	MARTÍNEZ Edwin Josué	S	3/5	60	2/4									2		1	1						39:18	
12	MARTINEZ CALVILLO Marvin Arnoldo	S																					36:15	
13	ALDI ÁVILA Estiff	S	7/8	88		1/1	4/4			1/2	1/1					1	1						42:48	
17	MONZON TECUN Marco Tulio	S												1		1	1				1		38:32	
21	ROJAS ROJAS Berny Alexander	S	4/4	100	1/1	2/2								2	1	1	2	1		1	2		29:23	
29	CONTRERAS Diego Sebastián													1		1	1	1			2		31:53	
33	SOTO HERNANDEZ Carlos Manuel		0/1	0	0/1																		0:43	
42	CAMEY ROCA David Enrique		3/5	60			1/3			2/2						3	1						21:28	
51	GARCÍA CERMENO Brandon Rene														1			1		1	2		30:26	
	Team / bench																							
	UKUPNO		35/47	74	8/13	4/4	9/12	2/2	7/9	5/7	0/0			12	2	2	11	9	5	0	2	7	0	0

Goalkeepers		Saves / shots									
#	Surname and name	Tot.	%	9m	6m	Wing	7m	FB	Brk.	LD	
1	AMADO DE LEÓN Ricardo Alfredo	2/6	33			1/3	0/1		1/2		
12	MARTINEZ CALVILLO Marvin Arnoldo	10/16	63	4/4	2/4	3/3	1/4		0/1		
	TOTAL	12/22	55	4/4	2/4	4/6	1/5	0/0	1/3	0/0	

Coach: **Garana David Arana Cancinos**

Number of attacks: 57, Efficiency: 61%, Average Duration: 31,1 seconds

Attack by type of defense

	Shots	9m	6m	Wing	TF	E7	E2
On def. 6-0	11/16	6/8	0/0	3/5	5	1	2
On def. 5-1	15/20	2/5	4/4	6/7	6	1	0
Fastbreak	7/9				0	0	0

Defense by type

	Total	9m	6m	Wing	Stl.	C7	2m
Def. 6-0	1/8	0/2	1/2	0/4	4	1	2
Def. 5-1	5/14	0/3	1/4	2/3	5	4	5
Fastbreak	0/0				0	0	0

Attack with goalkeeper out

	Attack				Reaction		
	Att.	Eff.	Shots	TF	FB	LD	Tot.
GK in	57	61%	35/47	11	0/0	0/0	0/0

GK out attack is counted if one part or whole attack was GK out

Defense with opponent goalkeeper out

	Attack				Reaction		
	Att.	Eff.	Shots	TF	FB	LD	Tot.
GK in	58	17%	10/27	31	7/9	0/0	7/9

Attack with player superiority/minority

	Attack				Reaction		
	Att.	Eff.	Shots	TF	FB	LD	Tot.
Superiority +1	4	50%	2/3	1	0/0	0/0	0/0
Normal	31	71%	22/26	5	0/0	0/0	0/0
Minority -1	15	47%	7/11	4	0/0	0/0	0/0
Minority -2	1	0%	0/1	0	0/0	0/0	0/0

Player superiority counted at the end of attack (in case it changes during attack)

Defense with player superiority/minority

	Attack				Reaction		
	Att.	Eff.	Shots	TF	FB	LD	Tot.
Minority -2	1	100%	1/1	0	0/0	0/0	0/0
Minority -1	17	29%	5/13	7	0/0	0/0	0/0
Normal	30	13%	4/9	18	6/7	0/0	6/7
Superiority +1	5	0%	0/3	2	1/1	0/0	1/1

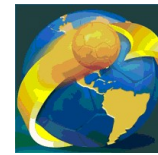
Jersey number Tot. Total shooting 6m 6m (line) shooting 9m 9m shooting Wng. Wing shooting FB Fastbreak sh. 7m 7m penalty sh.
 Brk. Breakthrough sh. LD Long distance sh. As. Assists E7 Earned 7m pen. TF Technical Faults St. Steals 2m 2m punishments
 C7. Committed 7m E2 Earned 2m pun. YC. Yellow cards RC Red cards BC Blue cards Blk. Blocks S Starting Line-up



IHF South and Central American Emerging Nations Ch

Columbia (Palmira)

Group C



Match Team Statistics

Guatemala 35 - 10 Bolivia

22.10.2018. 18:30

Match No. 4

(16 - 5) (19 - 5)

Attendance:

Sports Center Pavillon Blanco

Referees: Felix Estrada (COL) / Gabriel Pineda (COL)

Shot distribution by player

3 B. Rivera Alvarado

1/1		1/1
1/1		

2/2 lob

5 U. Herrera Juarez

1/1		1/1
1/1		2/2
1/1		4/4

1 miss.

6 L. De León Chávez

		1/1
0/1		

8 C. Hernández Ramos

1/1	0/1	
0/1		0/1
		1/1

1 miss.

10 E. Martínez

		1/1
1/2	1/1	

1 post

13 E. Aldi Ávila

1/2	1/1	1/1
	1/1	1/1
	1/1	1/1

17 M. Monzón Tecún

21 B. Rojas Rojas

		1/1
	1/1	1/1

1/1 lob

29 D. Contreras

33 C. Soto Hernandez

1 miss.

42 D. Camey Roca

1/1	1/1	1/1

1 post 1 miss.

51 B. García Cermeno

TOTAL

4/5	1/2	6/6
2/3	1/1	3/4
3/5	4/4	8/8

2 post 4 miss. 3/3 lob

Saves distribution goalkeepers

1 R. Amado De León

	0/1	
1/1		0/1
1/2		0/1

12 M. Martinez Calvillo

	2/3	
3/4		1/3
1/1	3/3	0/1

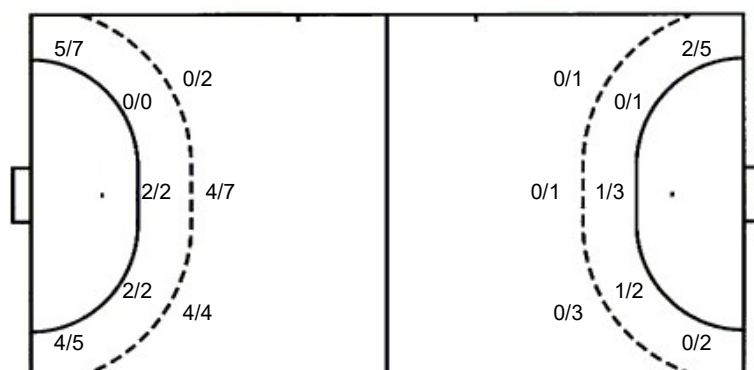
TOTAL

	2/4	
4/5		1/4
2/3	3/3	0/2

Shots by position

ATTACK

DEFENSE



7m penalties 2/2
Fastbreak 7/9
Breakthrough 5/7
Long dist. 0/0

7m penalties 4/5
Fastbreak 0/0
Breakthrough 2/4
Long dist. 0/0

Shooting statistics

Position	Goals	Sav.	Miss.	Post	Blk.	Total	%
Back (9m)	8	1	3	1	0	13	62
Line (6m)	4	0	0	0	0	4	100
Wing	9	1	1	1	0	12	75
7m penalties	2	0	0	0	0	2	100
Fastbreak	7	2	0	0	0	9	78
Breakthrough	5	2	0	0	0	7	71
Total	35	6	4	2	0	47	74

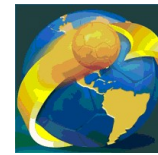
Jersey number
Brk. Breakthrough sh.
C7. Committed 7m
Tot. Total shooting
LD Long distance sh.
E2 Eearned 2m pun.
6m 6m (line) shooting
As. Assists
Yc. Yellow cards
9m 9m shooting
E7 Eearned 7m pen.
RC Red cards
Wng. Wing shooting
TF Technical Faults
BC Blue cards
FB Fastbreak sh.
St. Steals
Blk. Blocks
7m 7m penalty sh.
2m 2m punishments
S Starting Line-up



IHF South and Central American Emerging Nations Ch

Columbia (Palmira)

Group C



Match Team Statistics

Guatemala 35 - 10 Bolivia

22.10.2018. 18:30

Match No. 4

(16 - 5) (19 - 5)

Attendance:

Sports Center Pavillon Blanco

Referees: Felix Estrada (COL) / Gabriel Pineda (COL)

Bolivia

Igraei		Goals / shots										Attack				Def.			Penalties			TP		
#	Surname and name	S	Tot.	%	9m	6m	Wing	7m	FB	Brk.	LD	As.	E7	E2	TF	St.	C7	Blk	YC	2m	RC		BC	
3	JULIAN MERCADO Joel	S																						55:11
4	SERRUDO Diego Bryan																							8:46
7	ZURITA HUAYTA Carlos Gilmar		1/3	33	0/1	0/1				1/1					5									18:47
9	ROSALES GILDRES Herbert Fernando																							4:49
10	CHILACA Martin Miguel	S										1			8									45:28
11	ROJAS MORALES Jose Maria Huascar	S	0/2	0		0/2							3	4	3	2		1	2					49:47
14	CANAZA QUISPE Pablo	S	0/1	0						0/1					7									44:56
15	ROJAS MORALES Tomas Sebastian	S	0/1	0	0/1							1			4	1								29:29
20	FERNANDEZ Eddy	S	2/4	50			2/4						1	1		2								41:52
23	LIMA MONTERO Alejandro Chein														1									6:52
24	LISIDRO QUISPE Arturo Efrain		4/9	44	0/2		0/1	4/5		0/1					2									33:40
26	SIERRAALTA Alex Jhomar Mamani		0/1	0			0/1							1										18:16
77	CRESPO GUTIERREZ Jorge Orlando	S	2/4	50	0/1	1/1	0/1			1/1				1	1	1								56:06
99	CHOQUE PALAPE Arnold Jhordan		1/2	50		1/2																		6:01
Team / bench																								
UKUPNO			10/27	37	0/5	2/6	2/7	4/5	0/0	2/4	0/0	2	4	7	31	4	2	0	1	2	0	0		

Goalkeepers		Saves / shots									
#	Surname and name	Tot.	%	9m	6m	Wing	7m	FB	Brk.	LD	
3	JULIAN MERCADO Joel	6/38	16	1/8	0/4	1/9	0/2	2/8	2/7		
9	ROSALES GILDRES Herbert Fernando	0/3	0	0/1		0/1		0/1			
TOTAL		6/41	15	1/9	0/4	1/10	0/2	2/9	2/7	0/0	

Coach:

Number of attacks: 58, Efficiency: 17%, Average Duration: 30,8 seconds

Attack by type of defense

	Shots	9m	6m	Wing	TF	E7	E2
On def. 6-0	1/8	0/2	1/2	0/4	8	0	3
On def. 5-1	5/14	0/3	1/4	2/3	23	4	4
Fastbreak	0/0				0	0	0

Defense by type

	Total	9m	6m	Wing	Stl.	C7	2m
Def. 6-0	11/16	6/8	0/0	3/5	2	1	2
Def. 5-1	15/20	2/5	4/4	6/7	2	1	0
Fastbreak	7/9				0	0	0

Attack with goalkeeper out

	Attack				Reaction		
	Att.	Eff.	Shots	TF	FB	LD	Tot.
GK in	58	17%	10/27	31	7/9	0/0	7/9

GK out attack is counted if one part or whole attack was GK out

Defense with opponent goalkeeper out

	Attack				Reaction		
	Att.	Eff.	Shots	TF	FB	LD	Tot.
GK in	57	61%	35/47	11	0/0	0/0	0/0

Attack with player superiority/minority

	Attack				Reaction		
	Att.	Eff.	Shots	TF	FB	LD	Tot.
Superiority +2	1	100%	1/1	0	0/0	0/0	0/0
Superiority +1	17	29%	5/13	7	0/0	0/0	0/0
Normal	30	13%	4/9	18	6/7	0/0	6/7
Minority -1	5	0%	0/3	2	1/1	0/0	1/1

Player superiority counted at the end of attack (in case it changes during attack)

Defense with player superiority/minority

	Attack				Reaction		
	Att.	Eff.	Shots	TF	FB	LD	Tot.
Minority -1	4	50%	2/3	1	0/0	0/0	0/0
Normal	31	71%	22/26	5	0/0	0/0	0/0
Superiority +1	15	47%	7/11	4	0/0	0/0	0/0
Superiority +2	1	0%	0/1	0	0/0	0/0	0/0

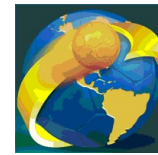
Jersey number Tot. Total shooting 6m 6m (line) shooting 9m 9m shooting Wng. Wing shooting FB Fastbreak sh. 7m 7m penalty sh.
 Brk. Breakthrough sh. LD Long distance sh. As. Assists E7 Earned 7m pen. TF Technical Faults St. Steals 2m 2m punishments
 C7. Committed 7m E2 Earned 2m pun. YC. Yellow cards RC Red cards BC Blue cards Blk. Blocks S Starting Line-up



IHF South and Central American Emerging Nations Ch

Columbia (Palmira)

Group C



Match Team Statistics

Guatemala 35 - 10 Bolivia

22.10.2018. 18:30

Match No. 4

(16 - 5) (19 - 5)

Attendance:

Sports Center Pavillon Blanco

Referees: Felix Estrada (COL) / Gabriel Pineda (COL)

Shot distribution by player

4 D. Serrudo

7 C. Zurita Huayta

0/1		
0/1		

1/1 lob

10 M. Chilaca

11 J. Rojas Morales

	0/1	

1 post

14 P. Canaza Quispe

0/1		

15 T. Rojas Morales

	0/1	

20 E. Fernandez

	1/1	
0/2		
1/1		

23 A. Lima Montero

24 A. Lisidro Quispe

	0/1	
1/2		1/1
	0/2	2/2

1 miss.

26 A. Sierraalta

		0/1

77 J. Crespo Gutierrez

		2/2

2 miss.

99 A. Choque Palape

	1/1	

1 post

TOTAL

	2/4	
1/5		3/4
1/3	0/3	2/2

2 post 3 miss. 1/1 lob

Saves distribution goalkeepers

3 J. Julián Mercado

1/5	1/2	0/5
1/3	0/1	1/4
2/4	0/4	0/7

9 H. Rosales Gildres

		0/1
0/1		0/1

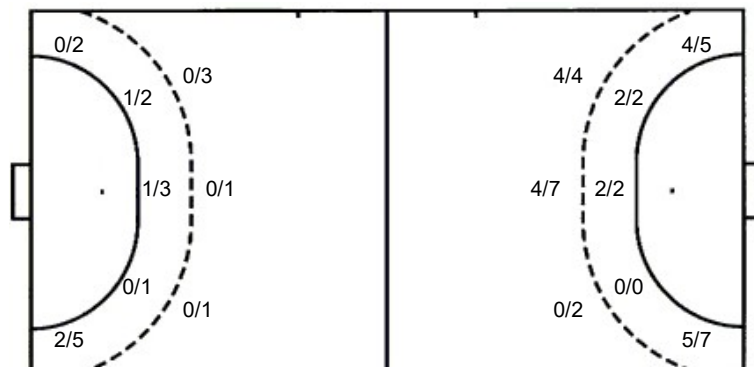
TOTAL

1/5	1/2	0/6
1/3	0/1	1/4
2/5	0/4	0/8

Shots by position

ATTACK

DEFENSE



7m penalties 4/5
Fastbreak 0/0
Breakthrough 2/4
Long dist. 0/0

7m penalties 2/2
Fastbreak 7/9
Breakthrough 5/7
Long dist. 0/0

Shooting statistics

Position	Goals	Sav.	Miss.	Post	Blk.	Total	%
Back (9m)	0	4	1	0	0	5	0
Line (6m)	2	2	0	2	0	6	33
Wing	2	4	1	0	0	7	29
7m penalties	4	1	0	0	0	5	80
Fastbreak	0	0	0	0	0	0	0
Breakthrough	2	1	1	0	0	4	50
Total	10	12	3	2	0	27	37

Jersey number Tot. Total shooting 6m 6m (line) shooting 9m 9m shooting Wng. Wing shooting FB Fastbreak sh. 7m 7m penalty sh.
Brk. Breakthrough sh. LD Long distance sh. As. Assists E7 Earned 7m pen. TF Technical Faults St. Steals 2m 2m punishments
C7. Committed 7m E2 Earned 2m pun. YC. Yellow cards RC Red cards BC Blue cards Blk. Blocks S Starting Line-up