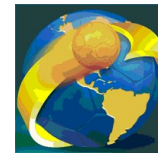




IHF South and Central American Emerging Nations Ch

Colombia (Palmira)

Placement Match 3-4



Match Team Statistics

Peru 29 - 24 Guatemala

28.10.2018. 16:00

Match No. 29

(14 - 13) (15 - 11)

Attendance: 500

Sports Center Pavillon Blanco

Referees: Ines Paolantoni (ARG) / Mariana Garcia (ARG)

Peru

Igraai		Goals / shots									Attack				Def.			Penalties			TP			
#	Surname and name	S	Tot.	%	9m	6m	Wing	7m	FB	Brk.	LD	As.	E7	E2	TF	St.	C7	Blk	YC	2m		RC	BC	
4	VELEZ LAZO Carlos Mauricio	S	2/2	100				2/2													1			39:40
8	GUTELIUS DIAZ Gianpierre Edson		5/10	50	1/4	1/3			1/1	2/2		4	1		2	1								31:00
9	TRELLES MALDONALDO Carlos Mauricio	S	4/9	44	1/3	1/2	0/2			2/2		4	3		2	1								60:00
10	ACUNA SEMINARIO Homero Manuel	S	1/1	100		1/1											1			1	2			37:44
15	CAMBORDA LEON Andre Jesus	S	0/1	0		0/1						1					1			1				21:33
16	LOPEZ FONSECA Percy Augusto																							3:00
18	LOPEZ NORIEGA Diego Roberto		3/6	50	2/5					1/1				1										42:47
19	ZERILLO VILLANUEVA Carlos Gianfranco	S	6/10	60		1/1	2/6		3/3				1	1										50:43
22	CORPUS RODRIGUEZ Johan Rusbel	S													1	1								53:18
28	VICUNA HURTADO Fernando		0/1	0			0/1																	6:36
29	TRELLES MALDONALDO Giancarlo		5/6	83		3/3		2/3						1	2									24:50
32	CHIARELLA CHIARELLA Giacarlo Norberto																							32:46
33	BUITRON MARCET Fernando	S	3/4	75			0/1		3/3						3	1								46:19
69	ALVAREZ SALAS Ricardo Alejandro																							
Team / bench																								
UKUPNO			29/50	58	4/12	7/11	2/10	4/5	7/7	5/5	0/0	9	5	3	10	4	2	0	2	3	0	0		

Goalkeepers		Saves / shots								
#	Surname and name	Tot.	%	9m	6m	Wing	7m	FB	Brk.	LD
22	CORPUS RODRIGUEZ Johan Rusbel	9/32	28	0/5	3/7	3/8	0/2		3/10	
32	CHIARELLA CHIARELLA Giacarlo Norberto									
TOTAL		9/32	28	0/5	3/7	3/8	0/2	0/0	3/10	0/0

Coach: Ivan Fernando Bendezu Lopez

Number of attacks: 58, Efficiency: 50%, Average Duration: 32,3 seconds

Attack by type of defense

	Shots	9m	6m	Wing	TF	E7	E2
On def. 6-0	11/26	2/8	5/9	1/6	6	3	2
On def. 5-1	7/12	2/4	2/2	1/4	4	2	1
Fastbreak	7/7				0	0	0

Defense by type

	Total	9m	6m	Wing	Stl.	C7	2m
Def. 6-0	2/2	0/0	1/1	1/1	1	0	0
Def. 5-1	10/20	1/3	1/3	3/6	3	2	2
Def. 4-2	5/12	2/3	1/3	0/3	0	0	0
Def. 3-3	4/4	2/2	1/1	1/1	0	0	1
Fastbreak	0/0				0	0	0

Attack with goalkeeper out

	Attack				Reaction		
	Att.	Eff.	Shots	TF	FB	LD	Tot.
GK out (7 on 6)	7	71%	5/6	0	0/0	1/1	1/1
GK out pl. minority	1	100%	1/1	0	0/0	0/0	0/0
GK in	50	46%	23/43	10	0/0	0/0	0/0

GK out attack is counted if one part or whole attack was GK out

Defense with opponent goalkeeper out

	Attack				Reaction		
	Att.	Eff.	Shots	TF	FB	LD	Tot.
GK in	59	41%	24/41	16	7/7	0/0	7/7

Attack with player superiority/minority

	Attack				Reaction		
	Att.	Eff.	Shots	TF	FB	LD	Tot.
Superiority +3	1	100%	1/1	0	0/0	0/0	0/0
Superiority +2	1	0%	0/0	1	0/0	0/0	0/0
Superiority +1	3	67%	2/3	0	0/0	0/0	0/0
Normal	15	47%	7/14	2	0/0	1/1	1/1
Minority -1	5	100%	5/6	0	0/0	0/0	0/0

Player superiority counted at the end of attack (in case it changes during attack)

Defense with player superiority/minority

	Attack				Reaction		
	Att.	Eff.	Shots	TF	FB	LD	Tot.
Minority -1	6	67%	4/6	1	0/0	0/0	0/0
Normal	15	33%	5/11	5	2/2	0/0	2/2
Superiority +1	2	0%	0/1	1	1/1	0/0	1/1
Superiority +2	2	0%	0/1	0	0/0	0/0	0/0
Superiority +3	1	0%	0/0	0	1/1	0/0	1/1

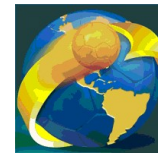
Jersey number Tot. Total shooting 6m 6m (line) shooting 9m 9m shooting Wng. Wing shooting FB Fastbreak sh. 7m 7m penalty sh.
 Brk. Breakthrough sh. LD Long distance sh. As. Assists E7 Earned 7m pen. TF Technical Faults St. Steals 2m 2m punishments
 C7. Committed 7m E2 Earned 2m pun. YC. Yellow cards RC Red cards BC Blue cards Blk. Blocks S Starting Line-up



IHF South and Central American Emerging Nations Ch

Colombia (Palmira)

Placement Match 3-4



Match Team Statistics
Match No. 29

Peru 29 - 24 Guatemala
(14 - 13) (15 - 11)

28.10.2018. 16:00
Attendance: 500
Sports Center Pavillon Blanco

Referees: Ines Paolantoni (ARG) / Mariana Garcia (ARG)

Shot distribution by player

4 C. Velez Lazo

		2/2

8 G. Gutelius Diaz

3/3		2/3

2 post 1 miss. 1 block

9 C. Trelles
Maldonado

0/1		
		0/2
1/1	2/2	1/1

2 miss.

10 H. Acuna
Seminario

		1/1

15 A. Camborda Leon

1 block

16 P. Lopez Fonseca

18 D. Lopez Noriega

1/1		1/1
		1/1

2 miss. 1 block

19 C. Zerillo
Villanueva

		2/2
1/1		1/1
	1/1	1/1

3 post 1 miss.

28 F. Vicuna Hurtado

		0/1

29 G. Trelles
Maldonado

1/2		1/1
2/2	1/1	

33 F. Buitron Marcet

1/1		
	1/1	1/1

1 miss.

69 R. Alvarez Salas

TOTAL

0/1		3/3
7/8		7/10
3/3	5/5	4/5

5 post 7 miss. 3 block

Saves distribution goalkeepers

22 J. Corpus
Rodriguez

0/2		1/3
2/4	1/2	1/3
2/7	0/2	2/8

32 G. Chiarella
Chiarella

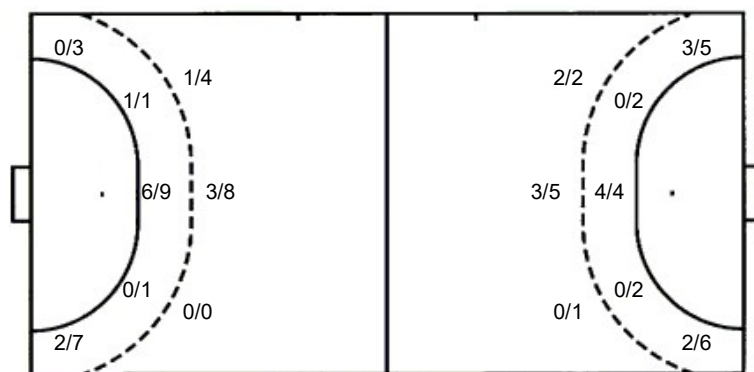
TOTAL

0/2		1/3
2/4	1/2	1/3
2/7	0/2	2/8

Shots by position

ATTACK

DEFENSE



7m penalties 4/5
Fastbreak 7/7
Breakthrough 5/5
Long dist. 0/0

7m penalties 2/2
Fastbreak 0/0
Breakthrough 7/11
Long dist. 1/1

Shooting statistics

Position	Goals	Sav.	Miss.	Post	Blk.	Total	%
Back (9m)	4	1	4	2	1	12	33
Line (6m)	7	2	0	0	2	11	64
Wing	2	2	3	3	0	10	20
7m penalties	4	1	0	0	0	5	80
Fastbreak	7	0	0	0	0	7	100
Breakthrough	5	0	0	0	0	5	100
Total	29	6	7	5	3	50	58

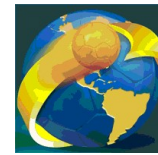
Jersey number Tot. Total shooting 6m 6m (line) shooting 9m 9m shooting Wng. Wing shooting FB Fastbreak sh. 7m 7m penalty sh.
Brk. Breakthrough sh. LD Long distance sh. As. Assists E7 Earned 7m pen. TF Technical Faults St. Steals 2m 2m punishments
C7. Committed 7m E2 Earned 2m pun. YC. Yellow cards RC Red cards BC Blue cards Blk. Blocks S Starting Line-up



IHF South and Central American Emerging Nations Ch

Colombia (Palmira)

Placement Match 3-4



Match Team Statistics

Peru 29 - 24 Guatemala

28.10.2018. 16:00

Match No. 29

(14 - 13) (15 - 11)

Attendance: 500

Sports Center Pavillon Blanco

Referees: Ines Paolantoni (ARG) / Mariana Garcia (ARG)

Guatemala

#	Surname and name	S	Goals / shots							Attack				Def.			Penalties			TP				
			Tot.	%	9m	6m	Wing	7m	FB	Brk.	LD	As.	E7	E2	TF	St.	C7	Blk	YC		2m	RC	BC	
1	AMADO DE LEÓN Ricardo Alfredo																						11:07	
3	RIVERA ALVARADO Brandon José Roberto	S	0/1	0			0/1																32:33	
5	HERRERA JUAREZ Ubaldo Antonio	S	8/10	80	4/5	0/1		2/2			2/2			2	2	3				1	1	1	48:20	
6	DE LEÓN CHÁVEZ Luis Miguel		3/3	100		1/1					1/1	1/1				1					1		14:05	
8	HERNANDEZ RAMOS Carlos Ignacio		4/4	100		2/2	2/2									1							12:25	
10	MARTÍNEZ Edwin Josué	S	1/6	17	1/1	0/2	0/1				0/2			2		2	1						34:58	
12	MARTINEZ CALVILLO Marvin Arnoldo	S																					47:28	
13	ALDI ÁVILA Estiff	S	2/6	33	0/1	0/1	2/4								1		1				1		60:00	
17	MONZON TECUN Marco Tulio	S	1/2	50	0/1	1/1									1	1	1				1		45:18	
21	ROJAS ROJAS Berny Alexander		3/4	75			0/1							3		3							43:28	
29	CONTRERAS Diego Sebastián										3/3						2						4:05	
33	SOTO HERNANDEZ Carlos Manuel																							
42	CAMEY ROCA David Enrique																						1:56	
51	MORALES ACEVEDO Boris Joaquin	S	2/5	40			1/2				1/3					4					1		60:00	
Team / bench																						1		
UKUPNO			24/41	59	5/8	4/8	5/11	2/2	0/0	7/11	1/1			7	2	3	16	1	5	0	2	4	1	1

Goalkeepers		Saves / shots								
#	Surname and name	Tot.	%	9m	6m	Wing	7m	FB	Brk.	LD
1	AMADO DE LEÓN Ricardo Alfredo	2/5	40	0/1	1/2	1/1			0/1	
12	MARTINEZ CALVILLO Marvin Arnoldo	4/30	13	1/4	1/7	1/3	1/5	0/7	0/4	
TOTAL		6/35	17	1/5	2/9	2/4	1/5	0/7	0/5	0/0

Coach: **Gelio David Arana Cancinos**

Number of attacks: 59, Efficiency: 41%, Average Duration: 29,3 seconds

Attack by type of defense

	Shots	9m	6m	Wing	TF	E7	E2
On def. 6-0	2/2	0/0	1/1	1/1	0	0	0
On def. 5-1	10/20	1/3	1/3	3/6	10	2	2
On def. 4-2	5/12	2/3	1/3	0/3	4	0	0
On def. 3-3	4/4	2/2	1/1	1/1	2	0	1
Fastbreak	0/0				0	0	0

Defense by type

	Total	9m	6m	Wing	Stl.	C7	2m
Def. 6-0	11/26	2/8	5/9	1/6	0	3	2
Def. 5-1	7/12	2/4	2/2	1/4	0	2	2
Def. 4-2	0/0	0/0	0/0	0/0	1	0	0
Fastbreak	7/7				0	0	0

Attack with goalkeeper out

	Attack				Reaction		
	Att.	Eff.	Shots	TF	FB	LD	Tot.
GK in	59	41%	24/41	16	7/7	0/0	7/7

GK out attack is counted if one part or whole attack was GK out

Defense with opponent goalkeeper out

	Attack				Reaction		
	Att.	Eff.	Shots	TF	FB	LD	Tot.
GK out (7 on 6)	7	71%	5/6	0	0/0	1/1	1/1
GK out pl. super.	1	100%	1/1	0	0/0	0/0	0/0
GK in	50	46%	23/43	10	0/0	0/0	0/0

Attack with player superiority/minority

	Attack				Reaction		
	Att.	Eff.	Shots	TF	FB	LD	Tot.
Superiority +1	6	67%	4/6	1	0/0	0/0	0/0
Normal	15	33%	5/11	5	2/2	0/0	2/2
Minority -1	2	0%	0/1	1	1/1	0/0	1/1
Minority -2	2	0%	0/1	0	0/0	0/0	0/0
Minority -3	1	0%	0/0	0	1/1	0/0	1/1

Player superiority counted at the end of attack (in case it changes during attack)

Defense with player superiority/minority

	Attack				Reaction		
	Att.	Eff.	Shots	TF	FB	LD	Tot.
Minority -3	1	100%	1/1	0	0/0	0/0	0/0
Minority -2	1	0%	0/0	1	0/0	0/0	0/0
Minority -1	3	67%	2/3	0	0/0	0/0	0/0
Normal	15	47%	7/14	2	0/0	1/1	1/1
Superiority +1	5	100%	5/6	0	0/0	0/0	0/0

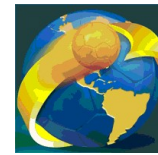
Jersey number
 Brk. Breakthrough sh.
 C7. Committed 7m
 E2 Earned 2m pun.
 Tot. Total shooting
 LD Long distance sh.
 E2 Earned 2m pun.
 YC. Yellow cards
 RC Red cards
 6m 6m (line) shooting
 As. Assists
 YC. Yellow cards
 9m 9m shooting
 E7 Earned 7m pen.
 RC Red cards
 Wng. Wing shooting
 TF Technical Faults
 BC Blue cards
 FB Fastbreak sh.
 St. Steals
 Blk. Blocks
 7m 7m penalty sh.
 2m 2m punishments
 S Starting Line-up



IHF South and Central American Emerging Nations Ch

Colombia (Palmira)

Placement Match 3-4



Match Team Statistics
Match No. 29

Peru 29 - 24 Guatemala
(14 - 13) (15 - 11)

28.10.2018. 16:00
Attendance: 500
Sports Center Pavillon Blanco

Referees: Ines Paolantoni (ARG) / Mariana Garcia (ARG)

Shot distribution by player

3 B. Rivera Alvarado

1 miss.

5 U. Herrera Juarez

2/2		1/1
		0/1
1/1	1/1	3/3

1 block

6 L. De León Chávez

	1/1	1/1
1/1		

8 C. Hernández Ramos

		1/1
		1/1
		1/1

1/1 lob

10 E. Martínez

1/2		0/2

1 post 1 miss.

13 E. Aldi Ávila

1/3	0/1	
		1/1

1 post

17 M. Monzón Tecún

		1/1

1 miss.

21 B. Rojas Rojas

1/1		
1/1	1/1	

1 miss.

29 D. Contreras

33 C. Soto Hernandez

42 D. Camey Roca

51 B. Morales Acevedo

		0/1
1/2		

1 post 1/1 lob

TOTAL

2/2		2/3
2/4	1/2	2/3
5/7	2/2	6/8

3 post 4 miss. 1 block 2/2 lob

Saves distribution goalkeepers

1 R. Amado De León

1/1		
0/3		1/1

12 M. Martinez Calvillo

		0/3
1/5		2/9
0/3	0/5	1/5

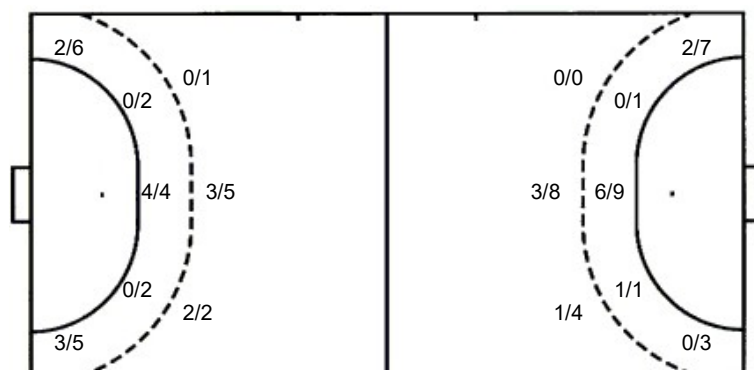
TOTAL

1/1		0/3
1/8		3/10
0/3	0/5	1/5

Shots by position

ATTACK

DEFENSE



7m penalties 2/2
Fastbreak 0/0
Breakthrough 7/11
Long dist. 1/1

7m penalties 4/5
Fastbreak 7/7
Breakthrough 5/5
Long dist. 0/0

Shooting statistics

Position	Goals	Sav.	Miss.	Post	Blk.	Total	%
Back (9m)	5	0	1	1	1	8	63
Line (6m)	4	3	1	0	0	8	50
Wing	5	3	2	1	0	11	45
7m penalties	2	0	0	0	0	2	100
Fastbreak	0	0	0	0	0	0	0
Breakthrough	7	3	0	1	0	11	64
Total	23	9	4	3	1	40	58