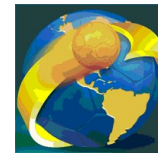




IHF South and Central American Emerging Nations Ch

Colombia (Palmira)

Placement round 9-11. place



Match Team Statistics

Panama 21 - 38 Bolivia

28.10.2018. 10:00

Match No. 26

(11 - 19) (10 - 19)

Attendance: 100

Sports Center Pavillon Blanco

Referees: Marcelo Moraga (CHI) / Matias Zavalla (CHI)

Panama

#	Surname and name	S	Goals / shots								Attack			Def.			Penalties			TP			
			Tot.	%	9m	6m	Wing	7m	FB	Brk.	LD	As.	E7	E2	TF	St.	C7	Blk	YC		2m	RC	BC
1	CATUY A Cristian A													1									36:47
2	JARAMILLO MARTINEZ Rodrigo		6/12	50	1/4	2/2	0/1			2/2	1/3			1	5	3	2			2			51:13
3	LOPEZ U Anel A													1									5:38
4	BOSQUEZ R Denilson J												1	1	2	1			1			13:28	
5	SANCHEZ PEREZ Carlos		1/2	50		0/1	1/1						1	1		1						24:39	
6	YOUNG P Roberto A		2/3	67		2/2						0/1	1		2	1						23:55	
7	SANCHEZ A Navid G		1/1	100		1/1								2								3:53	
8	ARRIETA M Alexis G	S	3/8	38		1/4				1/1	1/3			4	3	1			1			44:29	
9	ANDERSON A Samuel A	S	1/1	100		1/1								4	1	1			1			47:01	
10	VERGARA V Edwin L	S	3/5	60	3/5							3		1	7		2		1	1		44:52	
11	GARCIA A Fernando A	S	1/2	50		1/2																16:15	
12	ARROCHA G Oriel H	S	3/7	43	0/2	2/4				1/1				4	1					2		46:35	
13	MC ZENO W Adonay M	S	0/2	0	0/1	0/1								4								38:02	
16	CHAVEZ R Manuel E	S																				23:13	
	Team / bench																						
	UKUPNO		21/43	49	4/12	10/18	1/2	0/0	3/3	3/7	0/1		6	0	2	36	11	8	0	1	8	0	0

#	Surname and name	Saves / shots								
		Tot.	%	9m	6m	Wing	7m	FB	Brk.	LD
1	CATUY A Cristian A	7/31	23	0/1	3/11	2/5	0/5	0/4	2/5	
16	CHAVEZ R Manuel E	2/16	13	0/2	0/3	1/3	0/2	1/4	0/2	
	TOTAL	9/47	19	0/3	3/14	3/8	0/7	1/8	2/7	0/0

Coach: Adrian A Juarez E

Number of attacks: 81, Efficiency: 26%, Average Duration: 23,9 seconds

Attack by type of defense

	Shots	9m	6m	Wing	TF	E7	E2
On def. 6-0	17/37	4/12	10/18	1/2	34	0	2
On def. 4-2	1/2	0/0	0/0	0/0	2	0	0
Fastbreak	3/3				0	0	0

Defense by type

	Total	9m	6m	Wing	Stl.	C7	2m
Def. 6-0	24/34	3/3	11/15	5/9	11	8	8
Fastbreak	7/8				0	0	0

Attack with goalkeeper out

	Attack				Reaction		
	Att.	Eff.	Shots	TF	FB	LD	Tot.
GK out pl. minority	1	100%	1/1	0	0/0	0/0	0/0
GK in	80	25%	20/42	36	7/8	0/0	7/8

GK out attack is counted if one part or whole attack was GK out

Defense with opponent goalkeeper out

	Attack				Reaction		
	Att.	Eff.	Shots	TF	FB	LD	Tot.
GK out (7 on 6)	2	50%	1/1	1	0/0	0/0	0/0
GK out pl. super.	1	0%	0/1	1	0/0	0/0	0/0
GK in	77	48%	37/48	32	3/3	0/1	3/4

Attack with player superiority/minority

	Attack				Reaction		
	Att.	Eff.	Shots	TF	FB	LD	Tot.
Superiority +1	9	33%	3/4	5	1/1	0/0	1/1
Normal	47	26%	12/28	20	3/4	0/0	3/4
Minority -1	17	18%	3/7	7	2/2	0/0	2/2
Minority -2	3	33%	1/1	2	0/0	0/0	0/0

Player superiority counted at the end of attack (in case it changes during attack)

Defense with player superiority/minority

	Attack				Reaction		
	Att.	Eff.	Shots	TF	FB	LD	Tot.
Minority -2	4	50%	2/3	1	0/0	0/0	0/0
Minority -1	19	53%	10/12	7	0/0	0/1	0/1
Normal	41	44%	18/26	19	3/3	0/0	3/3
Superiority +1	10	50%	5/6	4	0/0	0/0	0/0

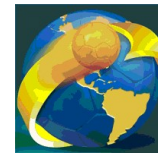
Jersey number Tot. Total shooting 6m 6m (line) shooting 9m 9m shooting Wng. Wing shooting FB Fastbreak sh. 7m 7m penalty sh.
 Brk. Breakthrough sh. LD Long distance sh. As. Assists E7 Earned 7m pen. TF Technical Faults St. Steals 2m 2m punishments
 C7. Committed 7m E2 Earned 2m pun. YC. Yellow cards RC Red cards BC Blue cards Blk. Blocks S Starting Line-up



IHF South and Central American Emerging Nations Ch

Colombia (Palmira)

Placement round 9-11. place



Match Team Statistics

Match No. 26

Panama 21 - 38 Bolivia

(11 - 19) (10 - 19)

28.10.2018. 10:00

Attendance: 100

Sports Center Pavillon Blanco

Referees: Marcelo Moraga (CHI) / Matias Zavalla (CHI)

Shot distribution by player

2 R. Jaramillo

0/1	1/1	
1/1		1/1
1/1	0/1	1/2

1 post 2 miss. 1/1 lob

3 A. Lopez U

4 D. Bosquez R

5 C. Sanchez Perez

		1/1

1 block

6 R. Young P

1/1	0/1	
	1/1	

7 N. Sanchez A

		1/1

8 A. Arrieta M

	0/1	
1/1	0/1	
2/2		

2 post 1 miss.

9 S. Anderson A

1/1		

10 E. Vergara V

1/1		
2/2	0/1	0/1

11 F. Garcia A

1/1		0/1

12 O. Arrocha G

1/1	1/1	
1/1		0/1

1 post 1 miss. 1 block

13 A. MC Zeno W

0/1	0/1	

TOTAL

1/2	1/3	
4/4	1/2	2/2
8/9	1/4	2/6

4 post 4 miss. 2 block 1/1 lob

Saves distribution goalkeepers

1 C. Catuy A

1/8	1/2	1/2
3/13	0/1	1/5

16 M. Chavez R

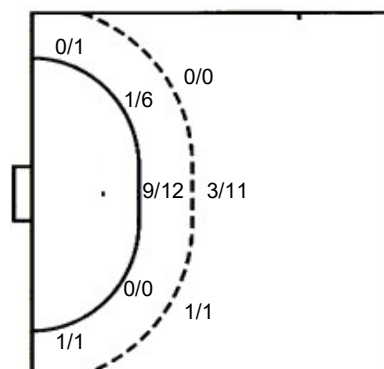
		0/1
		1/7
0/1		1/5

TOTAL

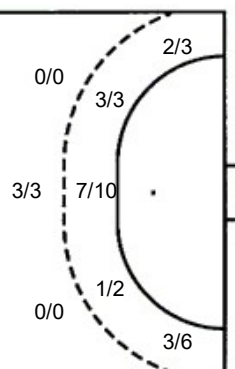
		0/1
1/8	1/2	2/9
3/14	0/1	2/10

Shots by position

ATTACK



DEFENSE



7m penalties 0/0
Fastbreak 3/3
Breakthrough 3/7
Long dist. 0/1

7m penalties 7/8
Fastbreak 7/8
Breakthrough 5/7
Long dist. 0/0

Shooting statistics

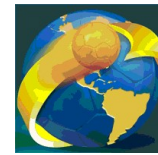
Position	Goals	Sav.	Miss.	Post	Blk.	Total	%
Back (9m)	4	5	1	2	0	12	33
Line (6m)	10	5	1	0	2	18	56
Wing	1	0	1	0	0	2	50
7m penalties	0	0	0	0	0	0	0
Fastbreak	3	0	0	0	0	3	100
Breakthrough	3	1	1	2	0	7	43
Total	21	11	4	4	2	42	50



IHF South and Central American Emerging Nations Ch

Colombia (Palmira)

Placement round 9-11. place



Match Team Statistics

Panama 21 - 38 Bolivia

28.10.2018. 10:00

Match No. 26

(11 - 19) (10 - 19)

Attendance: 100

Sports Center Pavillon Blanco

Referees: Marcelo Moraga (CHI) / Matias Zavalla (CHI)

Bolivia

#	Surname and name	S	Goals / shots								Attack			Def.			Penalties			TP				
			Tot.	%	9m	6m	Wing	7m	FB	Brk.	LD	As.	E7	E2	TF	St.	C7	Blk	YC		2m	RC	BC	
3	JULIAN MERCADO Joel	S																					47:49	
4	SERRUDO Diego Bryan		3/4	75			1/2	2/2						1	2	1								16:28
7	ZURITA HUAYTA Carlos Gilmar	S	2/3	67			1/1	1/1	0/1															14:44
9	ROSALES GILDRES Herbert Fernando																							12:11
10	CHILACA Martin Miguel	S	2/2	100					2/2					4			10	1						58:27
11	ROJAS MORALES Jose Maria Huascar		4/7	57		4/7									3	4	2					1		34:45
14	CANAZA QUISPE Pablo	S	4/7	57		1/2	1/2							3	1		4	1						53:32
15	ROJAS MORALES Tomas Sebastian		5/6	83		2/2	1/2	2/2						2			2				1	1	1	45:17
20	FERNANDEZ Eddy		3/4	75				0/1	3/3							1	2	1					1	25:58
23	LIMA MONTERO Alejandro Chein		1/1	100					1/1								1	1						6:28
24	LISIDRO QUISPE Arturo Efrain	S	9/9	100	2/2	1/1	1/1	2/2	1/1	2/2				3			2	1						42:28
26	SIERRAALTA Alex Jhomar Mamani	S	0/1	0			0/1								1	1	3							11:34
77	CRESPO GUTIERREZ Jorge Orlando	S	5/6	83	1/1	3/3								2	1		6	2			1			46:20
99	CHOQUE PALAPE Arnold Jhordan																							3:59
Team / bench																								
UKUPNO			38/50	76	3/3	11/15	5/9	7/8	7/8	5/7	0/0	15	8	7	34	7	0	2	1	3	0	0		

#	Surname and name	Saves / shots								
		Tot.	%	9m	6m	Wing	7m	FB	Brk.	LD
3	JULIAN MERCADO Joel	4/10	40	1/1	3/8			0/1		
9	ROSALES GILDRES Herbert Fernando	8/23	35	4/8	2/7	0/1		0/2	1/4	1/1
TOTAL		12/33	36	5/9	5/15	0/1	0/0	1/3	1/4	1/1

Coach:

Number of attacks: 80, Efficiency: 48%, Average Duration: 20,8 seconds

Attack by type of defense

	Shots	9m	6m	Wing	TF	E7	E2
On def. 6-0	24/34	3/3	11/15	5/9	34	8	7
Fastbreak	7/8				0	0	0

Defense by type

	Total	9m	6m	Wing	Stl.	C7	2m
Def. 6-0	17/37	4/12	10/18	1/2	7	0	3
Def. 4-2	1/2	0/0	0/0	0/0	0	0	0
Fastbreak	3/3				0	0	0

Attack with goalkeeper out

	Attack				Reaction		
	Att.	Eff.	Shots	TF	FB	LD	Tot.
GK out (7 on 6)	2	50%	1/1	1	0/0	0/0	0/0
GK out pl. minority	1	0%	0/1	1	0/0	0/0	0/0
GK in	77	48%	37/48	32	3/3	0/1	3/4

GK out attack is counted if one part or whole attack was GK out

Defense with opponent goalkeeper out

	Attack				Reaction		
	Att.	Eff.	Shots	TF	FB	LD	Tot.
GK out (7 on 6)	0	0%	0/0	0	0/0	0/0	0/0
GK in	80	25%	20/42	36	7/8	0/0	7/8

Attack with player superiority/minority

	Attack				Reaction		
	Att.	Eff.	Shots	TF	FB	LD	Tot.
Superiority +2	4	50%	2/3	1	0/0	0/0	0/0
Superiority +1	19	53%	10/12	7	0/0	0/1	0/1
Normal	41	44%	18/26	19	3/3	0/0	3/3
Minority -1	10	50%	5/6	4	0/0	0/0	0/0

Player superiority counted at the end of attack (in case it changes during attack)

Defense with player superiority/minority

	Attack				Reaction		
	Att.	Eff.	Shots	TF	FB	LD	Tot.
Minority -1	9	33%	3/4	5	1/1	0/0	1/1
Normal	47	26%	12/28	20	3/4	0/0	3/4
Superiority +1	17	18%	3/7	7	2/2	0/0	2/2
Superiority +2	3	33%	1/1	2	0/0	0/0	0/0

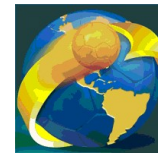
Jersey number Tot. Total shooting 6m 6m (line) shooting 9m 9m shooting Wng. Wing shooting FB Fastbreak sh. 7m 7m penalty sh.
 Brk. Breakthrough sh. LD Long distance sh. As. Assists E7 Earned 7m pen. TF Technical Faults St. Steals 2m 2m punishments
 C7. Committed 7m E2 Earned 2m pun. YC. Yellow cards RC Red cards BC Blue cards Blk. Blocks S Starting Line-up



IHF South and Central American Emerging Nations Ch

Colombia (Palmira)

Placement round 9-11. place



Match Team Statistics

Match No. 26

Panama 21 - 38 Bolivia

(11 - 19) (10 - 19)

28.10.2018. 10:00

Attendance: 100

Sports Center Pavillon Blanco

Referees: Marcelo Moraga (CHI) / Matias Zavalla (CHI)

Shot distribution by player

4 D. Serrudo

		0/1
1/1		1/1

1/1 lob

7 C. Zurita Huayta

1/1		0/1

1/1 lob

10 M. Chilaca

		1/1
1/1		

1/1

11 J. Rojas Morales

2/2	0/1	1/2
	1/1	

1 post

14 P. Canaza Quispe

1/1		1/1
2/4		0/1

15 T. Rojas Morales

2/3	1/1	
1/1		1/1

20 E. Fernandez

		1/1
2/2		

1 miss.

23 A. Lima Montero

		1/1

24 A. Lisidro Quispe

1/1		1/1
2/2		5/5

26 A. Sierraalta

1 post

77 J. Crespo Gutierrez

1/1		3/3
1/2		

99 A. Choque Palape

TOTAL

		1/1
7/8	1/2	7/9
11/14	1/1	8/10

2 post 1 miss. 2/2 lob

Saves distribution goalkeepers

3 J. Julián Mercado

1/2	1/1	
		0/1
0/2	0/1	2/2

9 H. Rosales Gildres

	1/2	
0/4	1/2	0/1
1/7	3/3	2/4

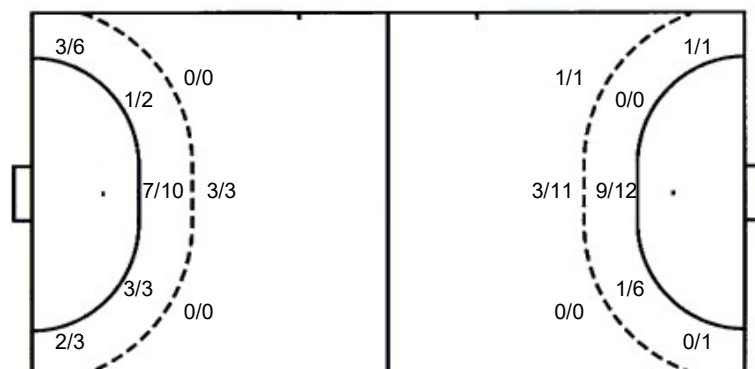
TOTAL

1/2	2/3	
0/4	1/2	0/2
1/9	3/4	4/6

Shots by position

ATTACK

DEFENSE



7m penalties 7/8
Fastbreak 7/8
Breakthrough 5/7
Long dist. 0/0

7m penalties 0/0
Fastbreak 3/3
Breakthrough 3/7
Long dist. 0/1

Shooting statistics

Position	Goals	Sav.	Miss.	Post	Blk.	Total	%
Back (9m)	3	0	0	0	0	3	100
Line (6m)	11	3	0	1	0	15	73
Wing	5	3	0	1	0	9	56
7m penalties	7	0	1	0	0	8	88
Fastbreak	7	1	0	0	0	8	88
Breakthrough	5	2	0	0	0	7	71
Total	38	9	1	2	0	50	76