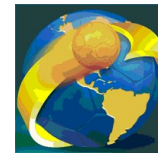




# IHF South and Central American Emerging Nations Ch

Colombia (Palmira)

Placement round 9-11. place



Match Team Statistics

**Panama 28 - 31 El Salvador**

27.10.2018. 10:00

Match No. 21

(16 - 11) (12 - 20)

Attendance: 200

Sports Center Pavillon Blanco

Referees: Jean M. Segura (CRC) / Gerardo Valverde (CRC)

## Panama

#	Surname and name	S	Goals / shots									Attack				Def.			Penalties			TP					
			Tot.	%	9m	6m	Wing	7m	FB	Brk.	LD	As.	E7	E2	TF	St.	C7	Bik	YC	2m	RC		BC				
1	CATUY A Cristian A																										54:17
2	JARAMILLO MARTINEZ Rodrigo	S	8/16	50		4/7	2/6	1/1	1/1	0/1					1		4	1									35:28
3	LOPEZ U Anel A																										
4	BOSQUEZ R Denilson J																										10:23
5	SANCHEZ PEREZ Carlos		0/1	0		0/1											2		2								24:03
6	YOUNG P Roberto A		1/3	33		1/3											3	1	1								40:12
7	SANCHEZ A Navid G																		1						1		3:12
8	ARRIETA M Alexis G	S	3/5	60		1/2				1/2	1/1						4		3								55:35
9	ANDERSON A Samuel A	S	0/1	0		0/1												1	1						2		26:13
10	VERGARA V Edwin L	S	6/12	50	1/3	3/7					2/2					1		5						1			57:43
11	GARCIA A Fernando A																	1									13:37
12	ARROCHA G Oriel H	S	8/13	62	2/5	3/4					3/4						5		3	3							47:20
13	MC ZENO W Adonay M	S	2/5	40	0/1	1/3					1/1							1	1	1							44:06
16	CHAVEZ R Manuel E	S																							1		7:51
	Team / bench																										
	UKUPNO		28/56	50	3/9	13/28	2/6	1/1	6/8	3/4	0/0				13	1	0	23	10	6	0	1	5	1	0		

Goalkeepers		Saves / shots									
#	Surname and name	Tot.	%	9m	6m	Wing	7m	FB	Brk.	LD	
1	CATUY A Cristian A	12/42	29	0/1	5/18	2/8	3/5	0/4	2/6		
16	CHAVEZ R Manuel E	1/2	50	1/1					0/1		
	TOTAL	13/44	30	1/2	5/18	2/8	3/5	0/4	2/7	0/0	

Coach: Adrian A Juarez E

Number of attacks: 72, Efficiency: 39%, Average Duration: 30,6 seconds

### Attack by type of defense

	Shots	9m	6m	Wing	TF	E7	E2
On def. 6-0	13/28	1/4	8/17	2/4	11	1	0
On def. 5-1	8/19	2/5	5/11	0/2	11	0	0
On def. press.	0/0	0/0	0/0	0/0	1	0	0
Fastbreak	6/8				0	0	0

### Defense by type

	Total	9m	6m	Wing	Stl.	C7	2m
Def. 6-0	25/36	1/1	13/19	6/9	5	5	4
Def. 5-1	0/2	0/1	0/1	0/0	4	1	1
Def. press.	0/0	0/0	0/0	0/0	1	0	0
Fastbreak	4/5				0	0	0

### Attack with goalkeeper out

	Attack				Reaction		
	Att.	Eff.	Shots	TF	FB	LD	Tot.
GK in	72	39%	28/56	23	4/5	0/0	4/5

GK out attack is counted if one part or whole attack was GK out

### Defense with opponent goalkeeper out

	Attack				Reaction		
	Att.	Eff.	Shots	TF	FB	LD	Tot.
GK in	72	43%	31/49	25	6/8	0/0	6/8

### Attack with player superiority/minority

	Attack				Reaction		
	Att.	Eff.	Shots	TF	FB	LD	Tot.
Superiority +1	4	75%	3/4	0	0/0	0/0	0/0
Normal	47	40%	19/33	18	2/3	0/0	2/3
Minority -1	15	27%	4/15	3	2/2	0/0	2/2

Player superiority counted at the end of attack (in case it changes during attack)

### Defense with player superiority/minority

	Attack				Reaction		
	Att.	Eff.	Shots	TF	FB	LD	Tot.
Minority -1	15	53%	8/16	2	0/0	0/0	0/0
Normal	49	45%	22/29	19	4/6	0/0	4/6
Superiority +1	3	0%	0/2	1	2/2	0/0	2/2

# Jersey number Tot. Total shooting 6m 6m (line) shooting 9m 9m shooting Wng. Wing shooting FB Fastbreak sh. 7m 7m penalty sh.  
 Brk. Breakthrough sh. LD Long distance sh. As. Assists E7 Earned 7m pen. TF Technical Faults St. Steals 2m 2m punishments  
 C7. Committed 7m E2 Earned 2m pun. YC. Yellow cards RC Red cards BC Blue cards Blk. Blocks S Starting Line-up



# IHF South and Central American Emerging Nations Ch

## Colombia (Palmira)

Placement round 9-11. place



### Match Team Statistics

Match No. 21

### Panama 28 - 31 El Salvador

(16 - 11) (12 - 20)

27.10.2018. 10:00

Attendance: 200

Sports Center Pavillon Blanco

Referees: Jean M. Segura (CRC) / Gerardo Valverde (CRC)

### Shot distribution by player

#### 2 R. Jaramillo Martinez

4/8	0/1	1/2
2/3	0/1	1/1

#### 3 A. Lopez U


#### 4 D. Bosquez R


#### 5 C. Sanchez Perez

0/1		

#### 6 R. Young P

		1/1

2 miss.

#### 7 N. Sanchez A


#### 8 A. Arrieta M

0/1		3/3
	0/1	

#### 9 S. Anderson A

0/1		

#### 10 E. Vergara V

1/1	0/1	3/4
		1/1

3 miss. 1 block 1/1 lob

#### 11 F. Garcia A


#### 12 O. Arrocha G

1/1		
0/1		1/1
1/1	2/3	3/3

2 post 1 block

#### 13 A. MC Zeno W

1/3		1/1

1 miss.

#### TOTAL

1/1		
6/15	0/2	10/12
3/5	2/5	5/5

2 post 6 miss. 2 block 1/1 lob

### Saves distribution goalkeepers

#### 1 C. Catuy A

0/1		2/3
2/8	2/2	1/6
0/7	3/6	2/7

#### 16 M. Chavez R

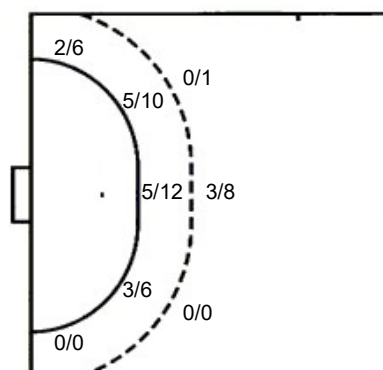
0/1		
	1/1	

#### TOTAL

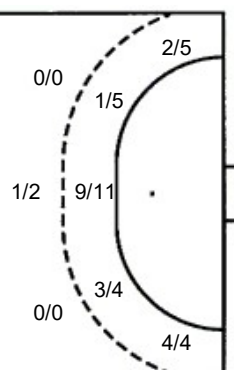
0/1		2/3
2/9	2/2	1/6
0/7	4/7	2/7

### Shots by position

#### ATTACK



#### DEFENSE



7m penalties 1/1  
Fastbreak 6/8  
Breakthrough 3/4  
Long dist. 0/0

7m penalties 2/6  
Fastbreak 4/5  
Breakthrough 5/7  
Long dist. 0/0

### Shooting statistics

Position	Goals	Sav.	Miss.	Post	Blk.	Total	%
Back (9m)	3	2	0	2	2	9	33
Line (6m)	13	9	6	0	0	28	46
Wing	2	4	0	0	0	6	33
7m penalties	1	0	0	0	0	1	100
Fastbreak	6	2	0	0	0	8	75
Breakthrough	3	1	0	0	0	4	75
<b>Total</b>	<b>28</b>	<b>18</b>	<b>6</b>	<b>2</b>	<b>2</b>	<b>56</b>	<b>50</b>

# Jersey number Tot. Total shooting 6m 6m (line) shooting 9m 9m shooting Wng. Wing shooting FB Fastbreak sh. 7m 7m penalty sh.  
Brk. Breakthrough sh. LD Long distance sh. As. Assists E7 Earned 7m pen. TF Technical Faults St. Steals 2m 2m punishments  
C7. Committed 7m E2 Earned 2m pun. YC. Yellow cards RC Red cards BC Blue cards Blk. Blocks S Starting Line-up



## IHF South and Central American Emerging Nations Ch Colombia (Palmira) Placement round 9-11. place



Match Team Statistics  
Match No. 21

### Panama 28 - 31 El Salvador

(16 - 11) (12 - 20)

27.10.2018. 10:00  
Attendance: 200  
Sports Center Pavillon Blanco

Referees: Jean M. Segura (CRC) / Gerardo Valverde (CRC)

### El Salvador

#	Surname and name	S	Goals / shots								Attack				Def.			Penalties			TP			
			Tot.	%	9m	6m	Wing	7m	FB	Brk.	LD	As.	E7	E2	TF	St.	C7	Blk	YC	2m		RC	BC	
1	LOPEZ AVELAR Fernando Jose																							7:34
2	CANAS ABREGO Joel Alejandro		1/1	100		1/1							1											32:33
3	MONTES RODRIGUEZ Jose Omar	S	1/3	33		1/2			0/1					2	1		1							23:15
5	RAMOS SOSA Juan Armando	S																						26:05
7	CHOTO MOLINA Oscar Alexander		1/2	50		1/1							0/1	6			6							47:01
10	ESCALANTE VASQUEZ Jorge Luis		3/7	43	1/1		2/5	0/1					1	1	1	3	1							38:11
14	SOSA ABARCA Heraldo Stephan		8/11	73		6/8		1/1	1/1	0/1			3			3								60:00
16	HERNANDEZ GONZALEZ Vladimir Alejandro	S											1			1	1							4:58
23	LOPEZ ALVAREZ Carlos Alejandro	S																						25:15
24	SERRANO HERRERA Jonathan Josue		1/2	50					1/2							1			1					36:12
27	ARAUJO AQUINO Luis Enrique	S	5/6	83		1/2	4/4						1	1	2				1					43:54
46	APARICIO ROMERO Jaime Fernando		4/6	67	0/1	1/2			1/1	2/2			4			2								15:02
77	FLORES MORENO Hector Santiago	S	0/1	0		0/1																		60:00
96	ESPINOZA RAMOS Ricardo Adolfo	S	7/10	70		2/3		1/3	1/1	3/3			2	3	2	6		1						
Team / bench																								
UKUPNO			31/49	63	1/2	13/20	6/9	2/6	4/5	5/7	0/0		19	6	5	25	2	1	0	1	1	0	0	0

Goalkeepers		Saves / shots									
#	Surname and name	Tot.	%	9m	6m	Wing	7m	FB	Brk.	LD	
1	LOPEZ AVELAR Fernando Jose										
16	HERNANDEZ GONZALEZ Vladimir Alejandro	18/46	39	2/5	9/22	4/6	0/1	2/8	1/4		
<b>TOTAL</b>		18/46	39	2/5	9/22	4/6	0/1	2/8	1/4	0/0	

Coach: **Eduardo Adonay Guillen Candray**

Number of attacks: 72, Efficiency: 43%, Average Duration: 19,4 seconds

### Attack by type of defense

	Shots	9m	6m	Wing	TF	E7	E2
<b>On def. 6-0</b>	25/36	1/1	13/19	6/9	24	5	4
<b>On def. 5-1</b>	0/2	0/1	0/1	0/0	1	1	1
<b>On def. press.</b>	0/0	0/0	0/0	0/0	0	0	0
<b>Fastbreak</b>	4/5				0	0	0

### Defense by type

	Total	9m	6m	Wing	Stl.	C7	2m
<b>Def. 6-0</b>	13/28	1/4	8/17	2/4	2	1	1
<b>Def. 5-1</b>	8/19	2/5	5/11	0/2	0	0	0
<b>Def. press.</b>	0/0	0/0	0/0	0/0	0	0	0
<b>Fastbreak</b>	6/8				0	0	0

### Attack with goalkeeper out

	Attack				Reaction		
	Att.	Eff.	Shots	TF	FB	LD	Tot.
<b>GK in</b>	72	43%	31/49	25	6/8	0/0	6/8

GK out attack is counted if one part or whole attack was GK out

### Defense with opponent goalkeeper out

	Attack				Reaction		
	Att.	Eff.	Shots	TF	FB	LD	Tot.
<b>GK in</b>	72	39%	28/56	23	4/5	0/0	4/5

### Attack with player superiority/minority

	Attack				Reaction		
	Att.	Eff.	Shots	TF	FB	LD	Tot.
<b>Superiority +1</b>	15	53%	8/16	2	0/0	0/0	0/0
<b>Normal</b>	49	45%	22/29	19	4/6	0/0	4/6
<b>Minority -1</b>	3	0%	0/2	1	2/2	0/0	2/2

Player superiority counted at the end of attack (in case it changes during attack)

### Defense with player superiority/minority

	Attack				Reaction		
	Att.	Eff.	Shots	TF	FB	LD	Tot.
<b>Minority -1</b>	4	75%	3/4	0	0/0	0/0	0/0
<b>Normal</b>	47	40%	19/33	18	2/3	0/0	2/3
<b>Superiority +1</b>	15	27%	4/15	3	2/2	0/0	2/2

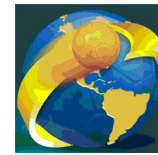
#	Jersey number	Tot.	Total shooting	6m	6m (line) shooting	9m	9m shooting	Wng.	Wing shooting	FB	Fastbreak sh.	7m	7m penalty sh.
Brk.	Breakthrough sh.	LD	Long distance sh.	As.	Assists	E7	Earned 7m pen.	TF	Technical Faults	St.	Steals	2m	2m punishments
C7.	Committed 7m	E2	Earned 2m pun.	YC.	Yellow cards	RC	Red cards	BC	Blue cards	Blk.	Blocks	S	Starting Line-up



# IHF South and Central American Emerging Nations Ch

## Colombia (Palmira)

Placement round 9-11. place



### Match Team Statistics

Match No. 21

### Panama 28 - 31 El Salvador

(16 - 11) (12 - 20)

27.10.2018. 10:00

Attendance: 200

Sports Center Pavillon Blanco

Referees: Jean M. Segura (CRC) / Gerardo Valverde (CRC)

### Shot distribution by player

#### 2 J. Canas Abrego

	1/1	

#### 3 J. Montes Rodriguez

		1/1
	0/1	0/1

#### 5 J. Ramos Sosa


#### 7 O. Choto Molina

	1/1	0/1

#### 10 J. Escalante Vasquez

	0/1	0/1
	0/1	3/3

1 post

#### 14 H. Sosa Abarca

		0/1
2/3		3/3
1/1		1/1

1 post 1/1 lob

#### 23 C. Lopez Alvarez


#### 24 J. Serrano Herrera

		1/1

1 miss.

#### 27 L. Araujo Aquino

2/3		
3/3		

#### 46 J. Aparicio Romero

2/2	1/3	1/1

#### 77 H. Flores Moreno

		0/1

#### 96 R. Espinoza Ramos

1/1		
3/3	0/1	1/1
1/1		

1 post 1 miss. 1/1 lob

#### TOTAL

1/1		1/3
7/9	0/2	5/6
7/7	3/7	5/7

3 post 2 miss. 2/2 lob

### Saves distribution goalkeepers

#### 1 F. Lopez Avelar


#### 16 V. Hernandez Gonzalez

0/1		
9/15	2/2	2/12
2/5	3/5	0/5

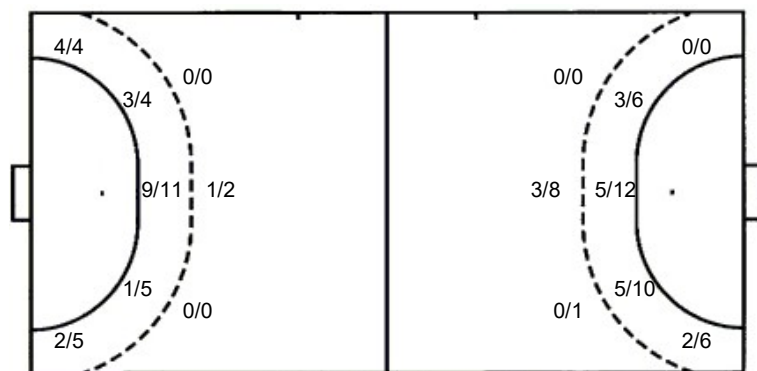
#### TOTAL

0/1		
9/15	2/2	2/12
2/5	3/5	0/5

### Shots by position

#### ATTACK

#### DEFENSE



7m penalties 2/6  
Fastbreak 4/5  
Breakthrough 5/7  
Long dist. 0/0

7m penalties 1/1  
Fastbreak 6/8  
Breakthrough 3/4  
Long dist. 0/0

### Shooting statistics

Position	Goals	Sav.	Miss.	Post	Blk.	Total	%
Back (9m)	1	1	0	0	0	2	50
Line (6m)	13	5	1	1	0	20	65
Wing	6	2	0	1	0	9	67
7m penalties	2	3	0	1	0	6	33
Fastbreak	4	0	1	0	0	5	80
Breakthrough	5	2	0	0	0	7	71
<b>Total</b>	<b>31</b>	<b>13</b>	<b>2</b>	<b>3</b>	<b>0</b>	<b>49</b>	<b>63</b>