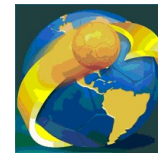




# IHF South and Central American Emerging Nations Ch

## Colombia (Palmira)

### Quarterfinal



Match Team Statistics  
Match No. 18

**Ecuador 31 - 32 Peru**  
(15 - 15) (16 - 17)

26.10.2018. 14:00  
Attendance: 350  
Sports Center Pavillon Blanco

Referees: Ines Paolantoni (ARG) / Mariana Garcia (ARG)

### Ecuador

#	Surname and name	S	Goals / shots								Attack				Def.			Penalties			TP		
			Tot.	%	9m	6m	Wing	7m	FB	Brk.	LD	As.	E7	E2	TF	St.	C7	Blk	YC	2m		RC	BC
1	CARDENAS CHAVEZ Mauro Miguel																						
3	PANTALEÓN OVIEDO Isaias Daniel	S	4/10	40			0/4	1/1	1/1	2/4			2		1	3		1			1		60:00
4	CORNEJO CAICEDO Luis Antonio														1								3:28
5	QUINTERO PINCAY Ronny Benigno																			2			7:53
6	BAJANA ZAMBRANO Joseph Daniel																			2	1		5:36
7	LITARDO SOSA Gerdy Elky	S	7/10	70	0/1			3/3		4/6			1	1	4		1						58:57
8	DOMINGUEZ GALARZA Jefferson Ricardo	S	3/4	75		1/1				2/3			1		3		1				1		34:15
9	QUINONEZ AYOVÍ Eduardo Marconi		5/6	83	2/3			1/1	1/1	1/1			2		4		1						39:13
10	RAMOS MOLINA Franco Benjamín	S	2/5	40						2/3	0/2		1		6								58:52
11	MURILLO CEDENO Ronald Alfonso	S	5/10	50	1/1		2/6			2/3					2						1		55:09
12	BUNAY CANTOS Victor Josué																						30:26
13	CRUZ TRIVINO Stephano Amado	S	5/6	83		3/3		1/2		1/1			1	1	2		1				1		32:20
14	NAVARRO ANDRADE Axel Alexandre														2								4:17
16	CAMPANA LOPEZ Dominick Nahim	S											1										29:34
Team / bench																							
UKUPNO			31/51	61	3/5	4/4	2/10	6/7	4/5	12/20	0/0		3	6	3	27	0	3	4	1	6	0	0

#	Surname and name	Saves / shots								
		Tot.	%	9m	6m	Wing	7m	FB	Brk.	LD
1	CARDENAS CHAVEZ Mauro Miguel	1/3	33	1/1	0/2					
12	BUNAY CANTOS Victor Josué	8/24	33	1/2	1/2	1/4	1/2	0/5	4/9	
16	CAMPANA LOPEZ Dominick Nahim	7/21	33	3/6		1/7		0/1	3/7	
TOTAL		16/48	33	5/9	1/4	2/11	1/2	0/6	7/16	0/0

Coach: Josue Elias Guiracocha Arriciaga

Number of attacks: 75, Efficiency: 41%, Average Duration: 28,3 seconds

### Attack by type of defense

	Shots	9m	6m	Wing	TF	E7	E2
On def. 5-1	16/29	3/4	2/2	2/7	19	3	1
On def. 4-2	4/8	0/1	2/2	0/3	7	0	2
On def. 3-2-1	1/2	0/0	0/0	0/0	1	2	0
Fastbreak	4/5				0	1	0

### Defense by type

	Total	9m	6m	Wing	Stl.	C7	2m
Def. 6-0	1/1	0/0	1/1	0/0	0	0	0
Def. 5-1	15/27	3/9	1/1	7/9	0	1	4
Def. 4-2	6/13	1/3	0/2	2/2	0	2	2
Def. 3-2-1	2/7	0/2	1/1	0/2	0	0	0
Def. 3-3	1/1	0/0	0/0	0/0	0	0	0
Fastbreak	6/6				0	0	0

### Attack with goalkeeper out

	Attack				Reaction		
	Att.	Eff.	Shots	TF	FB	LD	Tot.
GK in	75	40%	30/50	27	5/5	0/0	5/5

GK out attack is counted if one part or whole attack was GK out

### Attack with player superiority/minority

	Attack				Reaction		
	Att.	Eff.	Shots	TF	FB	LD	Tot.
Superiority +2	1	100%	1/1	0	0/0	0/0	0/0
Superiority +1	14	43%	6/10	5	1/1	0/0	1/1
Normal	40	38%	15/26	14	4/4	0/0	4/4
Minority -1	11	45%	5/8	4	1/1	0/0	1/1
Minority -2	2	50%	1/2	1	0/0	0/0	0/0

Player superiority counted at the end of attack (in case it changes during attack)

### Defense with opponent goalkeeper out

	Attack				Reaction		
	Att.	Eff.	Shots	TF	FB	LD	Tot.
GK out (7 on 6)	1	100%	1/1	0	0/0	0/0	0/0
GK in	70	43%	30/55	13	4/5	0/0	4/5

### Defense with player superiority/minority

	Attack				Reaction		
	Att.	Eff.	Shots	TF	FB	LD	Tot.
Minority -2	2	50%	1/2	0	0/0	0/0	0/0
Minority -1	9	44%	4/9	2	0/0	0/0	0/0
Normal	41	46%	19/32	7	3/4	0/0	3/4
Superiority +1	15	33%	5/8	3	1/1	0/0	1/1
Superiority +2	2	50%	1/1	1	0/0	0/0	0/0

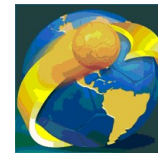
# Jersey number  
Brk. Breakthrough sh.  
C7. Committed 7m  
Tot. Total shooting  
LD Long distance sh.  
E2 Earned 2m pun.  
6m 6m (line) shooting  
As. Assists  
YC. Yellow cards  
9m 9m shooting  
E7 Earned 7m pen.  
RC Red cards  
Wng. Wing shooting  
TF Technical Faults  
BC Blue cards  
FB Fastbreak sh.  
St. Steals  
Blk. Blocks  
7m 7m penalty sh.  
2m 2m punishments  
S Starting Line-up



# IHF South and Central American Emerging Nations Ch

## Colombia (Palmira)

### Quarterfinal



Match Team Statistics

**Ecuador 31 - 32 Peru**

26.10.2018. 14:00

Match No. 18

(15 - 15) (16 - 17)

Attendance: 350

Sports Center Pavillon Blanco

Referees: Ines Paolantoni (ARG) / Mariana Garcia (ARG)

### Shot distribution by player

3 I. Pantaleón Oviedo

1/1		1/1
		1/2
0/4		1/1

1 miss.

4 L. Cornejo Caicedo


5 R. Quintero Pincay


6 J. Bajana Zambrano


7 G. Litardo Sosa

	0/1	1/1
1/2	0/1	2/2
2/2		1/1

8 J. Dominguez Galarza

	1/1	0/1
		1/1
		1/1

9 E. Quinonez Ayovi

1/2		2/2
2/2		

10 F. Ramos Molina

		1/1
0/2		0/1
	1/1	

11 R. Murillo Cedeno

3/3		1/1
0/1	0/1	
		0/2

1 miss. 1/1 lob

13 S. Cruz Trivino

1/1		1/1
1/2	1/1	1/1

14 A. Navarro Andrade


TOTAL

4/4	1/2	4/5
3/8	0/2	7/9
5/10	2/2	4/6

2 miss. 1/1 lob

### Saves distribution goalkeepers

1 M. Cardenas Chavez

	1/1	
0/1		
0/1		

12 V. Bunay Cantos

1/2	0/2	3/8
1/2	1/2	0/1
2/2		0/3

16 D. Campana Lopez

0/3	2/4	2/3
0/1	2/2	1/3
0/1	0/2	0/1

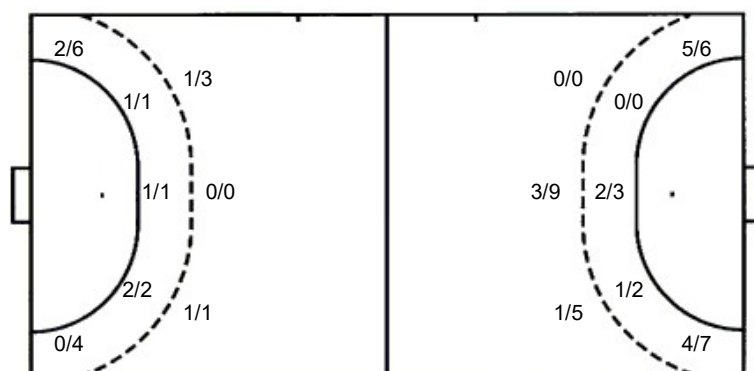
TOTAL

1/5	3/7	5/11
1/4	3/4	1/4
2/4	0/2	0/4

### Shots by position

ATTACK

DEFENSE



### Shooting statistics

Position	Goals	Sav.	Miss.	Post	Blk.	Total	%
Back (9m)	3	2	0	0	0	5	60
Line (6m)	4	0	0	0	0	4	100
Wing	2	7	1	0	0	10	20
7m penalties	6	1	0	0	0	7	86
Fastbreak	4	1	0	0	0	5	80
Breakthrough	12	7	1	0	0	20	60
<b>Total</b>	<b>31</b>	<b>18</b>	<b>2</b>	<b>0</b>	<b>0</b>	<b>51</b>	<b>61</b>

7m penalties 6/7  
Fastbreak 4/5  
Breakthrough 12/20  
Long dist. 0/0

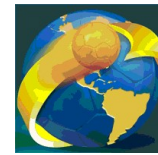
7m penalties 1/2  
Fastbreak 6/6  
Breakthrough 9/17  
Long dist. 0/0



# IHF South and Central American Emerging Nations Ch

## Colombia (Palmira)

### Quarterfinal



Match Team Statistics

Match No. 18

## Ecuador 31 - 32 Peru

(15 - 15) (16 - 17)

26.10.2018. 14:00

Attendance: 350

Sports Center Pavillon Blanco

Referees: Ines Paolantoni (ARG) / Mariana Garcia (ARG)

### Peru

Igraai		Goals / shots									Attack				Def.			Penalties			TP			
#	Surname and name	S	Tot.	%	9m	6m	Wing	7m	FB	Brk.	LD	As.	E7	E2	TF	St.	C7	Blk	YC	2m		RC	BC	
4	VELEZ LAZO Carlos Mauricio	S	0/1	0				0/1									1			1	1			32:03
8	GUTELIUS DIAZ Gianpierre Edson		0/1	0	0/1															1	2			30:33
9	TRELLES MALDONALDO Carlos Mauricio	S	3/7	43	1/2					2/5			3	1	1		2				1			55:55
10	ACUNA SEMINARIO Homero Manuel	S													1	2	2				1			32:21
15	CAMBORDA LEON Andre Jesus		5/6	83	0/1		2/2		3/3				1	1	1	1								31:24
16	LOPEZ FONSECA Percy Augusto		0/2	0		0/1									1						1			8:45
18	LOPEZ NORIEGA Diego Roberto	S	6/14	43	3/8	1/1				2/5			1	1	2	1	1							33:42
19	ZERILLO VILLANUEVA Carlos Gianfranco	S	5/6	83			3/4		1/1	1/1					4	1								37:32
22	CORPUS RODRIGUEZ Johan Rusbel	S											1											56:30
28	VICUNA HURTADO Fernando												1			1								9:21
29	TRELLES MALDONALDO Giancarlo		5/5	100		2/2		1/1		2/2			1	1	1	4	2	1			1			33:51
32	CHIARELLA CHIARELLA Giacarlo Norberto																							2:13
33	BUITRON MARCET Fernando	S	8/15	53	0/2	0/1	4/7		2/2	2/3					1	1								55:50
69	ALVAREZ SALAS Ricardo Alejandro																							
Team / bench																								
UKUPNO			32/57	56	4/14	3/5	9/13	1/2	6/6	9/17	0/0		8	2	4	15	8	7	0	3	6	0	0	

Goalkeepers		Saves / shots								
#	Surname and name	Tot.	%	9m	6m	Wing	7m	FB	Brk.	LD
19	ZERILLO VILLANUEVA Carlos Gianfranco	0/3	0		0/1		0/1		0/1	
22	CORPUS RODRIGUEZ Johan Rusbel	18/44	41	2/5	0/3	7/9	1/4	1/5	7/18	
32	CHIARELLA CHIARELLA Giacarlo Norberto	0/2	0				0/2			
TOTAL		18/49	37	2/5	0/4	7/9	1/7	1/5	7/19	0/0

Coach: Ivan Fernando Bendezu Lopez

Number of attacks: 75, Efficiency: 43%, Average Duration: 19,7 seconds

### Attack by type of defense

	Shots	9m	6m	Wing	TF	E7	E2
On def. 6-0	1/1	0/0	1/1	0/0	0	0	0
On def. 5-1	15/27	3/9	1/1	7/9	8	1	2
On def. 4-2	6/13	1/3	0/2	2/2	5	1	2
On def. 3-2-1	2/7	0/2	1/1	0/2	2	0	0
On def. 3-3	1/1	0/0	0/0	0/0	0	0	0
Fastbreak	6/6				0	0	0

### Defense by type

	Total	9m	6m	Wing	Stl.	C7	2m
Def. 5-1	16/29	3/4	2/2	2/7	5	3	4
Def. 4-2	4/8	0/1	2/2	0/3	0	1	2
Def. 3-2-1	1/2	0/0	0/0	0/0	2	2	0
Def. 3-3	0/0	0/0	0/0	0/0	1	0	0
Fastbreak	4/5				0	1	0

### Attack with goalkeeper out

	Attack				Reaction		
	Att.	Eff.	Shots	TF	FB	LD	Tot.
GK out (7 on 6)	1	100%	1/1	0	0/0	0/0	0/0
GK out pl. minority	4	25%	1/1	2	0/0	0/0	0/0
GK in	70	43%	30/55	13	4/5	0/0	4/5

GK out attack is counted if one part or whole attack was GK out

### Attack with player superiority/minority

	Attack				Reaction		
	Att.	Eff.	Shots	TF	FB	LD	Tot.
Superiority +2	2	50%	1/2	0	0/0	0/0	0/0
Superiority +1	9	44%	4/9	2	0/0	0/0	0/0
Normal	41	46%	19/32	7	3/4	0/0	3/4
Minority -1	15	33%	5/8	3	1/1	0/0	1/1
Minority -2	2	50%	1/1	1	0/0	0/0	0/0

Player superiority counted at the end of attack (in case it changes during attack)

### Defense with opponent goalkeeper out

	Attack				Reaction		
	Att.	Eff.	Shots	TF	FB	LD	Tot.
GK in	75	40%	30/50	27	5/5	0/0	5/5

### Defense with player superiority/minority

	Attack				Reaction		
	Att.	Eff.	Shots	TF	FB	LD	Tot.
Minority -2	1	100%	1/1	0	0/0	0/0	0/0
Minority -1	14	43%	6/10	5	1/1	0/0	1/1
Normal	40	38%	15/26	14	4/4	0/0	4/4
Superiority +1	11	45%	5/8	4	1/1	0/0	1/1
Superiority +2	2	50%	1/2	1	0/0	0/0	0/0

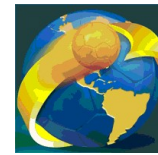
# Jersey number  
Brk. Breakthrough sh.  
C7. Committed 7m  
Tot. Total shooting  
LD Long distance sh.  
E2 Earned 2m pun.  
6m 6m (line) shooting  
As. Assists  
YC. Yellow cards  
9m 9m shooting  
E7 Earned 7m pen.  
RC Red cards  
Wng. Wing shooting  
TF Technical Faults  
BC Blue cards  
FB Fastbreak sh.  
St. Steals  
Blk. Blocks  
7m 7m penalty sh.  
2m 2m punishments  
S Starting Line-up



# IHF South and Central American Emerging Nations Ch

## Colombia (Palmira)

### Quarterfinal



Match Team Statistics  
Match No. 18

**Ecuador 31 - 32 Peru**  
(15 - 15) (16 - 17)

26.10.2018. 14:00  
Attendance: 350  
Sports Center Pavillon Blanco

Referees: Ines Paolantoni (ARG) / Mariana Garcia (ARG)

### Shot distribution by player

4 C. Velez Lazo

0/1		

8 G. Gutelius Diaz


1 miss.

9 C. Trelles  
Maldonado

1/1		1/3
	0/1	
	1/1	

1 miss.

10 H. Acuna  
Seminario


15 A. Camborda Leon

	1/2	1/1
	1/1	1/1
		1/1

16 P. Lopez Fonseca

0/1		
0/1		

18 D. Lopez Noriega

2/3	1/2	1/1
	0/2	1/1
		1/1

3 post 1 miss.

19 C. Zerillo  
Villanueva

		2/3
1/1		
	1/1	1/1

28 F. Vicuna Hurtado


29 G. Trelles  
Maldonado

	1/1	
2/2		
1/1		1/1

33 F. Buitron Marcet

1/1	1/2	1/3
		1/2
1/1		

3 post 3/3 lob

69 R. Alvarez Salas


TOTAL

4/5	4/7	6/11
3/4	1/4	3/4
2/4	2/2	4/4

6 post 3 miss. 3/3 lob

### Saves distribution goalkeepers

19 C. Zerillo  
Villanueva

0/1		
		0/2

22 J. Corpus  
Rodriguez

0/4	1/2	1/5
5/7	2/2	2/9
5/9	0/1	2/4

32 G. Chiarella  
Chiarella

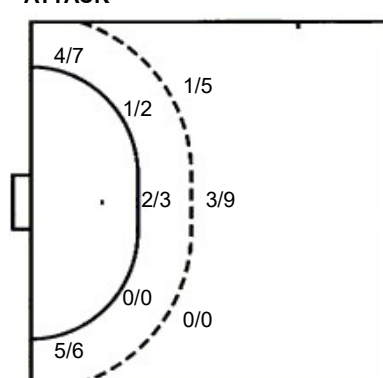
0/1	0/1	

TOTAL

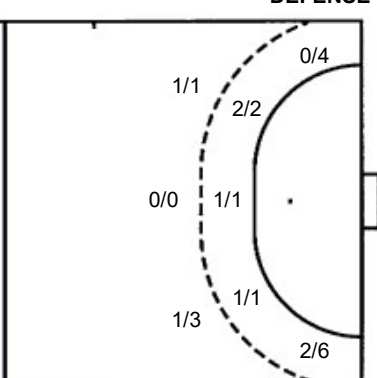
0/4	1/2	1/5
5/8	2/2	2/9
5/10	0/2	2/6

### Shots by position

ATTACK



DEFENSE



7m penalties 1/2  
Fastbreak 6/6  
Breakthrough 9/17  
Long dist. 0/0

7m penalties 6/7  
Fastbreak 4/5  
Breakthrough 12/20  
Long dist. 0/0

### Shooting statistics

Position	Goals	Sav.	Miss.	Post	Blk.	Total	%
Back (9m)	4	5	3	2	0	14	29
Line (6m)	3	1	0	1	0	5	60
Wing	9	2	0	2	0	13	69
7m penalties	1	1	0	0	0	2	50
Fastbreak	6	0	0	0	0	6	100
Breakthrough	9	7	0	1	0	17	53
<b>Total</b>	<b>32</b>	<b>16</b>	<b>3</b>	<b>6</b>	<b>0</b>	<b>57</b>	<b>56</b>

# Jersey number Tot. Total shooting 6m 6m (line) shooting 9m 9m shooting Wng. Wing shooting FB Fastbreak sh. 7m 7m penalty sh.  
Brk. Breakthrough sh. LD Long distance sh. As. Assists E7 Earned 7m pen. TF Technical Faults St. Steals 2m 2m punishments  
C7. Committed 7m E2 Earned 2m pun. YC. Yellow cards RC Red cards BC Blue cards Blk. Blocks S Starting Line-up