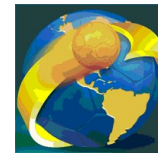




# IHF South and Central American Emerging Nations Ch

## Colombia (Palmira)

Placement round 9-11. place



Match Team Statistics

**El Salvador 33 - 29 Bolivia**

26.10.2018. 10:00

Match No. 16

(13 - 13) (20 - 16)

Attendance: 500

Sports Center Pavillon Blanco

Referees: Edgar L. Amarilla (PAR) / Alexis M. Rodriguez (PAR)

### El Salvador

#	Surname and name	S	Goals / shots								Attack				Def.			Penalties			TP			
			Tot.	%	9m	6m	Wing	7m	FB	Brk.	LD	As.	E7	E2	TF	St.	C7	Bk	YC	2m		RC	BC	
1	LOPEZ AVELAR Fernando Jose	S												1			1							5:16
2	CANAS ABREGO Joel Alejandro																							
3	MONTES RODRIGUEZ Jose Omar		6/9	67	0/1	0/1	2/3	1/1	3/3					1			1			1				34:02
5	RAMOS SOSA Juan Armando	S	2/4	50		1/2	1/2										1			1				35:40
7	CHOTO MOLINA Oscar Alexander		2/3	67	1/1	1/2								2			1			1				17:45
10	ESCALANTE VASQUEZ Jorge Luis	S	1/3	33			1/3																	8:45
14	SOSA ABARCA Heraldo Stephan	S	4/8	50	1/3	0/1	2/3		1/1					4	3	3	6	2						47:24
16	HERNANDEZ GONZALEZ Vladimir Alejandro		1/1	100										2										51:22
23	LOPEZ ALVAREZ Carlos Alejandro																							
24	SERRANO HERRERA Jonathan Josue		1/3	33		0/2			1/1					2			4	1				1		32:32
27	ARAUJO AQUINO Luis Enrique		1/3	33			1/3										1							12:26
46	APARICIO ROMERO Jaime Fernando	S	4/8	50		4/6				0/1	0/1			4		4	1				1			60:00
77	FLORES MORENO Hector Santiago	S												1			2				2			54:48
96	ESPINOZA RAMOS Ricardo Adolfo	S	11/13	85	3/4	1/2		2/2	4/4		1/1			2		1	3	1			1			60:00
	Team / bench																							
	UKUPNO		33/55	60	5/9	7/16	7/14	3/3	9/9	0/1	2/3			19	3	3	20	7	4	0	0	8	0	0

Goalkeepers		Saves / shots								
#	Surname and name	Tot.	%	9m	6m	Wing	7m	FB	Brk.	LD
1	LOPEZ AVELAR Fernando Jose	3/5	60		1/1	1/3		1/1		
16	HERNANDEZ GONZALEZ Vladimir Alejandro	16/43	37	0/1	9/21	5/12	2/4	0/4	0/1	
	TOTAL	19/48	40	0/1	10/22	6/15	2/4	1/5	0/1	0/0

Coach: **Eduardo Adonay Guillen Candray**

Number of attacks: 74, Efficiency: 45%, Average Duration: 26,1 seconds

### Attack by type of defense

	Shots	9m	6m	Wing	TF	E7	E2
On def. 6-0	5/12	2/5	2/4	1/3	8	0	0
On def. 5-1	10/21	2/3	3/7	5/10	11	3	3
On def. 4-2	2/5	1/1	1/4	0/0	0	0	0
On def. 3-3	1/1	0/0	0/0	1/1	1	0	0
On def. press.	1/1	0/0	1/1	0/0	0	0	0
Fastbreak	9/9				0	0	0

### Defense by type

	Total	9m	6m	Wing	Stl.	C7	2m
Def. 6-0	10/21	0/0	5/11	4/9	3	2	3
Def. 5-1	12/20	1/1	6/13	5/6	4	2	4
Def. 4-2	1/2	0/0	1/1	0/0	0	0	1
Fastbreak	4/5				0	0	0

### Attack with goalkeeper out

	Attack				Reaction		
	Att.	Eff.	Shots	TF	FB	LD	Tot.
GK in	74	42%	31/52	19	4/5	0/0	4/5

GK out attack is counted if one part or whole attack was GK out

### Defense with opponent goalkeeper out

	Attack				Reaction		
	Att.	Eff.	Shots	TF	FB	LD	Tot.
GK out (7 on 6)	4	0%	0/0	0	0/0	0/0	0/0
GK out pl. super.	0	0%	0/0	0	0/0	0/0	0/0
GK in	69	42%	29/52	24	9/9	2/3	11/12

### Attack with player superiority/minority

	Attack				Reaction		
	Att.	Eff.	Shots	TF	FB	LD	Tot.
Superiority +1	14	71%	10/13	1	1/1	0/0	1/1
Normal	30	43%	13/23	8	3/3	0/0	3/3
Minority -1	18	33%	6/12	4	0/0	0/0	0/0
Minority -2	4	25%	1/2	2	0/0	0/0	0/0

Player superiority counted at the end of attack (in case it changes during attack)

### Defense with player superiority/minority

	Attack				Reaction		
	Att.	Eff.	Shots	TF	FB	LD	Tot.
Minority -2	5	40%	2/4	1	0/0	0/0	0/0
Minority -1	17	29%	5/11	8	2/2	1/1	3/3
Normal	29	41%	12/18	10	4/4	1/2	5/6
Superiority +1	13	38%	5/10	3	2/2	0/0	2/2

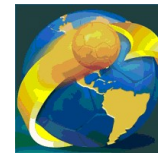
# Jersey number  
**Brk.** Breakthrough sh.  
**C7.** Committed 7m  
**LD** Long distance sh.  
**E2** Earned 2m pun.  
**6m** 6m (line) shooting  
**As.** Assists  
**YC.** Yellow cards  
**9m** 9m shooting  
**E7** Earned 7m pen.  
**RC** Red cards  
**Wng.** Wing shooting  
**TF** Technical Faults  
**BC** Blue cards  
**FB** Fastbreak sh.  
**St.** Steals  
**Bk.** Blocks  
**7m** 7m penalty sh.  
**2m** 2m punishments  
**S** Starting Line-up



# IHF South and Central American Emerging Nations Ch

## Colombia (Palmira)

Placement round 9-11. place



### Match Team Statistics

Match No. 16

### El Salvador 33 - 29 Bolivia

(13 - 13) (20 - 16)

26.10.2018. 10:00

Attendance: 500

Sports Center Pavillon Blanco

Referees: Edgar L. Amarilla (PAR) / Alexis M. Rodriguez (PAR)

### Shot distribution by player

#### 2 J. Canas Abrego


#### 3 J. Montes Rodriguez

	0/1	1/1
0/1	1/1	2/3

2/2 lob

#### 5 J. Ramos Sosa

0/1		
1/1		
		1/1

1 miss.

#### 7 O. Choto Molina

1/2		
1/1		

#### 10 J. Escalante Vasquez

		1/1
0/1		

1 miss.

#### 14 H. Sosa Abarca

0/2		2/3

1 block 2/2 lob

#### 23 C. Lopez Alvarez


#### 24 J. Serrano Herrera

		0/2
		1/1

#### 27 L. Araujo Aquino

	0/1	
	0/1	1/1

#### 46 J. Aparicio Romero

	1/1	
		2/3
1/1		

2 post

#### 77 H. Flores Moreno


#### 96 R. Espinoza Ramos

1/1		1/1
	1/1	2/2
2/2		1/1

1 miss. 1 block 3/3 lob

#### TOTAL

1/2	1/1	2/2
2/5	1/3	7/11
4/6	1/2	6/7

2 post 3 miss. 2 block 7/7 lob

### Saves distribution goalkeepers

#### 1 F. Lopez Avelar

		1/1
0/2	2/2	

#### 16 V. Hernandez Gonzalez

0/1		
4/11		6/15
2/6	3/4	1/6

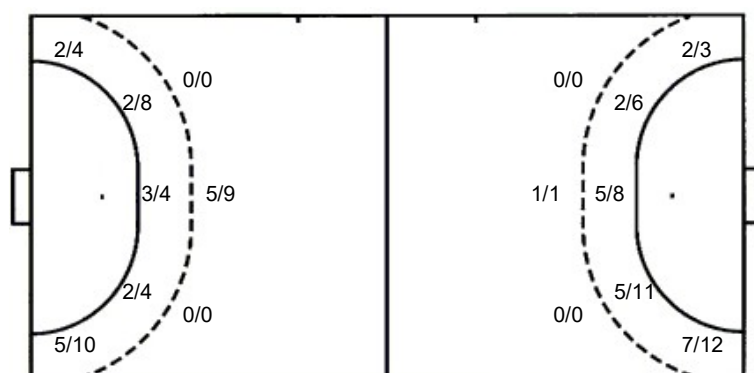
#### TOTAL

0/1		
4/11		7/16
2/8	5/6	1/6

### Shots by position

#### ATTACK

#### DEFENSE



7m penalties 3/3  
Fastbreak 9/9  
Breakthrough 0/1  
Long dist. 2/3

7m penalties 2/4  
Fastbreak 4/5  
Breakthrough 1/2  
Long dist. 0/0

### Shooting statistics

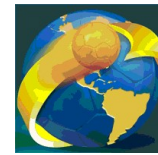
Position	Goals	Sav.	Miss.	Post	Blk.	Total	%
Back (9m)	5	2	0	0	2	9	56
Line (6m)	7	6	2	1	0	16	44
Wing	7	6	1	0	0	14	50
7m penalties	3	0	0	0	0	3	100
Fastbreak	9	0	0	0	0	9	100
Breakthrough	0	0	0	1	0	1	0
<b>Total</b>	<b>31</b>	<b>14</b>	<b>3</b>	<b>2</b>	<b>2</b>	<b>52</b>	<b>60</b>



# IHF South and Central American Emerging Nations Ch

Colombia (Palmira)

Placement round 9-11. place



Match Team Statistics

Match No. 16

**El Salvador 33 - 29 Bolivia**

(13 - 13) (20 - 16)

26.10.2018. 10:00

Attendance: 500

Sports Center Pavillon Blanco

Referees: Edgar L. Amarilla (PAR) / Alexis M. Rodriguez (PAR)

## Bolivia

#	Surname and name	S	Goals / shots								Attack			Def.			Penalties			TP			
			Tot.	%	9m	6m	Wing	7m	FB	Brk.	LD	As.	E7	TF	St.	C7	Blk	YC	2m		RC	BC	
3	JULIAN MERCADO Joel	S	0/1	0		0/1							1									58:55	
4	SERRUDO Diego Bryan	S	6/11	55		0/1	5/9		1/1					4	1				1			27:14	
7	ZURITA HUAYTA Carlos Gilmar		0/2	0		0/2							1		2							10:53	
9	ROSALES GILDRES Herbert Fernando																					1:05	
10	CHILACA Martin Miguel	S	2/2	100		1/1				1/1			7		8	1	1		1	1		60:00	
11	ROJAS MORALES Jose Maria Huascar		1/2	50		0/1			1/1				1	2	2	1						23:03	
14	CANAZA QUISPE Pablo	S	2/5	40		2/4	0/1						7		1		2			2		60:00	
15	ROJAS MORALES Tomas Sebastian	S	2/6	33		1/3		1/2		0/1			2		1					1		36:55	
20	FERNANDEZ Eddy	S	3/5	60		3/5							1	2	3							46:26	
23	LIMA MONTERO Alejandro Chein																					1:28	
24	LISIDRO QUISPE Arturo Efrain	S	5/8	63		1/2	2/3	1/2	1/1				1	1	1							44:07	
26	SIERRAALTA Alex Jhomar Mamani																						
77	CRESPO GUTIERREZ Jorge Orlando		8/10	80	1/1	4/5	2/2		1/2				1	2	3	3	3					37:47	
99	CHOQUE PALAPE Arnold Jhordan														1							12:07	
Team / bench																							
UKUPNO			29/52	56	1/1	12/25	9/15	2/4	4/5	1/2	0/0		22	4	8	24	6	3	0	1	5	0	0

#	Surname and name	Saves / shots								
		Tot.	%	9m	6m	Wing	7m	FB	Brk.	LD
3	JULIAN MERCADO Joel	14/45	31	2/7	6/13	6/13	0/3	0/9		
9	ROSALES GILDRES Herbert Fernando									
TOTAL		14/45	31	2/7	6/13	6/13	0/3	1/9	0/0	0/0

Coach:

Number of attacks: 73, Efficiency: 40%, Average Duration: 22,8 seconds

### Attack by type of defense

	Shots	9m	6m	Wing	TF	E7	E2
On def. 6-0	10/21	0/0	5/11	4/9	9	2	3
On def. 5-1	12/20	1/1	6/13	5/6	12	2	4
On def. 4-2	1/2	0/0	1/1	0/0	3	0	1
Fastbreak	4/5				0	0	0

### Defense by type

	Total	9m	6m	Wing	Stl.	C7	2m
Def. 6-0	5/12	2/5	2/4	1/3	1	0	2
Def. 5-1	10/21	2/3	3/7	5/10	4	3	3
Def. 4-2	2/5	1/1	1/4	0/0	1	0	0
Def. 3-3	1/1	0/0	0/0	1/1	0	0	0
Def. press.	1/1	0/0	1/1	0/0	0	0	0
Fastbreak	9/9				0	0	0

### Attack with goalkeeper out

	Attack				Reaction		
	Att.	Eff.	Shots	TF	FB	LD	Tot.
GK out (7 on 6)	4	0%	0/0	0	0/0	0/0	0/0
GK in	69	42%	29/52	24	9/9	2/3	11/12

GK out attack is counted if one part or whole attack was GK out

### Defense with opponent goalkeeper out

	Attack				Reaction		
	Att.	Eff.	Shots	TF	FB	LD	Tot.
GK in	74	42%	31/52	19	4/5	0/0	4/5

### Attack with player superiority/minority

	Attack				Reaction		
	Att.	Eff.	Shots	TF	FB	LD	Tot.
Superiority +2	5	40%	2/4	1	0/0	0/0	0/0
Superiority +1	17	29%	5/11	8	2/2	1/1	3/3
Normal	29	41%	12/18	10	4/4	1/2	5/6
Minority -1	13	38%	5/10	3	2/2	0/0	2/2

Player superiority counted at the end of attack (in case it changes during attack)

### Defense with player superiority/minority

	Attack				Reaction		
	Att.	Eff.	Shots	TF	FB	LD	Tot.
Minority -1	14	71%	10/13	1	1/1	0/0	1/1
Normal	30	43%	13/23	8	3/3	0/0	3/3
Superiority +1	18	33%	6/12	4	0/0	0/0	0/0
Superiority +2	4	25%	1/2	2	0/0	0/0	0/0

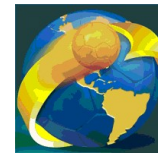
# Jersey number Tot. Total shooting 6m 6m (line) shooting 9m 9m shooting Wng. Wing shooting FB Fastbreak sh. 7m 7m penalty sh.  
 Brk. Breakthrough sh. LD Long distance sh. As. Assists E7 Earned 7m pen. TF Technical Faults St. Steals 2m 2m punishments  
 C7. Committed 7m E2 Earned 2m pun. YC. Yellow cards RC Red cards BC Blue cards Blk. Blocks S Starting Line-up



# IHF South and Central American Emerging Nations Ch

Colombia (Palmira)

Placement round 9-11. place



Match Team Statistics

Match No. 16

**El Salvador 33 - 29 Bolivia**

(13 - 13) (20 - 16)

26.10.2018. 10:00

Attendance: 500

Sports Center Pavillon Blanco

Referees: Edgar L. Amarilla (PAR) / Alexis M. Rodriguez (PAR)

## Shot distribution by player

**4 D. Serrudo**

1/2		3/3
1/3	0/1	1/2

**7 C. Zurita Huayta**

		0/1

1 miss.

**10 M. Chilaca**

1/1		
		1/1

**11 J. Rojas Morales**

		1/1

1 post

**14 P. Canaza Quispe**

1/1		
		0/3
1/1		

**15 T. Rojas Morales**

2/4		0/1

1 miss.

**20 E. Fernandez**

		3/3
	0/1	

1 miss.

**23 A. Lima Montero**


**24 A. Lisidro Quispe**

1/2		1/2
2/2	1/2	

**26 A. Sierraalta**


**77 J. Crespo Gutierrez**

2/2		1/2
2/2	0/1	3/3

**99 A. Choque Palape**


**TOTAL**

1/1		
7/11		9/16
6/8	1/5	5/6

1 post 3 miss.

## Saves distribution goalkeepers

**3 J. Julián Mercado**

1/2	0/1	0/2
3/5	2/3	4/11
2/6	1/3	1/7

**9 H. Rosales Gildres**

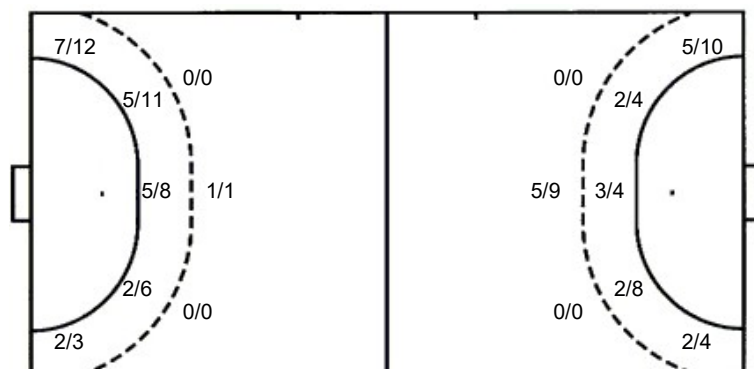

**TOTAL**

1/2	0/1	0/2
3/5	2/3	4/11
2/6	1/3	1/7

## Shots by position

**ATTACK**

**DEFENSE**



7m penalties 2/4  
Fastbreak 4/5  
Breakthrough 1/2  
Long dist. 0/0

7m penalties 3/3  
Fastbreak 9/9  
Breakthrough 0/1  
Long dist. 2/3

## Shooting statistics

Position	Goals	Sav.	Miss.	Post	Blk.	Total	%
Back (9m)	1	0	0	0	0	1	100
Line (6m)	12	10	2	1	0	25	48
Wing	9	6	0	0	0	15	60
7m penalties	2	2	0	0	0	4	50
Fastbreak	4	1	0	0	0	5	80
Breakthrough	1	0	1	0	0	2	50
<b>Total</b>	<b>29</b>	<b>19</b>	<b>3</b>	<b>1</b>	<b>0</b>	<b>52</b>	<b>56</b>