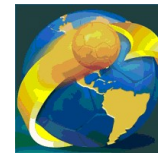




# IHF South and Central American Emerging Nations Ch

Colombia (Palmira)

Group C



Match Team Statistics

**Guatemala 26 - 27 Peru**

24.10.2018. 18:00

Match No. 15

(11 - 11) (15 - 16)

Attendance: 100

Sports Center Pavillon Blanco

Referees: Ines Paolantoni (ARG) / Mariana Garcia (ARG)

## Guatemala

| #            | Surname and name                     | S | Goals / shots |     |     |       |      |     |     |      | Attack |     |     |    | Def. |     |    | Penalties |    |    | TP |    |       |   |
|--------------|--------------------------------------|---|---------------|-----|-----|-------|------|-----|-----|------|--------|-----|-----|----|------|-----|----|-----------|----|----|----|----|-------|---|
|              |                                      |   | Tot.          | %   | 9m  | 6m    | Wing | 7m  | FB  | Brk. | LD     | As. | E7  | E2 | TF   | St. | C7 | Blk       | YC | 2m |    | RC | BC    |   |
| 1            | AMADO DE LEÓN Ricardo Alfredo        |   |               |     |     |       |      |     |     |      |        |     |     |    |      |     |    |           |    |    |    |    | 6:13  |   |
| 3            | RIVERA ALVARADO Brandon José Roberto | S | 1/3           | 33  |     |       | 1/3  |     |     |      |        |     |     | 1  |      |     | 1  | 1         |    |    |    | 1  | 45:00 |   |
| 5            | HERRERA JUAREZ Ubaldo Antonio        | S | 5/9           | 56  | 0/2 | 4/5   |      |     | 0/1 |      |        |     | 1/1 | 1  | 1    | 1   | 2  | 2         |    |    | 1  | 2  | 48:54 |   |
| 6            | DE LEÓN CHÁVEZ Luis Miguel           |   | 4/4           | 100 |     | 2/2   |      |     |     | 2/2  |        |     |     |    |      | 1   | 3  |           |    |    |    |    | 20:21 |   |
| 8            | HERNANDEZ RAMOS Carlos Ignacio       |   | 0/4           | 0   |     | 0/4   |      |     |     |      |        |     |     |    | 1    | 1   |    |           |    |    |    |    | 40:05 |   |
| 10           | MARTÍNEZ Edwin Josué                 | S | 8/9           | 89  |     | 6/7   |      |     | 2/2 |      |        |     |     | 2  |      | 2   | 8  |           |    |    |    |    | 43:41 |   |
| 12           | MARTINEZ CALVILLO Marvin Arnoldo     | S |               |     |     |       |      |     |     |      |        |     |     |    |      |     |    |           |    |    |    |    | 53:47 |   |
| 13           | ALDI ÁVILA Estiff                    | S | 7/9           | 78  | 1/1 | 4/4   | 2/4  |     |     |      |        |     |     | 1  | 2    | 4   |    |           |    |    | 1  |    | 54:54 |   |
| 17           | MONZON TECUN Marco Tulio             | S | 1/1           | 100 |     | 1/1   |      |     |     |      |        |     |     |    |      | 1   |    |           |    |    | 1  |    | 30:00 |   |
| 21           | ROJAS ROJAS Berny Alexander          | S | 0/1           | 0   | 0/1 |       |      |     |     |      |        |     |     |    |      | 2   | 1  |           |    |    |    |    | 39:19 |   |
| 29           | CONTRERAS Diego Sebastián            |   |               |     |     |       |      |     |     |      |        |     |     |    |      | 2   |    |           |    |    |    |    | 2:18  |   |
| 33           | SOTO HERNANDEZ Carlos Manuel         |   |               |     |     |       |      |     |     |      |        |     |     |    |      |     |    |           |    |    |    |    |       |   |
| 42           | CAMEY ROCA David Enrique             |   | 0/1           | 0   |     | 0/1   |      |     |     |      |        |     |     |    |      |     |    | 1         |    |    | 2  |    | 28:05 |   |
| 51           | GARCÍA CERMENO Brandon Rene          |   |               |     |     |       |      |     |     |      |        |     |     |    |      | 1   |    |           |    |    |    |    | 7:23  |   |
| Team / bench |                                      |   |               |     |     |       |      |     |     |      |        |     |     |    |      |     |    |           |    |    |    |    |       |   |
| UKUPNO       |                                      |   | 26/41         | 63  | 1/4 | 17/24 | 3/7  | 2/3 | 2/2 | 0/0  | 1/1    |     |     | 4  | 3    | 7   | 24 | 4         | 1  | 0  | 1  | 7  | 0     | 0 |

| Goalkeepers |                                  | Saves / shots |    |     |      |      |     |     |      |     |
|-------------|----------------------------------|---------------|----|-----|------|------|-----|-----|------|-----|
| #           | Surname and name                 | Tot.          | %  | 9m  | 6m   | Wing | 7m  | FB  | Brk. | LD  |
| 1           | AMADO DE LEÓN Ricardo Alfredo    | 0/5           | 0  | 0/1 | 0/2  | 0/2  |     |     |      |     |
| 12          | MARTINEZ CALVILLO Marvin Arnoldo | 12/34         | 35 | 2/5 | 7/20 | 2/5  | 1/1 | 0/3 |      |     |
| TOTAL       |                                  | 12/39         | 31 | 2/6 | 7/22 | 2/7  | 1/1 | 0/3 | 0/0  | 0/0 |

Coach: **Gelio David Arana Cancinos**

Number of attacks: 63, Efficiency: 41%, Average Duration: 29,0 seconds

### Attack by type of defense

|                | Shots | 9m  | 6m   | Wing | TF | E7 | E2 |
|----------------|-------|-----|------|------|----|----|----|
| On def. 6-0    | 3/4   | 1/1 | 2/2  | 0/1  | 3  | 1  | 1  |
| On def. 5-1    | 1/2   | 0/0 | 1/1  | 0/1  | 4  | 1  | 1  |
| On def. 4-2    | 6/14  | 0/1 | 6/12 | 0/1  | 10 | 0  | 0  |
| On def. 3-3    | 1/1   | 0/0 | 1/1  | 0/0  | 1  | 0  | 0  |
| On def. press. | 10/14 | 0/2 | 7/8  | 3/4  | 6  | 1  | 5  |
| Fastbreak      | 2/2   |     |      |      | 0  | 0  | 0  |

### Defense by type

|             | Total | 9m  | 6m   | Wing | Stl. | C7 | 2m |
|-------------|-------|-----|------|------|------|----|----|
| Def. 6-0    | 4/7   | 1/2 | 2/3  | 1/2  | 0    | 0  | 1  |
| Def. 5-1    | 15/28 | 3/5 | 8/14 | 4/9  | 1    | 1  | 5  |
| Def. 4-2    | 4/8   | 0/0 | 4/7  | 0/1  | 2    | 0  | 1  |
| Def. press. | 1/4   | 0/0 | 1/4  | 0/0  | 1    | 0  | 0  |
| Fastbreak   | 3/3   |     |      |      | 0    | 0  | 0  |

### Attack with goalkeeper out

|       | Attack |      |       |    | Reaction |     |      |
|-------|--------|------|-------|----|----------|-----|------|
|       | Att.   | Eff. | Shots | TF | FB       | LD  | Tot. |
| GK in | 63     | 41%  | 26/41 | 24 | 3/3      | 0/0 | 3/3  |

GK out attack is counted if one part or whole attack was GK out

### Defense with opponent goalkeeper out

|                   | Attack |      |       |    | Reaction |     |      |
|-------------------|--------|------|-------|----|----------|-----|------|
|                   | Att.   | Eff. | Shots | TF | FB       | LD  | Tot. |
| GK out (7 on 6)   | 7      | 29%  | 2/3   | 3  | 0/0      | 1/1 | 1/1  |
| GK out pl. super. | 2      | 50%  | 1/2   | 0  | 0/0      | 0/0 | 0/0  |
| GK in             | 54     | 44%  | 24/46 | 12 | 2/2      | 0/0 | 2/2  |

### Attack with player superiority/minority

|                | Attack |      |       |    | Reaction |     |      |
|----------------|--------|------|-------|----|----------|-----|------|
|                | Att.   | Eff. | Shots | TF | FB       | LD  | Tot. |
| Superiority +2 | 6      | 83%  | 5/5   | 1  | 0/0      | 0/0 | 0/0  |
| Superiority +1 | 7      | 29%  | 2/5   | 3  | 0/0      | 0/0 | 0/0  |
| Normal         | 19     | 47%  | 9/15  | 4  | 2/2      | 0/0 | 2/2  |
| Minority -1    | 6      | 17%  | 1/1   | 5  | 0/0      | 0/0 | 0/0  |
| Minority -2    | 4      | 50%  | 2/2   | 2  | 0/0      | 0/0 | 0/0  |

Player superiority counted at the end of attack (in case it changes during attack)

### Defense with player superiority/minority

|                | Attack |      |       |    | Reaction |     |      |
|----------------|--------|------|-------|----|----------|-----|------|
|                | Att.   | Eff. | Shots | TF | FB       | LD  | Tot. |
| Minority -2    | 5      | 60%  | 3/5   | 0  | 0/0      | 0/0 | 0/0  |
| Minority -1    | 8      | 50%  | 4/5   | 3  | 0/0      | 0/0 | 0/0  |
| Normal         | 18     | 61%  | 11/17 | 2  | 1/1      | 1/1 | 2/2  |
| Superiority +1 | 7      | 57%  | 4/6   | 2  | 0/0      | 0/0 | 0/0  |
| Superiority +2 | 5      | 20%  | 1/4   | 1  | 1/1      | 0/0 | 1/1  |

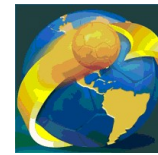
# Jersey number  
 Brk. Breakthrough sh.  
 C7. Committed 7m  
 LD Long distance sh.  
 E2 Eearned 2m pun.  
 6m 6m (line) shooting  
 As. Assists  
 YC. Yellow cards  
 9m 9m shooting  
 E7 Eearned 7m pen.  
 RC Red cards  
 Wng. Wing shooting  
 TF Technical Faults  
 BC Blue cards  
 FB Fastbreak sh.  
 St. Steals  
 Blk. Blocks  
 7m 7m penalty sh.  
 2m 2m punishments  
 S Starting Line-up



# IHF South and Central American Emerging Nations Ch

## Colombia (Palmira)

### Group C



Match Team Statistics  
Match No. 15

**Guatemala 26 - 27 Peru**  
(11 - 11) (15 - 16)

24.10.2018. 18:00  
Attendance: 100  
Sports Center Pavillon Blanco

Referees: Ines Paolantoni (ARG) / Mariana Garcia (ARG)

### Shot distribution by player

3 B. Rivera Alvarado

|  |     |     |
|--|-----|-----|
|  |     |     |
|  | 0/1 | 1/1 |
|  |     |     |

1 miss.

5 U. Herrera Juarez

|     |     |     |
|-----|-----|-----|
| 1/1 | 1/1 | 1/1 |
| 0/2 |     | 2/2 |
|     |     | 0/1 |

1 post

6 L. De León Chávez

|  |     |     |
|--|-----|-----|
|  |     |     |
|  |     | 2/2 |
|  | 1/1 | 1/1 |

8 C. Hernández Ramos

|  |  |     |
|--|--|-----|
|  |  |     |
|  |  | 0/3 |
|  |  |     |

1 miss.

10 E. Martínez

|     |     |     |
|-----|-----|-----|
|     |     | 1/1 |
| 1/2 | 1/1 |     |
| 1/1 | 1/1 | 3/3 |

13 E. Aldi Ávila

|     |     |     |
|-----|-----|-----|
|     | 1/1 |     |
| 1/2 |     | 2/2 |
| 2/2 |     | 1/1 |

1 miss.

17 M. Monzón Tecún

|  |  |     |
|--|--|-----|
|  |  |     |
|  |  |     |
|  |  | 1/1 |

21 B. Rojas Rojas

|  |  |  |
|--|--|--|
|  |  |  |
|  |  |  |
|  |  |  |

1 miss.

29 D. Contreras

|  |  |  |
|--|--|--|
|  |  |  |
|  |  |  |
|  |  |  |

33 C. Soto Hernandez

|  |  |  |
|--|--|--|
|  |  |  |
|  |  |  |
|  |  |  |

42 D. Camey Roca

|  |  |  |
|--|--|--|
|  |  |  |
|  |  |  |
|  |  |  |

1 block

51 B. García Cermeno

|  |  |  |
|--|--|--|
|  |  |  |
|  |  |  |
|  |  |  |

### TOTAL

|     |     |      |
|-----|-----|------|
| 1/1 | 2/2 | 2/2  |
| 2/6 | 1/2 | 7/10 |
| 3/3 | 2/2 | 6/7  |

1 post 4 miss. 1 block

### Saves distribution goalkeepers

1 R. Amado De León

|     |  |     |
|-----|--|-----|
|     |  |     |
| 0/1 |  | 0/2 |
| 0/1 |  | 0/1 |

12 M. Martinez Calvillo

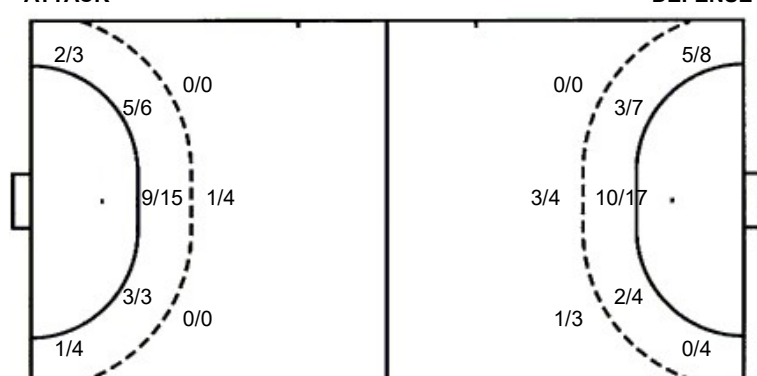
|     |     |     |
|-----|-----|-----|
| 0/1 | 1/1 | 0/2 |
| 5/9 | 0/1 | 3/8 |
| 2/5 | 1/1 | 0/6 |

### TOTAL

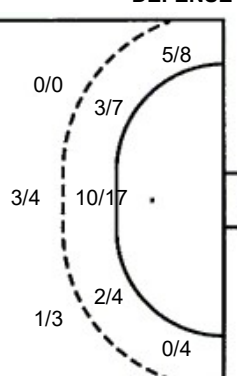
|      |     |      |
|------|-----|------|
| 0/1  | 1/1 | 0/2  |
| 5/10 | 0/1 | 3/10 |
| 2/6  | 1/1 | 0/7  |

### Shots by position

#### ATTACK



#### DEFENSE



7m penalties 2/3  
Fastbreak 2/2  
Breakthrough 0/0  
Long dist. 1/1

7m penalties 0/1  
Fastbreak 3/3  
Breakthrough 0/0  
Long dist. 0/0

### Shooting statistics

| Position     | Goals     | Sav.     | Miss.    | Post     | Blk.     | Total     | %         |
|--------------|-----------|----------|----------|----------|----------|-----------|-----------|
| Back (9m)    | 1         | 1        | 1        | 1        | 0        | 4         | 25        |
| Line (6m)    | 17        | 5        | 1        | 0        | 1        | 24        | 71        |
| Wing         | 3         | 2        | 2        | 0        | 0        | 7         | 43        |
| 7m penalties | 2         | 1        | 0        | 0        | 0        | 3         | 67        |
| Fastbreak    | 2         | 0        | 0        | 0        | 0        | 2         | 100       |
| Breakthrough | 0         | 0        | 0        | 0        | 0        | 0         | 0         |
| <b>Total</b> | <b>25</b> | <b>9</b> | <b>4</b> | <b>1</b> | <b>1</b> | <b>40</b> | <b>63</b> |

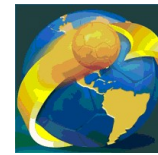
# Jersey number Tot. Total shooting 6m 6m (line) shooting 9m 9m shooting Wng. Wing shooting FB Fastbreak sh. 7m 7m penalty sh.  
Brk. Breakthrough sh. LD Long distance sh. As. Assists E7 Earned 7m pen. TF Technical Faults St. Steals 2m 2m punishments  
C7. Committed 7m E2 Earned 2m pun. YC. Yellow cards RC Red cards BC Blue cards Blk. Blocks S Starting Line-up



# IHF South and Central American Emerging Nations Ch

## Colombia (Palmira)

### Group C



Match Team Statistics  
Match No. 15

**Guatemala 26 - 27 Peru**  
(11 - 11) (15 - 16)

24.10.2018. 18:00  
Attendance: 100  
Sports Center Pavillon Blanco

Referees: Ines Paolantoni (ARG) / Mariana Garcia (ARG)

### Peru

| Igraai       |                                       | Goals / shots |       |    |     |       |      |     |     |      | Attack |     |    | Def. |    |     | Penalties |     |    | TP |    |    |  |       |
|--------------|---------------------------------------|---------------|-------|----|-----|-------|------|-----|-----|------|--------|-----|----|------|----|-----|-----------|-----|----|----|----|----|--|-------|
| #            | Surname and name                      | S             | Tot.  | %  | 9m  | 6m    | Wing | 7m  | FB  | Brk. | LD     | As. | E7 | E2   | TF | St. | C7        | Blk | YC | 2m | RC | BC |  |       |
| 4            | VELEZ LAZO Carlos Mauricio            | S             |       |    |     |       |      |     |     |      |        | 1   |    |      |    | 2   |           |     |    |    |    |    |  | 19:34 |
| 8            | GUTELIUS DIAZ Gianpierre Edson        |               | 6/7   | 86 | 1/1 | 5/6   |      |     |     |      |        |     |    |      | 2  | 2   |           |     |    |    | 1  |    |  | 43:14 |
| 9            | TRELLES MALDONALDO Carlos Mauricio    | S             | 5/8   | 63 | 1/1 | 3/6   |      |     | 1/1 |      |        | 5   | 1  | 2    | 3  | 1   |           |     |    | 1  |    |    |  | 56:27 |
| 10           | ACUNA SEMINARIO Homero Manuel         | S             |       |    |     |       |      |     |     |      |        |     |    | 2    |    |     |           |     |    |    | 1  |    |  | 36:17 |
| 15           | CAMBORDA LEON Andre Jesus             |               | 4/6   | 67 | 1/1 | 2/4   | 1/1  |     |     |      |        | 1   |    | 1    | 1  |     |           |     |    |    |    |    |  | 24:20 |
| 16           | LOPEZ FONSECA Percy Augusto           |               |       |    |     |       |      |     |     |      |        |     |    |      | 1  |     |           |     |    |    |    |    |  | 3:05  |
| 18           | LOPEZ NORIEGA Diego Roberto           | S             | 4/13  | 31 | 1/3 | 3/10  |      |     |     |      |        |     |    | 1    | 4  |     |           |     |    |    |    |    |  | 47:59 |
| 19           | ZERILLO VILLANUEVA Carlos Gianfranco  | S             | 5/8   | 63 |     | 1/1   | 4/7  |     |     |      |        |     |    |      | 1  |     | 2         |     |    |    | 3  |    |  | 42:46 |
| 22           | CORPUS RODRIGUEZ Johan Rusbel         | S             |       |    |     |       |      |     |     |      |        | 1   |    |      |    | 4   |           |     |    |    |    |    |  | 55:44 |
| 28           | VICUNA HURTADO Fernando               |               |       |    |     |       |      |     |     |      |        |     |    |      |    |     |           |     |    |    |    |    |  |       |
| 29           | TRELLES MALDONALDO Giancarlo          |               | 1/3   | 33 | 0/1 | 1/1   |      | 0/1 |     |      |        |     |    |      | 1  |     |           |     |    |    | 1  |    |  | 34:04 |
| 32           | CHIARELLA CHIARELLA Giacarlo Norberto |               |       |    |     |       |      |     |     |      |        |     |    |      |    |     |           |     |    |    |    |    |  |       |
| 33           | BUITRON MARCET Fernando               | S             | 2/6   | 33 |     |       | 0/4  |     | 2/2 |      |        |     |    |      | 2  | 4   | 1         |     |    |    | 2  |    |  | 56:30 |
| 69           | ALVAREZ SALAS Ricardo Alejandro       |               |       |    |     |       |      |     |     |      |        |     |    |      |    |     |           |     |    |    |    |    |  |       |
| Team / bench |                                       |               |       |    |     |       |      |     |     |      |        |     |    |      |    |     |           |     |    |    | 1  |    |  |       |
| UKUPNO       |                                       |               | 27/51 | 53 | 4/7 | 15/28 | 5/12 | 0/1 | 3/3 | 0/0  | 0/0    | 8   | 1  | 6    | 15 | 13  | 3         | 0   | 3  | 7  | 0  | 0  |  |       |

| Goalkeepers |                                       | Saves / shots |    |     |      |      |     |     |      |     |
|-------------|---------------------------------------|---------------|----|-----|------|------|-----|-----|------|-----|
| #           | Surname and name                      | Tot.          | %  | 9m  | 6m   | Wing | 7m  | FB  | Brk. | LD  |
| 22          | CORPUS RODRIGUEZ Johan Rusbel         | 9/34          | 26 | 1/2 | 5/21 | 2/5  | 1/3 | 0/2 |      | 0/1 |
| 32          | CHIARELLA CHIARELLA Giacarlo Norberto | 0/1           | 0  |     | 0/1  |      |     |     |      |     |
| TOTAL       |                                       | 9/35          | 26 | 1/2 | 5/22 | 2/5  | 1/3 | 0/2 | 0/0  | 0/1 |

Coach: Ivan Fernando Bendezu Lopez

Number of attacks: 63, Efficiency: 43%, Average Duration: 28,1 seconds

### Attack by type of defense

|                | Shots | 9m  | 6m   | Wing | TF | E7 | E2 |
|----------------|-------|-----|------|------|----|----|----|
| On def. 6-0    | 4/7   | 1/2 | 2/3  | 1/2  | 1  | 0  | 1  |
| On def. 5-1    | 15/28 | 3/5 | 8/14 | 4/9  | 9  | 1  | 4  |
| On def. 4-2    | 4/8   | 0/0 | 4/7  | 0/1  | 3  | 0  | 1  |
| On def. press. | 1/4   | 0/0 | 1/4  | 0/0  | 2  | 0  | 0  |
| Fastbreak      | 3/3   |     |      |      | 0  | 0  | 0  |

### Defense by type

|             | Total | 9m  | 6m   | Wing | Stl. | C7 | 2m |
|-------------|-------|-----|------|------|------|----|----|
| Def. 6-0    | 3/4   | 1/1 | 2/2  | 0/1  | 0    | 1  | 1  |
| Def. 5-1    | 1/2   | 0/0 | 1/1  | 0/1  | 11   | 1  | 1  |
| Def. 4-2    | 6/14  | 0/1 | 6/12 | 0/1  | 2    | 0  | 0  |
| Def. 3-3    | 1/1   | 0/0 | 1/1  | 0/0  | 0    | 0  | 0  |
| Def. press. | 10/14 | 0/2 | 7/8  | 3/4  | 0    | 1  | 5  |
| Fastbreak   | 2/2   |     |      |      | 0    | 0  | 0  |

### Attack with goalkeeper out

|                     | Attack |      |       |    | Reaction |     |      |
|---------------------|--------|------|-------|----|----------|-----|------|
|                     | Att.   | Eff. | Shots | TF | FB       | LD  | Tot. |
| GK out (7 on 6)     | 7      | 29%  | 2/3   | 3  | 0/0      | 1/1 | 1/1  |
| GK out pl. minority | 2      | 50%  | 1/2   | 0  | 0/0      | 0/0 | 0/0  |
| GK in               | 54     | 44%  | 24/46 | 12 | 2/2      | 0/0 | 2/2  |

GK out attack is counted if one part or whole attack was GK out

### Defense with opponent goalkeeper out

|       | Attack |      |       |    | Reaction |     |      |
|-------|--------|------|-------|----|----------|-----|------|
|       | Att.   | Eff. | Shots | TF | FB       | LD  | Tot. |
| GK in | 63     | 41%  | 26/41 | 24 | 3/3      | 0/0 | 3/3  |

### Attack with player superiority/minority

|                | Attack |      |       |    | Reaction |     |      |
|----------------|--------|------|-------|----|----------|-----|------|
|                | Att.   | Eff. | Shots | TF | FB       | LD  | Tot. |
| Superiority +2 | 5      | 60%  | 3/5   | 0  | 0/0      | 0/0 | 0/0  |
| Superiority +1 | 8      | 50%  | 4/5   | 3  | 0/0      | 0/0 | 0/0  |
| Normal         | 18     | 61%  | 11/17 | 2  | 1/1      | 1/1 | 2/2  |
| Minority -1    | 7      | 57%  | 4/6   | 2  | 0/0      | 0/0 | 0/0  |
| Minority -2    | 5      | 20%  | 1/4   | 1  | 1/1      | 0/0 | 1/1  |

Player superiority counted at the end of attack (in case it changes during attack)

### Defense with player superiority/minority

|                | Attack |      |       |    | Reaction |     |      |
|----------------|--------|------|-------|----|----------|-----|------|
|                | Att.   | Eff. | Shots | TF | FB       | LD  | Tot. |
| Minority -2    | 6      | 83%  | 5/5   | 1  | 0/0      | 0/0 | 0/0  |
| Minority -1    | 7      | 29%  | 2/5   | 3  | 0/0      | 0/0 | 0/0  |
| Normal         | 19     | 47%  | 9/15  | 4  | 2/2      | 0/0 | 2/2  |
| Superiority +1 | 6      | 17%  | 1/1   | 5  | 0/0      | 0/0 | 0/0  |
| Superiority +2 | 4      | 50%  | 2/2   | 2  | 0/0      | 0/0 | 0/0  |

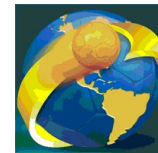
# Jersey number  
Brk. Breakthrough sh.  
C7. Committed 7m  
LD Long distance sh.  
E2 Earned 2m pun.  
Tot. Total shooting  
6m 6m (line) shooting  
As. Assists  
YC. Yellow cards  
9m 9m shooting  
E7 Earned 7m pen.  
RC Red cards  
Wng. Wing shooting  
TF Technical Faults  
BC Blue cards  
FB Fastbreak sh.  
St. Steals  
Blk. Blocks  
7m 7m penalty sh.  
2m 2m punishments  
S Starting Line-up



# IHF South and Central American Emerging Nations Ch

## Colombia (Palmira)

### Group C



Match Team Statistics  
Match No. 15

**Guatemala 26 - 27 Peru**  
(11 - 11) (15 - 16)

24.10.2018. 18:00  
Attendance: 100  
Sports Center Pavillon Blanco

Referees: Ines Paolantoni (ARG) / Mariana Garcia (ARG)

### Shot distribution by player

4 C. Velez Lazo

|  |  |  |
|--|--|--|
|  |  |  |
|  |  |  |
|  |  |  |

8 G. Gutelius Diaz

|     |  |     |
|-----|--|-----|
| 1/1 |  | 2/2 |
| 2/2 |  |     |
|     |  | 1/1 |

1 miss.

9 C. Trelles Maldonado

|     |  |     |
|-----|--|-----|
|     |  |     |
|     |  | 1/1 |
| 1/2 |  | 3/3 |

2 miss.

10 H. Acuna Seminario

|  |  |  |
|--|--|--|
|  |  |  |
|  |  |  |
|  |  |  |

15 A. Camborda Leon

|     |  |     |
|-----|--|-----|
|     |  |     |
| 1/2 |  | 2/2 |
| 1/1 |  |     |

1 miss.

16 P. Lopez Fonseca

|  |  |  |
|--|--|--|
|  |  |  |
|  |  |  |
|  |  |  |

18 D. Lopez Noriega

|     |     |     |
|-----|-----|-----|
|     |     |     |
| 1/4 | 1/1 | 1/3 |
| 0/1 |     | 1/1 |

1 post 2 miss.

19 C. Zerillo Villanueva

|     |     |     |
|-----|-----|-----|
|     |     |     |
| 1/1 |     | 3/3 |
|     | 0/1 | 1/1 |

1 post 1 miss.

28 F. Vicuna Hurtado

|  |  |  |
|--|--|--|
|  |  |  |
|  |  |  |
|  |  |  |

29 G. Trelles Maldonado

|     |     |     |
|-----|-----|-----|
|     | 0/1 |     |
| 0/1 |     |     |
|     |     | 1/1 |

33 F. Buitron Marcet

|     |  |     |
|-----|--|-----|
|     |  |     |
|     |  | 0/1 |
| 2/2 |  |     |

1 post 2 miss.

69 R. Alvarez Salas

|  |  |  |
|--|--|--|
|  |  |  |
|  |  |  |
|  |  |  |

**TOTAL**

|      |     |      |
|------|-----|------|
| 1/1  | 0/1 | 2/2  |
| 5/10 | 1/1 | 7/10 |
| 4/6  | 0/1 | 7/7  |

3 post 9 miss.

### Saves distribution goalkeepers

22 J. Corpus Rodriguez

|     |     |      |
|-----|-----|------|
| 0/1 | 0/2 | 0/2  |
| 4/6 | 1/2 | 3/10 |
| 0/3 | 0/1 | 1/7  |

32 G. Chiarella Chiarella

|  |     |  |
|--|-----|--|
|  |     |  |
|  |     |  |
|  | 0/1 |  |

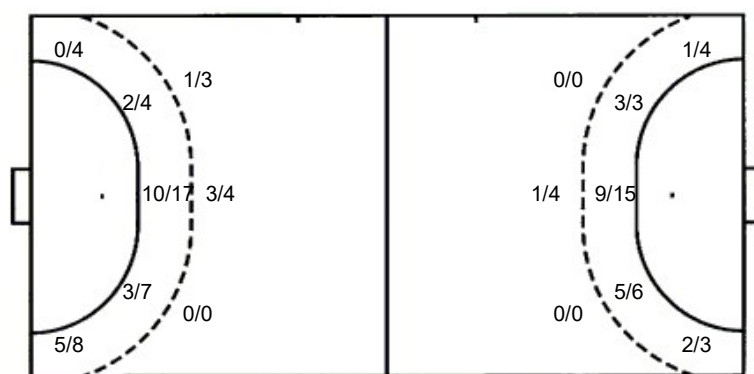
**TOTAL**

|     |     |      |
|-----|-----|------|
| 0/1 | 0/2 | 0/2  |
| 4/6 | 1/2 | 3/10 |
| 0/3 | 0/2 | 1/7  |

### Shots by position

ATTACK

DEFENSE



7m penalties 0/1  
Fastbreak 3/3  
Breakthrough 0/0  
Long dist. 0/0

7m penalties 2/3  
Fastbreak 2/2  
Breakthrough 0/0  
Long dist. 1/1

### Shooting statistics

| Position     | Goals     | Sav.      | Miss.    | Post     | Blk.     | Total     | %         |
|--------------|-----------|-----------|----------|----------|----------|-----------|-----------|
| Back (9m)    | 4         | 2         | 1        | 0        | 0        | 7         | 57        |
| Line (6m)    | 15        | 7         | 5        | 1        | 0        | 28        | 54        |
| Wing         | 5         | 2         | 3        | 2        | 0        | 12        | 42        |
| 7m penalties | 0         | 1         | 0        | 0        | 0        | 1         | 0         |
| Fastbreak    | 3         | 0         | 0        | 0        | 0        | 3         | 100       |
| Breakthrough | 0         | 0         | 0        | 0        | 0        | 0         | 0         |
| <b>Total</b> | <b>27</b> | <b>12</b> | <b>9</b> | <b>3</b> | <b>0</b> | <b>51</b> | <b>53</b> |