

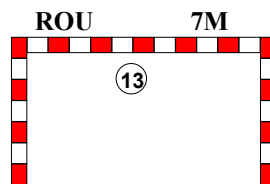
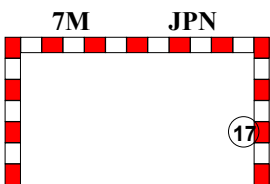
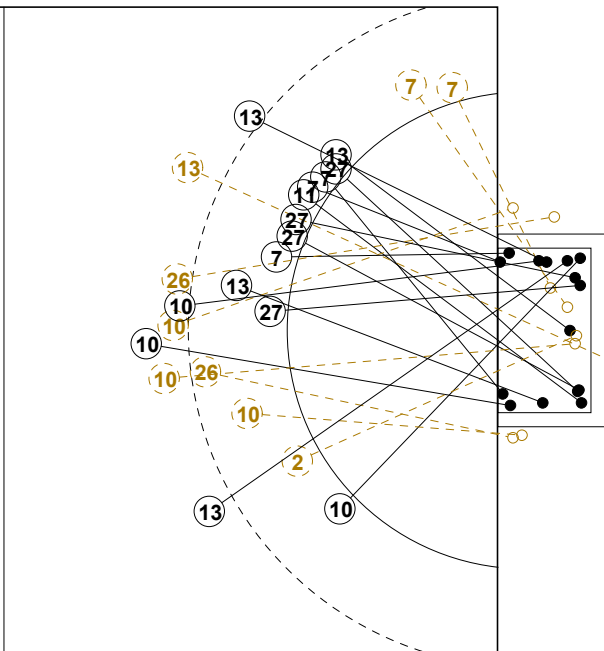
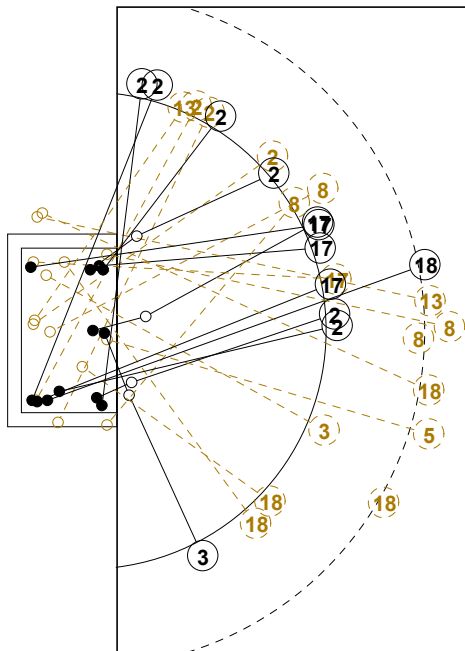


# 2016 IHF WOMEN'S JUNIOR (U20) WORLD CHAMPIONSHIP IN RUS PICTORIAL MATCH STATISTICS

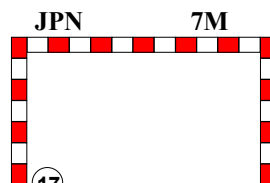
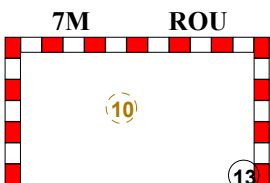
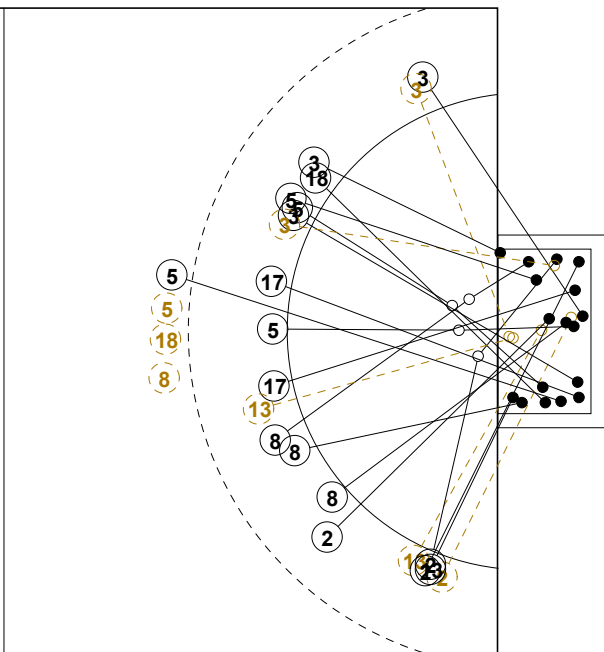
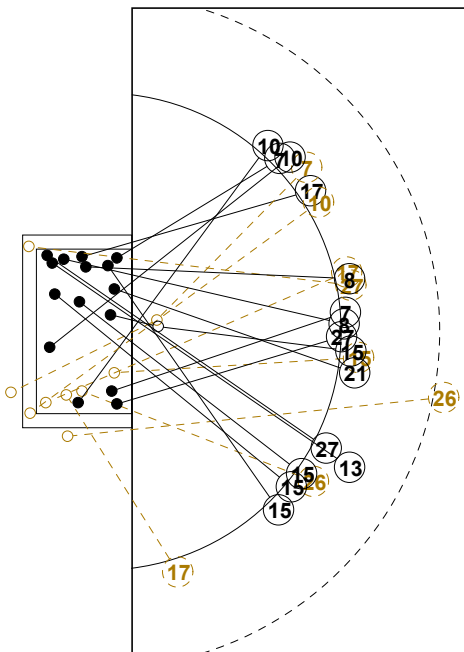
ROUND 6

MATCH 72

201611072-21-1/1



1st Half  
13 : 16



2nd Half  
32 : 31



## 2016 IHF WOMEN'S JUNIOR (U20) WORLD CHAMPIONSHIP IN RUS

### INDV/TEAM MATCH STATISTICS

OFFICIAL  
HANDBALL  
Women's Junior

EIGHTH FINALS  
ROUND 6

GROUP X  
MATCH 72

201611072-14-1/2  
Dinamo Hall  
11/07/2016 20:45

No.	Name	Field Shot	Line Shot	Wing Shot	Fast Brk.	Brk. Thr.	Free Thr.	7m Thr.	Total	Rate %	ASST.	ERR.	WAR.	2'	D+DR	TIME
<b>ROMANIA(ROU)</b>																
<i>(COURT PLAYER)</i>																
1	ION Madalina									0.0%						00:03:50
2	TAIVAN Andreea				0/1				0/1	0.0%	1			1		00:20:05
3	SEVERIN A.									0.0%						00:00:00
7	DINDILIGAN A.		1/1	0/1	4/6				5/8	62.5%	1	2		2		00:49:37
8	CRAIU Florentina		1/1		1/1				2/2	100%		1				00:15:37
10	ILIE Alina	2/4	1/2		1/1	1/2		0/1	5/10	50.0%		5				00:38:45
11	VASILIU Sonia				1/1				1/1	100%				1		00:16:51
12	CURMENT B.T.									0.0%						00:00:00
13	LASLO Cristina	1/2	1/1		1/1	1/1	1/1	2/2	7/8	87.5%	6	6				00:58:17
15	DACHE Elena		1/2			3/3			4/5	80.0%	1	1				00:22:00
16	DUMANSKA Yuliya									0.0%	1					00:56:10
17	STOICANESCU E.H.			0/1	0/1	1/1			1/3	33.3%		3				00:40:31
20	ILIE Florenta									0.0%						00:02:58
21	CORBAN Daniela					1/1			1/1	100%		3				00:06:57
26	POLOCOSER Anca	0/3				0/1			0/4	0.0%		1		1		00:34:33
27	OSTASE Lorena		5/6		1/1				6/7	85.7%	1	2	1			00:43:03
<b>Total</b>		3/9	10/13	0/2	9/13	7/9	1/1	2/3	32/50	64.0%	11	24	1	5		
<i>(GOALKEEPER)</i>																
1	ION Madalina		0/1	0/1					0/2	0.0%						00:03:50
16	DUMANSKA Yuliya	2/4	3/10	5/11	5/13	0/4		0/2	15/44	34.1%	1					00:56:10
<b>Total</b>		2/4	3/11	5/12	5/13	0/4		0/2	15/46	32.6%	1					

## COURT PLAYER: GOALS/SHOTS

## GOALKEEPER: SAVED/SHOTS

TEAM TOTALS	GOALS	SAVED	MISSED	POST	BLOCKED	TOTAL	RATE(%)
Field Shot	3	1	5			9	33.3%
Line Shot	10	1	1	1		13	76.9%
Wing Shot		2				2	0.0%
Fastbreak	9	3	1			13	69.2%
Breakthrough	7	1		1		9	77.8%
Free Throw	1					1	100.0%
7M-Throw	2	1				3	66.7%



## 2016 IHF WOMEN'S JUNIOR (U20) WORLD CHAMPIONSHIP IN RUS

### INDV/TEAM MATCH STATISTICS

OFFICIAL  
HANDBALL  
Women's Junior

EIGHTH FINALS  
ROUND 6

GROUP X  
MATCH 72

201611072-14-2/2  
Dinamo Hall  
11/07/2016 20:45

No.	Name	Field Shot	Line Shot	Wing Shot	Fast Brk.	Brk. Thr.	Free Thr.	7m Thr.	Total	Rate %	ASST.	ERR.	WAR.	2'	D+DR	TIME
<b>JAPAN(JPN)</b>																
<i>(COURT PLAYER)</i>																
1	NAKANO Tomoka									0.0%						00:00:21
2	FUJITA Asuka			4/7	5/6				9/13	69.2%	1					01:00:00
3	MITSUHASHI Miki		1/1	2/3	1/3				4/7	57.1%	2	3		1		00:57:37
4	TAKASUGI Momoka									0.0%	2		1	1		00:11:35
5	KAWARABATA Yuko	1/3	1/1		1/1	1/1			4/6	66.7%	1	2				00:37:49
6	WADA Ryoka									0.0%						00:00:00
8	TOMAI Natsuki	0/3	1/1		1/2	1/2			3/8	37.5%	3	3				01:00:00
9	SASAKI Hanae									0.0%						00:00:00
10	IJICHI Miki									0.0%	2		1	2		00:19:06
11	TOGAWA Mana									0.0%						00:00:05
12	KAMIYA Reina									0.0%						00:00:00
13	YAMAGUCHI Erika	0/1	0/1	1/2	0/1				1/5	20.0%	4	6				00:28:47
15	SAWAI Sakura									0.0%						00:00:00
16	OSAWA Abinaomi									0.0%		2				00:59:39
17	AO Reiko		5/6			1/1		2/3	8/10	80.0%	2	2	1			00:55:22
18	WATANABE Maaya	1/4	0/1	0/1		1/1			2/7	28.6%	1					00:22:08
<b>Total</b>		2/11	8/11	7/13	8/13	4/5		2/3	31/56	55.4%	18	18	3	4		
<i>(GOALKEEPER)</i>																
1	NAKANO Tomoka							1/2	1/2	50.0%						00:00:21
16	OSAWA Abinaomi	1/4	1/11	2/2	3/12	1/8	0/1	0/1	8/39	20.5%		2				00:59:39
<b>Total</b>			1/11	2/2	3/12	1/8	0/1	1/3	9/41	22.0%		2				

## COURT PLAYER: GOALS/SHOTS

## GOALKEEPER: SAVED/SHOTS

TEAM TOTALS	GOALS	SAVED	MISSED	POST	BLOCKED	TOTAL	RATE(%)
Field Shot	2	2	2		5	11	18.2%
Line Shot	8	3				11	72.7%
Wing Shot	7	5		1		13	53.8%
Fastbreak	8	5				13	61.5%
Breakthrough	4			1		5	80.0%
Free Throw							0.0%
7M-Throw	2		1			3	66.7%





2016 IHF WOMEN'S JUNIOR (U20) WORLD CHAMPIONSHIP IN RUS  
MATCH SHOT REPORT

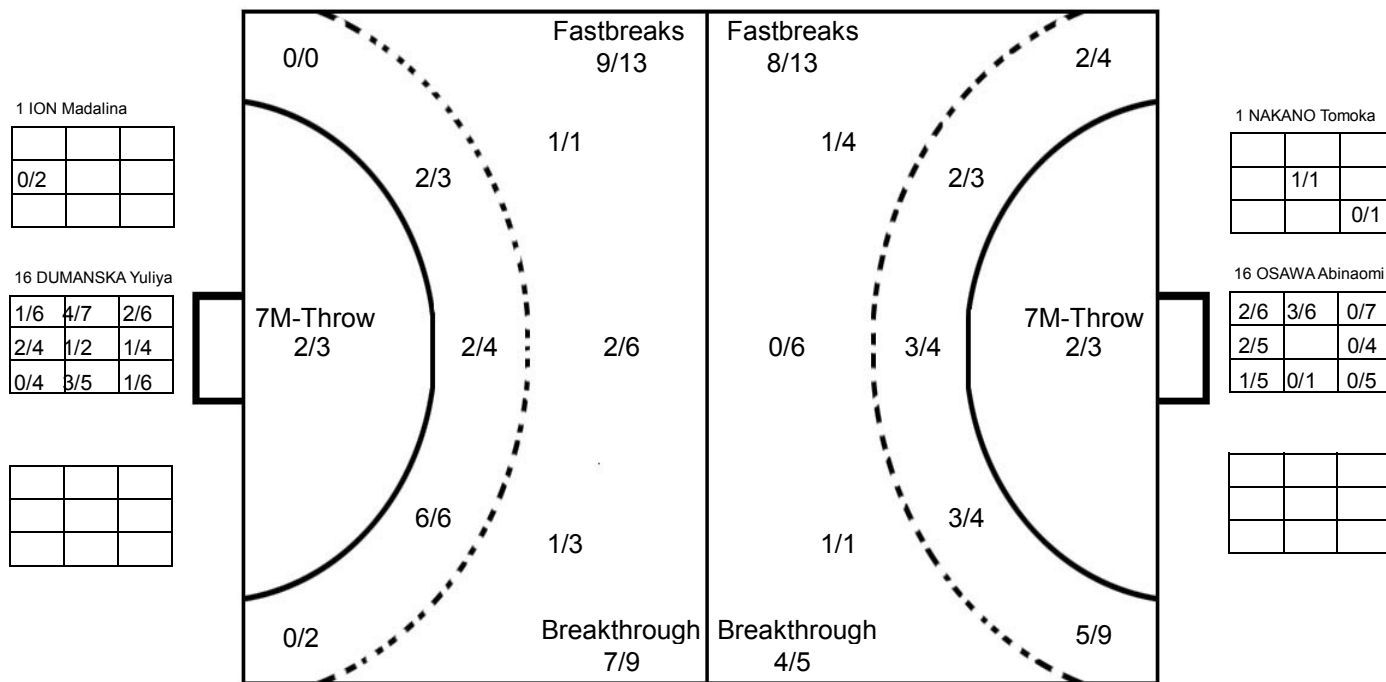
ROUND 6

MATCH 72

201611072-41-1/1

**ROMANIA**

1 ION Madalina	2 TAIVAN Andreea	3 SEVERIN A.	7 DINDILIGAN A.	8 CRAIU Florentina	10 ILIE Alina	11 VASILIU Sonia	12 CURMENT B.T.
Post - 0 Miss - 0 Block - 0	Post - 0 Miss - 0 Block - 0	Post - 0 Miss - 0 Block - 0	Post - 0 Miss - 1 Block - 0	Post - 0 Miss - 0 Block - 0	Post - 1 Miss - 2 Block - 0	Post - 0 Miss - 0 Block - 0	Post - 0 Miss - 0 Block - 0
13 LASLO Cristina	15 DACHE Elena	16 DUMANSKA Yuliya	17 STOICANESCU	20 ILIE Florenta	21 CORBAN Daniela	26 POLOCOSER Anca	27 OSTASE Lorena
Post - 0 Miss - 1 Block - 0	Post - 0 Miss - 0 Block - 0	Post - 0 Miss - 0 Block - 0	Post - 0 Miss - 0 Block - 0	Post - 0 Miss - 0 Block - 0	Post - 0 Miss - 0 Block - 0	Post - 0 Miss - 3 Block - 0	Post - 1 Miss - 0 Block - 0



**JAPAN**

1 NAKANO Tomoka	2 FUJITA Asuka	3 MITSUHASHI Miki	4 TAKASUGI Momoka	5 KAWARABATA Yuko	6 WADA Ryoka	8 TOMAI Natsuki	9 SASAKI Hanae
Post - 0 Miss - 0 Block - 0	Post - 1 Miss - 0 Block - 0	Post - 0 Miss - 0 Block - 0	Post - 0 Miss - 0 Block - 0	Post - 0 Miss - 0 Block - 1	Post - 0 Miss - 0 Block - 0	Post - 1 Miss - 0 Block - 2	Post - 0 Miss - 0 Block - 0
10 IJICHI Miki	11 TOGAWA Mana	12 KAMIYA Reina	13 YAMAGUCHI Erika	15 SAWAI Sakura	16 OSAWA Abinaomi	17 AO Reiko	18 WATANABE Maaya
Post - 0 Miss - 0 Block - 0	Post - 0 Miss - 0 Block - 0	Post - 0 Miss - 0 Block - 0	Post - 0 Miss - 1 Block - 0	Post - 0 Miss - 0 Block - 0	Post - 0 Miss - 0 Block - 0	Post - 0 Miss - 1 Block - 0	Post - 0 Miss - 1 Block - 2

