



Super Globe

Qatar (Doha)

Semifinal



Match Team Statistics
Match No. 8

Al Sadd 20 - 26 Fuchse Berlin
(9 - 11) (11 - 15)

17.10.2018. 19:00
Attendance: 300
Duhail Sports Hall

Referees: Ramzi Khenissi (TUN) / Ismail Boualloucha (TUN)

Al Sadd

#	Surname and name	S	Goals / shots								Attack				Def.			Penalties			TP			
			Tot.	%	9m	6m	Wing	7m	FB	Brk.	LD	As.	E7	E2	TF	St.	C7	Blk	YC	2m		RC	BC	
1	ALIHODZIC Irhad																							
5	SATTAM S K AL- KUWARI Abdulla																							
6	MAHMOOD A M ABDELMAGED Mohammed	S	1/3	33			1/3							1										56:45
10	ABDULHADI S M AL- KARBI Abdulla																							
12	OLUKUNLE YUSSUF Rasheed	S																						58:57
15	HAJ YOUSSEF Khaled	S	8/9	89	3/4			2/2	1/1	2/2				3		7	3	1	1					60:00
17	NOWRADDINE DENGUIR Amir	S	5/16	31	4/14	1/2									2	1	2		1	1				53:45
18	ASHRAF A G AHMED Nour	S	1/2	50		1/2									1	1				2				36:20
19	EDHAM S S AL- KUWARI Faisal																							2:45
43	MOHAMED A BAKHDER Khalid		2/3	67						2/3					1	1								35:05
44	MITROVIC Nikola	S	0/4	0	0/4											2								17:17
93	ALNOORI A AYED Hamdi	S	2/3	67			2/3							1		2	1							56:24
94	ABDULMUHSEN SALEH AL-QAHTANI Fahd																							
97	BINHASSAN ISSAOUI Ouday		1/1	100		1/1										1		1	1	1				42:42
Team / bench																						1		
UKUPNO			20/41	49	7/22	3/5	3/6	2/2	1/1	4/5	0/0			4	2	2	15	5	4	2	3	3	0	0

#	Surname and name	Saves / shots								
		Tot.	%	9m	6m	Wing	7m	FB	Brk.	LD
1	ALIHODZIC Irhad	0/1	0				0/1			
12	OLUKUNLE YUSSUF Rasheed	8/33	24	3/6	3/6	0/4	0/2	0/8	2/7	
TOTAL		8/34	24	3/6	3/6	0/4	0/3	0/8	2/7	0/0

Coach: **Nenad Maksic**

Number of attacks: 45, Efficiency: 44%, Average Duration: 55,7 seconds

Attack by type of defense

	Shots	9m	6m	Wing	TF	E7	E2
On def. 6-0	11/22	4/12	3/5	2/2	7	2	1
On def. 5-1	6/16	3/10	0/0	1/4	8	0	1
Fastbreak	1/1				0	0	0

Defense by type

	Total	9m	6m	Wing	Stl.	C7	2m
Def. 6-0	7/14	3/6	2/5	2/2	4	3	1
Def. 5-1	8/12	0/2	1/2	2/3	1	1	2
Def. 3-2-1	0/1	0/0	0/0	0/0	0	0	0
Fastbreak	8/8				0	0	0

Attack with goalkeeper out

	Attack				Reaction		
	Att.	Eff.	Shots	TF	FB	LD	Tot.
GK in	45	44%	20/41	15	8/8	0/0	8/8

GK out attack is counted if one part or whole attack was GK out

Defense with opponent goalkeeper out

	Attack				Reaction		
	Att.	Eff.	Shots	TF	FB	LD	Tot.
GK in	45	58%	26/39	14	1/1	0/0	1/1

Attack with player superiority/minority

	Attack				Reaction		
	Att.	Eff.	Shots	TF	FB	LD	Tot.
Superiority +2	1	0%	0/0	1	0/0	0/0	0/0
Superiority +1	6	67%	4/6	2	2/2	0/0	2/2
Normal	27	48%	13/23	10	4/4	0/0	4/4
Minority -1	5	20%	1/4	1	2/2	0/0	2/2

Player superiority counted at the end of attack (in case it changes during attack)

Defense with player superiority/minority

	Attack				Reaction		
	Att.	Eff.	Shots	TF	FB	LD	Tot.
Minority -1	5	120%	6/7	0	0/0	0/0	0/0
Normal	28	50%	14/20	10	1/1	0/0	1/1
Superiority +1	6	67%	4/8	1	0/0	0/0	0/0

Jersey number Tot. Total shooting 6m 6m (line) shooting 9m 9m shooting Wng. Wing shooting FB Fastbreak sh. 7m 7m penalty sh.
Brk. Breakthrough sh. LD Long distance sh. As. Assists E7 Earned 7m pen. TF Technical Faults St. Steals 2m 2m punishments
C7. Committed 7m E2 Earned 2m pun. YC. Yellow cards RC Red cards BC Blue cards Blk. Blocks S Starting Line-up



Super Globe

Qatar (Doha)

Semifinal



Match Team Statistics
Match No. 8

Al Sadd 20 - 26 Fuchse Berlin
(9 - 11) (11 - 15)

17.10.2018. 19:00
Attendance: 300
Duhail Sports Hall

Referees: Ramzi Khenissi (TUN) / Ismail Boualloucha (TUN)

Shot distribution by player

11. Alihodzic

5 A. Sattam S K Al-Kuwari

6 M. Mahmood A M Abdelmaged

1/1	0/2	

10 A. Abdulhadi S M Al-Karbi

12 R. Olukunle Yussuf

15 K. Haj Youssef

	1/1	
		3/3
2/2		2/2

1 miss.

17 A. Nowraddine Denguir

	1/1	1/1
1/2	0/1	0/1
0/1	1/2	

2 miss. 4 block 1/1 lob

18 N. Ashraf A G Ahmed

	1/1	0/1

19 F. Edham S S Al-Kuwari

43 K. Mohamed A Bakhder

		1/1
		1/1

1 post

44 N. Mitrovic

		0/1

1 miss. 2 block

93 H. Alnoori A Aayed

1/1		
	0/1	

1/1 lob

94 F. Abdulmuhsen Saleh Al-Qatani

97 O. Binhassan Issaoui

1/1 lob

TOTAL

2/2	3/5	2/3
1/2	0/2	4/6
2/3	1/2	2/2

1 post 4 miss. 6 block 3/3 lob

Saves distribution goalkeepers

11 I. Alihodzic

		0/1

12 R. Olukunle Yussuf

1/4	1/2	1/2
1/7	1/1	3/10
0/2	0/1	0/4

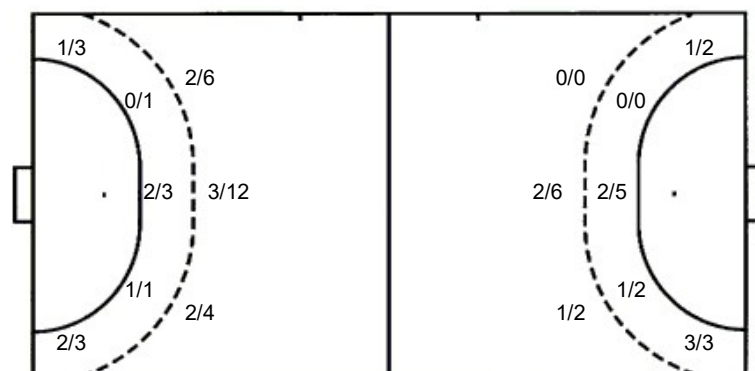
TOTAL

1/4	1/2	1/2
1/7	1/1	3/11
0/2	0/1	0/4

Shots by position

ATTACK

DEFENSE



Shooting statistics

Position	Goals	Sav.	Miss.	Post	Blk.	Total	%
Back (9m)	7	5	4	0	6	22	32
Line (6m)	3	2	0	0	0	5	60
Wing	3	3	0	0	0	6	50
7m penalties	2	0	0	0	0	2	100
Fastbreak	1	0	0	0	0	1	100
Breakthrough	4	0	0	1	0	5	80
Total	20	10	4	1	6	41	49

7m penalties 2/2
Fastbreak 1/1
Breakthrough 4/5
Long dist. 0/0

7m penalties 3/4
Fastbreak 8/8
Breakthrough 5/7
Long dist. 0/0

Jersey number Tot. Total shooting 6m 6m (line) shooting 9m 9m shooting Wng. Wing shooting FB Fastbreak sh. 7m 7m penalty sh.
Brk. Breakthrough sh. LD Long distance sh. As. Assists E7 Earned 7m pen. TF Technical Faults St. Steals 2m 2m punishments
C7. Committed 7m E2 Earned 2m pun. YC. Yellow cards RC Red cards BC Blue cards Blk. Blocks S Starting Line-up



Super Globe

Qatar (Doha)

Semifinal



Match Team Statistics
Match No. 8

Al Sadd 20 - 26 Fuchse Berlin
(9 - 11) (11 - 15)

17.10.2018. 19:00
Attendance: 300
Duhail Sports Hall

Referees: Ramzi Khenissi (TUN) / Ismail Boualloucha (TUN)

Fuchse Berlin

#	Surname and name	S	Goals / shots								Attack				Def.			Penalties			TP			
			Tot.	%	9m	6m	Wing	7m	FB	Brk.	LD	As.	E7	E2	TF	St.	C7	Blk	YC	2m		RC	BC	
3	WIEDE Fabian	S	2/3	67	1/2					1/1				3										50:22
4	ELISSON Bjarki	S	3/5	60		0/1	1/2			2/2						1	1	1						51:27
6	HOLM Jacob		6/9	67	2/3					1/1	3/5			1		1								32:11
10	GOJUN Jakov	S																3	1	1				37:08
12	HEINEVETTER Silvio	S											1		1									29:52
16	SEMISCH Malte																							29:02
18	LINDBERG Hans		6/6	100				2/2	3/3	1/1						1								15:02
21	ZAKRISSON Mattias	S	4/4	100				1/1		3/3				1		1		1		1	1			40:33
24	SIMAK Frederik	S	1/4	25	0/2					0/1			1		1	1								49:11
28	SCHMIDT Erik	S	3/6	50		2/5							1		2	3	2	3						48:43
42	JALLOUZ Wael																					1		6:00
43	REISSKY Christoph		0/1	0	0/1											1								10:08
93	MARSENIC Mijajlo		1/1	100		1/1								1		1						1		20:21
	Team / bench																							
	UKUPNO		26/39	67	3/8	3/7	4/5	3/4	8/8	5/7	0/0			5	4	3	14	5	2	6	3	3	0	0

#	Surname and name	Saves / shots								
		Tot.	%	9m	6m	Wing	7m	FB	Brk.	LD
12	HEINEVETTER Silvio	6/15	40	2/5	2/4	2/2	0/2	0/1	0/1	
16	SEMISCH Malte	4/15	27	3/7	0/1	1/4			0/3	
	TOTAL	10/30	33	5/12	2/5	3/6	0/2	0/1	0/4	0/0

Coach: **Velimir Petkovic**

Number of attacks: 45, Efficiency: 58%, Average Duration: 24,3 seconds

Attack by type of defense

	Shots	9m	6m	Wing	TF	E7	E2
On def. 6-0	7/14	3/6	2/5	2/2	10	3	1
On def. 5-1	8/12	0/2	1/2	2/3	4	1	2
On def. 3-2-1	0/1	0/0	0/0	0/0	0	0	0
Fastbreak	8/8				0	0	0

Defense by type

	Total	9m	6m	Wing	Stl.	C7	2m
Def. 6-0	11/22	4/12	3/5	2/2	3	2	2
Def. 5-1	6/16	3/10	0/0	1/4	2	0	1
Fastbreak	1/1				0	0	0

Attack with goalkeeper out

	Attack				Reaction		
	Att.	Eff.	Shots	TF	FB	LD	Tot.
GK in	45	58%	26/39	14	1/1	0/0	1/1

GK out attack is counted if one part or whole attack was GK out

Attack with player superiority/minority

	Attack				Reaction		
	Att.	Eff.	Shots	TF	FB	LD	Tot.
Superiority +1	5	120%	6/7	0	0/0	0/0	0/0
Normal	28	50%	14/20	10	1/1	0/0	1/1
Minority -1	6	67%	4/8	1	0/0	0/0	0/0

Player superiority counted at the end of attack (in case it changes during attack)

Defense with opponent goalkeeper out

	Attack				Reaction		
	Att.	Eff.	Shots	TF	FB	LD	Tot.
GK in	45	44%	20/41	15	8/8	0/0	8/8

Defense with player superiority/minority

	Attack				Reaction		
	Att.	Eff.	Shots	TF	FB	LD	Tot.
Minority -2	1	0%	0/0	1	0/0	0/0	0/0
Minority -1	6	67%	4/6	2	2/2	0/0	2/2
Normal	27	48%	13/23	10	4/4	0/0	4/4
Superiority +1	5	20%	1/4	1	2/2	0/0	2/2

Jersey number Tot. Total shooting 6m 6m (line) shooting 9m 9m shooting Wng. Wing shooting FB Fastbreak sh. 7m 7m penalty sh.
Brk. Breakthrough sh. LD Long distance sh. As. Assists E7 Earned 7m pen. TF Technical Faults St. Steals 2m 2m punishments
C7. Committed 7m E2 Earned 2m pun. YC. Yellow cards RC Red cards BC Blue cards Blk. Blocks S Starting Line-up



Super Globe

Qatar (Doha)

Semifinal



Match Team Statistics
Match No. 8

Al Sadd 20 - 26 Fuchse Berlin
(9 - 11) (11 - 15)

17.10.2018. 19:00
Attendance: 300
Duhail Sports Hall

Referees: Ramzi Khenissi (TUN) / Ismail Boualloucha (TUN)

Shot distribution by player

3 F. Wiede

1/1		1/1

1 block

4 B. Elisson

1/1	0/1	1/1
		1/1

1 post

6 J. Holm

		1/2
3/4		2/3

10 J. Gojun

12 S. Heinevetter

16 M. Semisch

18 H. Lindberg

1/1		
1/1		1/1
1/1		2/2

21 M. Zakrisson

2/2		
1/1	1/1	

24 F. Simak

	1/2	

1 post 1 block

28 E. Schmidt

0/1		
		3/4

1 post

42 W. Jallouz

43 C. Reissky

		0/1

93 M. Marsenic

		1/1

TOTAL

3/4	1/2	1/2
6/7	0/1	8/11
2/2	1/1	4/4

3 post 2 block

Saves distribution goalkeepers

12 S. Heinevetter

	2/4	1/1
		1/3
1/2	1/2	0/2

16 M. Semisch

0/2	0/1	0/2
1/2	2/2	1/3
0/1		

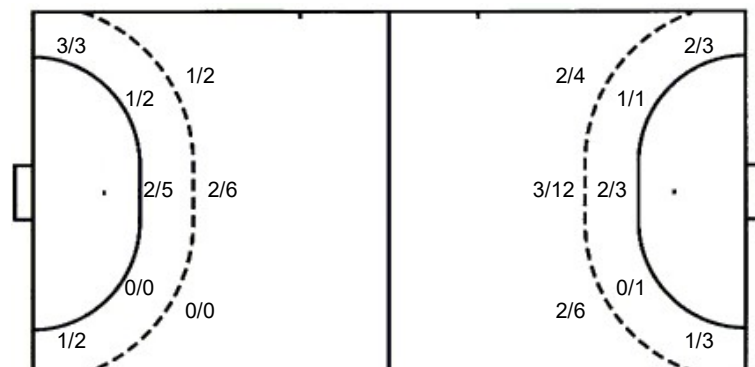
TOTAL

0/2	2/5	1/3
1/2	2/2	2/6
1/3	1/2	0/2

Shots by position

ATTACK

DEFENSE



7m penalties 3/4
Fastbreak 8/8
Breakthrough 5/7
Long dist. 0/0

7m penalties 2/2
Fastbreak 1/1
Breakthrough 4/5
Long dist. 0/0

Shooting statistics

Position	Goals	Sav.	Miss.	Post	Blk.	Total	%
Back (9m)	3	3	0	0	2	8	38
Line (6m)	3	3	0	1	0	7	43
Wing	4	0	0	1	0	5	80
7m penalties	3	0	0	1	0	4	75
Fastbreak	8	0	0	0	0	8	100
Breakthrough	5	2	0	0	0	7	71
Total	26	8	0	3	2	39	67

Jersey number Tot. Total shooting 6m 6m (line) shooting 9m 9m shooting Wng. Wing shooting FB Fastbreak sh. 7m 7m penalty sh.
Brk. Breakthrough sh. LD Long distance sh. As. Assists E7 Earned 7m pen. TF Technical Faults St. Steals 2m 2m punishments
C7. Committed 7m E2 Earned 2m pun. YC. Yellow cards RC Red cards BC Blue cards Blk. Blocks S Starting Line-up