



Super Globe

Qatar (Doha)

Quarterfinal



Match Team Statistics
Match No. 3

Taubate 25 - 33 Fuchse Berlin
(11 - 19) (14 - 14)

16.10.2018. 17:00
Attendance: 300
Duhail Sports Hall

Referees: Martin Gjeding (DEN) / Mads Hansen (DEN)

Taubate

#	Surname and name	S	Goals / shots									Attack				Def.			Penalties			TP		
			Tot.	%	9m	6m	Wing	7m	FB	Brk.	LD	As.	E7	E2	TF	St.	C7	Blk	YC	2m	RC		BC	
1	SANTOS Maik	S																						11:36
2	SOARES Andre	S	1/1	100				1/1									1	1						31:16
5	LOBATO Rafael		3/6	50				0/2	2/2	1/2														18:17
6	CANDIDO Lucas	S	1/2	50				1/2																33:25
7	SILVA André	S	2/4	50	0/1				2/3							1		4	1					26:38
8	BORGES Guilherme		2/5	40		0/1			0/1	2/3											1			16:47
9	CANETE Tomas		1/2	50	1/2																			10:17
10	SANTOS Thiago		3/6	50	2/3				0/1	0/1	1/1				1	1				1				44:03
11	ANDRADE Cleber		1/1	100						1/1					1							2		29:03
21	CONCEIÇÃO André Luiz																							21:21
23	QUOST Rodrigo	S	1/3	33		1/3											1	1		1				25:18
25	TEIXEIRA Vinicius		1/1	100		1/1																1		27:30
28	OLIVEIRA Guilherme	S	1/2	50	1/2									1	1									19:02
33	GAMA Guilherme	S	4/7	57	2/5	1/1								2	1	1	4	1		1				27:25
35	PERRELA Matheus	S	4/7	57	1/3						3/4				2		1	1		1				33:54
81	NASCIMENTO Luiz Ricardo																							45:55
	Team / bench																							
	UKUPNO		25/47	53	7/16	3/6	2/5	4/7	4/7	5/6	0/0			5	6	2	15	7	2	2	0	4	0	0

#	Surname and name	Saves / shots								
		Tot.	%	9m	6m	Wing	7m	FB	Brk.	LD
1	SANTOS Maik	0/10	0		0/3	0/3		0/3	0/1	
81	NASCIMENTO Luiz Ricardo	8/31	26	3/8	3/10	1/5	1/2	0/1	0/5	
	TOTAL	8/41	20	3/8	3/13	1/8	1/2	0/4	0/6	0/0

Coach: **Marcus Oliveira**

Number of attacks: 55, Efficiency: 45%, Average Duration: 36,7 seconds

Attack by type of defense

	Shots	9m	6m	Wing	TF	E7	E2
On def. 6-0	13/25	5/12	3/4	2/5	11	4	1
On def. 5-1	4/6	2/2	0/2	0/0	3	2	1
On def. 4-2	0/1	0/1	0/0	0/0	1	0	0
On def. 3-2-1	0/0	0/0	0/0	0/0	0	0	0
Fastbreak	4/7				0	0	0

Defense by type

	Total	9m	6m	Wing	Stl.	C7	2m
Def. 6-0	14/20	4/7	3/6	4/4	7	2	3
Def. 5-1	8/12	1/4	4/4	1/2	0	0	0
Def. 4-2	5/7	0/1	2/3	2/2	0	0	1
Def. 3-2-1	0/1	0/1	0/0	0/0	0	0	0
Fastbreak	4/5				0	0	0

Attack with goalkeeper out

	Attack				Reaction		
	Att.	Eff.	Shots	TF	FB	LD	Tot.
GK out (7 on 6)	1	0%	0/0	0	1/1	0/0	1/1
GK out pl. minority	1	0%	0/1	1	0/0	0/0	0/0
GK in	53	47%	25/45	14	3/4	0/0	3/4

GK out attack is counted if one part or whole attack was GK out

Defense with opponent goalkeeper out

	Attack				Reaction		
	Att.	Eff.	Shots	TF	FB	LD	Tot.
GK out (7 on 6)	0	0%	0/0	1	0/0	0/0	0/0
GK out pl. super.	1	0%	0/1	0	0/0	0/0	0/0
GK in	53	60%	32/46	17	4/7	0/0	4/7

Attack with player superiority/minority

	Attack				Reaction		
	Att.	Eff.	Shots	TF	FB	LD	Tot.
Superiority +2	1	100%	1/1	0	0/0	0/0	0/0
Superiority +1	7	57%	4/5	3	2/2	0/0	2/2
Normal	38	45%	17/33	9	1/2	0/0	1/2
Minority -1	7	29%	2/6	2	0/0	0/0	0/0

Player superiority counted at the end of attack (in case it changes during attack)

Defense with player superiority/minority

	Attack				Reaction		
	Att.	Eff.	Shots	TF	FB	LD	Tot.
Minority -1	9	67%	6/8	3	0/1	0/0	0/1
Normal	35	54%	19/31	14	4/6	0/0	4/6
Superiority +1	8	63%	5/6	1	0/0	0/0	0/0
Superiority +2	1	100%	1/1	0	0/0	0/0	0/0

Jersey number Tot. Total shooting 6m 6m (line) shooting 9m 9m shooting Wng Wing shooting FB Fastbreak sh. 7m 7m penalty sh.
 Brk. Breakthrough sh. LD Long distance sh. As. Assists E7 Earned 7m pen. TF Technical Faults St. Steals 2m 2m punishments
 C7. Committed 7m E2 Earned 2m pun. YC. Yellow cards RC Red cards BC Blue cards Blk. Blocks S Starting Line-up



Super Globe

Qatar (Doha)

Quarterfinal



Match Team Statistics
Match No. 3

Taubate 25 - 33 Fuchse Berlin
(11 - 19) (14 - 14)

16.10.2018. 17:00
Attendance: 300
Duhail Sports Hall

Referees: Martin Gjeding (DEN) / Mads Hansen (DEN)

Shot distribution by player

2 A. Soares

1/1 lob

5 R. Lobato

1/1		
1/2		
	1/2	

1 miss.

6 L. Candido

		0/1
		1/1

7 A. Silva

		1/1
	0/1	
		1/1

1 miss.

8 G. Borges

2/2		0/1
0/2		

9 T. Canete

		1/1

1 post

10 T. Santos

0/1		1/1
0/1		0/1
2/2		

11 C. Andrade

	1/1	

21 A. Conceição

23 R. Quost

0/2		
1/1		

25 V. Teixeira

	1/1	

28 G. Oliveira

	0/1	
		1/1

33 G. Gama

3/3	1/1	

1 post 2 block

35 M. Perrela

2/2		
		0/1
	1/1	1/1

2 miss.

TOTAL

8/11	2/3	3/4
1/5	0/1	1/4
3/3	3/4	3/3

2 post 4 miss. 2 block 1/1 lob

Saves distribution goalkeepers

1 M. Santos

0/2		0/1
0/4		
	0/1	0/1

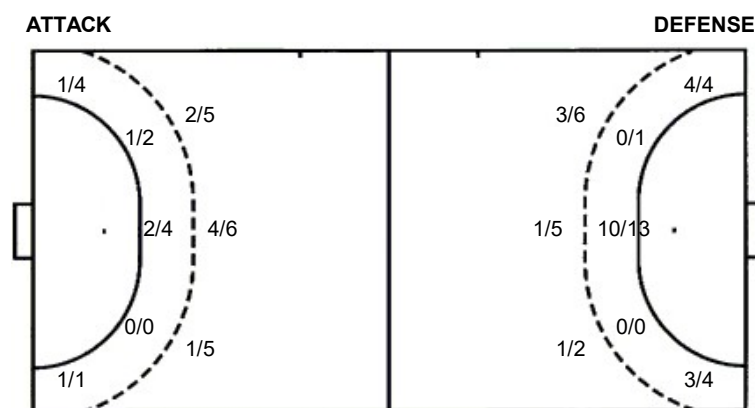
81 L. Nascimento

3/11	1/1	0/3
0/2	1/1	1/3
0/4	1/2	1/4

TOTAL

3/13	1/1	0/4
0/6	1/1	1/3
0/4	1/3	1/5

Shots by position



7m penalties 4/7
Fastbreak 4/7
Breakthrough 5/6
Long dist. 0/0

7m penalties 1/2
Fastbreak 4/5
Breakthrough 6/6
Long dist. 0/0

Shooting statistics

Position	Goals	Sav.	Miss.	Post	Blk.	Total	%
Back (9m)	7	4	1	2	2	16	44
Line (6m)	3	3	0	0	0	6	50
Wing	2	2	1	0	0	5	40
7m penalties	4	2	1	0	0	7	57
Fastbreak	4	3	0	0	0	7	57
Breakthrough	5	0	1	0	0	6	83
Total	25	14	4	2	2	47	53

Jersey number Tot. Total shooting 6m 6m (line) shooting 9m 9m shooting Wng. Wing shooting FB Fastbreak sh. 7m 7m penalty sh.
Brk. Breakthrough sh. LD Long distance sh. As. Assists E7 Earned 7m pen. TF Technical Faults St. Steals 2m 2m punishments
C7. Committed 7m E2 Earned 2m pun. YC. Yellow cards RC Red cards BC Blue cards Blk. Blocks S Starting Line-up



Super Globe

Qatar (Doha)

Quarterfinal



Match Team Statistics
Match No. 3

Taubate 25 - 33 Fuchse Berlin
(11 - 19) (14 - 14)

16.10.2018. 17:00
Attendance: 300
Duhail Sports Hall

Referees: Martin Gjeding (DEN) / Mads Hansen (DEN)

Fuchse Berlin

#	Surname and name	S	Goals / shots								Attack				Def.			Penalties				TP							
			Tot.	%	9m	6m	Wing	7m	FB	Brk.	LD	As.	E7	E2	TF	St.	C7	Blk	YC	2m	RC		BC						
3	WIEDE Fabian		4/4	100	1/1					1/1	2/2		5		1	2			2										32:08
4	ELISSON Bjarki	S	3/3	100				3/3						1		1												37:22	
6	HOLM Jacob	S	1/3	33	0/2								3			3									1			37:36	
7	STRUCK Kevin		1/2	50				1/1		0/1			1						2									30:43	
10	GOJUN Jakov	S	1/2	50		1/2										1	1		1									23:08	
12	HEINEVETTER Silvio	S														1												28:19	
16	SEMISCH Malte																											17:06	
18	LINDBERG Hans		1/2	50				1/2					1					1										28:04	
21	ZAKRISSON Mattias	S	3/4	75		0/1	2/2			1/1					1	1	2											26:11	
24	SIMAK Frederik		4/4	100	1/1				1/1	1/1	1/1		1		1	2												36:56	
28	SCHMIDT Erik	S	4/4	100		4/4									1	1	1	1	1		2							40:34	
42	JALLOUZ Wael		1/7	14	1/6				0/1				1	1		2												21:03	
43	REISSKY Christoph		5/6	83	2/3	1/1					2/2		3			5	1											33:02	
93	MARSENIC Mijajlo	S	5/7	71		4/6				1/1										2					1			27:48	
	Team / bench																												
	UKUPNO		33/48	69	5/13	10/14	7/8	1/2	4/5	6/6	0/0		15	2	3	18	5	6	3	1	4	0	0						

#	Surname and name	Saves / shots								
		Tot.	%	9m	6m	Wing	7m	FB	Brk.	LD
12	HEINEVETTER Silvio	8/19	42	2/4	2/5	1/2	2/3	1/3	0/2	
16	SEMISCH Malte	6/20	30	2/7	1/1	1/2	0/3	2/4	0/3	
	TOTAL	14/39	36	4/11	3/6	2/4	2/6	3/7	0/5	0/0

Coach: Velimir Petkovic

Number of attacks: 54, Efficiency: 61%, Average Duration: 28,1 seconds

Attack by type of defense

	Shots	9m	6m	Wing	TF	E7	E2
On def. 6-0	14/20	4/7	3/6	4/4	10	2	2
On def. 5-1	8/12	1/4	4/4	1/2	5	0	0
On def. 4-2	5/7	0/1	2/3	2/2	3	0	1
On def. 3-2-1	0/1	0/1	0/0	0/0	0	0	0
Fastbreak	4/5				0	0	0

Defense by type

	Total	9m	6m	Wing	Stl.	C7	2m
Def. 6-0	13/25	5/12	3/4	2/5	3	4	3
Def. 5-1	4/6	2/2	0/2	0/0	1	2	1
Def. 4-2	0/1	0/1	0/0	0/0	1	0	0
Def. 3-2-1	0/0	0/0	0/0	0/0	0	0	0
Fastbreak	4/7				0	0	0

Attack with goalkeeper out

	Attack				Reaction		
	Att.	Eff.	Shots	TF	FB	LD	Tot.
GK out pl. minority	1	0%	0/1	0	0/0	0/0	0/0
GK in	53	60%	32/46	17	4/7	0/0	4/7

GK out attack is counted if one part or whole attack was GK out

Defense with opponent goalkeeper out

	Attack				Reaction		
	Att.	Eff.	Shots	TF	FB	LD	Tot.
GK out pl. super.	1	0%	0/1	1	0/0	0/0	0/0
GK in	53	47%	25/45	14	3/4	0/0	3/4

Attack with player superiority/minority

	Attack				Reaction		
	Att.	Eff.	Shots	TF	FB	LD	Tot.
Superiority +1	9	67%	6/8	3	0/1	0/0	0/1
Normal	35	54%	19/31	14	4/6	0/0	4/6
Minority -1	8	63%	5/6	1	0/0	0/0	0/0
Minority -2	1	100%	1/1	0	0/0	0/0	0/0

Player superiority counted at the end of attack (in case it changes during attack)

Defense with player superiority/minority

	Attack				Reaction		
	Att.	Eff.	Shots	TF	FB	LD	Tot.
Minority -2	1	100%	1/1	0	0/0	0/0	0/0
Minority -1	7	57%	4/5	3	2/2	0/0	2/2
Normal	38	45%	17/33	9	1/2	0/0	1/2
Superiority +1	7	29%	2/6	2	0/0	0/0	0/0

Jersey number Tot. Total shooting 6m 6m (line) shooting 9m 9m shooting Wng Wing shooting FB Fastbreak sh. 7m 7m penalty sh.
Brk. Breakthrough sh. LD Long distance sh. As. Assists E7 Earned 7m pen. TF Technical Faults St. Steals 2m 2m punishments
C7. Committed 7m E2 Earned 2m pun. YC. Yellow cards RC Red cards BC Blue cards Blk. Blocks S Starting Line-up



Super Globe

Qatar (Doha)

Quarterfinal



Match Team Statistics
Match No. 3

Taubate 25 - 33 Fuchse Berlin
(11 - 19) (14 - 14)

16.10.2018. 17:00
Attendance: 300
Duhail Sports Hall

Referees: Martin Gjeding (DEN) / Mads Hansen (DEN)

Shot distribution by player

3 F. Wiede

2/2		
1/1		

1/1 lob

4 B. Elisson

2/2		
1/1		

6 J. Holm

1/1		

1 post 1 block

7 K. Struck

1/1		

1 miss.

10 J. Gojun

0/1		
	1/1	

16 M. Semisch

18 H. Lindberg

0/1		
1/1		

21 M. Zakrisson

1/1		1/1
1/1		

1 miss.

24 F. Simak

2/2		1/1
		1/1

28 E. Schmidt

1/1		
		1/1
		2/2

42 W. Jallouz

0/1		
	0/1	0/1
1/1	0/1	

2 miss.

43 C. Reissky

2/2		1/1
1/1	1/1	

1 miss.

93 M. Marsenic

2/2	0/1	2/2
		1/2

TOTAL

10/13	0/1	4/4
6/6	0/1	2/3
4/4	2/3	4/5

1 post 5 miss. 1 block 1/1 lob

Saves distribution goalkeepers

12 S. Heinevetter

1/4	1/3	1/3
2/2		3/3
0/2	0/1	0/1

16 M. Semisch

2/7		0/1
2/3	1/1	0/1
0/1	1/3	0/2

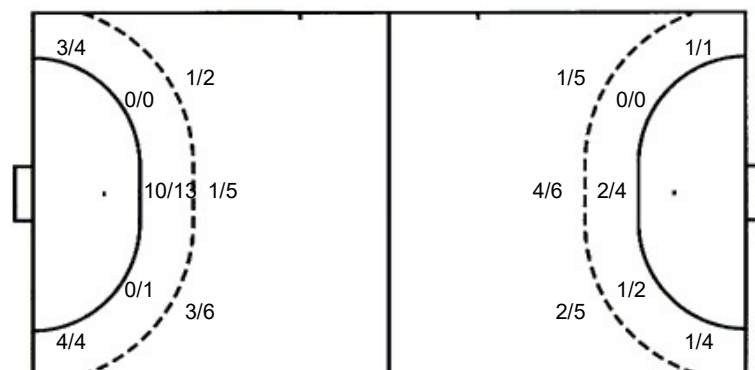
TOTAL

3/11	1/3	1/4
4/5	1/1	3/4
0/3	1/4	0/3

Shots by position

ATTACK

DEFENSE



7m penalties 1/2
Fastbreak 4/5
Breakthrough 6/6
Long dist. 0/0

7m penalties 4/7
Fastbreak 4/7
Breakthrough 5/6
Long dist. 0/0

Shooting statistics

Position	Goals	Sav.	Miss.	Post	Blk.	Total	%
Back (9m)	5	3	3	1	1	13	38
Line (6m)	10	3	1	0	0	14	71
Wing	7	1	0	0	0	8	88
7m penalties	1	1	0	0	0	2	50
Fastbreak	4	0	1	0	0	5	80
Breakthrough	6	0	0	0	0	6	100
Total	33	8	5	1	1	48	69

Jersey number Tot. Total shooting 6m 6m (line) shooting 9m 9m shooting Wng. Wing shooting FB Fastbreak sh. 7m 7m penalty sh.
Brk. Breakthrough sh. LD Long distance sh. As. Assists E7 Earned 7m pen. TF Technical Faults St. Steals 2m 2m punishments
C7. Committed 7m E2 Earned 2m pun. YC. Yellow cards RC Red cards BC Blue cards Blk. Blocks S Starting Line-up