



Super Globe

Qatar (Doha)

Placement Match 3-4



Match Team Statistics
Match No. 11

Al Sadd 23 - 33 Montpellier

(9 - 14) (14 - 19)

19.10.2018. 17:00
Attendance: 400
Duhail Sports Hall

Referees: Oscar Raluy (ESP) / Angel Sabroso (ESP)

Al Sadd

#	Surname and name	S	Goals / shots								Attack				Def.			Penalties			TP			
			Tot.	%	9m	6m	Wing	7m	FB	Brk.	LD	As.	E7	E2	TF	St.	C7	Blk	YC	2m		RC	BC	
1	ALIHODZIC Irhad																						6:11	
5	SATTAM S K AL- KUWARI Abdulla													1									4:20	
6	MAHMOOD A M ABDELMAGED Mohammed		2/3	67			2/3									1		1					37:58	
10	ABDULHADI S M AL- KARBI Abdulla	S	0/1	0			0/1									1		1				1	26:00	
12	OLUKUNLE YUSSUF Rasheed	S																					47:11	
15	HAJ YOUSSEF Khaled	S	7/9	78	5/7				1/1					1	1	7		1	1	2			57:07	
17	NOWRADDINE DENGUIR Amir	S	8/15	53	4/10					1/1	3/4			1		1	2		1				60:00	
18	ASHRAF A G AHMED Nour	S	3/5	60		3/4					0/1					1							40:34	
19	EDHAM S S AL- KUWARI Faisal																						9:58	
43	MOHAMED A BAKHDER Khalid		1/2	50							1/2					3							23:40	
44	MITROVIC Nikola	S	0/3	0	0/3											3							29:06	
93	ALNOORI A AYED Hamdi	S	2/2	100			1/1				1/1												44:18	
94	ABDULMUHSEN SALEH AL-QAHTANI Fahd																						3:13	
97	BINHASSAN ISSAOUI Ouday		0/2	0		0/2															1	1	30:24	
Team / bench																								
UKUPNO			23/42	55	9/20	3/6	3/5	1/1	1/2	6/8	0/0			3	1	1	18	0	3	1	2	4	0	0

#	Surname and name	Saves / shots								
		Tot.	%	9m	6m	Wing	7m	FB	Brk.	LD
1	ALIHODZIC Irhad	0/3	0	0/1	0/1		0/1			
12	OLUKUNLE YUSSUF Rasheed	9/36	25	1/7	2/5	4/9	1/2	1/8	0/5	
TOTAL		9/39	23	1/8	2/6	4/9	1/3	1/8	0/5	0/0

Coach: **Nenad Maksic**

Number of attacks: 48, Efficiency: 48%, Average Duration: 42,2 seconds

Attack by type of defense

	Shots	9m	6m	Wing	TF	E7	E2
On def. 6-0	18/33	6/15	3/6	3/4	18	1	1
On def. 5-1	1/1	1/1	0/0	0/0	0	0	0
On def. 4-2	2/4	2/4	0/0	0/0	0	0	0
Fastbreak	1/2				0	0	0

Defense by type

	Total	9m	6m	Wing	Stl.	C7	2m
Def. 6-0	18/28	6/8	3/5	5/11	0	3	3
Def. 5-1	2/4	1/2	1/1	0/0	0	0	0
Def. 4-2	0/0	0/0	0/0	0/0	0	0	1
Fastbreak	7/8				0	0	0

Attack with goalkeeper out

	Attack				Reaction		
	Att.	Eff.	Shots	TF	FB	LD	Tot.
GK out (7 on 6)	1	100%	1/1	0	0/0	1/1	1/1
GK out pl. minority	4	50%	2/4	1	0/0	0/0	0/0
GK in	43	47%	20/36	17	7/8	2/4	9/12

GK out attack is counted if one part or whole attack was GK out

Defense with opponent goalkeeper out

	Attack				Reaction		
	Att.	Eff.	Shots	TF	FB	LD	Tot.
GK out (7 on 6)	0	0%	0/0	0	0/0	0/0	0/0
GK out pl. super.	0	0%	0/0	0	0/0	0/0	0/0
GK in	47	68%	32/48	6	1/2	0/0	1/2

Attack with player superiority/minority

	Attack				Reaction		
	Att.	Eff.	Shots	TF	FB	LD	Tot.
Superiority +1	1	100%	1/2	0	0/0	0/0	0/0
Normal	38	47%	18/31	15	7/8	1/1	8/9
Minority -1	9	44%	4/8	3	0/0	2/4	2/4

Player superiority counted at the end of attack (in case it changes during attack)

Defense with player superiority/minority

	Attack				Reaction		
	Att.	Eff.	Shots	TF	FB	LD	Tot.
Minority -1	9	56%	5/10	0	0/0	0/0	0/0
Normal	37	70%	26/35	6	1/2	0/0	1/2
Superiority +1	1	100%	1/3	0	0/0	0/0	0/0

Jersey number Tot. Total shooting 6m 6m (line) shooting 9m 9m shooting Wng. Wing shooting FB Fastbreak sh. 7m 7m penalty sh.
 Brk. Breakthrough sh. LD Long distance sh. As. Assists E7 Earned 7m pen. TF Technical Faults St. Steals 2m 2m punishments
 C7. Committed 7m E2 Earned 2m pun. YC. Yellow cards RC Red cards BC Blue cards Blk. Blocks S Starting Line-up



Super Globe

Qatar (Doha)

Placement Match 3-4



Match Team Statistics
Match No. 11

Al Sadd 23 - 33 Montpellier
(9 - 14) (14 - 19)

19.10.2018. 17:00
Attendance: 400
Duhail Sports Hall

Referees: Oscar Raluy (ESP) / Angel Sabroso (ESP)

Shot distribution by player

11. Alihodzic

5 A. Sattam S K Al-Kuwari

6 M. Mahmood A M Abdelmaged

1/1		0/1
1/1		

10 A. Abdulhadi S M Al-Karbi

1 post

12 R. Olukunle Yussuf

15 K. Haj Youssef

	1/1	1/1
2/2		1/1
1/1	1/1	

1 miss. 1 block

17 A. Nowraddine Denguir

2/3	0/2	1/3
2/2	1/1	2/2

1 post 1 block

18 N. Ashraf A G Ahmed

		1/1
		1/1
1/1		0/1

1 miss.

19 F. Edham S S Al-Kuwari

43 K. Mohamed A Bakhder

		1/1
	0/1	

44 N. Mitrovic

		0/1
0/1		

1 post

93 H. Alnoori A Ayed

	1/1	
		1/1

94 F. Abdulmuhsen Saleh Al-Qantani

97 O. Binhassan Issaoui

	0/1	

1 miss.

TOTAL

1/1	2/2	2/4
4/5	0/2	4/6
5/6	2/4	3/4

3 post 3 miss. 2 block

Saves distribution goalkeepers

11. Alihodzic

0/1		
0/1		0/1

12 R. Olukunle Yussuf

0/6	1/4	2/7
2/2	0/3	0/5
0/2	3/6	1/4

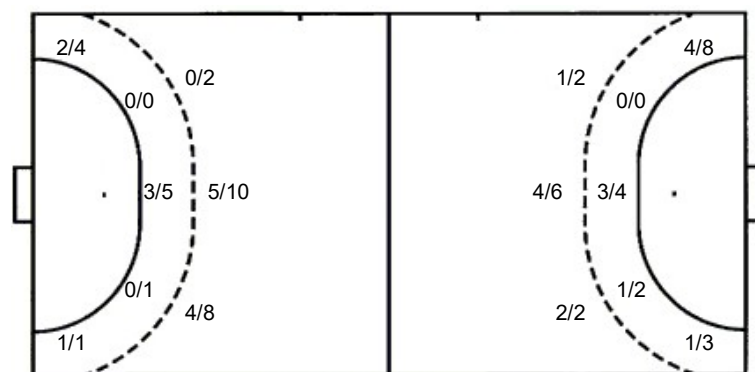
TOTAL

0/7	1/4	2/7
2/3	0/3	0/6
0/2	3/6	1/4

Shots by position

ATTACK

DEFENSE



Shooting statistics

Position	Goals	Sav.	Miss.	Post	Blk.	Total	%
Back (9m)	9	6	1	2	2	20	45
Line (6m)	3	1	2	0	0	6	50
Wing	3	1	0	1	0	5	60
7m penalties	1	0	0	0	0	1	100
Fastbreak	1	1	0	0	0	2	50
Breakthrough	6	2	0	0	0	8	75
Total	23	11	3	3	2	42	55

7m penalties 1/1
Fastbreak 1/2
Breakthrough 6/8
Long dist. 0/0

7m penalties 2/3
Fastbreak 7/8
Breakthrough 5/6
Long dist. 3/5

Jersey number Tot. Total shooting 6m 6m (line) shooting 9m 9m shooting Wng. Wing shooting FB Fastbreak sh. 7m 7m penalty sh.
Brk. Breakthrough sh. LD Long distance sh. As. Assists E7 Earned 7m pen. TF Technical Faults St. Steals 2m 2m punishments
C7. Committed 7m E2 Earned 2m pun. YC. Yellow cards RC Red cards BC Blue cards Blk. Blocks S Starting Line-up



Super Globe Qatar (Doha) Placement Match 3-4



Match Team Statistics
Match No. 11

Al Sadd 23 - 33 Montpellier

(9 - 14) (14 - 19)

19.10.2018. 17:00
Attendance: 400
Duhail Sports Hall

Referees: Oscar Raluy (ESP) / Angel Sabroso (ESP)

Montpellier

#	Surname and name	S	Goals / shots									Attack				Def.			Penalties				TP		
			Tot.	%	9m	6m	Wing	7m	FB	Brk.	LD	As.	E7	E2	TF	St.	C7	Blk	YC	2m	RC	BC			
4	SIMONET Diego		5/6	83	0/1		1/1			1/1	2/2	2													42:23
5	VILLEMENOT Kyllian	S	0/3	0	0/1					0/1	0/1	1			1										20:45
6	CAUSSE Théophile		3/4	75			1/2		2/2						1										30:09
10	GREBILLE Mathieu	S	1/4	25			0/3		1/1							1									17:03
16	PORTNER Nikola	S																							47:09
18	PETTERSON Fredric	S	4/6	67		3/5			1/1			2	2	1	4					1					42:47
22	RICHARDSON Melvyn	S																							0:48
23	KAVTICNIK Vid		2/5	40			1/2	1/2	0/1							1				1					29:12
24	BONNEFOND Baptiste		1/1	100	1/1							1				1	1								8:23
25	FAUSTIN Jean Loup		3/3	100				1/1	1/1	1/1															22:50
28	PORTE Valentin	S	11/11	100	6/6				1/1	3/3	1/1	1			1	1									41:11
29	BINGO Arnaud		2/3	67			2/3					1	1		1										42:57
33	AFGOUR Benjamin		1/1	100		1/1									1										
39	SOUSSI Mohamed	S	0/1	0	0/1							5				1		1		1					47:57
89	SHEBIB Mohamed Mamdouh													2						1					15:30
98	PIERRE Rubens		0/1	0																					10:56
	Team / bench																								
	UKUPNO		33/49	67	7/10	4/6	5/11	2/3	7/8	5/6	3/5	11	3	4	6	11	1	2	2	1	0	0			

Goalkeepers		Saves / shots								
#	Surname and name	Tot.	%	9m	6m	Wing	7m	FB	Brk.	LD
16	PORTNER Nikola	8/26	31	4/10	1/4	0/3		1/1	2/8	
98	PIERRE Rubens	3/8	38	2/5		1/1	0/1	0/1		
	TOTAL	11/34	32	6/15	1/4	1/4	0/1	2/2	2/8	0/0

Coach: **Patrice Canayer**

Number of attacks: 47, Efficiency: 70%, Average Duration: 31,3 seconds

Attack by type of defense

	Shots	9m	6m	Wing	TF	E7	E2
On def. 6-0	18/28	6/8	3/5	5/11	6	3	3
On def. 5-1	2/4	1/2	1/1	0/0	0	0	0
On def. 4-2	0/0	0/0	0/0	0/0	0	0	1
Fastbreak	7/8				0	0	0

Defense by type

	Total	9m	6m	Wing	Stl.	C7	2m
Def. 6-0	18/33	6/15	3/6	3/4	10	1	1
Def. 5-1	1/1	1/1	0/0	0/0	1	0	0
Def. 4-2	2/4	2/4	0/0	0/0	0	0	0
Fastbreak	1/2				0	0	0

Attack with goalkeeper out

	Attack				Reaction		
	Att.	Eff.	Shots	TF	FB	LD	Tot.
GK in	47	68%	32/48	6	1/2	0/0	1/2

GK out attack is counted if one part or whole attack was GK out

Defense with opponent goalkeeper out

	Attack				Reaction		
	Att.	Eff.	Shots	TF	FB	LD	Tot.
GK in	43	47%	20/36	17	7/8	2/4	9/12

Attack with player superiority/minority

	Attack				Reaction		
	Att.	Eff.	Shots	TF	FB	LD	Tot.
Superiority +1	9	56%	5/10	0	0/0	0/0	0/0
Normal	37	70%	26/35	6	1/2	0/0	1/2
Minority -1	1	100%	1/3	0	0/0	0/0	0/0

Player superiority counted at the end of attack (in case it changes during attack)

Defense with player superiority/minority

	Attack				Reaction		
	Att.	Eff.	Shots	TF	FB	LD	Tot.
Minority -1	1	100%	1/2	0	0/0	0/0	0/0
Normal	38	47%	18/31	15	7/8	1/1	8/9
Superiority +1	9	44%	4/8	3	0/0	2/4	2/4

Jersey number Tot. Total shooting 6m 6m (line) shooting 9m 9m shooting Wng. Wing shooting FB Fastbreak sh. 7m 7m penalty sh.
Brk. Breakthrough sh. LD Long distance sh. As. Assists E7 Earned 7m pen. TF Technical Faults St. Steals 2m 2m punishments
C7. Committed 7m E2 Earned 2m pun. YC. Yellow cards RC Red cards BC Blue cards Blk. Blocks S Starting Line-up



Super Globe

Qatar (Doha)

Placement Match 3-4



Match Team Statistics
Match No. 11

Al Sadd 23 - 33 Montpellier

(9 - 14) (14 - 19)

19.10.2018. 17:00
Attendance: 400
Duhail Sports Hall

Referees: Oscar Raluy (ESP) / Angel Sabroso (ESP)

Shot distribution by player

4 D. Simonet

1/1		1/1
	2/2	1/1
		0/1

5 K. Villeminot

1 post 1 miss. 1 block

6 T. Causse

1/1		0/1
		1/1
1/1		

10 M. Grebille

1/1		0/1
	0/1	

1 miss.

16 N. Portner

18 F. Petterson

1/1	2/2	1/1
0/1		
	0/1	

22 M. Richardson

23 V. Kavcicnik

1/1		
0/1		
1/1	0/1	

1 miss.

24 B. Bonnefond

		1/1

25 J. Faustin

1/1		
	1/1	1/1

28 V. Porte

1/1	1/1	2/2
	1/1	3/3
	2/2	1/1

29 A. Bingo

	0/1	1/1
		1/1

33 B. Afgour

1/1		

39 M. Soussi

1 post

89 M. Shebib

98 R. Pierre

1 miss.

TOTAL

7/7	3/4	5/7
1/3	3/3	6/6
2/2	3/6	3/4

2 post 4 miss. 1 block

Saves distribution goalkeepers

16 N. Portner

0/1	0/1	1/3
1/5	1/1	1/4
1/4	2/4	1/3

98 R. Pierre

	0/1	1/1
	1/1	1/2
0/2		0/1

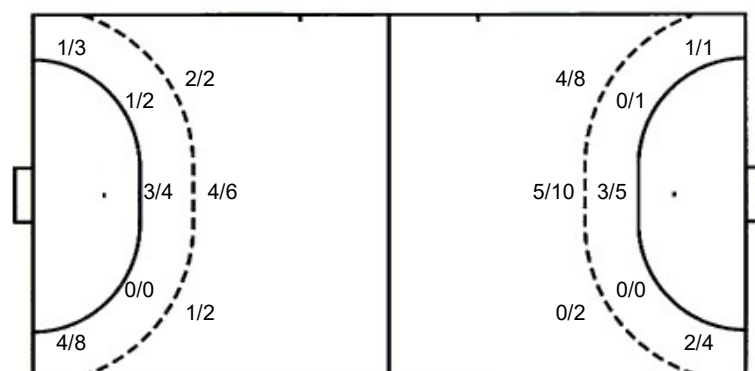
TOTAL

0/1	0/2	2/4
1/5	2/2	2/6
1/6	2/4	1/4

Shots by position

ATTACK

DEFENSE



7m penalties 2/3
Fastbreak 7/8
Breakthrough 5/6
Long dist. 3/5

7m penalties 1/1
Fastbreak 1/2
Breakthrough 6/8
Long dist. 0/0

Shooting statistics

Position	Goals	Sav.	Miss.	Post	Blk.	Total	%
Back (9m)	7	1	0	1	1	10	70
Line (6m)	4	2	0	0	0	6	67
Wing	5	4	2	0	0	11	45
7m penalties	2	1	0	0	0	3	67
Fastbreak	7	1	0	0	0	8	88
Breakthrough	5	0	1	0	0	6	83
Total	30	9	3	1	1	44	68

Jersey number Tot. Total shooting 6m 6m (line) shooting 9m 9m shooting Wng. Wing shooting FB Fastbreak sh. 7m 7m penalty sh.
Brk. Breakthrough sh. LD Long distance sh. As. Assists E7 Earned 7m pen. TF Technical Faults St. Steals 2m 2m punishments
C7. Committed 7m E2 Earned 2m pun. YC. Yellow cards RC Red cards BC Blue cards Blk. Blocks S Starting Line-up