



# XXII Women's World Championships 2015

## Denmark



### President's Cup Place 21-24

## Match Team Statistics

SUN 13 DEC 2015  
18:00

Match No: 66

**COD 30 - 31 KAZ**  
(12 - 11) (14 - 15) (0 - 0) (0 - 0) 4 - 5

Herning

Referees: SCHULZE Robert / TÖNNIES Tobias (GER)

## COD - Congo Democratic

Players		Shots								Offence		Defence		Penalties			TP	
No.	Name	G/S	%	6m	Wing	9m	7m	FB	BT	AS	TF	ST	BS	YC	2Min	RC		DR
1	MAKUBANZA Louise										1							15:43
2	OKOKO Jumelle	0/2	0			0/1	0/1			1	2				1			26:32
3	SHOKKOS SONGA Grace																	
4	FEZA MWANGE Consolate	0/1	0					0/1		2	3	1			1			28:36
5	MILEMBA KALENDE Olga	1/3	33	0/1			1/2				1							8:30
6	MATUTU LUWEMBA Clemance	4/4	100				1/1	2/2	1/1	1	1	1						44:34
7	LUSAMBA PUNA Apopie	5/8	63	3/6				1/1	1/1					1	2			48:31
8	LOUOBA Constance	1/3	33			0/2	1/1				1							10:38
9	MWASESA MWANGE Christianne	11/17	65		0/1	1/3	3/6	4/4	3/3	3	2	4						59:49
11	LUHAKA Aurelie	2/2	100			1/1	1/1				1		4	1				30:30
13	MUSONDA KASANGALA Lydia	5/6	83			2/3	3/3			2	6	2	2					30:00
16	KABAMBA TSHELA Bibiche																	22:32
17	MAYOULOU Patricia	0/1	0				0/1			1								15:26
22	LOUOBA Diane																	21:45
25	BABINA NGOMBO Carine										2							5:50
91	THIERO Simone	1/2	50		0/1			1/1		1		1			1			51:04
	Bench/Team										1							
	<b>Totals</b>	30/49	61	3/7	0/2	4/10	10/16	8/9	5/5	11	21	9	6	2	5			

Goalkeepers		Total Shots		6m Shots		Wing Shots		9m Shots		7m Shots		Fast Breaks		Breakthroughs	
No.	Name	S/S	%	S/S	%	S/S	%	S/S	%	S/S	%	S/S	%	S/S	%
1	MAKUBANZA Louise	3/14	21			0/1	0	2/4	50	0/4	0	0/2	0	1/3	33
16	KABAMBA TSHELA Bibiche	1/9	11	0/1	0			1/5	20	0/1	0	0/1	0	0/1	0
22	LOUOBA Diane	2/11	18	0/1	0	1/3	33	1/5	20			0/2	0		
	<b>Totals</b>	8/39	21	0/2	0	1/4	25	4/14	29	2/10	20	0/5	0	1/4	25

Team Shots	Goals	Saves	Missed	Post	Blocked	Total	%
6m Shots	3	4				7	43
Wing Shots		2				2	0
9m Shots	4	1	1	3	1	10	40
7m Shots	10	5	1		N/A	16	63
Fast Breaks	8	1				9	89
Breakthroughs	5					5	100
<b>Totals</b>	30	13	2	3	1	49	61

Number of Attacks: 68, Scoring Efficiency: 44%



# XXII Women's World Championships 2015 Denmark



## President's Cup Place 21-24

### Match Team Statistics

SUN 13 DEC 2015  
18:00

Match No: 66

**COD 30 - 31 KAZ**  
(12 - 11) (14 - 15) (0 - 0) (0 - 0) 4 - 5

Herning

Referees: SCHULZE Robert / TÖNNIES Tobias (GER)

### COD - Congo Democratic

### Shots Distribution

#### Players

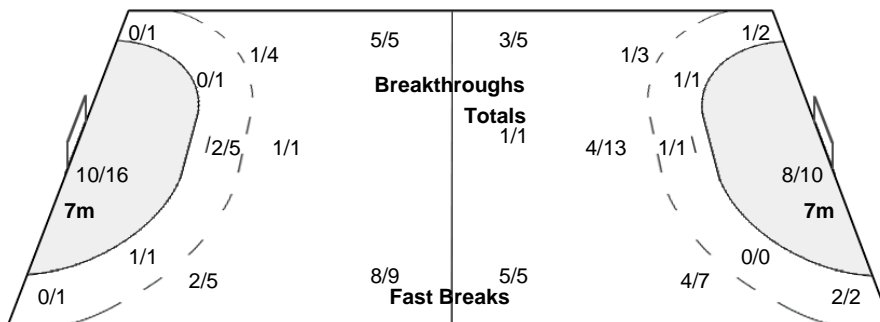
Goals / Shots

1 MAKUBANZA L	2 OKOKO J	3 SHOKKOS SONGA G	4 FEZA MWANGE C	5 MILEMBA KALENDE O	6 MATUTU LUWEMBA C	7 LUSAMBA PUNA A
	0/1		0/1	1/1	2/2	2/2
	1-Post			1-Missed		1/2
						1/2
						0/1
						1/1
8 LOUOBA C	9 MWASESA MWANGE C	11 LUHAKA A	13 MUSONDA KASANGALA	16 KABAMBA TSHELA B	17 MAYOULOU P	22 LOUOBA D
1/2	1/2	4/4	1/1			
	0/2		2/2		0/1	
1-Post	2/3	2/2	1-Blocked	1-Post		
	2/2	2/2				
		2/2				
			1/1			
			2/2			
			1/1			
25 BABINA NGOMBO C	91 THIERS S					
	0/1					
	1/1					

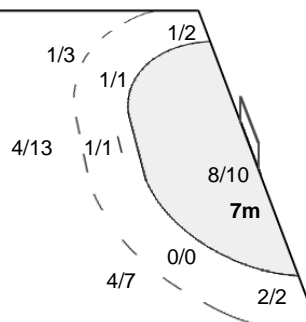
#### Team Goals / Shots

3/3	2/4	6/6
5/8	0/1	2/5
6/9	2/3	4/4
2-Missed	3-Post	1-Blocked

#### Offence



#### Defence



#### Goalkeepers Saves / Shots

1/9		0/6
1/1	3/3	1/3
2/11	0/1	0/5

#### 1 MAKUBANZA L

0/1		
	1/1	1/2
1/7	0/1	0/2

#### 16 KABAMBA TSHELA B

0/5		0/2
	1/1	
0/1		

#### 22 LOUOBA D

0/2		0/4
1/1	1/1	0/1
0/1		0/1



# XXII Women's World Championships 2015

## Denmark



### President's Cup Place 21-24

## Match Team Statistics

SUN 13 DEC 2015  
18:00

Match No: 66

**COD 30 - 31 KAZ**

(12 - 11) (14 - 15) (0 - 0) (0 - 0) 4 - 5

Herning

Referees: SCHULZE Robert / TÖNNIES Tobias (GER)

## KAZ - Kazakhstan

Players		Shots								Offence		Defence		Penalties			TP	
No.	Name	G/S	%	6m	Wing	9m	7m	FB	BT	AS	TF	ST	BS	YC	2Min	RC		DR
1	TSUPENKOVA Yevgeniya									1	1							60:00
3	TANKINA Olga	8/15	53			4/9	2/3	1/1	1/2		4	1		1	1			60:00
5	PIKALOVA Marina	4/5	80		2/2		1/2	1/1			1							60:00
6	KARAVAYEVA Valeriya	3/3	100	1/1	1/1			1/1		4	2	4				1		57:33
7	AKHMET Elvira																	
8	UKBENOVA Yelshat																	
9	KHARDINA Veronika	7/15	47		0/1	4/11	1/1	1/1	1/1	2	6			1	1			52:12
10	RODINA Anastassiya	3/4	75				1/1	1/1	1/2	2	4	1			2			60:00
11	KOLOTINSKAYA Viktoriya	1/2	50			0/1	1/1				4				1			17:00
14	ABDIKHAMIT Arailym	2/2	100	1/1		1/1						1	1		2			43:11
15	ALEXandrova Irina	1/1	100				1/1											
16	DANILOVA Irina																	
19	KAPRALOVA Kristina	1/2	50			1/2					2			1				10:04
96	ABILDA Dana	1/1	100				1/1											
Bench/Team														1				
<b>Totals</b>		31/50	62	2/2	3/4	10/24	8/10	5/5	3/5	9	24	7	1	4	8			

Goalkeepers		Total Shots		6m Shots		Wing Shots		9m Shots		7m Shots		Fast Breaks		Breakthroughs	
No.	Name	S/S	%	S/S	%	S/S	%	S/S	%	S/S	%	S/S	%	S/S	%
1	TSUPENKOVA Yevgeniya	11/38	29	4/7	57	2/2	100	1/5	20	3/10	30	1/9	11	0/5	0
16	DANILOVA Irina														
<b>Totals</b>		13/43	30	4/7	57	2/2	100	1/5	20	5/15	33	1/9	11	0/5	0

Team Shots	Goals	Saves	Missed	Post	Blocked	Total	%
6m Shots	2					2	100
Wing Shots	3	1				4	75
9m Shots	10	4	4		6	24	42
7m Shots	8	2			N/A	10	80
Fast Breaks	5					5	100
Breakthroughs	3	1		1		5	60
<b>Totals</b>	31	8	4	1	6	50	62

Number of Attacks: 69, Scoring Efficiency: 45%



# XXII Women's World Championships 2015 Denmark



## President's Cup Place 21-24

### Match Team Statistics

SUN 13 DEC 2015  
18:00

Match No: 66

**COD 30 - 31 KAZ**  
(12 - 11) (14 - 15) (0 - 0) (0 - 0) 4 - 5

Herning

Referees: SCHULZE Robert / TÖNNIES Tobias (GER)

### KAZ - Kazakhstan

### Shots Distribution

#### Players

Goals / Shots

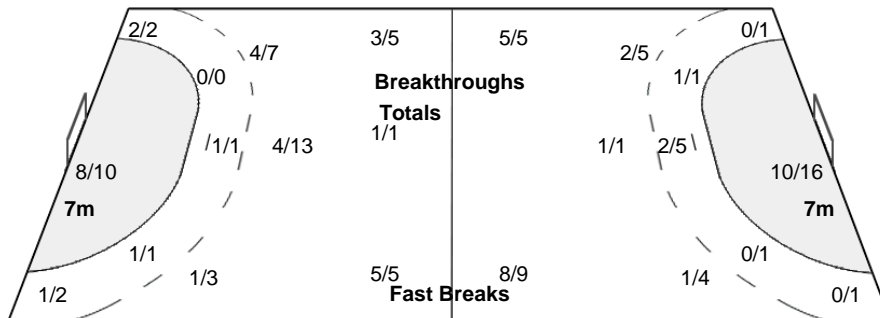
1 TSUPENKOVA Y	3 TANKINA O	5 PIKALOVA M	6 KARAVAYEVA V	7 AKHMET E	8 UKBENOVA Y	9 KHANDINA V
	5/5 0/1 3/4	2/3	3/3			2/2 0/1 1/2 2/3 1/1 1/1
	1-Missed 1-Post	3-Blocked				3-Missed 2-Blocked
10 RODINA A	11 KOLOTINSKAYA V	14 ABDIKHAMIT A	15 ALEXandroVA I	16 DANILOVA I	19 KAPRALOVA K	96 ABILDA D
2/2 0/1 1/1	1/1	1/1	1/1	1/1	1/1 0/1	1/1
	1-Blocked					

#### Team Goals / Shots

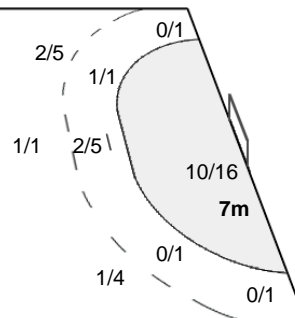
8/9	6/6
0/1	0/3
9/11	1/1
5/5	

4-Missed 1-Post 6-Blocked

#### Offence



#### Defence



#### Goalkeepers Saves / Shots

0/3	2/4	0/6
3/8	1/1	3/5
3/9	1/3	0/4

#### 1 TSUPENKOVA Y

0/3	2/4	0/5
3/7	1/1	2/3
2/8	1/3	0/4

#### 16 DANILOVA I


<b>Legend:</b>	% Efficiency	<b>2Min</b> 2 Minute Suspensions	<b>6m</b> 6 metre Shots	<b>7m</b> 7 metre Shots	<b>9m</b> 9 metre Shots
<b>AS</b> Assists	<b>BS</b> Blocked Shots	<b>BT</b> Breakthroughs	<b>DR</b> Disqualification with Report	<b>FB</b> Fast Breaks	<b>S/S</b> Saves/Shots
<b>G/S</b> Goals/Shots	<b>N/A</b> Not Applicable	<b>No.</b> Uniform Number	<b>RC</b> Red Cards	<b>YC</b> Yellow Cards	
<b>ST</b> Steals	<b>TO</b> Turnover	<b>TP</b> Time Played	<b>Wing</b> Wing Shots		